

Converting Colors

CIELCh(73, 43.359, 31.346)

Have a look what the booklet for
CIELCh(73, 43.359, 31.346) contains.

CIELCh(73, 43.639, 30.993)	3
<i>Conversions</i>	4
<i>Details</i>	6
<i>Harmonies</i>	11
<i>Previews</i>	20
<i>Color Blindness Simulation</i>	23
<i>CSS Examples</i>	26

Color

CIELCh(73, 43.639, 30.993)

Conversions

Conversions Part 1

Format	Color
Hex	FE978C
RGB	254, 151, 140
RGB Percent	100%, 59%, 55%
CMY	0.0034, 0.4074, 0.4505
CMYK	0.00, 0.41, 0.45, 0.00
HSL	6°, 99%, 77%
HSV	6°, 45%, 100%
XYZ	56.7500, 45.1644, 30.5813
YIQ	180.5430, 64.9190, 18.4150

Conversions

Conversions Part 2

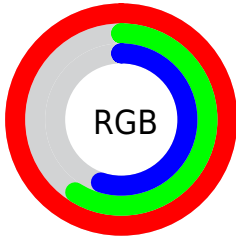
Format	Color
RYB	254, 152, 140
Decimal	16684940
CIELab	73.00, 37.41, 22.47
CIELCh	73, 43.639, 30.993
Yxy	45.1644, 0.4283, 0.3409
Android (android.graphics.Color)	4294875020 (0xFFFE978C)
YUV	180.5430, -19.9877, 64.4218
Hunter-Lab	67.2044, 33.1243, 20.0633

Details

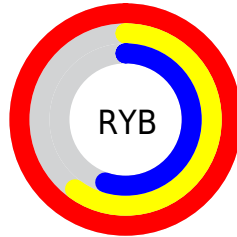
The CIELCh color **73, 43.639, 30.993** is a light color, and the websafe version is hex **FF9999**. A complement of this color would be **90, 30.937, 208.299**, and the grayscale version is **74, 0.009, 296.813**.

A 20% lighter version of the original color is **87, 19.941, 38.832**, and **53, 43.707, 30.696** is the 20% darker color. If you saturate the color by 10%, you get **68, 55.307, 32.380**, and if you desaturate by 10%, it is **79, 32.606, 29.968**.

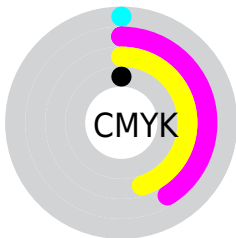
Distribution



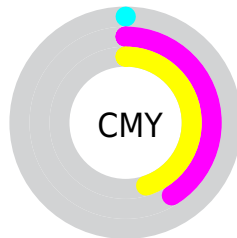
- Red (100%)
- Green (59%)
- Blue (55%)



- Red (100%)
- Yellow (60%)
- Blue (55%)



- Cyan (0%)
- Magenta (41%)
- Yellow (45%)
- Black (0%)



- Cyan (0%)
- Magenta (41%)
- Yellow (45%)


Brightness & Saturation Gradients

These gradients show how the CIELCh color 73, 43.639, 30.993 changes by changing the brightness by 10 percent. The first figure shows a shift by +10% for each color and the second figure -10%.

Similar to the brightness gradients but the following saturation gradients show a change of the CIELCh color 73, 43.639, 30.993 by changing the saturation by 10% instead.

 73, 43.639, 30.993

 73, 43.639, 30.993

 100, 43.639,
30.993

 63, 43.639, 30.993

 93, 43.639, 30.993

 53, 43.639, 30.993

 43, 43.639, 30.993

 33, 43.639, 30.993

 23, 43.639, 30.993

 13, 43.639, 30.993

 3, 43.639, 30.993

 0, 43.639, 30.993

 73, 43.639, 30.993

 73, 43.639, 30.993

68, 55.307, 32.380

79, 32.606, 29.968

63, 67.401, 34.169

84, 22.317, 29.220

59, 79.522, 36.338

90, 12.795, 28.682

56, 90.878, 38.635

97, 4.017, 28.221

54, 99.736, 40.319

100, 0.301,
201.592

54, 102.868,
40.865

Harmonies

Complementary

The Complementary color scheme is a pair of colors which are on the opposite of each other on the color wheel.



73, 43.639, 30.993



90, 30.937, 208.299

Rectangle

The Rectangle color scheme consists of four colors that form a rectangle on the color wheel.



73, 43.639, 30.993



73, 43.639, 80.993



73, 43.639, 210.993



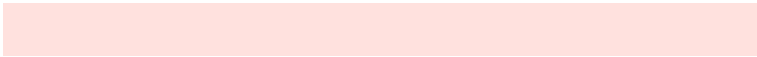
73, 43.639, 260.993

Sweetspot

The Sweet Spot groups the original color and five complimentary colors.



73, 43.637, 30.997



92, 11.133, 28.598



74, 66.451, 329.361



48, 7.863, 28.698



0, 0.000, 0.000



53, 0.007, 296.813

Same Dimension

The Same Dimension uses a secret algorithm to generate beautiful new colors.



73, 43.637, 30.997



69, 54.427, 32.246



86, 40.214, 77.834



50, 4.798, 28.447



41, 82.778, 41.090



11, 31.545, 31.907

Inverse Universe

The Inverse Universe completely reimagines the original color for something new.



90, 30.937, 208.299



89, 35.440, 208.669



75, 37.748, 272.138



52, 4.509, 208.171



65, 36.039, 213.552



21, 16.744, 211.255

Previews

White Background



This preview shows how the CIELCh color 73, 43.639, 30.993 looks on a white background.

Color Contrast Check

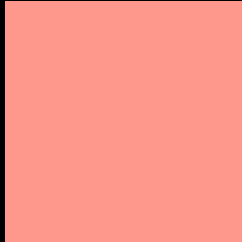
Large Text (above 18pt) WCAG AA × Fail

Any Text WCAG AA × Fail

Large Text (above 18pt) WCAG AAA × Fail

Any Text WCAG AAA × Fail

Black Background



This preview shows how the CIE LCh color 73, 43.639, 30.993 looks on a black background.

Color Contrast Check

Large Text (above 18pt) WCAG AA ✓ Pass

Any Text WCAG AA ✓ Pass

Large Text (above 18pt) WCAG AAA ✓ Pass

Any Text WCAG AAA ✓ Pass

If you want to check with other color combinations, try the [Color Contrast Checker](#).

CIELCh 73, 43.639, 30.993

Background



This preview shows how black text looks on a background with the CIELCh color 73, 43.639, 30.993.

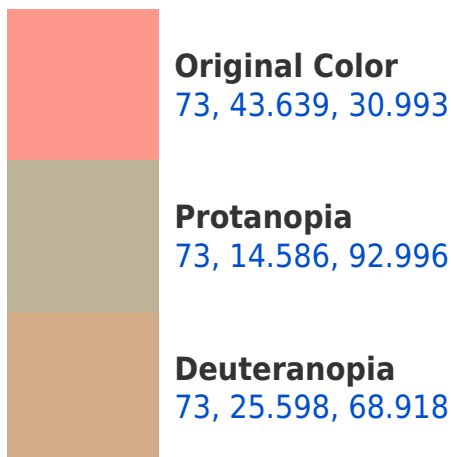


This preview shows how white text looks on a background with the CIELCh color 73, 43.639, 30.993.

Color Blindness Simulation

Color vision deficiency is a very complex topic, and I could not describe the different causes any better than Wikipedia does, so if you want to learn more, you should check out their [article about color blindness](#).

Dichromacy



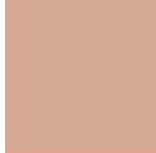


Tritanopia
73, 42.586, 16.604

Trichromacy



Original Color
73, 43.639, 30.993



Protanomaly
73, 21.458, 52.285



Deuteranomaly
73, 30.600, 49.366

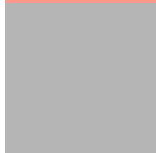


Tritanomaly
73, 42.684, 22.174

Monochromacy



Original Color
73, 43.639, 30.993



Achromatopsia
74, 0.009, 296.813



Achromatomaly
73, 15.108, 28.814

CSS Examples

Text

The CSS property to change the color of the text to CIELCh 73, 43.639, 30.993 is called "color". The color property can be set on classes, ids or directly on the HTML element.

This example shows how text in the color `rgb(254, 151, 140)` looks like.

```
.text, #text, p{  
    color:rgb(254, 151, 140)  
}
```

If you want to add a text shadow in that color use the text-shadow property, you can generate a text shadow directly with our [CSS Text Shadow Generator](#).

Here you see how black text with a 4 pixel rgb(254, 151, 140) colored shadow looks like.

```
.shadow{ text-shadow: 4px 4px 2px rgb(254, 151, 140) }
```

Border

The CSS property to change the border of an element to CIELCh 73, 43.639, 30.993 is called "border". The border property can be set on classes, ids or directly on the HTML element.

This example shows the color as border, it can be applied via the CSS property "border" or "border-color".

```
.border, #border, table{ border:4px solid rgb(254, 151, 140) }
```

If only the border color should be changed use the property `border-color`.

```
.border{ border-color:rgb(254, 151, 140) }
```

If you want to add a box shadow in that color use:

Here you see how a box with a 4 pixel `rgb(254, 151, 140)` colored shadow looks like.

```
.boxshadow{ -moz-box-shadow:4px 4px 4px  
4px rgb(254, 151, 140); -webkit-box-  
shadow:4px 4px 4px 4px rgb(254, 151, 140);  
box-shadow:4px 4px 4px 4px rgb(254, 151,  
140) }
```

Background

The CSS property to change the background color of an element to CIELCh 73, 43.639, 30.993 is called "background". The background property can be set on classes, ids or directly on the HTML element.

```
.background, #background, body{  
background: rgb(254, 151, 140) }
```

If only the background color should be changed can be used:

```
.background{ background-color: rgb(254,  
151, 140) }
```

This example shows the color as background, it is applied via the CSS property "background".

To optimize and compress your CSS code, you can use our [online CSS compressor and optimizer](#) based on csstidy. If you want to create a linear or radial gradient as background or border, check our [CSS Gradient Generator](#).

Hey! You found this booklet interesting? Support Converting Colors with the new Membership Option!

The pro membership hides all ads, plus gives you double the colors in the color bucket, and more awesome pro features!

[Learn more, Memberships starting at \\$2.50/m!](#)

**Follow me
on Twitter!**

@ConvertingColor