

Converting Colors

CIELCh(73, 44.107, 26.759)

Have a look what the booklet for
CIELCh(73, 44.107, 26.759) contains.

CIELCh(73, 43.537, 26.996)	3
<i>Conversions</i>	4
<i>Details</i>	6
<i>Harmonies</i>	11
<i>Previews</i>	20
<i>Color Blindness Simulation</i>	23
<i>CSS Examples</i>	26

Color

CIELCh(73, 43.537, 26.996)

Conversions

Conversions Part 1

Format	Color
Hex	FF9691
RGB	255, 150, 145
RGB Percent	100%, 59%, 57%
CMY	0.0000, 0.4114, 0.4310
CMYK	0.00, 0.41, 0.43, 0.00
HSL	3°, 100%, 78%
HSV	3°, 43%, 100%
XYZ	57.3116, 45.1644, 32.5180
YIQ	180.8250, 64.1850, 20.7050

Conversions

Conversions Part 2

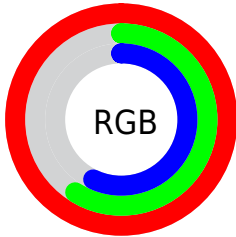
Format	Color
R _Y B	255, 150, 145
Decimal	16750225
CIE Lab	73.00, 38.79, 19.76
CIE LCh	73, 43.537, 26.996
Yxy	45.1644, 0.4245, 0.3346
Android (android.graphics.Color)	4294940305 (0xFFFF9691)
YUV	180.8250, -17.6617, 65.0515
Hunter-Lab	67.2044, 34.6162, 18.3546

Details

The CIELCh color **73, 43.537, 26.996** is a light color, and the websafe version is hex **FF9999**. A complement of this color would be **92, 31.530, 202.237**, and the grayscale version is **74, 0.009, 296.813**.

A 20% lighter version of the original color is **87, 19.356, 30.009**, and **53, 43.515, 26.572** is the 20% darker color. If you saturate the color by 10%, you get **68, 55.384, 28.701**, and if you desaturate by 10%, it is **79, 32.184, 25.709**.

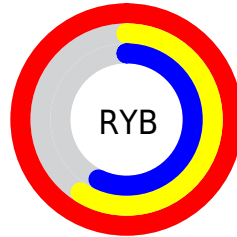
Distribution



Red (100%)

Green (59%)

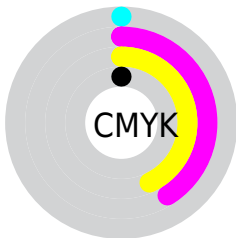
Blue (57%)



Red (100%)

Yellow (59%)

Blue (57%)

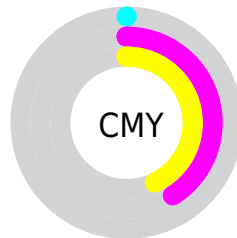


Cyan (0%)

Magenta (41%)

Yellow (43%)

Black (0%)



Cyan (0%)

Magenta (41%)

Yellow (43%)

Brightness & Saturation Gradients

These gradients show how the CIELCh color 73, 43.537, 26.996 changes by changing the brightness by 10 percent. The first figure shows a shift by +10% for each color and the second figure -10%.

Similar to the brightness gradients but the following saturation gradients show a change of the CIELCh color 73, 43.537, 26.996 by changing the saturation by 10% instead.

73, 43.537, 26.996

73, 43.537, 26.996

100, 43.537,
26.996

63, 43.537, 26.996

93, 43.537, 26.996

53, 43.537, 26.996

43, 43.537, 26.996

33, 43.537, 26.996

23, 43.537, 26.996

13, 43.537, 26.996

3, 43.537, 26.996

0, 43.537, 26.996

73, 43.537, 26.996

73, 43.537, 26.996

68, 55.384, 28.701

79, 32.184, 25.709

63, 67.595, 30.896

85, 21.587, 24.737

59, 79.723, 33.596

91, 11.755, 23.996

56, 91.064, 36.592

98, 2.674, 23.272

54, 100.093,
39.161

100, 0.012,
296.813

54, 104.029,
40.322

Harmonies

Complementary

The Complementary color scheme is a pair of colors which are on the opposite of each other on the color wheel.



73, 43.537, 26.996



92, 31.530, 202.237

Rectangle

The Rectangle color scheme consists of four colors that form a rectangle on the color wheel.



73, 43.537, 26.996



73, 43.537, 76.996



73, 43.537, 206.996



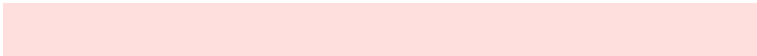
73, 43.537, 256.996

Sweetspot

The Sweet Spot groups the original color and five complimentary colors.



73, 43.496, 26.999



91, 11.656, 23.989



75, 66.398, 327.712



47, 8.230, 24.138



0, 0.000, 0.000



53, 0.007, 296.813

Same Dimension

The Same Dimension uses a secret algorithm to generate beautiful new colors.



73, 43.496, 26.999



68, 54.049, 28.490



85, 37.668, 73.299



50, 5.025, 23.764



40, 83.605, 40.459



10, 32.455, 29.402

Inverse Universe

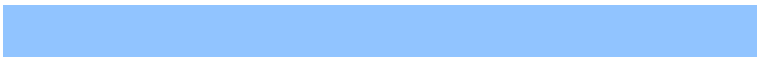
The Inverse Universe completely reimagines the original color for something new.



92, 31.530, 202.237



91, 36.215, 202.211



78, 34.130, 266.784



52, 4.725, 203.094



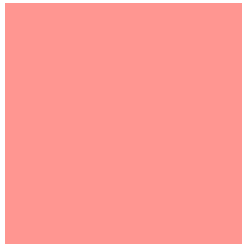
68, 37.964, 203.917



23, 17.584, 202.956

Previews

White Background



This preview shows how the CIELCh color 73, 43.537, 26.996 looks on a white background.

Color Contrast Check

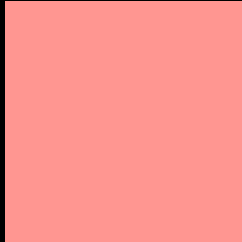
Large Text (above 18pt) WCAG AA × Fail

Any Text WCAG AA × Fail

Large Text (above 18pt) WCAG AAA × Fail

Any Text WCAG AAA × Fail

Black Background



This preview shows how the CIELCh color 73, 43.537, 26.996 looks on a black background.

Color Contrast Check

Large Text (above 18pt) WCAG AA ✓ Pass

Any Text WCAG AA ✓ Pass

Large Text (above 18pt) WCAG AAA ✓ Pass

Any Text WCAG AAA ✓ Pass

If you want to check with other color combinations, try the [Color Contrast Checker](#).

CIELCh 73, 43.537, 26.996

Background



This preview shows how black text looks on a background with the CIELCh color 73, 43.537, 26.996.



This preview shows how white text looks on a background with the CIELCh color 73, 43.537, 26.996.

Color Blindness Simulation

Color vision deficiency is a very complex topic, and I could not describe the different causes any better than Wikipedia does, so if you want to learn more, you should check out their [article about color blindness](#).

Dichromacy



Original Color

73, 43.537, 26.996

Protanopia

73, 11.359, 91.007

Deuteranopia

73, 23.171, 65.973

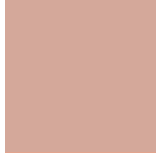


Tritanopia
73, 42.586, 16.604

Trichromacy



Original Color
73, 43.537, 26.996



Protanomaly
72, 19.429, 43.508



Deuteranomaly
73, 28.697, 45.501



Tritanomaly
73, 42.881, 20.155

Monochromacy



Original Color
73, 43.537, 26.996



Achromatopsia
74, 0.009, 296.813



Achromatomaly
73, 14.917, 24.783

CSS Examples

Text

The CSS property to change the color of the text to CIELCh 73, 43.537, 26.996 is called "color". The color property can be set on classes, ids or directly on the HTML element.

This example shows how text in the color `rgb(255, 150, 145)` looks like.

```
.text, #text, p{  
    color:rgb(255, 150, 145)  
}
```

If you want to add a text shadow in that color use the text-shadow property, you can generate a text shadow directly with our [CSS Text Shadow Generator](#).

Here you see how black text with a 4 pixel rgb(255, 150, 145) colored shadow looks like.

```
.shadow{ text-shadow: 4px 4px 2px rgb(255, 150, 145) }
```

Border

The CSS property to change the border of an element to CIELCh 73, 43.537, 26.996 is called "border". The border property can be set on classes, ids or directly on the HTML element.

This example shows the color as border, it can be applied via the CSS property "border" or "border-color".

```
.border, #border, table{ border:4px solid rgb(255, 150, 145) }
```

If only the border color should be changed use the property border-color.

```
.border{ border-color:rgb(255, 150, 145) }
```

If you want to add a box shadow in that color use:

Here you see how a box with a 4 pixel rgb(255, 150, 145) colored shadow looks like.

```
.boxshadow{ -moz-box-shadow:4px 4px 4px  
4px rgb(255, 150, 145); -webkit-box-  
shadow:4px 4px 4px 4px rgb(255, 150, 145);  
box-shadow:4px 4px 4px 4px rgb(255, 150,  
145) }
```

Background

The CSS property to change the background color of an element to CIELCh 73, 43.537, 26.996 is called "background". The background property can be set on classes, ids or directly on the HTML element.

```
.background, #background, body{  
background: rgb(255, 150, 145) }
```

If only the background color should be changed can be used:

```
.background{ background-color: rgb(255,  
150, 145) }
```

This example shows the color as background, it is applied via the CSS property "background".

To optimize and compress your CSS code, you can use our [online CSS compressor and optimizer](#) based on csstidy. If you want to create a linear or radial gradient as background or border, check our [CSS Gradient Generator](#).

Hey! You found this booklet interesting? Support Converting Colors with the new Membership Option!

The pro membership hides all ads, plus gives you double the colors in the color bucket, and more awesome pro features!

[Learn more, Memberships starting at \\$2.50/m!](#)

**Follow me
on Twitter!**

@ConvertingColor