

Converting Colors

CIELCh(73, 44.551, 4.241)

Have a look what the booklet for
CIELCh(73, 44.551, 4.241) contains.

CIELCh(73, 44.332, 3.854)	3
<i>Conversions</i>	4
<i>Details</i>	6
<i>Harmonies</i>	11
<i>Previews</i>	20
<i>Color Blindness Simulation</i>	23
<i>CSS Examples</i>	26

Color

CIELCh(73, 44.332, 3.854)

Conversions

Conversions Part 1

Format	Color
Hex	FF92AF
RGB	255, 146, 175
RGB Percent	100%, 57%, 69%
CMY	0.0000, 0.4257, 0.3120
CMYK	0.00, 0.43, 0.31, 0.00
HSL	344°, 100%, 79%
HSV	344°, 43%, 100%
XYZ	59.5539, 45.1644, 46.3668
YIQ	181.8970, 55.6550, 32.1270

Conversions

Conversions Part 2

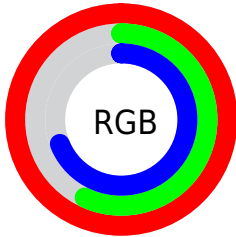
Format	Color
R_{YB}	255, 146, 175
Decimal	16749231
CIE _{Lab}	73.00, 44.23, 2.98
CIE _{LCh}	73, 44.332, 3.854
Yxy	45.1644, 0.3942, 0.2989
Android (android.graphics.Color)	4294939311 (0xFFFF92AF)
YUV	181.8970, -3.4002, 64.1113
Hunter-Lab	67.2044, 40.5719, 6.1368

Details

The CIELCh color **73, 44.332, 3.854** is a light color, and the websafe version is hex **FF99CC**. A complement of this color would be **93, 38.134, 173.844**, and the grayscale version is **74, 0.009, 296.813**.

A 20% lighter version of the original color is **87, 24.042, 343.945**, and **53, 44.321, 3.823** is the 20% darker color. If you saturate the color by 10%, you get **68, 54.667, 5.826**, and if you desaturate by 10%, it is **79, 33.407, 2.060**.

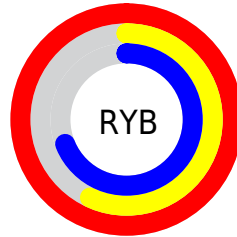
Distribution



Red (100%)

Green (57%)

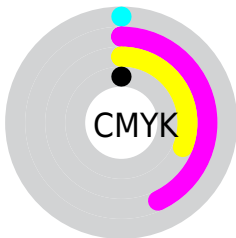
Blue (69%)



Red (100%)

Yellow (57%)

Blue (69%)

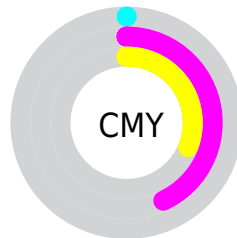


Cyan (0%)

Magenta (43%)

Yellow (31%)

Black (0%)



Cyan (0%)

Magenta (43%)

Yellow (31%)

Brightness & Saturation Gradients

These gradients show how the CIELCh color 73, 44.332, 3.854 changes by changing the brightness by 10 percent. The first figure shows a shift by +10% for each color and the second figure -10%.

Similar to the brightness gradients but the following saturation gradients show a change of the CIELCh color 73, 44.332, 3.854 by changing the saturation by 10% instead.

 73, 44.332, 3.854

 73, 44.332, 3.854

 100, 44.332, 3.854

 63, 44.332, 3.854

 93, 44.332, 3.854

 53, 44.332, 3.854

 43, 44.332, 3.854

 33, 44.332, 3.854

 23, 44.332, 3.854

 13, 44.332, 3.854

 3, 44.332, 3.854

 0, 44.332, 3.854

 73, 44.332, 3.854

 73, 44.332, 3.854

68, 54.667, 5.826

79, 33.407, 2.060

63, 64.521, 8.447

85, 22.759, 0.664

59, 73.242, 11.775

92, 12.412,
359.475

56, 80.483, 15.972

98, 2.480, 358.283

54, 86.238, 21.085

100, 0.012,
296.813

54, 89.936, 25.257

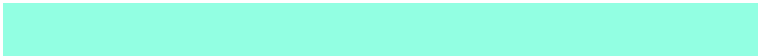
Harmonies

Complementary

The Complementary color scheme is a pair of colors which are on the opposite of each other on the color wheel.



73, 44.332, 3.854



93, 38.134, 173.844

Rectangle

The Rectangle color scheme consists of four colors that form a rectangle on the color wheel.



73, 44.332, 3.854



73, 44.332, 53.854



73, 44.332, 183.854



73, 44.332, 233.854

Sweetspot

The Sweet Spot groups the original color and five complimentary colors.



73, 44.151, 3.744



91, 12.854, 359.523



72, 63.578, 318.081



47, 9.038, 359.774



0, 0.000, 0.000



53, 0.007, 296.813

Same Dimension

The Same Dimension uses a secret algorithm to generate beautiful new colors.



73, 44.151, 3.744



68, 53.052, 5.469



77, 37.935, 41.086



50, 5.578, 359.136



40, 71.912, 24.171



10, 31.611, 14.939

Inverse Universe

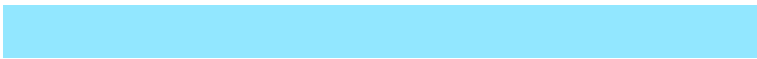
The Inverse Universe completely reimagines the original color for something new.



73, 44.151, 3.744



68, 53.052, 5.469



87, 27.785, 224.443



50, 5.578, 359.136



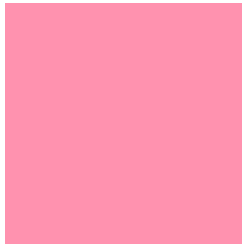
40, 71.912, 24.171



10, 31.611, 14.939

Previews

White Background



This preview shows how the CIELCh color 73, 44.332, 3.854 looks on a white background.

Color Contrast Check

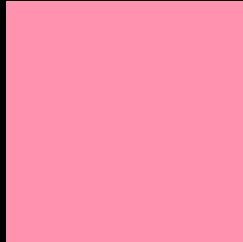
Large Text (above 18pt) WCAG AA × Fail

Any Text WCAG AA × Fail

Large Text (above 18pt) WCAG AAA × Fail

Any Text WCAG AAA × Fail

Black Background



This preview shows how the CIELCh color 73, 44.332, 3.854 looks on a black background.

Color Contrast Check

Large Text (above 18pt) WCAG AA ✓ Pass

Any Text WCAG AA ✓ Pass

Large Text (above 18pt) WCAG AAA ✓ Pass

Any Text WCAG AAA ✓ Pass

If you want to check with other color combinations, try the [Color Contrast Checker](#).

CIELCh 73, 44.332, 3.854

Background



This preview shows how black text looks on a background with the CIELCh color 73, 44.332, 3.854.

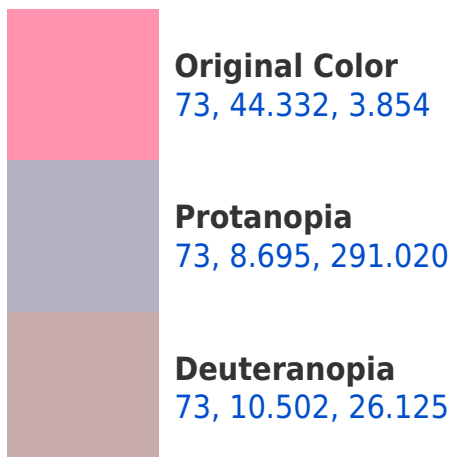


This preview shows how white text looks on a background with the CIELCh color 73, 44.332, 3.854.

Color Blindness Simulation

Color vision deficiency is a very complex topic, and I could not describe the different causes any better than Wikipedia does, so if you want to learn more, you should check out their [article about color blindness](#).

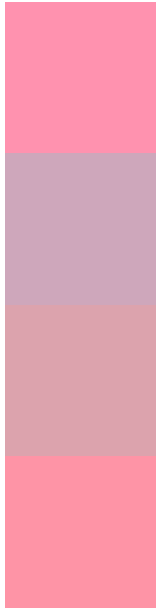
Dichromacy





Tritanopia
73, 42.152, 15.769

Trichromacy



Original Color
73, 44.332, 3.854

Protanomaly
72, 18.203, 344.580

Deuteranomaly
73, 22.738, 7.887

Tritanomaly
73, 42.541, 10.894

Monochromacy



Original Color
73, 44.332, 3.854

Achromatopsia
74, 0.009, 296.813

Achromatomaly
73, 16.359, 359.644

CSS Examples

Text

The CSS property to change the color of the text to CIELCh 73, 44.332, 3.854 is called "color". The color property can be set on classes, ids or directly on the HTML element.

This example shows how text in the color `rgb(255, 146, 175)` looks like.

```
.text, #text, p{  
    color:rgb(255, 146, 175)  
}
```

If you want to add a text shadow in that color use the text-shadow property, you can generate a text shadow directly with our [CSS Text Shadow Generator](#).

Here you see how black text with a 4 pixel rgb(255, 146, 175) colored shadow looks like.

```
.shadow{ text-shadow: 4px 4px 2px rgb(255, 146, 175) }
```

Border

The CSS property to change the border of an element to CIELCh 73, 44.332, 3.854 is called "border". The border property can be set on classes, ids or directly on the HTML element.

This example shows the color as border, it can be applied via the CSS property "border" or "border-color".

```
.border, #border, table{ border:4px solid rgb(255, 146, 175) }
```

If only the border color should be changed use the property `border-color`.

```
.border{ border-color:rgb(255, 146, 175) }
```

If you want to add a box shadow in that color use:

Here you see how a box with a 4 pixel `rgb(255, 146, 175)` colored shadow looks like.

```
.boxshadow{ -moz-box-shadow:4px 4px 4px  
4px rgb(255, 146, 175); -webkit-box-  
shadow:4px 4px 4px 4px rgb(255, 146, 175);  
box-shadow:4px 4px 4px 4px rgb(255, 146,  
175) }
```

Background

The CSS property to change the background color of an element to CIELCh 73, 44.332, 3.854 is called "background". The background property can be set on classes, ids or directly on the HTML element.

```
.background, #background, body{  
background: rgb(255, 146, 175) }
```

If only the background color should be changed can be used:

```
.background{ background-color: rgb(255,  
146, 175) }
```

This example shows the color as background, it is applied via the CSS property "background".

To optimize and compress your CSS code, you can use our [online CSS compressor and optimizer](#) based on csstidy. If you want to create a linear or radial gradient as background or border, check our [CSS Gradient Generator](#).

Hey! You found this booklet interesting? Support Converting Colors with the new Membership Option!

The pro membership hides all ads, plus gives you double the colors in the color bucket, and more awesome pro features!

[Learn more, Memberships starting at \\$2.50/m!](#)

**Follow me
on Twitter!**

@ConvertingColor