

# Converting Colors

CIELCh(73, 48.842, 51.133)

Have a look what the booklet for  
CIELCh(73, 48.842, 51.133) contains.

<b>CIELCh(73, 48.976, 51.151)</b> .....	3
<i><b>Conversions</b></i> .....	4
<i><b>Details</b></i> .....	6
<i><b>Harmonies</b></i> .....	11
<i><b>Previews</b></i> .....	20
<i><b>Color Blindness Simulation</b></i> .....	23
<i><b>CSS Examples</b></i> .....	26

# **Color**

**CIELCh(73, 48.976, 51.151)**

# Conversions

## Conversions Part 1

Format	Color
Hex	FA9C6F
RGB	250, 156, 111
RGB Percent	98%, 61%, 44%
CMY	0.0203, 0.3888, 0.5653
CMYK	0.00, 0.38, 0.56, 0.02
HSL	19°, 93%, 71%
HSV	19°, 56%, 98%
XYZ	54.0885, 45.1644, 20.8652
YIQ	178.9760, 70.4690, 5.9330

# Conversions

## Conversions Part 2

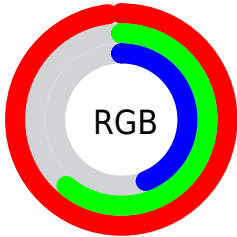
Format	Color
R <sub>Y</sub> B	250, 178, 111
Decimal	16424047
CIE Lab	73.00, 30.72, 38.14
CIE LCh	73, 48.976, 51.151
Yxy	45.1644, 0.4503, 0.3760
Android (android.graphics.Color)	4294614127 (0xFFFA9C6F)
YUV	178.9760, -33.5122, 62.2880
Hunter-Lab	67.2044, 26.0553, 28.6352

# Details

The CIELCh color **73, 48.976, 51.151** is a light color, and the websafe version is hex **FF9966**. A complement of this color would be **78, 34.275, 243.172**, and the grayscale version is **73, 0.009, 296.813**.

A 20% lighter version of the original color is **87, 30.904, 73.087**, and **53, 49.131, 51.192** is the 20% darker color. If you saturate the color by 10%, you get **69, 59.754, 50.840**, and if you desaturate by 10%, it is **77, 38.717, 51.555**.

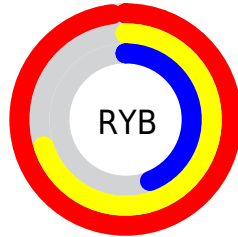
# Distribution



Red (98%)

Green (61%)

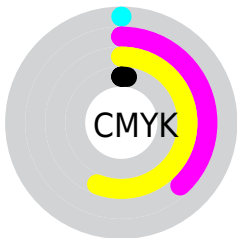
Blue (44%)



Red (98%)

Yellow (70%)

Blue (44%)

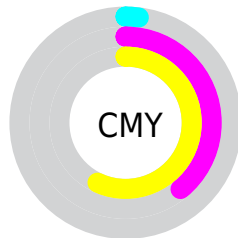


Cyan (0%)

Magenta (38%)

Yellow (56%)

Black (2%)



Cyan (2%)

Magenta (39%)

Yellow (57%)

# Brightness & Saturation Gradients

These gradients show how the CIELCh color 73, 48.976, 51.151 changes by changing the brightness by 10 percent. The first figure shows a shift by +10% for each color and the second figure -10%.

Similar to the brightness gradients but the following saturation gradients show a change of the CIELCh color 73, 48.976, 51.151 by changing the saturation by 10% instead.



73, 48.976, 51.151

73, 48.976, 51.151

100, 48.976,  
51.151

63, 48.976, 51.151

93, 48.976, 51.151

53, 48.976, 51.151

43, 48.976, 51.151

33, 48.976, 51.151

23, 48.976, 51.151

13, 48.976, 51.151

3, 48.976, 51.151

0, 48.976, 51.151

73, 48.976, 51.151

73, 48.976, 51.151

69, 59.754, 50.840

77, 38.717, 51.555

65, 70.731, 50.524

82, 29.101, 52.056

62, 81.152, 49.973

86, 20.148, 52.647

59, 89.558, 48.690

91, 11.833, 53.304

58, 92.536, 47.973

96, 4.105, 53.944

100, 1.794,  
199.661

# Harmonies

# Complementary

The Complementary color scheme is a pair of colors which are on the opposite of each other on the color wheel.



73, 48.976, 51.151



78, 34.275, 243.172

# Rectangle

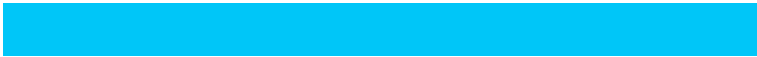
The Rectangle color scheme consists of four colors that form a rectangle on the color wheel.



73, 48.976, 51.151



73, 48.976, 101.151



73, 48.976, 231.151



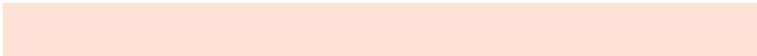
73, 48.976, 281.151

# Sweetspot

The Sweet Spot groups the original color and five complimentary colors.



73, 48.974, 51.155



92, 13.157, 53.210



67, 67.849, 339.606



48, 8.867, 53.075



0, 0.000, 0.000



53, 0.007, 296.813



# Same Dimension

The Same Dimension uses a secret algorithm to generate beautiful new colors.



73, 48.974, 51.155



70, 62.302, 50.797



89, 58.058, 94.778



50, 4.209, 53.714



44, 74.471, 48.569



13, 27.028, 45.206





# Inverse Universe

The Inverse Universe completely reimagines the original color for something new.



78, 34.275, 243.172



76, 39.984, 246.683



60, 63.949, 291.165



50, 4.010, 235.415



51, 40.660, 260.507



15, 17.230, 252.960



# Previews

## White Background



This preview shows how the CIELCh color 73, 48.976, 51.151 looks on a white background.

## Color Contrast Check

Large Text (above 18pt) WCAG AA × Fail

Any Text WCAG AA × Fail

Large Text (above 18pt) WCAG AAA × Fail

Any Text WCAG AAA × Fail

# Black Background



This preview shows how the CIELCh color 73, 48.976, 51.151 looks on a black background.

## Color Contrast Check

Large Text (above 18pt) WCAG AA ✓ Pass

Any Text WCAG AA ✓ Pass

Large Text (above 18pt) WCAG AAA ✓ Pass

Any Text WCAG AAA ✓ Pass

If you want to check with other color combinations, try the [Color Contrast Checker](#).

# CIELCh 73, 48.976, 51.151

## Background



This preview shows how black text looks on a background with the CIELCh color 73, 48.976, 51.151.

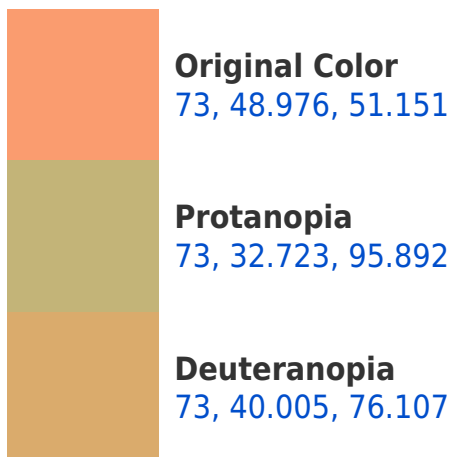


This preview shows how white text looks on a background with the CIELCh color 73, 48.976, 51.151.

# Color Blindness Simulation

Color vision deficiency is a very complex topic, and I could not describe the different causes any better than Wikipedia does, so if you want to learn more, you should check out their [article about color blindness](#).

## Dichromacy





**Tritanopia**  
73, 41.755, 15.647



# Trichromacy



**Original Color**  
73, 48.976, 51.151



**Protanomaly**  
73, 35.099, 74.738



**Deuteranomaly**  
73, 42.293, 65.092

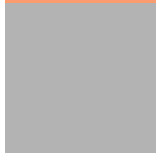


**Tritanomaly**  
73, 42.452, 29.724

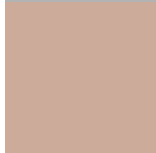
# Monochromacy



**Original Color**  
73, 48.976, 51.151



**Achromatopsia**  
73, 0.009, 296.813



**Achromatomaly**  
73, 16.575, 53.795

# CSS Examples

## Text

The CSS property to change the color of the text to CIELCh 73, 48.976, 51.151 is called "color". The color property can be set on classes, ids or directly on the HTML element.

This example shows how text in the color `rgb(250, 156, 111)` looks like.

```
.text, #text, p{  
    color:rgb(250, 156, 111)  
}
```

If you want to add a text shadow in that color use the text-shadow property, you can generate a text shadow directly with our [CSS Text Shadow Generator](#).

Here you see how black text with a 4 pixel rgb(250, 156, 111) colored shadow looks like.

```
.shadow{ text-shadow: 4px 4px 2px rgb(250, 156, 111) }
```

## Border

The CSS property to change the border of an element to CIELCh 73, 48.976, 51.151 is called "border". The border property can be set on classes, ids or directly on the HTML element.

This example shows the color as border, it can be applied via the CSS property "border" or "border-color".

```
.border, #border, table{ border:4px solid rgb(250, 156, 111) }
```

If only the border color should be changed use the property `border-color`.

```
.border{ border-color:rgb(250, 156, 111) }
```

If you want to add a box shadow in that color use:

Here you see how a box with a 4 pixel `rgb(250, 156, 111)` colored shadow looks like.

```
.boxshadow{ -moz-box-shadow:4px 4px 4px  
4px rgb(250, 156, 111); -webkit-box-  
shadow:4px 4px 4px 4px rgb(250, 156, 111);  
box-shadow:4px 4px 4px 4px rgb(250, 156,  
111) }
```

# Background

The CSS property to change the background color of an element to CIELCh 73, 48.976, 51.151 is called "background". The background property can be set on classes, ids or directly on the HTML element.

```
.background, #background, body{  
background: rgb(250, 156, 111) }
```

If only the background color should be changed can be used:

```
.background{ background-color: rgb(250,  
156, 111) }
```

This example shows the color as background, it is applied via the CSS property "background".

To optimize and compress your CSS code, you can use our [online CSS compressor and optimizer](#) based on csstidy. If you want to create a linear or radial gradient as background or border, check our [CSS Gradient Generator](#).

Hey! You found this booklet interesting? Support Converting Colors with the new Membership Option!

The pro membership hides all ads, plus gives you double the colors in the color bucket, and more awesome pro features!

**[Learn more, Memberships starting at \\$2.50/m!](#)**

**Follow me  
on Twitter!**

@ConvertingColor