

Converting Colors

CIELCh(73, 6.844, 0.675)

Have a look what the booklet for
CIELCh(73, 6.844, 0.675) contains.

CIELCh(73, 6.792, 1.360)	3
<i>Conversions</i>	4
<i>Details</i>	6
<i>Harmonies</i>	11
<i>Previews</i>	20
<i>Color Blindness Simulation</i>	23
<i>CSS Examples</i>	26

Color

CIELCh(73, 6.792, 1.360)

Conversions

Conversions Part 1

Format	Color
Hex	C0AFB3
RGB	192, 175, 179
RGB Percent	75%, 69%, 70%
CMY	0.2467, 0.3134, 0.2977
CMYK	0.00, 0.09, 0.07, 0.25
HSL	346°, 12%, 72%
HSV	346°, 9%, 75%
XYZ	45.2474, 45.1644, 49.0215
YIQ	180.5390, 8.8480, 4.8480

Conversions

Conversions Part 2

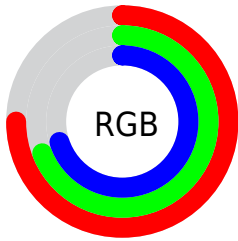
Format	Color
RYB	192, 175, 179
Decimal	12627891
CIELab	73.00, 6.79, 0.16
CIELCh	73, 6.792, 1.360
Yxy	45.1644, 0.3245, 0.3239
Android (android.graphics.Color)	4290817971 (0xFFC0AFB3)
YUV	180.5390, -0.7587, 10.0513
Hunter-Lab	67.2044, 2.5727, 3.7947

Details

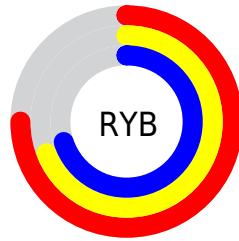
The CIELCh color $73, 6.792, 1.360$ is a light color, and the websafe version is hex `CCCCCC`. A complement of this color would be $76, 6.580, 179.885$, and the grayscale version is $74, 0.009, 296.813$.

A 20% lighter version of the original color is $93, 6.444, 1.153$, and $53, 6.312, 4.183$ is the 20% darker color. If you saturate the color by 10%, you get $68, 14.805, 2.490$, and if you desaturate by 10%, it is $78, 0.856, 181.078$.

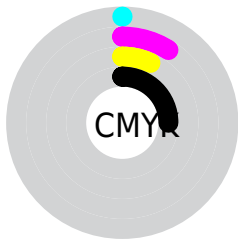
Distribution



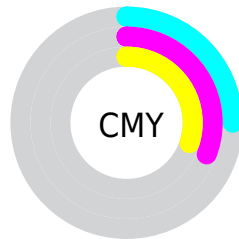
- Red (75%)
- Green (69%)
- Blue (70%)



- Red (75%)
- Yellow (69%)
- Blue (70%)



- Cyan (0%)
- Magenta (9%)
- Yellow (7%)
- Black (25%)



- Cyan (25%)
- Magenta (31%)
- Yellow (30%)

Brightness & Saturation Gradients

These gradients show how the CIELCh color 73, 6.792, 1.360 changes by changing the brightness by 10 percent. The first figure shows a shift by +10% for each color and the second figure -10%.

Similar to the brightness gradients but the following saturation gradients show a change of the CIELCh color 73, 6.792, 1.360 by changing the saturation by 10% instead.

 73, 6.792, 1.360

 73, 6.792, 1.360

 100, 6.792, 1.360

 63, 6.792, 1.360

 93, 6.792, 1.360

 53, 6.792, 1.360

 43, 6.792, 1.360

 33, 6.792, 1.360

 23, 6.792, 1.360

 13, 6.792, 1.360

 3, 6.792, 1.360

 0, 6.792, 1.360

 73, 6.792, 1.360

 73, 6.792, 1.360

68, 14.805, 2.490

78, 0.856, 181.078

63, 23.131, 3.780

84, 8.119, 179.761

58, 31.654, 5.327

89, 15.007,
179.016

53, 40.176, 7.224

95, 21.542,
178.365

49, 48.413, 9.596

46, 56.020, 12.592

96, 20.658,
194.608

43, 62.679, 16.369

96, 20.486,
198.157

41, 68.242, 21.014

40, 72.968, 26.288

Harmonies

Complementary

The Complementary color scheme is a pair of colors which are on the opposite of each other on the color wheel.



73, 6.792, 1.360



76, 6.580, 179.885

Rectangle

The Rectangle color scheme consists of four colors that form a rectangle on the color wheel.



73, 6.792, 1.360



73, 6.792, 51.360



73, 6.792, 181.360



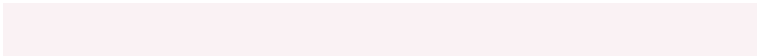
73, 6.792, 231.360

Sweetspot

The Sweet Spot groups the original color and five complimentary colors.



73, 6.790, 1.371



96, 2.813, 0.677



73, 10.401, 317.651



51, 2.135, 0.796



99, 0.012, 296.813



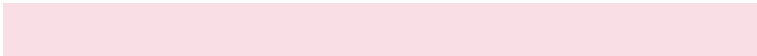
52, 0.007, 296.813

Same Dimension

The Same Dimension uses a secret algorithm to generate beautiful new colors.



73, 6.790, 1.371



91, 10.510, 1.622



74, 5.361, 44.948



38, 4.387, 1.427



33, 64.019, 26.042



3, 14.389, 6.788

Inverse Universe

The Inverse Universe completely reimagines the original color for something new.



73, 6.790, 1.371



91, 10.510, 1.622



75, 5.093, 225.972



38, 4.387, 1.427



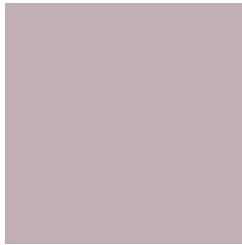
33, 64.019, 26.042



3, 14.389, 6.788

Previews

White Background



This preview shows how the CIELCh color 73, 6.792, 1.360 looks on a white background.

Color Contrast Check

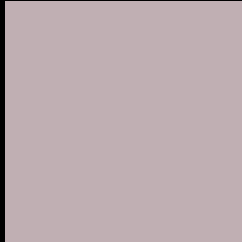
Large Text (above 18pt) WCAG AA × Fail

Any Text WCAG AA × Fail

Large Text (above 18pt) WCAG AAA × Fail

Any Text WCAG AAA × Fail

Black Background



This preview shows how the CIELCh color 73, 6.792, 1.360 looks on a black background.

Color Contrast Check

Large Text (above 18pt) WCAG AA ✓ Pass

Any Text WCAG AA ✓ Pass

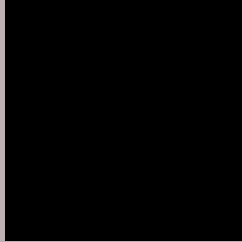
Large Text (above 18pt) WCAG AAA ✓ Pass

Any Text WCAG AAA ✓ Pass

If you want to check with other color combinations, try the [Color Contrast Checker](#).

CIELCh 73, 6.792, 1.360

Background



This preview shows how black text looks on a background with the CIELCh color 73, 6.792, 1.360.



This preview shows how white text looks on a background with the CIELCh color 73, 6.792, 1.360.

Color Blindness Simulation

Color vision deficiency is a very complex topic, and I could not describe the different causes any better than Wikipedia does, so if you want to learn more, you should check out their [article about color blindness](#).

Dichromacy



Original Color

73, 6.792, 1.360

Protanopia

73, 2.227, 332.344

Deuteranopia

73, 8.779, 2.210



Tritanopia
73, 10.025, 335.577

Trichromacy



Original Color

73, 6.792, 1.360

Protanomaly

73, 3.763, 354.014

Deuteranomaly

73, 8.414, 1.362

Tritanomaly

73, 8.974, 343.016

Monochromacy



Original Color

73, 6.792, 1.360

Achromatopsia

74, 0.009, 296.813

Achromatomaly

73, 2.320, 5.896

CSS Examples

Text

The CSS property to change the color of the text to CIELCh 73, 6.792, 1.360 is called "color". The color property can be set on classes, ids or directly on the HTML element.

This example shows how text in the color `rgb(192, 175, 179)` looks like.

```
.text, #text, p{  
    color:rgb(192, 175, 179)  
}
```

If you want to add a text shadow in that color use the text-shadow property, you can generate a text shadow directly with our [CSS Text Shadow Generator](#).

Here you see how black text with a 4 pixel rgb(192, 175, 179) colored shadow looks like.

```
.shadow{ text-shadow: 4px 4px 2px rgb(192, 175, 179) }
```

Border

The CSS property to change the border of an element to CIELCh 73, 6.792, 1.360 is called "border". The border property can be set on classes, ids or directly on the HTML element.

This example shows the color as border, it can be applied via the CSS property "border" or "border-color".

```
.border, #border, table{ border:4px solid rgb(192, 175, 179) }
```

If only the border color should be changed use the property `border-color`.

```
.border{ border-color:rgb(192, 175, 179) }
```

If you want to add a box shadow in that color use:

Here you see how a box with a 4 pixel `rgb(192, 175, 179)` colored shadow looks like.

```
.boxshadow{ -moz-box-shadow:4px 4px 4px  
4px rgb(192, 175, 179); -webkit-box-  
shadow:4px 4px 4px 4px rgb(192, 175, 179);  
box-shadow:4px 4px 4px 4px rgb(192, 175,  
179) }
```

Background

The CSS property to change the background color of an element to CIELCh 73, 6.792, 1.360 is called "background". The background property can be set on classes, ids or directly on the HTML element.

```
.background, #background, body{  
background: rgb(192, 175, 179) }
```

If only the background color should be changed can be used:

```
.background{ background-color: rgb(192,  
175, 179) }
```

This example shows the color as background, it is applied via the CSS property "background".

To optimize and compress your CSS code, you can use our [online CSS compressor and optimizer](#) based on csstidy. If you want to create a linear or radial gradient as background or border, check our [CSS Gradient Generator](#).

Hey! You found this booklet interesting? Support Converting Colors with the new Membership Option!

The pro membership hides all ads, plus gives you double the colors in the color bucket, and more awesome pro features!

[Learn more, Memberships starting at \\$2.50/m!](#)

**Follow me
on Twitter!**

@ConvertingColor