

Converting Colors

CIELCh(73, 7.001, 37.375)

Have a look what the booklet for
CIELCh(73, 7.001, 37.375) contains.

CIELCh(73, 6.869, 38.154)	3
<i>Conversions</i>	4
<i>Details</i>	6
<i>Harmonies</i>	11
<i>Previews</i>	20
<i>Color Blindness Simulation</i>	23
<i>CSS Examples</i>	26

Color

CIELCh(73, 6.869, 38.154)

Conversions

Conversions Part 1

Format	Color
Hex	C1B0AC
RGB	193, 176, 172
RGB Percent	76%, 69%, 67%
CMY	0.2446, 0.3112, 0.3269
CMYK	0.00, 0.09, 0.11, 0.24
HSL	11°, 14%, 71%
HSV	11°, 11%, 76%
XYZ	44.7663, 45.1644, 45.2083
YIQ	180.6270, 11.4160, 2.3600

Conversions

Conversions Part 2

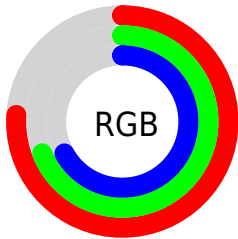
Format	Color
RYB	193, 177, 172
Decimal	12693676
CIELab	73.00, 5.40, 4.24
CIElCh	73, 6.869, 38.154
Yxy	45.1644, 0.3313, 0.3342
Android (android.graphics.Color)	4290883756 (0xFFC1B0AC)
YUV	180.6270, -4.2531, 10.8511
Hunter-Lab	67.2044, 1.2949, 7.1589

Details

The CIELCh color $73, 6.869, 38.154$ is a light color, and the websafe version is hex `CCCCCC`. A complement of this color would be $75, 6.414, 218.749$, and the grayscale version is $73, 0.009, 296.813$.

A 20% lighter version of the original color is $93, 7.017, 41.172$, and $53, 6.593, 40.350$ is the 20% darker color. If you saturate the color by 10%, you get $69, 13.726, 38.180$, and if you desaturate by 10%, it is $78, 0.541, 37.405$.

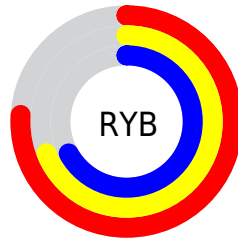
Distribution



Red (76%)

Green (69%)

Blue (67%)



Red (76%)

Yellow (69%)

Blue (67%)

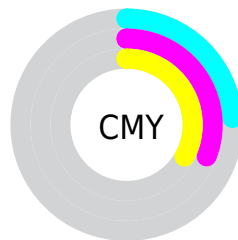


Cyan (0%)

Magenta (9%)

Yellow (11%)

Black (24%)



Cyan (24%)

Magenta (31%)

Yellow (33%)

Brightness & Saturation Gradients

These gradients show how the CIELCh color 73, 6.869, 38.154 changes by changing the brightness by 10 percent. The first figure shows a shift by +10% for each color and the second figure -10%.

Similar to the brightness gradients but the following saturation gradients show a change of the CIELCh color 73, 6.869, 38.154 by changing the saturation by 10% instead.

 73, 6.869, 38.154

 73, 6.869, 38.154

 100, 6.869, 38.154

 63, 6.869, 38.154

 93, 6.869, 38.154

 53, 6.869, 38.154

 43, 6.869, 38.154

 33, 6.869, 38.154

 23, 6.869, 38.154

 13, 6.869, 38.154

 3, 6.869, 38.154

 0, 6.869, 38.154

 73, 6.869, 38.154

 73, 6.869, 38.154

69, 13.726, 38.180

78, 0.541, 37.405

64, 21.157, 38.300

82, 5.306, 218.697

60, 29.187, 38.587

87, 10.724,
218.915

56, 37.807, 39.086

91, 15.765,
219.207

52, 46.950, 39.826

49, 56.446, 40.799

96, 19.853,
200.283

46, 65.910, 41.892

96, 20.320,
198.167

44, 74.482, 42.739

42, 80.747, 43.153

Harmonies

Complementary

The Complementary color scheme is a pair of colors which are on the opposite of each other on the color wheel.



73, 6.869, 38.154



75, 6.414, 218.749

Rectangle

The Rectangle color scheme consists of four colors that form a rectangle on the color wheel.



73, 6.869, 38.154



73, 6.869, 88.154



73, 6.869, 218.154



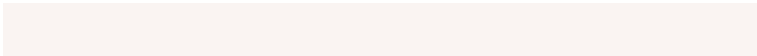
73, 6.869, 268.154

Sweetspot

The Sweet Spot groups the original color and five complimentary colors.



73, 6.868, 38.172



97, 2.262, 38.063



72, 12.184, 330.593



51, 1.720, 38.111



99, 0.012, 296.813



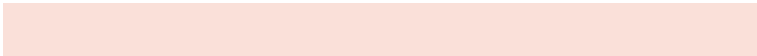
52, 0.007, 296.813

Same Dimension

The Same Dimension uses a secret algorithm to generate beautiful new colors.



73, 6.868, 38.172



91, 10.219, 38.169



76, 8.097, 91.073



39, 3.568, 38.174



35, 70.219, 43.430



4, 12.476, 31.189

Inverse Universe

The Inverse Universe completely reimagines the original color for something new.



75, 6.414, 218.749



94, 9.395, 218.813



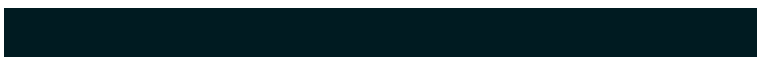
73, 8.106, 273.877



40, 3.366, 218.715



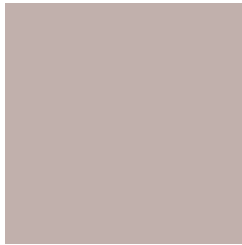
50, 30.954, 233.084



8, 10.427, 225.580

Previews

White Background



This preview shows how the CIELCh color 73, 6.869, 38.154 looks on a white background.

Color Contrast Check

Large Text (above 18pt) WCAG AA × Fail

Any Text WCAG AA × Fail

Large Text (above 18pt) WCAG AAA × Fail

Any Text WCAG AAA × Fail

Black Background



This preview shows how the CIELCh color 73, 6.869, 38.154 looks on a black background.

Color Contrast Check

Large Text (above 18pt) WCAG AA ✓ Pass

Any Text WCAG AA ✓ Pass

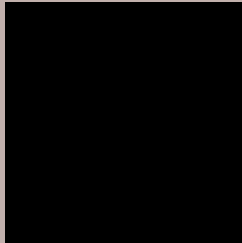
Large Text (above 18pt) WCAG AAA ✓ Pass

Any Text WCAG AAA ✓ Pass

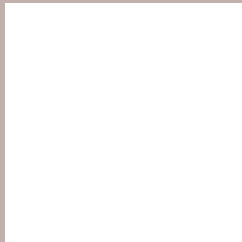
If you want to check with other color combinations, try the [Color Contrast Checker](#).

CIELCh 73, 6.869, 38.154

Background



This preview shows how black text looks on a background with the CIELCh color 73, 6.869, 38.154.



This preview shows how white text looks on a background with the CIELCh color 73, 6.869, 38.154.

Color Blindness Simulation

Color vision deficiency is a very complex topic, and I could not describe the different causes any better than Wikipedia does, so if you want to learn more, you should check out their [article about color blindness](#).

Dichromacy



Original Color

73, 6.869, 38.154

Protanopia

73, 3.520, 69.556

Deuteranopia

73, 10.043, 23.285



Tritanopia
73, 11.211, 337.769

Trichromacy



Original Color
73, 6.869, 38.154

Protanomaly
73, 4.368, 49.241

Deuteranomaly
73, 8.923, 27.029

Tritanomaly
73, 8.458, 353.500

Monochromacy



Original Color
73, 6.869, 38.154

Achromatopsia
73, 0.009, 296.813

Achromatomaly
73, 2.687, 31.038

CSS Examples

Text

The CSS property to change the color of the text to CIELCh 73, 6.869, 38.154 is called "color". The color property can be set on classes, ids or directly on the HTML element.

This example shows how text in the color `rgb(193, 176, 172)` looks like.

```
.text, #text, p{  
    color:rgb(193, 176, 172)  
}
```

If you want to add a text shadow in that color use the text-shadow property, you can generate a text shadow directly with our [CSS Text Shadow Generator](#).

Here you see how black text with a 4 pixel rgb(193, 176, 172) colored shadow looks like.

```
.shadow{ text-shadow: 4px 4px 2px rgb(193, 176, 172) }
```

Border

The CSS property to change the border of an element to CIELCh 73, 6.869, 38.154 is called "border". The border property can be set on classes, ids or directly on the HTML element.

This example shows the color as border, it can be applied via the CSS property "border" or "border-color".

```
.border, #border, table{ border:4px solid rgb(193, 176, 172) }
```

If only the border color should be changed use the property `border-color`.

```
.border{ border-color:rgb(193, 176, 172) }
```

If you want to add a box shadow in that color use:

Here you see how a box with a 4 pixel `rgb(193, 176, 172)` colored shadow looks like.

```
.boxshadow{ -moz-box-shadow:4px 4px 4px  
4px rgb(193, 176, 172); -webkit-box-  
shadow:4px 4px 4px 4px rgb(193, 176, 172);  
box-shadow:4px 4px 4px 4px rgb(193, 176,  
172) }
```

Background

The CSS property to change the background color of an element to CIELCh 73, 6.869, 38.154 is called "background". The background property can be set on classes, ids or directly on the HTML element.

```
.background, #background, body{  
background: rgb(193, 176, 172) }
```

If only the background color should be changed can be used:

```
.background{ background-color: rgb(193,  
176, 172) }
```

This example shows the color as background, it is applied via the CSS property "background".

To optimize and compress your CSS code, you can use our [online CSS compressor and optimizer](#) based on csstidy. If you want to create a linear or radial gradient as background or border, check our [CSS Gradient Generator](#).

Hey! You found this booklet interesting? Support Converting Colors with the new Membership Option!

The pro membership hides all ads, plus gives you double the colors in the color bucket, and more awesome pro features!

[Learn more, Memberships starting at \\$2.50/m!](#)

**Follow me
on Twitter!**

@ConvertingColor