

Converting Colors

CIELCh(73, 7.864, 66.313)

Have a look what the booklet for
CIELCh(73, 7.864, 66.313) contains.

CIELCh(73, 8.050, 67.153)	3
<i>Conversions</i>	4
<i>Details</i>	6
<i>Harmonies</i>	11
<i>Previews</i>	20
<i>Color Blindness Simulation</i>	23
<i>CSS Examples</i>	26

Color

CIELCh(73, 8.050, 67.153)

Conversions

Conversions Part 1

Format	Color
Hex	BFB1A6
RGB	191, 177, 166
RGB Percent	75%, 69%, 65%
CMY	0.2518, 0.3066, 0.3498
CMYK	0.00, 0.07, 0.13, 0.25
HSL	26°, 16%, 70%
HSV	26°, 13%, 75%
XYZ	43.9852, 45.1644, 42.3833
YIQ	179.9320, 11.8750, -0.4530

Conversions

Conversions Part 2

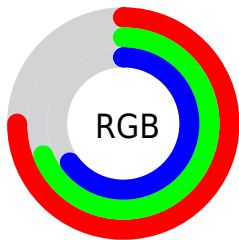
Format	Color
RYB	191, 186, 166
Decimal	12562854
CIELab	73.00, 3.13, 7.42
CIELCh	73, 8.050, 67.153
Yxy	45.1644, 0.3344, 0.3434
Android (android.graphics.Color)	4290752934 (0xFFBFB1A6)
YUV	179.9320, -6.8685, 9.7066
Hunter-Lab	67.2044, -0.7798, 9.6511

Details

The CIELCh color $73, 8.050, 67.153$ is a light color, and the websafe version is hex `CCCCCC`. A complement of this color would be $72, 7.696, 250.349$, and the grayscale version is $73, 0.009, 296.813$.

A 20% lighter version of the original color is $93, 8.004, 69.852$, and $53, 7.930, 66.209$ is the 20% darker color. If you saturate the color by 10%, you get $70, 14.605, 66.079$, and if you desaturate by 10%, it is $76, 1.849, 68.115$.

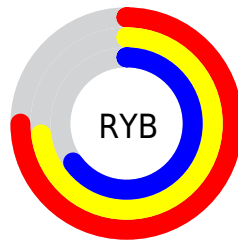
Distribution



Red (75%)

Green (69%)

Blue (65%)



Red (75%)

Yellow (73%)

Blue (65%)

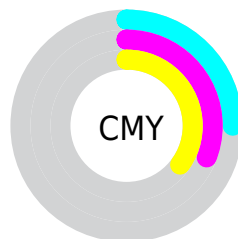


Cyan (0%)

Magenta (7%)

Yellow (13%)

Black (25%)



Cyan (25%)

Magenta (31%)

Yellow (35%)

Brightness & Saturation Gradients

These gradients show how the CIELCh color 73, 8.050, 67.153 changes by changing the brightness by 10 percent. The first figure shows a shift by +10% for each color and the second figure -10%.

Similar to the brightness gradients but the following saturation gradients show a change of the CIELCh color 73, 8.050, 67.153 by changing the saturation by 10% instead.

 73, 8.050, 67.153  73, 8.050, 67.153

 100, 8.050, 67.153  63, 8.050, 67.153

 93, 8.050, 67.153  53, 8.050, 67.153

 43, 8.050, 67.153

 33, 8.050, 67.153

 23, 8.050, 67.153

 13, 8.050, 67.153

 3, 8.050, 67.153

 0, 8.050, 67.153

 73, 8.050, 67.153  73, 8.050, 67.153

70, 14.605, 66.079

76, 1.849, 68.115

67, 21.542, 64.985

80, 4.032, 249.532

64, 28.874, 63.903

83, 9.627, 250.556

61, 36.582, 62.836

86, 14.970,
251.597

58, 44.582, 61.765

89, 17.820,
245.450

55, 52.661, 60.626

53, 60.354, 59.265

92, 17.584,
223.121

50, 66.809, 57.369

95, 19.769,
203.336

49, 70.505, 55.843

96, 20.863,
198.133

Harmonies

Complementary

The Complementary color scheme is a pair of colors which are on the opposite of each other on the color wheel.



73, 8.050, 67.153



72, 7.696, 250.349

Rectangle

The Rectangle color scheme consists of four colors that form a rectangle on the color wheel.



73, 8.050, 67.153



73, 8.050, 117.153



73, 8.050, 247.153



73, 8.050, 297.153

Sweetspot

The Sweet Spot groups the original color and five complimentary colors.



73, 8.050, 67.170



96, 2.956, 68.060



71, 12.202, 341.229



51, 2.123, 68.002



99, 0.012, 296.813



52, 0.007, 296.813

Same Dimension

The Same Dimension uses a secret algorithm to generate beautiful new colors.



73, 8.050, 67.170



91, 12.249, 66.828



76, 12.494, 106.037



38, 3.415, 67.567



41, 61.104, 56.419



5, 10.034, 53.131

Inverse Universe

The Inverse Universe completely reimagines the original color for something new.



72, 7.696, 250.349



90, 11.566, 250.792



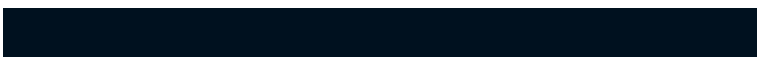
69, 12.818, 288.816



38, 3.312, 249.864



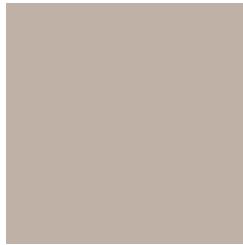
37, 44.264, 276.907



5, 10.881, 262.997

Previews

White Background



This preview shows how the CIELCh color 73, 8.050, 67.153 looks on a white background.

Color Contrast Check

Large Text (above 18pt) WCAG AA × Fail

Any Text WCAG AA × Fail

Large Text (above 18pt) WCAG AAA × Fail

Any Text WCAG AAA × Fail

Black Background



This preview shows how the CIELCh color 73, 8.050, 67.153 looks on a black background.

Color Contrast Check

Large Text (above 18pt) WCAG AA ✓ Pass

Any Text WCAG AA ✓ Pass

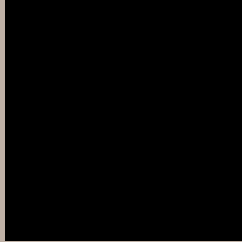
Large Text (above 18pt) WCAG AAA ✓ Pass

Any Text WCAG AAA ✓ Pass

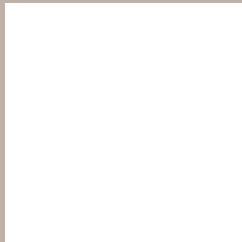
If you want to check with other color combinations, try the [Color Contrast Checker](#).

CIELCh 73, 8.050, 67.153

Background



This preview shows how black text looks on a background with the CIELCh color 73, 8.050, 67.153.



This preview shows how white text looks on a background with the CIELCh color 73, 8.050, 67.153.

Color Blindness Simulation

Color vision deficiency is a very complex topic, and I could not describe the different causes any better than Wikipedia does, so if you want to learn more, you should check out their [article about color blindness](#).

Dichromacy



Original Color

73, 8.050, 67.153

Protanopia

73, 6.872, 89.897

Deuteranopia

73, 11.417, 36.671



Tritanopia
73, 10.293, 337.084

Trichromacy



Original Color
73, 8.050, 67.153

Protanomaly
73, 6.874, 79.254

Deuteranomaly
73, 9.728, 42.865

Tritanomaly
73, 7.156, 2.379

Monochromacy



Original Color
73, 8.050, 67.153

Achromatopsia
73, 0.009, 296.813

Achromatomaly
73, 2.856, 68.494

CSS Examples

Text

The CSS property to change the color of the text to CIELCh 73, 8.050, 67.153 is called "color". The color property can be set on classes, ids or directly on the HTML element.

This example shows how text in the color `rgb(191, 177, 166)` looks like.

```
.text, #text, p{  
    color:rgb(191, 177, 166)  
}
```

If you want to add a text shadow in that color use the text-shadow property, you can generate a text shadow directly with our [CSS Text Shadow Generator](#).

Here you see how black text with a 4 pixel rgb(191, 177, 166) colored shadow looks like.

```
.shadow{ text-shadow: 4px 4px 2px rgb(191, 177, 166) }
```

Border

The CSS property to change the border of an element to CIELCh 73, 8.050, 67.153 is called "border". The border property can be set on classes, ids or directly on the HTML element.

This example shows the color as border, it can be applied via the CSS property "border" or "border-color".

```
.border, #border, table{ border:4px solid rgb(191, 177, 166) }
```

If only the border color should be changed use the property border-color.

```
.border{ border-color:rgb(191, 177, 166) }
```

If you want to add a box shadow in that color use:

Here you see how a box with a 4 pixel rgb(191, 177, 166) colored shadow looks like.

```
.boxshadow{ -moz-box-shadow:4px 4px 4px  
4px rgb(191, 177, 166); -webkit-box-  
shadow:4px 4px 4px 4px rgb(191, 177, 166);  
box-shadow:4px 4px 4px 4px rgb(191, 177,  
166) }
```

Background

The CSS property to change the background color of an element to CIELCh 73, 8.050, 67.153 is called "background". The background property can be set on classes, ids or directly on the HTML element.

```
.background, #background, body{  
background: rgb(191, 177, 166) }
```

If only the background color should be changed can be used:

```
.background{ background-color: rgb(191,  
177, 166) }
```

This example shows the color as background, it is applied via the CSS property "background".

To optimize and compress your CSS code, you can use our [online CSS compressor and optimizer](#) based on csstidy. If you want to create a linear or radial gradient as background or border, check our [CSS Gradient Generator](#).

Hey! You found this booklet interesting? Support Converting Colors with the new Membership Option!

The pro membership hides all ads, plus gives you double the colors in the color bucket, and more awesome pro features!

[Learn more, Memberships starting at \\$2.50/m!](#)

**Follow me
on Twitter!**

@ConvertingColor