

Converting Colors

CIELCh(73, 7.957, 338.737)

Have a look what the booklet for
CIELCh(73, 7.957, 338.737) contains.

CIELCh(73, 8.099, 338.053)	3
<i>Conversions</i>	4
<i>Details</i>	6
<i>Harmonies</i>	12
<i>Previews</i>	21
<i>Color Blindness Simulation</i>	24
<i>CSS Examples</i>	27

Color

CIELCh(73, 8.099, 338.053)

Conversions

Conversions Part 1

Format	Color
Hex	BF AFB9
RGB	191, 175, 185
RGB Percent	75%, 69%, 73%
CMY	0.2515, 0.3142, 0.2750
CMYK	0.00, 0.08, 0.03, 0.25
HSL	323°, 11%, 72%
HSV	323°, 8%, 75%
XYZ	45.4989, 45.1644, 52.1443
YIQ	180.9240, 6.3260, 6.5020

Conversions

Conversions Part 2

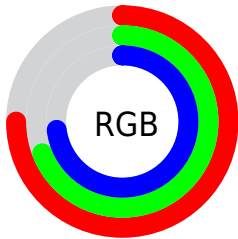
Format	Color
R_{YB}	191, 175, 185
Decimal	12562361
CIE Lab	73.00, 7.51, -3.03
CIE LCh	73, 8.099, 338.053
Yxy	45.1644, 0.3186, 0.3163
Android (android.graphics.Color)	4290752441 (0xFFBFAFB9)
YUV	180.9240, 2.0095, 8.8367
Hunter-Lab	67.2044, 3.2407, 1.0396

Details

The CIELCh color $73, 8.099, 338.053$ is a light color, and the websafe version is hex `CCCCCC`. A complement of this color would be $76, 8.042, 156.912$, and the grayscale version is $74, 0.009, 296.813$.

A 20% lighter version of the original color is $93, 7.705, 337.907$, and $53, 7.936, 339.395$ is the 20% darker color. If you saturate the color by 10%, you get $68, 17.898, 338.859$, and if you desaturate by 10%, it is $78, 1.539, 157.605$.

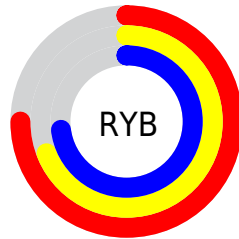
Distribution



Red (75%)

Green (69%)

Blue (73%)



Red (75%)

Yellow (69%)

Blue (73%)

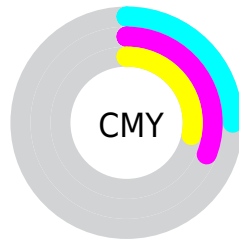


Cyan (0%)

Magenta (8%)

Yellow (3%)

Black (25%)



Cyan (25%)

Magenta (31%)

Yellow (28%)

Brightness & Saturation Gradients

These gradients show how the CIELCh color 73, 8.099, 338.053 changes by changing the brightness by 10 percent. The first figure shows a shift by +10% for each color and the second figure -10%.

Similar to the brightness gradients but the following saturation gradients show a change of the CIELCh color 73, 8.099, 338.053 by changing the saturation by 10% instead.

■ 73, 8.099, 338.053

■ 73, 8.099, 338.053

■ 100, 8.099,
338.053

■ 63, 8.099, 338.053

■ 93, 8.099, 338.053

■ 53, 8.099, 338.053

■ 43, 8.099, 338.053

■ 33, 8.099, 338.053

■ 23, 8.099, 338.053

■ 13, 8.099, 338.053

■ 3, 8.099, 338.053

■ 0, 8.099, 338.053

■ 73, 8.099, 338.053

■ 73, 8.099, 338.053

68, 17.898,
338.859

78, 1.539, 157.605

63, 27.732,
339.712

83, 10.935,
156.737

59, 37.394,
340.645

89, 20.052,
156.096

54, 46.583,
341.683

94, 28.877,
155.504

51, 54.898,
342.865

95, 28.541,
159.552

47, 61.863,
344.245

95, 26.197,
165.579

45, 67.004,
345.903

95, 24.158,
172.665

43, 69.996,
347.941

96, 22.513,
180.885

42, 70.977,

96, 21.357,
190.166

350.433

Harmonies

Complementary

The Complementary color scheme is a pair of colors which are on the opposite of each other on the color wheel.



73, 8.099, 338.053



76, 8.042, 156.912

Rectangle

The Rectangle color scheme consists of four colors that form a rectangle on the color wheel.



73, 8.099, 338.053



73, 8.099, 28.053



73, 8.099, 158.053



73, 8.099, 208.053

Sweetspot

The Sweet Spot groups the original color and five complimentary colors.



73, 8.097, 338.056



95, 3.563, 337.589



72, 9.001, 304.713



51, 2.724, 337.672



99, 0.012, 296.813



52, 0.007, 296.813

Same Dimension

The Same Dimension uses a secret algorithm to generate beautiful new colors.



73, 8.097, 338.056



91, 11.946, 338.198



73, 6.179, 9.106



37, 5.430, 338.133



34, 61.999, 350.418



3, 15.139, 344.194

Inverse Universe

The Inverse Universe completely reimagines the original color for something new.



73, 8.097, 338.056



91, 11.946, 338.198



76, 5.940, 187.865



37, 5.430, 338.133



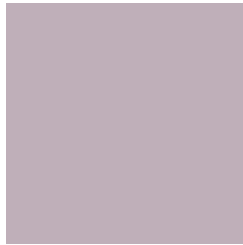
34, 61.999, 350.418



3, 15.139, 344.194

Previews

White Background



This preview shows how the CIELCh color 73, 8.099, 338.053 looks on a white background.

Color Contrast Check

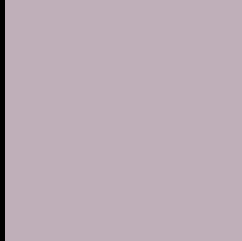
Large Text (above 18pt) WCAG AA × Fail

Any Text WCAG AA × Fail

Large Text (above 18pt) WCAG AAA × Fail

Any Text WCAG AAA × Fail

Black Background



This preview shows how the CIE LCh color 73, 8.099, 338.053 looks on a black background.

Color Contrast Check

Large Text (above 18pt) WCAG AA ✓ Pass

Any Text WCAG AA ✓ Pass

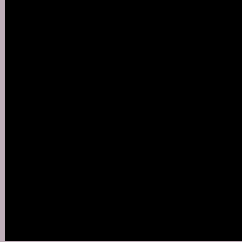
Large Text (above 18pt) WCAG AAA ✓ Pass

Any Text WCAG AAA ✓ Pass

If you want to check with other color combinations, try the [Color Contrast Checker](#).

CIELCh 73, 8.099, 338.053

Background



This preview shows how black text looks on a background with the CIELCh color 73, 8.099, 338.053.



This preview shows how white text looks on a background with the CIELCh color 73, 8.099, 338.053.

Color Blindness Simulation

Color vision deficiency is a very complex topic, and I could not describe the different causes any better than Wikipedia does, so if you want to learn more, you should check out their [article about color blindness](#).

Dichromacy



Original Color

73, 8.099, 338.053

Protanopia

73, 4.959, 299.159

Deuteranopia

73, 9.596, 341.831



Tritanopia
73, 9.918, 330.228

Trichromacy



Original Color
73, 8.099, 338.053

Protanomaly
73, 5.563, 318.315

Deuteranomaly
73, 9.306, 340.347

Tritanomaly
73, 9.512, 332.326

Monochromacy



Original Color
73, 8.099, 338.053

Achromatopsia
74, 0.009, 296.813

Achromatomaly
74, 2.785, 343.775

CSS Examples

Text

The CSS property to change the color of the text to CIELCh 73, 8.099, 338.053 is called "color". The color property can be set on classes, ids or directly on the HTML element.

This example shows how text in the color `rgb(191, 175, 185)` looks like.

```
.text, #text, p{  
    color:rgb(191, 175, 185)  
}
```

If you want to add a text shadow in that color use the text-shadow property, you can generate a text shadow directly with our [CSS Text Shadow Generator](#).

Here you see how black text with a 4 pixel rgb(191, 175, 185) colored shadow looks like.

```
.shadow{ text-shadow: 4px 4px 2px rgb(191, 175, 185) }
```

Border

The CSS property to change the border of an element to CIELCh 73, 8.099, 338.053 is called "border". The border property can be set on classes, ids or directly on the HTML element.

This example shows the color as border, it can be applied via the CSS property "border" or "border-color".

```
.border, #border, table{ border:4px solid rgb(191, 175, 185) }
```

If only the border color should be changed use the property `border-color`.

```
.border{ border-color:rgb(191, 175, 185) }
```

If you want to add a box shadow in that color use:

Here you see how a box with a 4 pixel `rgb(191, 175, 185)` colored shadow looks like.

```
.boxshadow{ -moz-box-shadow:4px 4px 4px  
4px rgb(191, 175, 185); -webkit-box-  
shadow:4px 4px 4px 4px rgb(191, 175, 185);  
box-shadow:4px 4px 4px 4px rgb(191, 175,  
185) }
```

Background

The CSS property to change the background color of an element to CIELCh 73, 8.099, 338.053 is called "background". The background property can be set on classes, ids or directly on the HTML element.

```
.background, #background, body{  
background: rgb(191, 175, 185) }
```

If only the background color should be changed can be used:

```
.background{ background-color: rgb(191,  
175, 185) }
```

This example shows the color as background, it is applied via the CSS property "background".

To optimize and compress your CSS code, you can use our [online CSS compressor and optimizer](#) based on csstidy. If you want to create a linear or radial gradient as background or border, check our [CSS Gradient Generator](#).

Hey! You found this booklet interesting? Support Converting Colors with the new Membership Option!

The pro membership hides all ads, plus gives you double the colors in the color bucket, and more awesome pro features!

[Learn more, Memberships starting at \\$2.50/m!](#)

**Follow me
on Twitter!**

@ConvertingColor