

Converting Colors

CIELCh(73, 8.594, 54.500)

Have a look what the booklet for
CIELCh(73, 8.594, 54.500) contains.

CIELCh(73, 8.517, 54.565)	3
<i>Conversions</i>	4
<i>Details</i>	6
<i>Harmonies</i>	11
<i>Previews</i>	20
<i>Color Blindness Simulation</i>	23
<i>CSS Examples</i>	26

Color

CIELCh(73, 8.517, 54.565)

Conversions

Conversions Part 1

Format	Color
Hex	C2B0A7
RGB	194, 176, 167
RGB Percent	76%, 69%, 65%
CMY	0.2402, 0.3108, 0.3461
CMYK	0.00, 0.09, 0.14, 0.24
HSL	20°, 18%, 71%
HSV	20°, 14%, 76%
XYZ	44.6065, 45.1644, 42.8018
YIQ	180.3560, 13.6170, 1.0170

Conversions

Conversions Part 2

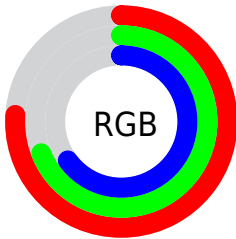
Format	Color
RYB	194, 181, 167
Decimal	12759207
CIELab	73.00, 4.94, 6.94
CIElCh	73, 8.517, 54.565
Yxy	45.1644, 0.3365, 0.3407
Android (android.graphics.Color)	4290949287 (0xFFC2B0A7)
YUV	180.3560, -6.5845, 11.9658
Hunter-Lab	67.2044, 0.8704, 9.2820

Details

The CIELCh color $73, 8.517, 54.565$ is a light color, and the websafe version is hex `CCCCCC`. A complement of this color would be $74, 7.933, 237.070$, and the grayscale version is $73, 0.009, 296.813$.

A 20% lighter version of the original color is $93, 8.647, 56.094$, and $53, 8.480, 57.444$ is the 20% darker color. If you saturate the color by 10%, you get $69, 15.170, 53.882$, and if you desaturate by 10%, it is $77, 2.318, 55.201$.

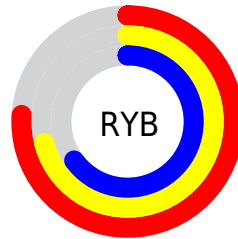
Distribution



Red (76%)

Green (69%)

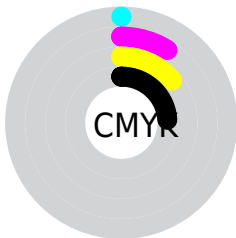
Blue (65%)



Red (76%)

Yellow (71%)

Blue (65%)

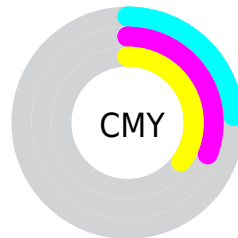


Cyan (0%)

Magenta (9%)

Yellow (14%)

Black (24%)



Cyan (24%)

Magenta (31%)

Yellow (35%)

Brightness & Saturation Gradients

These gradients show how the CIELCh color 73, 8.517, 54.565 changes by changing the brightness by 10 percent. The first figure shows a shift by +10% for each color and the second figure -10%.

Similar to the brightness gradients but the following saturation gradients show a change of the CIELCh color 73, 8.517, 54.565 by changing the saturation by 10% instead.

 73, 8.517, 54.565  73, 8.517, 54.565

 100, 8.517, 54.565  63, 8.517, 54.565

 93, 8.517, 54.565  53, 8.517, 54.565


 43, 8.517, 54.565

 33, 8.517, 54.565

 23, 8.517, 54.565

 13, 8.517, 54.565

 3, 8.517, 54.565

 0, 8.517, 54.565

 73, 8.517, 54.565  73, 8.517, 54.565

69, 15.170, 53.882

77, 2.318, 55.201

66, 22.319, 53.233

81, 3.471, 236.343

62, 29.988, 52.662

85, 8.896, 237.074

59, 38.171, 52.179

89, 14.001,
237.873

55, 46.797, 51.778

92, 16.737,
225.700

52, 55.665, 51.397

50, 64.296, 50.864

96, 19.403,
200.937

47, 71.716, 49.786

96, 19.992,
198.188

46, 75.595, 49.018

Harmonies

Complementary

The Complementary color scheme is a pair of colors which are on the opposite of each other on the color wheel.



73, 8.517, 54.565



74, 7.933, 237.070

Rectangle

The Rectangle color scheme consists of four colors that form a rectangle on the color wheel.



73, 8.517, 54.565



73, 8.517, 104.565



73, 8.517, 234.565



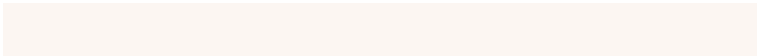
73, 8.517, 284.565

Sweetspot

The Sweet Spot groups the original color and five complimentary colors.



73, 8.517, 54.581



97, 2.925, 55.198



71, 14.098, 336.632



52, 2.102, 55.170



0, 0.000, 0.000



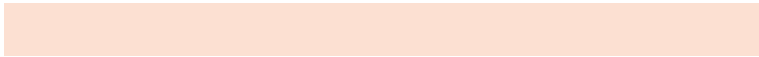
53, 0.007, 296.813

Same Dimension

The Same Dimension uses a secret algorithm to generate beautiful new colors.



73, 8.517, 54.581



91, 13.040, 54.345



77, 12.149, 100.789



39, 3.410, 54.899



38, 65.468, 49.518



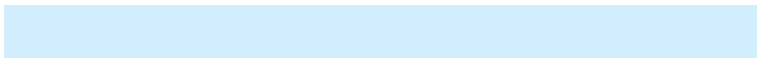
5, 11.749, 41.759

Inverse Universe

The Inverse Universe completely reimagines the original color for something new.



74, 7.933, 237.070



93, 11.919, 237.433



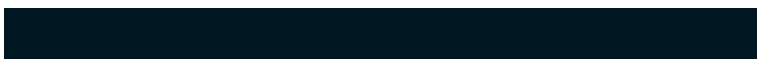
70, 12.380, 284.015



39, 3.257, 236.629



43, 36.458, 261.498



6, 10.827, 250.396

Previews

White Background



This preview shows how the CIELCh color 73, 8.517, 54.565 looks on a white background.

Color Contrast Check

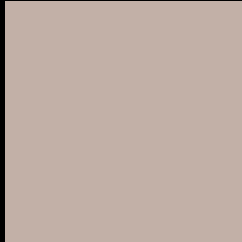
Large Text (above 18pt) WCAG AA × Fail

Any Text WCAG AA × Fail

Large Text (above 18pt) WCAG AAA × Fail

Any Text WCAG AAA × Fail

Black Background



This preview shows how the CIELCh color 73, 8.517, 54.565 looks on a black background.

Color Contrast Check

Large Text (above 18pt) WCAG AA ✓ Pass

Any Text WCAG AA ✓ Pass

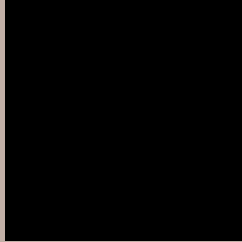
Large Text (above 18pt) WCAG AAA ✓ Pass

Any Text WCAG AAA ✓ Pass

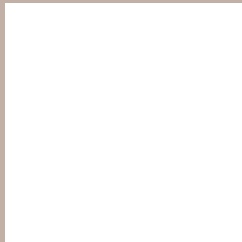
If you want to check with other color combinations, try the [Color Contrast Checker](#).

CIELCh 73, 8.517, 54.565

Background



This preview shows how black text looks on a background with the CIELCh color 73, 8.517, 54.565.



This preview shows how white text looks on a background with the CIELCh color 73, 8.517, 54.565.

Color Blindness Simulation

Color vision deficiency is a very complex topic, and I could not describe the different causes any better than Wikipedia does, so if you want to learn more, you should check out their [article about color blindness](#).

Dichromacy



Original Color

73, 8.517, 54.565

Protanopia

73, 6.363, 88.351

Deuteranopia

73, 11.417, 36.671



Tritanopia
73, 11.147, 341.187

Trichromacy



Original Color
73, 8.517, 54.565

Protanomaly
73, 6.626, 74.083

Deuteranomaly
73, 10.096, 42.014

Tritanomaly
73, 8.414, 1.362

Monochromacy



Original Color
73, 8.517, 54.565

Achromatopsia
73, 0.009, 296.813

Achromatomaly
73, 3.093, 51.053

CSS Examples

Text

The CSS property to change the color of the text to CIELCh 73, 8.517, 54.565 is called "color". The color property can be set on classes, ids or directly on the HTML element.

This example shows how text in the color `rgb(194, 176, 167)` looks like.

```
.text, #text, p{  
    color:rgb(194, 176, 167)  
}
```

If you want to add a text shadow in that color use the text-shadow property, you can generate a text shadow directly with our [CSS Text Shadow Generator](#).

Here you see how black text with a 4 pixel rgb(194, 176, 167) colored shadow looks like.

```
.shadow{ text-shadow: 4px 4px 2px rgb(194, 176, 167) }
```

Border

The CSS property to change the border of an element to CIELCh 73, 8.517, 54.565 is called "border". The border property can be set on classes, ids or directly on the HTML element.

This example shows the color as border, it can be applied via the CSS property "border" or "border-color".

```
.border, #border, table{ border:4px solid rgb(194, 176, 167) }
```

If only the border color should be changed use the property border-color.

```
.border{ border-color:rgb(194, 176, 167) }
```

If you want to add a box shadow in that color use:

Here you see how a box with a 4 pixel rgb(194, 176, 167) colored shadow looks like.

```
.boxshadow{ -moz-box-shadow:4px 4px 4px  
4px rgb(194, 176, 167); -webkit-box-  
shadow:4px 4px 4px 4px rgb(194, 176, 167);  
box-shadow:4px 4px 4px 4px rgb(194, 176,  
167) }
```

Background

The CSS property to change the background color of an element to CIELCh 73, 8.517, 54.565 is called "background". The background property can be set on classes, ids or directly on the HTML element.

```
.background, #background, body{  
background: rgb(194, 176, 167) }
```

If only the background color should be changed can be used:

```
.background{ background-color: rgb(194,  
176, 167) }
```

This example shows the color as background, it is applied via the CSS property "background".

To optimize and compress your CSS code, you can use our [online CSS compressor and optimizer](#) based on csstidy. If you want to create a linear or radial gradient as background or border, check our [CSS Gradient Generator](#).

Hey! You found this booklet interesting? Support Converting Colors with the new Membership Option!

The pro membership hides all ads, plus gives you double the colors in the color bucket, and more awesome pro features!

[Learn more, Memberships starting at \\$2.50/m!](#)

**Follow me
on Twitter!**

@ConvertingColor