

Converting Colors

CIELCh(73, 8.609, 330.979)

Have a look what the booklet for
CIELCh(73, 8.609, 330.979) contains.

CIELCh(73, 8.609, 330.979)	3
<i>Conversions</i>	4
<i>Details</i>	6
<i>Harmonies</i>	12
<i>Previews</i>	21
<i>Color Blindness Simulation</i>	24
<i>CSS Examples</i>	27

Color

CIELCh(73, 8.609, 330.979)

Conversions

Conversions Part 1

Format	Color
Hex	BEAFBB
RGB	190, 175, 187
RGB Percent	75%, 69%, 73%
CMY	0.2551, 0.3139, 0.2669
CMYK	0.00, 0.08, 0.02, 0.26
HSL	312°, 10%, 72%
HSV	312°, 8%, 74%
XYZ	45.5045, 45.1644, 53.3020
YIQ	180.8530, 5.0880, 6.9120

Conversions

Conversions Part 2

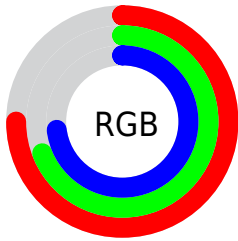
Format	Color
R_YB	190, 175, 187
Decimal	12496827
CIE Lab	73.00, 7.53, -4.18
CIE LCh	73, 8.609, 330.979
Yxy	45.1644, 0.3161, 0.3137
Android (android.graphics.Color)	4290686907 (0xFFBEAFBB)
YUV	180.8530, 3.0305, 8.0219
Hunter-Lab	67.2044, 3.2555, 0.0183

Details

The CIELCh color $73, 8.609, 330.979$ is a light color, and the websafe version is hex `CCCCCC`. A complement of this color would be $76, 8.580, 150.060$, and the grayscale version is $74, 0.009, 296.813$.

A 20% lighter version of the original color is $93, 8.192, 330.864$, and $53, 8.459, 331.626$ is the 20% darker color. If you saturate the color by 10%, you get $68, 19.617, 331.635$, and if you desaturate by 10%, it is $78, 2.264, 150.536$.

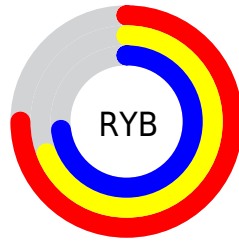
Distribution



Red (75%)

Green (69%)

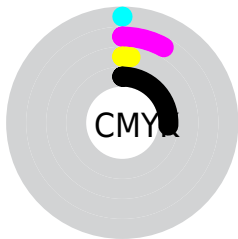
Blue (73%)



Red (75%)

Yellow (69%)

Blue (73%)

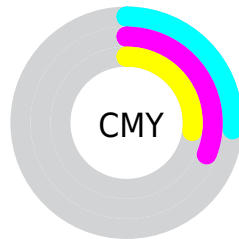


Cyan (0%)

Magenta (8%)

Yellow (2%)

Black (26%)



Cyan (26%)

Magenta (31%)

Yellow (27%)

Brightness & Saturation Gradients

These gradients show how the CIELCh color 73, 8.609, 330.979 changes by changing the brightness by 10 percent. The first figure shows a shift by +10% for each color and the second figure -10%.

Similar to the brightness gradients but the following saturation gradients show a change of the CIELCh color 73, 8.609, 330.979 by changing the saturation by 10% instead.

■ 73, 8.609, 330.979

■ 73, 8.609, 330.979

■ 100, 8.609,
330.979

■ 63, 8.609, 330.979

■ 93, 8.609, 330.979

■ 53, 8.609, 330.979

■ 43, 8.609, 330.979

■ 33, 8.609, 330.979

■ 23, 8.609, 330.979

■ 13, 8.609, 330.979

■ 3, 8.609, 330.979

■ 0, 8.609, 330.979

■ 73, 8.609, 330.979

■ 73, 8.609, 330.979

68, 19.617,
331.635

78, 2.264, 150.536

63, 30.613,
332.298

83, 12.903,
149.845

59, 41.366,
332.981

88, 23.257,
149.279

55, 51.550,
333.686

94, 33.305,
148.748

51, 60.748,
334.417

95, 34.233,
150.240

48, 68.475,
335.186

95, 32.757,
152.436

46, 74.260,
336.012

95, 31.324,
154.824

44, 77.775,
336.926

95, 29.939,
157.427

43, 79.099,

95, 28.611,
160.266

337.958

Harmonies

Complementary

The Complementary color scheme is a pair of colors which are on the opposite of each other on the color wheel.



73, 8.609, 330.979



76, 8.580, 150.060

Rectangle

The Rectangle color scheme consists of four colors that form a rectangle on the color wheel.



73, 8.609, 330.979



73, 8.609, 20.979



73, 8.609, 150.979



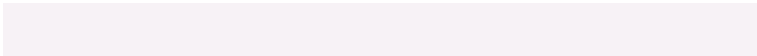
73, 8.609, 200.979

Sweetspot

The Sweet Spot groups the original color and five complimentary colors.



73, 8.607, 330.980



96, 2.695, 330.520



72, 8.262, 298.544



52, 1.545, 330.507



99, 0.012, 296.813



52, 0.007, 296.813

Same Dimension

The Same Dimension uses a secret algorithm to generate beautiful new colors.



73, 8.607, 330.980



92, 12.169, 331.063



73, 6.172, 356.624



37, 6.152, 331.077



36, 69.352, 338.016



3, 17.625, 334.210

Inverse Universe

The Inverse Universe completely reimagines the original color for something new.



73, 8.607, 330.980



92, 12.169, 331.063



76, 6.032, 175.318



37, 6.152, 331.077



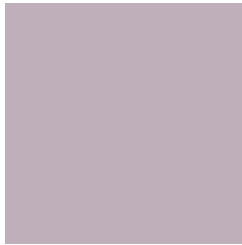
36, 69.352, 338.016



3, 17.625, 334.210

Previews

White Background



This preview shows how the CIELCh color 73, 8.609, 330.979 looks on a white background.

Color Contrast Check

Large Text (above 18pt) WCAG AA × Fail

Any Text WCAG AA × Fail

Large Text (above 18pt) WCAG AAA × Fail

Any Text WCAG AAA × Fail

Black Background



This preview shows how the CIE LCh color 73, 8.609, 330.979 looks on a black background.

Color Contrast Check

Large Text (above 18pt) WCAG AA ✓ Pass

Any Text WCAG AA ✓ Pass

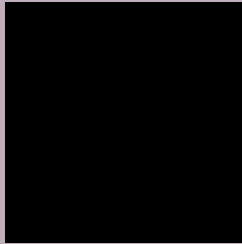
Large Text (above 18pt) WCAG AAA ✓ Pass

Any Text WCAG AAA ✓ Pass

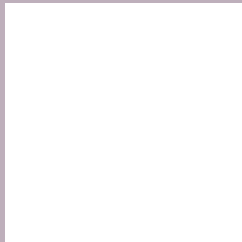
If you want to check with other color combinations, try the [Color Contrast Checker](#).

CIELCh 73, 8.609, 330.979

Background



This preview shows how black text looks on a background with the CIELCh color 73, 8.609, 330.979.



This preview shows how white text looks on a background with the CIELCh color 73, 8.609, 330.979.

Color Blindness Simulation

Color vision deficiency is a very complex topic, and I could not describe the different causes any better than Wikipedia does, so if you want to learn more, you should check out their [article about color blindness](#).

Dichromacy



Original Color

73, 8.609, 330.979

Protanopia

73, 6.035, 297.705

Deuteranopia

73, 10.025, 335.577



Tritanopia
73, 9.025, 328.737

Trichromacy



Original Color
73, 8.609, 330.979

Protanomaly
73, 6.541, 313.900

Deuteranomaly
73, 9.765, 333.992

Tritanomaly
73, 9.025, 328.737

Monochromacy



Original Color
73, 8.609, 330.979

Achromatopsia
74, 0.009, 296.813

Achromatomaly
73, 2.879, 330.594

CSS Examples

Text

The CSS property to change the color of the text to CIELCh 73, 8.609, 330.979 is called "color". The color property can be set on classes, ids or directly on the HTML element.

This example shows how text in the color `rgb(190, 175, 187)` looks like.

```
.text, #text, p{  
    color:rgb(190, 175, 187)  
}
```

If you want to add a text shadow in that color use the text-shadow property, you can generate a text shadow directly with our [CSS Text Shadow Generator](#).

Here you see how black text with a 4 pixel rgb(190, 175, 187) colored shadow looks like.

```
.shadow{ text-shadow: 4px 4px 2px rgb(190, 175, 187) }
```

Border

The CSS property to change the border of an element to CIELCh 73, 8.609, 330.979 is called "border". The border property can be set on classes, ids or directly on the HTML element.

This example shows the color as border, it can be applied via the CSS property "border" or "border-color".

```
.border, #border, table{ border:4px solid rgb(190, 175, 187) }
```

If only the border color should be changed use the property `border-color`.

```
.border{ border-color:rgb(190, 175, 187) }
```

If you want to add a box shadow in that color use:

Here you see how a box with a 4 pixel `rgb(190, 175, 187)` colored shadow looks like.

```
.boxshadow{ -moz-box-shadow:4px 4px 4px  
4px rgb(190, 175, 187); -webkit-box-  
shadow:4px 4px 4px 4px rgb(190, 175, 187);  
box-shadow:4px 4px 4px 4px rgb(190, 175,  
187) }
```

Background

The CSS property to change the background color of an element to CIELCh 73, 8.609, 330.979 is called "background". The background property can be set on classes, ids or directly on the HTML element.

```
.background, #background, body{  
background: rgb(190, 175, 187) }
```

If only the background color should be changed can be used:

```
.background{ background-color: rgb(190,  
175, 187) }
```

This example shows the color as background, it is applied via the CSS property "background".

To optimize and compress your CSS code, you can use our [online CSS compressor and optimizer](#) based on csstidy. If you want to create a linear or radial gradient as background or border, check our [CSS Gradient Generator](#).

Hey! You found this booklet interesting? Support Converting Colors with the new Membership Option!

The pro membership hides all ads, plus gives you double the colors in the color bucket, and more awesome pro features!

[Learn more, Memberships starting at \\$2.50/m!](#)

**Follow me
on Twitter!**

@ConvertingColor