

Converting Colors

CIELCh(73, 87.895, 24.071)

Have a look what the booklet for
CIELCh(73, 87.895, 24.071) contains.

CIELCh(63, 64.486, 18.466)	3
<i>Conversions</i>	4
<i>Details</i>	6
<i>Harmonies</i>	11
<i>Previews</i>	20
<i>Color Blindness Simulation</i>	23
<i>CSS Examples</i>	26

Color

CIELCh(63, 64.486, 18.466)

Conversions

Conversions Part 1

Format	Color
Hex	FF6378
RGB	255, 99, 120
RGB Percent	100%, 39%, 47%
CMY	0.0000, 0.6132, 0.5312
CMYK	0.00, 0.61, 0.53, 0.00
HSL	352°, 100%, 69%
HSV	352°, 61%, 100%
XYZ	49.2809, 31.5869, 21.1245
YIQ	148.0380, 86.2350, 39.6030

Conversions

Conversions Part 2

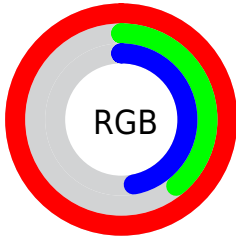
Format	Color
R _Y B	255, 99, 120
Decimal	16737144
CIE Lab	63.00, 61.17, 20.43
CIE LCh	63, 64.486, 18.466
Yxy	31.5869, 0.4832, 0.3097
Android (android.graphics.Color)	4294927224 (0xFFFF6378)
YUV	148.0380, -13.8227, 93.8057
Hunter-Lab	56.2022, 58.1637, 17.0564

Details

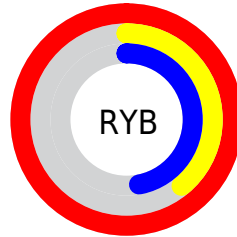
The CIELCh color **63, 64.486, 18.466** is a light color, and the websafe version is hex **FF6666**. A complement of this color would be **92, 45.914, 182.815**, and the grayscale version is **61, 0.008, 296.813**.

A 20% lighter version of the original color is **75, 39.478, 10.982**, and **43, 64.104, 18.293** is the 20% darker color. If you saturate the color by 10%, you get **59, 74.540, 21.815**, and if you desaturate by 10%, it is **68, 53.311, 15.685**.

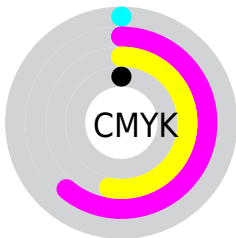
Distribution



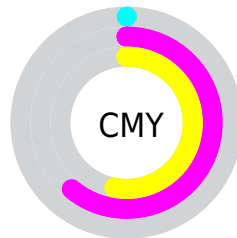
- Red (100%)
- Green (39%)
- Blue (47%)



- Red (100%)
- Yellow (39%)
- Blue (47%)



- Cyan (0%)
- Magenta (61%)
- Yellow (53%)
- Black (0%)



- Cyan (0%)
- Magenta (61%)
- Yellow (53%)


Brightness & Saturation Gradients

These gradients show how the CIELCh color 63, 64.486, 18.466 changes by changing the brightness by 10 percent. The first figure shows a shift by +10% for each color and the second figure -10%.

Similar to the brightness gradients but the following saturation gradients show a change of the CIELCh color 63, 64.486, 18.466 by changing the saturation by 10% instead.

 63, 64.486, 18.466

 63, 64.486, 18.466

 100, 64.486,
18.466

 53, 64.486, 18.466

 83, 64.486, 18.466

 43, 64.486, 18.466

 93, 64.486, 18.466

 33, 64.486, 18.466

 23, 64.486, 18.466

 13, 64.486, 18.466

 3, 64.486, 18.466

 0, 64.486, 18.466

 63, 64.486, 18.466

 63, 64.486, 18.466

 59, 74.540, 21.815

 68, 53.311, 15.685

■ 56, 83.914, 26.025

■ 73, 42.207, 13.561

■ 54, 92.118, 30.848

■ 79, 31.256, 11.878

■ 53, 98.163, 34.956

■ 86, 20.697, 10.522

■ 92, 10.664, 9.394

■ 99, 1.210, 8.016

100, 0.012,
296.813

Harmonies

Complementary

The Complementary color scheme is a pair of colors which are on the opposite of each other on the color wheel.



63, 64.486, 18.466



92, 45.914, 182.815

Rectangle

The Rectangle color scheme consists of four colors that form a rectangle on the color wheel.



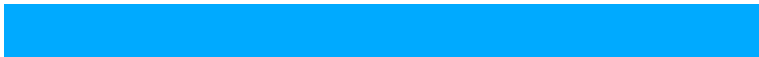
63, 64.486, 18.466



63, 64.486, 68.466



63, 64.486, 198.466



63, 64.486, 248.466

Sweetspot

The Sweet Spot groups the original color and five complimentary colors.



63, 64.223, 18.390



88, 17.302, 10.127



64, 90.543, 322.810



45, 12.127, 10.472



0, 0.000, 0.000



53, 0.007, 296.813

Same Dimension

The Same Dimension uses a secret algorithm to generate beautiful new colors.



63, 64.223, 18.390



58, 77.154, 22.867



73, 55.540, 53.344



50, 5.325, 9.204



40, 78.307, 34.084



10, 32.380, 21.704

Inverse Universe

The Inverse Universe completely reimagines the original color for something new.



63, 64.223, 18.390



58, 77.154, 22.867



77, 38.304, 248.869



50, 5.325, 9.204



40, 78.307, 34.084



10, 32.380, 21.704

Previews

White Background



This preview shows how the CIELCh color 63, 64.486, 18.466 looks on a white background.

Color Contrast Check

Large Text (above 18pt) WCAG AA × Fail

Any Text WCAG AA × Fail

Large Text (above 18pt) WCAG AAA × Fail

Any Text WCAG AAA × Fail

Black Background



This preview shows how the CIELCh color 63, 64.486, 18.466 looks on a black background.

Color Contrast Check

Large Text (above 18pt) WCAG AA ✓ Pass

Any Text WCAG AA ✓ Pass

Large Text (above 18pt) WCAG AAA ✓ Pass

Any Text WCAG AAA ✓ Pass

If you want to check with other color combinations, try the [Color Contrast Checker](#).

CIELCh 63, 64.486, 18.466

Background



This preview shows how black text looks on a background with the CIELCh color 63, 64.486, 18.466.

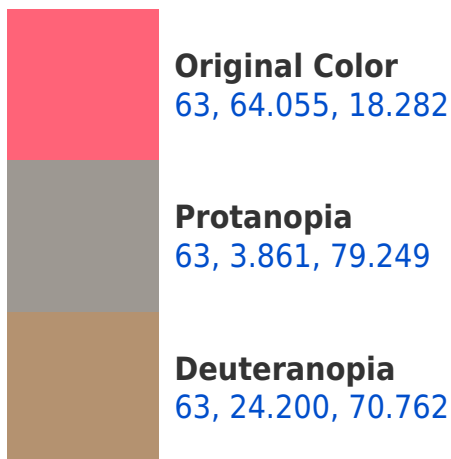


This preview shows how white text looks on a background with the CIELCh color 63, 64.486, 18.466.

Color Blindness Simulation

Color vision deficiency is a very complex topic, and I could not describe the different causes any better than Wikipedia does, so if you want to learn more, you should check out their [article about color blindness](#).

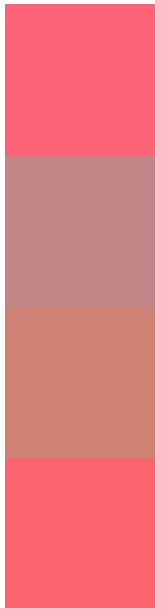
Dichromacy





Tritanopia
63, 64.757, 25.014

Trichromacy



Original Color
63, 64.055, 18.282

Protanomaly
62, 24.710, 18.210

Deuteranomaly
62, 35.015, 35.392

Tritanomaly
63, 64.295, 22.341

Monochromacy



Original Color
63, 64.055, 18.282

Achromatopsia
61, 0.008, 296.813

Achromatomaly
60, 23.571, 11.165

CSS Examples

Text

The CSS property to change the color of the text to CIELCh 63, 64.486, 18.466 is called "color". The color property can be set on classes, ids or directly on the HTML element.

This example shows how text in the color `rgb(255, 99, 120)` looks like.

```
.text, #text, p{  
    color:rgb(255, 99, 120)  
}
```

If you want to add a text shadow in that color use the text-shadow property, you can generate a text shadow directly with our [CSS Text Shadow Generator](#).

Here you see how black text with a 4 pixel rgb(255, 99, 120) colored shadow looks like.

```
.shadow{ text-shadow: 4px 4px 2px rgb(255, 99, 120) }
```

Border

The CSS property to change the border of an element to CIELCh 63, 64.486, 18.466 is called "border". The border property can be set on classes, ids or directly on the HTML element.

This example shows the color as border, it can be applied via the CSS property "border" or "border-color".

```
.border, #border, table{ border:4px solid rgb(255, 99, 120) }
```

If only the border color should be changed use the property border-color.

```
.border{ border-color:rgb(255, 99, 120) }
```

If you want to add a box shadow in that color use:

Here you see how a box with a 4 pixel rgb(255, 99, 120) colored shadow looks like.

```
.boxshadow{ -moz-box-shadow:4px 4px 4px  
4px rgb(255, 99, 120); -webkit-box-  
shadow:4px 4px 4px 4px rgb(255, 99, 120);  
box-shadow:4px 4px 4px 4px rgb(255, 99,  
120) }
```

Background

The CSS property to change the background color of an element to CIELCh 63, 64.486, 18.466 is called "background". The background property can be set on classes, ids or directly on the HTML element.

```
.background, #background, body{  
background: rgb(255, 99, 120) }
```

If only the background color should be changed can be used:

```
.background{ background-color: rgb(255, 99,  
120) }
```

This example shows the color as background, it is applied via the CSS property "background".

To optimize and compress your CSS code, you can use our [online CSS compressor and optimizer](#) based on csstidy. If you want to create a linear or radial gradient as background or border, check our [CSS Gradient Generator](#).

Hey! You found this booklet interesting? Support Converting Colors with the new Membership Option!

The pro membership hides all ads, plus gives you double the colors in the color bucket, and more awesome pro features!

[Learn more, Memberships starting at \\$2.50/m!](#)

**Follow me
on Twitter!**

@ConvertingColor