

# Converting Colors

CIELCh(73, 9.422, 3.574)

Have a look what the booklet for  
CIELCh(73, 9.422, 3.574) contains.

<b>CIELCh(73, 9.524, 3.729)</b> .....	3
<i><b>Conversions</b></i> .....	4
<i><b>Details</b></i> .....	6
<i><b>Harmonies</b></i> .....	11
<i><b>Previews</b></i> .....	20
<i><b>Color Blindness Simulation</b></i> .....	23
<i><b>CSS Examples</b></i> .....	26

# Color

**CIELCh(73, 9.524, 3.729)**

# Conversions

## Conversions Part 1

Format	Color
Hex	C5ADB2
RGB	197, 173, 178
RGB Percent	77%, 68%, 70%
CMY	0.2261, 0.3202, 0.3006
CMYK	0.00, 0.12, 0.10, 0.23
HSL	348°, 17%, 73%
HSV	348°, 12%, 77%
XYZ	46.1975, 45.1644, 48.5832
YIQ	180.7460, 12.6990, 6.6430

# Conversions

## Conversions Part 2

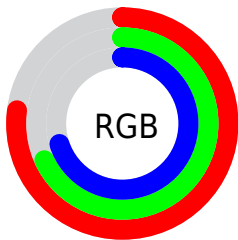
Format	Color
R <sub>Y</sub> B	197, 173, 178
Decimal	12955058
CIE Lab	73.00, 9.50, 0.62
CIE LCh	73, 9.524, 3.729
Yxy	45.1644, 0.3301, 0.3227
Android (android.graphics.Color)	4291145138 (0xFFC5ADB2)
YUV	180.7460, -1.3538, 14.2548
Hunter-Lab	67.2044, 5.0963, 4.1814

# Details

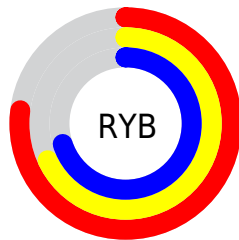
The CIELCh color  $73, 9.524, 3.729$  is a light color, and the websafe version is hex `CC9999`. A complement of this color would be  $78, 9.088, 181.592$ , and the grayscale version is  $74, 0.009, 296.813$ .

A 20% lighter version of the original color is  $93, 9.875, 1.862$ , and  $53, 9.253, 6.050$  is the 20% darker color. If you saturate the color by 10%, you get  $68, 17.780, 4.902$ , and if you desaturate by 10%, it is  $78, 1.653, 2.517$ .

# Distribution



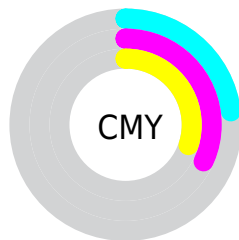
- Red (77%)
- Green (68%)
- Blue (70%)



- Red (77%)
- Yellow (68%)
- Blue (70%)



- Cyan (0%)
- Magenta (12%)
- Yellow (10%)
- Black (23%)



- Cyan (23%)
- Magenta (32%)
- Yellow (30%)

# Brightness & Saturation Gradients

These gradients show how the CIELCh color 73, 9.524, 3.729 changes by changing the brightness by 10 percent. The first figure shows a shift by +10% for each color and the second figure -10%.

Similar to the brightness gradients but the following saturation gradients show a change of the CIELCh color 73, 9.524, 3.729 by changing the saturation by 10% instead.



 73, 9.524, 3.729

 73, 9.524, 3.729

 100, 9.524, 3.729

 63, 9.524, 3.729

 93, 9.524, 3.729

 53, 9.524, 3.729

 43, 9.524, 3.729

 33, 9.524, 3.729

 23, 9.524, 3.729

 13, 9.524, 3.729

 3, 9.524, 3.729

 0, 9.524, 3.729

 73, 9.524, 3.729

 73, 9.524, 3.729

68, 17.780, 4.902

78, 1.653, 2.517

63, 26.358, 6.276

84, 5.807, 182.071

58, 35.121, 7.948

90, 12.864,  
181.291

53, 43.849, 10.024

95, 19.541,  
180.628

49, 52.233, 12.638

46, 59.930, 15.947

96, 18.906,  
198.256

44, 66.663, 20.076

42, 72.363, 25.020

41, 76.395, 29.104

# Harmonies

# Complementary

The Complementary color scheme is a pair of colors which are on the opposite of each other on the color wheel.



73, 9.524, 3.729



78, 9.088, 181.592

# Rectangle

The Rectangle color scheme consists of four colors that form a rectangle on the color wheel.



73, 9.524, 3.729



73, 9.524, 53.729



73, 9.524, 183.729



73, 9.524, 233.729

# Sweetspot

The Sweet Spot groups the original color and five complimentary colors.



73, 9.522, 3.737



97, 3.777, 2.833



73, 14.792, 318.826



51, 2.689, 2.929



0, 0.000, 0.000



53, 0.007, 296.813



# Same Dimension

The Same Dimension uses a secret algorithm to generate beautiful new colors.



73, 9.522, 3.737



90, 14.570, 4.077



75, 7.553, 48.741



39, 4.436, 3.437



34, 65.886, 28.265



3, 16.205, 8.746





# Inverse Universe

The Inverse Universe completely reimagines the original color for something new.



73, 9.522, 3.737



90, 14.570, 4.077



76, 7.052, 230.418



39, 4.436, 3.437



34, 65.886, 28.265

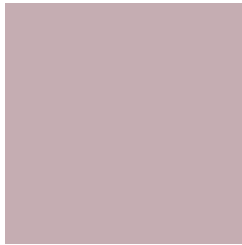


3, 16.205, 8.746



# Previews

## White Background



This preview shows how the CIELCh color 73, 9.524, 3.729 looks on a white background.

## Color Contrast Check

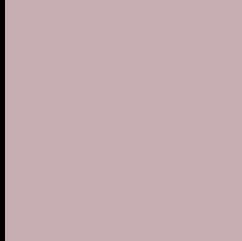
Large Text (above 18pt) WCAG AA × Fail

Any Text WCAG AA × Fail

Large Text (above 18pt) WCAG AAA × Fail

Any Text WCAG AAA × Fail

# Black Background



This preview shows how the CIELCh color 73, 9.524, 3.729 looks on a black background.

## Color Contrast Check

Large Text (above 18pt) WCAG AA ✓ Pass

Any Text WCAG AA ✓ Pass

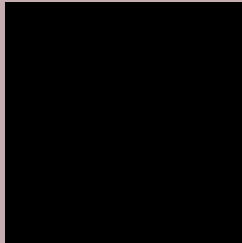
Large Text (above 18pt) WCAG AAA ✓ Pass

Any Text WCAG AAA ✓ Pass

If you want to check with other color combinations, try the [Color Contrast Checker](#).

# CIELCh 73, 9.524, 3.729

## Background



This preview shows how black text looks on a background with the CIELCh color 73, 9.524, 3.729.



This preview shows how white text looks on a background with the CIELCh color 73, 9.524, 3.729.

# Color Blindness Simulation

Color vision deficiency is a very complex topic, and I could not describe the different causes any better than Wikipedia does, so if you want to learn more, you should check out their [article about color blindness](#).

## Dichromacy



### Original Color

73, 9.524, 3.729

### Protanopia

73, 2.227, 332.344

### Deuteranopia

73, 9.015, 6.292



**Tritanopia**  
73, 12.366, 342.674



# Trichromacy



## Original Color

73, 9.524, 3.729

## Protanomaly

73, 5.022, 354.189

## Deuteranomaly

73, 9.015, 6.292

## Tritanomaly

73, 11.480, 349.170

# Monochromacy



## Original Color

73, 9.524, 3.729

## Achromatopsia

74, 0.009, 296.813

## Achromatomaly

73, 3.559, 1.874

# CSS Examples

## Text

The CSS property to change the color of the text to CIELCh 73, 9.524, 3.729 is called "color". The color property can be set on classes, ids or directly on the HTML element.

This example shows how text in the color `rgb(197, 173, 178)` looks like.

```
.text, #text, p{  
    color:rgb(197, 173, 178)  
}
```

If you want to add a text shadow in that color use the text-shadow property, you can generate a text shadow directly with our [CSS Text Shadow Generator](#).

Here you see how black text with a 4 pixel rgb(197, 173, 178) colored shadow looks like.

```
.shadow{ text-shadow: 4px 4px 2px rgb(197, 173, 178) }
```

## Border

The CSS property to change the border of an element to CIELCh 73, 9.524, 3.729 is called "border". The border property can be set on classes, ids or directly on the HTML element.

This example shows the color as border, it can be applied via the CSS property "border" or "border-color".

```
.border, #border, table{ border:4px solid rgb(197, 173, 178) }
```

If only the border color should be changed use the property `border-color`.

```
.border{ border-color:rgb(197, 173, 178) }
```

If you want to add a box shadow in that color use:

Here you see how a box with a 4 pixel `rgb(197, 173, 178)` colored shadow looks like.

```
.boxshadow{ -moz-box-shadow:4px 4px 4px  
4px rgb(197, 173, 178); -webkit-box-  
shadow:4px 4px 4px 4px rgb(197, 173, 178);  
box-shadow:4px 4px 4px 4px rgb(197, 173,  
178) }
```

# Background

The CSS property to change the background color of an element to CIELCh 73, 9.524, 3.729 is called "background". The background property can be set on classes, ids or directly on the HTML element.

```
.background, #background, body{  
background: rgb(197, 173, 178) }
```

If only the background color should be changed can be used:

```
.background{ background-color: rgb(197,  
173, 178) }
```

This example shows the color as background, it is applied via the CSS property "background".

To optimize and compress your CSS code, you can use our [online CSS compressor and optimizer](#) based on csstidy. If you want to create a linear or radial gradient as background or border, check our [CSS Gradient Generator](#).

Hey! You found this booklet interesting? Support Converting Colors with the new Membership Option!

The pro membership hides all ads, plus gives you double the colors in the color bucket, and more awesome pro features!

**[Learn more, Memberships starting at \\$2.50/m!](#)**

**Follow me  
on Twitter!**

@ConvertingColor