

Converting Colors

CIELCh(73, 9.480, 44.766)

Have a look what the booklet for
CIELCh(73, 9.480, 44.766) contains.

CIELCh(73, 9.602, 46.664)	3
<i>Conversions</i>	4
<i>Details</i>	6
<i>Harmonies</i>	11
<i>Previews</i>	20
<i>Color Blindness Simulation</i>	23
<i>CSS Examples</i>	26

Color

CIELCh(73, 9.602, 46.664)

Conversions

Conversions Part 1

Format	Color
Hex	C5AFA7
RGB	197, 175, 167
RGB Percent	77%, 69%, 65%
CMY	0.2286, 0.3148, 0.3462
CMYK	0.00, 0.11, 0.15, 0.23
HSL	16°, 20%, 71%
HSV	16°, 15%, 77%
XYZ	45.1778, 45.1644, 42.7628
YIQ	180.6660, 15.6800, 2.1760

Conversions

Conversions Part 2

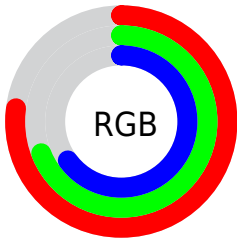
Format	Color
RYB	197, 178, 167
Decimal	12955559
CIELab	73.00, 6.59, 6.98
CIELCh	73, 9.602, 46.664
Yxy	45.1644, 0.3394, 0.3393
Android (android.graphics.Color)	4291145639 (0xFFC5AFA7)
YUV	180.6660, -6.7373, 14.3249
Hunter-Lab	67.2044, 2.3877, 9.3164

Details

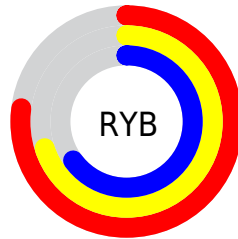
The CIELCh color $73, 9.602, 46.664$ is a light color, and the websafe version is hex `CCCCCC`. A complement of this color would be $75, 8.773, 228.515$, and the grayscale version is $73, 0.009, 296.813$.

A 20% lighter version of the original color is $93, 9.630, 48.467$, and $53, 9.598, 48.687$ is the 20% darker color. If you saturate the color by 10%, you get $69, 16.543, 46.316$, and if you desaturate by 10%, it is $77, 3.177, 47.036$.

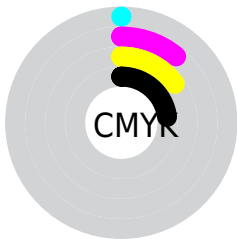
Distribution



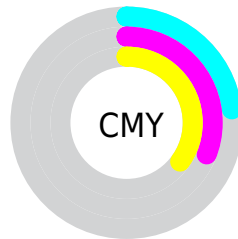
- Red (77%)
- Green (69%)
- Blue (65%)



- Red (77%)
- Yellow (70%)
- Blue (65%)



- Cyan (0%)
- Magenta (11%)
- Yellow (15%)
- Black (23%)



- Cyan (23%)
- Magenta (31%)
- Yellow (35%)

Brightness & Saturation Gradients

These gradients show how the CIELCh color 73, 9.602, 46.664 changes by changing the brightness by 10 percent. The first figure shows a shift by +10% for each color and the second figure -10%.

Similar to the brightness gradients but the following saturation gradients show a change of the CIELCh color 73, 9.602, 46.664 by changing the saturation by 10% instead.

 73, 9.602, 46.664

 73, 9.602, 46.664

 100, 9.602, 46.664

 63, 9.602, 46.664

 93, 9.602, 46.664

 53, 9.602, 46.664

 43, 9.602, 46.664

 33, 9.602, 46.664

 23, 9.602, 46.664

 13, 9.602, 46.664

 3, 9.602, 46.664

 0, 9.602, 46.664

 73, 9.602, 46.664

 73, 9.602, 46.664

69, 16.543, 46.316

77, 3.177, 47.036

65, 24.044, 46.047

81, 2.781, 227.907

61, 32.126, 45.906

86, 8.321, 228.349

57, 40.776, 45.914

90, 13.493,
228.915

54, 49.907, 46.071

94, 16.811,
212.986

51, 59.289, 46.317

48, 68.376, 46.451

96, 19.097,
198.244

46, 76.032, 45.999

45, 79.255, 45.800

Harmonies

Complementary

The Complementary color scheme is a pair of colors which are on the opposite of each other on the color wheel.



73, 9.602, 46.664



75, 8.773, 228.515

Rectangle

The Rectangle color scheme consists of four colors that form a rectangle on the color wheel.



73, 9.602, 46.664



73, 9.602, 96.664



73, 9.602, 226.664



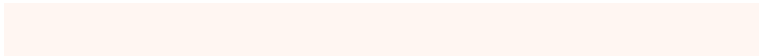
73, 9.602, 276.664

Sweetspot

The Sweet Spot groups the original color and five complimentary colors.



73, 9.601, 46.678



97, 3.735, 47.039



72, 16.387, 333.969



52, 2.556, 47.024



0, 0.000, 0.000



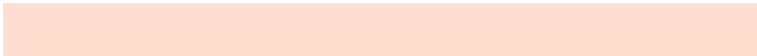
53, 0.007, 296.813

Same Dimension

The Same Dimension uses a secret algorithm to generate beautiful new colors.



73, 9.601, 46.678



91, 14.163, 46.561



77, 12.578, 96.534



40, 3.522, 46.907



37, 68.652, 46.221



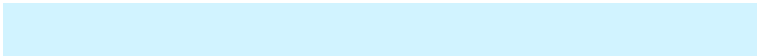
5, 13.740, 35.634

Inverse Universe

The Inverse Universe completely reimagines the original color for something new.



75, 8.773, 228.515



94, 12.688, 228.757



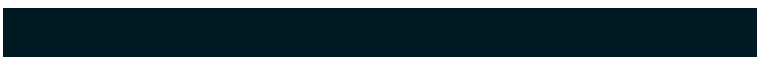
71, 12.737, 280.284



41, 3.339, 228.118



47, 33.325, 249.178



8, 11.190, 238.735

Previews

White Background



This preview shows how the CIELCh color 73, 9.602, 46.664 looks on a white background.

Color Contrast Check

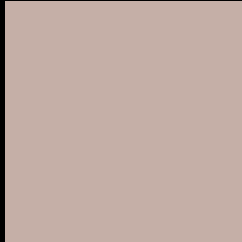
Large Text (above 18pt) WCAG AA × Fail

Any Text WCAG AA × Fail

Large Text (above 18pt) WCAG AAA × Fail

Any Text WCAG AAA × Fail

Black Background



This preview shows how the CIELCh color 73, 9.602, 46.664 looks on a black background.

Color Contrast Check

Large Text (above 18pt) WCAG AA ✓ Pass

Any Text WCAG AA ✓ Pass

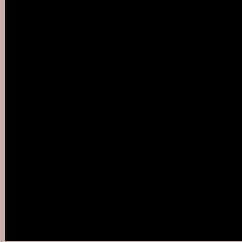
Large Text (above 18pt) WCAG AAA ✓ Pass

Any Text WCAG AAA ✓ Pass

If you want to check with other color combinations, try the [Color Contrast Checker](#).

CIELCh 73, 9.602, 46.664

Background



This preview shows how black text looks on a background with the CIELCh color 73, 9.602, 46.664.



This preview shows how white text looks on a background with the CIELCh color 73, 9.602, 46.664.

Color Blindness Simulation

Color vision deficiency is a very complex topic, and I could not describe the different causes any better than Wikipedia does, so if you want to learn more, you should check out their [article about color blindness](#).

Dichromacy



Original Color

73, 9.602, 46.664

Protanopia

73, 5.860, 86.529

Deuteranopia

73, 11.417, 36.671



Tritanopia
73, 12.361, 345.800

Trichromacy



Original Color
73, 9.602, 46.664

Protanomaly
73, 6.706, 66.050

Deuteranomaly
73, 10.467, 41.225

Tritanomaly
73, 9.895, 4.406

Monochromacy



Original Color
73, 9.602, 46.664

Achromatopsia
73, 0.009, 296.813

Achromatomaly
73, 3.425, 47.734

CSS Examples

Text

The CSS property to change the color of the text to CIELCh 73, 9.602, 46.664 is called "color". The color property can be set on classes, ids or directly on the HTML element.

This example shows how text in the color `rgb(197, 175, 167)` looks like.

```
.text, #text, p{  
    color:rgb(197, 175, 167)  
}
```

If you want to add a text shadow in that color use the text-shadow property, you can generate a text shadow directly with our [CSS Text Shadow Generator](#).

Here you see how black text with a 4 pixel rgb(197, 175, 167) colored shadow looks like.

```
.shadow{ text-shadow: 4px 4px 2px rgb(197, 175, 167) }
```

Border

The CSS property to change the border of an element to CIELCh 73, 9.602, 46.664 is called "border". The border property can be set on classes, ids or directly on the HTML element.

This example shows the color as border, it can be applied via the CSS property "border" or "border-color".

```
.border, #border, table{ border:4px solid rgb(197, 175, 167) }
```

If only the border color should be changed use the property `border-color`.

```
.border{ border-color:rgb(197, 175, 167) }
```

If you want to add a box shadow in that color use:

Here you see how a box with a 4 pixel `rgb(197, 175, 167)` colored shadow looks like.

```
.boxshadow{ -moz-box-shadow:4px 4px 4px  
4px rgb(197, 175, 167); -webkit-box-  
shadow:4px 4px 4px 4px rgb(197, 175, 167);  
box-shadow:4px 4px 4px 4px rgb(197, 175,  
167) }
```

Background

The CSS property to change the background color of an element to CIELCh 73, 9.602, 46.664 is called "background". The background property can be set on classes, ids or directly on the HTML element.

```
.background, #background, body{  
background: rgb(197, 175, 167) }
```

If only the background color should be changed can be used:

```
.background{ background-color: rgb(197,  
175, 167) }
```

This example shows the color as background, it is applied via the CSS property "background".

To optimize and compress your CSS code, you can use our [online CSS compressor and optimizer](#) based on csstidy. If you want to create a linear or radial gradient as background or border, check our [CSS Gradient Generator](#).

Hey! You found this booklet interesting? Support Converting Colors with the new Membership Option!

The pro membership hides all ads, plus gives you double the colors in the color bucket, and more awesome pro features!

[Learn more, Memberships starting at \\$2.50/m!](#)

**Follow me
on Twitter!**

@ConvertingColor