

Converting Colors

CIELCh(73, 9.787, 1.758)

Have a look what the booklet for
CIELCh(73, 9.787, 1.758) contains.

CIELCh(73, 10.040, 1.426)	3
<i>Conversions</i>	4
<i>Details</i>	6
<i>Harmonies</i>	11
<i>Previews</i>	20
<i>Color Blindness Simulation</i>	23
<i>CSS Examples</i>	26

Color

CIELCh(73, 10.040, 1.426)

Conversions

Conversions Part 1

Format	Color
Hex	C6ADB3
RGB	198, 173, 179
RGB Percent	78%, 68%, 70%
CMY	0.2234, 0.3214, 0.2979
CMYK	0.00, 0.13, 0.10, 0.22
HSL	346°, 18%, 73%
HSV	346°, 13%, 78%
XYZ	46.3857, 45.1644, 48.9365
YIQ	181.1590, 12.9740, 7.1660

Conversions

Conversions Part 2

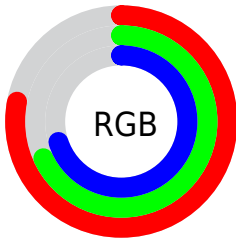
Format	Color
R_{YB}	198, 173, 179
Decimal	13020595
CIE Lab	73.00, 10.04, 0.25
CIE LCh	73, 10.040, 1.426
Yxy	45.1644, 0.3302, 0.3215
Android (android.graphics.Color)	4291210675 (0xFFC6ADB3)
YUV	181.1590, -1.0644, 14.7696
Hunter-Lab	67.2044, 5.5961, 3.8697

Details

The CIELCh color $73, 10.040, 1.426$ is a light color, and the websafe version is hex `CC9999`. A complement of this color would be $78, 9.606, 179.156$, and the grayscale version is $74, 0.009, 296.813$.

A 20% lighter version of the original color is $93, 10.377, 359.819$, and $53, 9.784, 3.430$ is the 20% darker color. If you saturate the color by 10%, you get $68, 18.395, 2.608$, and if you desaturate by 10%, it is $78, 2.038, 0.255$.

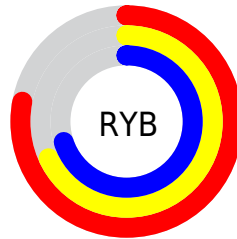
Distribution



Red (78%)

Green (68%)

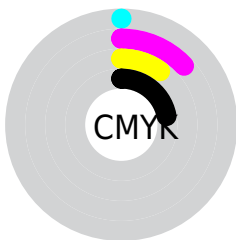
Blue (70%)



Red (78%)

Yellow (68%)

Blue (70%)

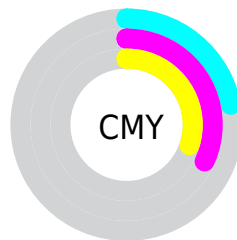


Cyan (0%)

Magenta (13%)

Yellow (10%)

Black (22%)



Cyan (22%)

Magenta (32%)

Yellow (30%)

Brightness & Saturation Gradients

These gradients show how the CIELCh color 73, 10.040, 1.426 changes by changing the brightness by 10 percent. The first figure shows a shift by +10% for each color and the second figure -10%.

Similar to the brightness gradients but the following saturation gradients show a change of the CIELCh color 73, 10.040, 1.426 by changing the saturation by 10% instead.

 73, 10.040, 1.426

 73, 10.040, 1.426

 100, 10.040, 1.426

 63, 10.040, 1.426

 93, 10.040, 1.426

 53, 10.040, 1.426

 43, 10.040, 1.426

 33, 10.040, 1.426

 23, 10.040, 1.426

 13, 10.040, 1.426

 3, 10.040, 1.426

 0, 10.040, 1.426

 73, 10.040, 1.426

 73, 10.040, 1.426

68, 18.395, 2.608

78, 2.038, 0.255

63, 27.030, 3.987

84, 5.573, 179.730

58, 35.793, 5.656

90, 12.796,
178.926

53, 44.442, 7.719

95, 19.648,
178.241

49, 52.654, 10.311

46, 60.066, 13.591

96, 18.739,
197.151

44, 66.400, 17.704

96, 18.700,
198.270

42, 71.612, 22.681

42, 75.074, 26.607

Harmonies

Complementary

The Complementary color scheme is a pair of colors which are on the opposite of each other on the color wheel.



73, 10.040, 1.426



78, 9.606, 179.156

Rectangle

The Rectangle color scheme consists of four colors that form a rectangle on the color wheel.



73, 10.040, 1.426



73, 10.040, 51.426



73, 10.040, 181.426



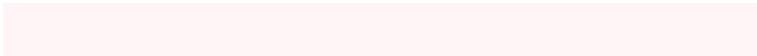
73, 10.040, 231.426

Sweetspot

The Sweet Spot groups the original color and five complimentary colors.



73, 10.038, 1.433



97, 3.828, 0.474



73, 15.263, 317.820



51, 2.725, 0.571



0, 0.000, 0.000



53, 0.007, 296.813

Same Dimension

The Same Dimension uses a secret algorithm to generate beautiful new colors.



73, 10.038, 1.433



90, 14.735, 1.724



74, 7.958, 44.833



39, 4.491, 1.081



34, 64.620, 25.730



4, 16.301, 7.174

Inverse Universe

The Inverse Universe completely reimagines the original color for something new.



73, 10.038, 1.433



90, 14.735, 1.724



76, 7.380, 226.179



39, 4.491, 1.081



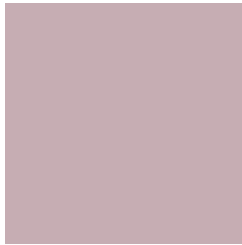
34, 64.620, 25.730



4, 16.301, 7.174

Previews

White Background



This preview shows how the CIELCh color 73, 10.040, 1.426 looks on a white background.

Color Contrast Check

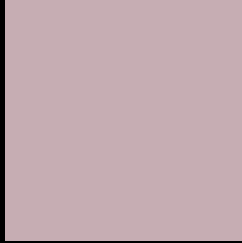
Large Text (above 18pt) WCAG AA × Fail

Any Text WCAG AA × Fail

Large Text (above 18pt) WCAG AAA × Fail

Any Text WCAG AAA × Fail

Black Background



This preview shows how the CIELCh color 73, 10.040, 1.426 looks on a black background.

Color Contrast Check

Large Text (above 18pt) WCAG AA ✓ Pass

Any Text WCAG AA ✓ Pass

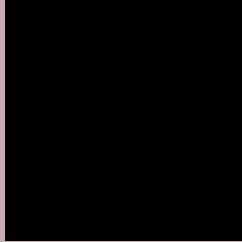
Large Text (above 18pt) WCAG AAA ✓ Pass

Any Text WCAG AAA ✓ Pass

If you want to check with other color combinations, try the [Color Contrast Checker](#).

CIELCh 73, 10.040, 1.426

Background



This preview shows how black text looks on a background with the CIELCh color 73, 10.040, 1.426.



This preview shows how white text looks on a background with the CIELCh color 73, 10.040, 1.426.

Color Blindness Simulation

Color vision deficiency is a very complex topic, and I could not describe the different causes any better than Wikipedia does, so if you want to learn more, you should check out their [article about color blindness](#).

Dichromacy



Original Color

73, 10.040, 1.426

Protanopia

73, 2.653, 324.470

Deuteranopia

73, 9.145, 2.995



Tritanopia
73, 12.361, 345.800

Trichromacy



Original Color
73, 10.040, 1.426

Protanomaly
73, 5.276, 348.880

Deuteranomaly
73, 9.145, 2.995

Tritanomaly
73, 11.806, 350.174

Monochromacy



Original Color
73, 10.040, 1.426

Achromatopsia
74, 0.009, 296.813

Achromatomaly
73, 3.559, 1.874

CSS Examples

Text

The CSS property to change the color of the text to CIELCh 73, 10.040, 1.426 is called "color". The color property can be set on classes, ids or directly on the HTML element.

This example shows how text in the color `rgb(198, 173, 179)` looks like.

```
.text, #text, p{  
    color:rgb(198, 173, 179)  
}
```

If you want to add a text shadow in that color use the text-shadow property, you can generate a text shadow directly with our [CSS Text Shadow Generator](#).

Here you see how black text with a 4 pixel rgb(198, 173, 179) colored shadow looks like.

```
.shadow{ text-shadow: 4px 4px 2px rgb(198, 173, 179) }
```

Border

The CSS property to change the border of an element to CIELCh 73, 10.040, 1.426 is called "border". The border property can be set on classes, ids or directly on the HTML element.

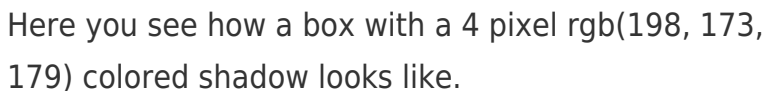
This example shows the color as border, it can be applied via the CSS property "border" or "border-color".

```
.border, #border, table{ border:4px solid rgb(198, 173, 179) }
```

If only the border color should be changed use the property `border-color`.

```
.border{ border-color:rgb(198, 173, 179) }
```

If you want to add a box shadow in that color use:



Here you see how a box with a 4 pixel `rgb(198, 173, 179)` colored shadow looks like.

```
.boxshadow{ -moz-box-shadow:4px 4px 4px  
4px rgb(198, 173, 179); -webkit-box-  
shadow:4px 4px 4px 4px rgb(198, 173, 179);  
box-shadow:4px 4px 4px 4px rgb(198, 173,  
179) }
```

Background

The CSS property to change the background color of an element to CIELCh 73, 10.040, 1.426 is called "background". The background property can be set on classes, ids or directly on the HTML element.

```
.background, #background, body{  
background: rgb(198, 173, 179) }
```

If only the background color should be changed can be used:

```
.background{ background-color: rgb(198,  
173, 179) }
```

This example shows the color as background, it is applied via the CSS property "background".

To optimize and compress your CSS code, you can use our [online CSS compressor and optimizer](#) based on csstidy. If you want to create a linear or radial gradient as background or border, check our [CSS Gradient Generator](#).

Hey! You found this booklet interesting? Support Converting Colors with the new Membership Option!

The pro membership hides all ads, plus gives you double the colors in the color bucket, and more awesome pro features!

[Learn more, Memberships starting at \\$2.50/m!](#)

**Follow me
on Twitter!**

@ConvertingColor