

Converting Colors

CIELCh(74, 10.045, 36.932)

Have a look what the booklet for
CIELCh(74, 10.045, 36.932) contains.

CIELCh(74, 9.848, 39.180)	3
<i>Conversions</i>	4
<i>Details</i>	6
<i>Harmonies</i>	11
<i>Previews</i>	20
<i>Color Blindness Simulation</i>	23
<i>CSS Examples</i>	26

Color

CIELCh(74, 9.848, 39.180)

Conversions

Conversions Part 1

Format	Color
Hex	C9B1AB
RGB	201, 177, 171
RGB Percent	79%, 69%, 67%
CMY	0.2125, 0.3065, 0.3301
CMYK	0.00, 0.12, 0.15, 0.21
HSL	12°, 22%, 73%
HSV	12°, 15%, 79%
XYZ	47.0632, 46.7039, 44.9779
YIQ	183.4920, 16.2300, 3.2220

Conversions

Conversions Part 2

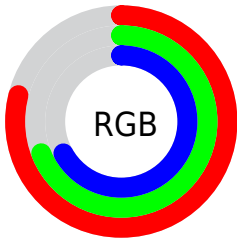
Format	Color
RYB	201, 179, 171
Decimal	13218219
CIELab	74.00, 7.63, 6.22
CIELCh	74, 9.848, 39.180
Yxy	46.7039, 0.3392, 0.3366
Android (android.graphics.Color)	4291408299 (0xFFC9B1AB)
YUV	183.4920, -6.1586, 15.3545
Hunter-Lab	68.3403, 3.3303, 8.8167

Details

The CIELCh color **74, 9.848, 39.180** is a light color, and the websafe version is hex **CCCCCC**. A complement of this color would be **77, 8.950, 220.035**, and the grayscale version is **75, 0.009, 296.813**.

A 20% lighter version of the original color is **94, 8.796, 43.871**, and **54, 10.019, 36.905** is the 20% darker color. If you saturate the color by 10%, you get **69, 17.137, 39.187**, and if you desaturate by 10%, it is **79, 3.123, 39.217**.

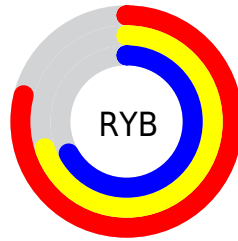
Distribution



Red (79%)

Green (69%)

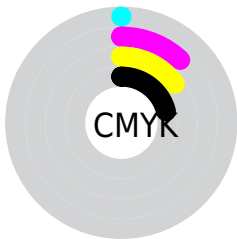
Blue (67%)



Red (79%)

Yellow (70%)

Blue (67%)

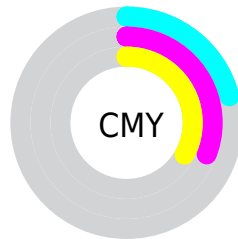


Cyan (0%)

Magenta (12%)

Yellow (15%)

Black (21%)



Cyan (21%)

Magenta (31%)

Yellow (33%)

Brightness & Saturation Gradients

These gradients show how the CIELCh color 74, 9.848, 39.180 changes by changing the brightness by 10 percent. The first figure shows a shift by +10% for each color and the second figure -10%.

Similar to the brightness gradients but the following saturation gradients show a change of the CIELCh color 74, 9.848, 39.180 by changing the saturation by 10% instead.

 74, 9.848, 39.180

 74, 9.848, 39.180

 100, 9.848, 39.180

 64, 9.848, 39.180

 94, 9.848, 39.180

 54, 9.848, 39.180

 44, 9.848, 39.180

 34, 9.848, 39.180

 24, 9.848, 39.180

 14, 9.848, 39.180

 4, 9.848, 39.180

 0, 9.848, 39.180

 74, 9.848, 39.180

 74, 9.848, 39.180

69, 17.137, 39.187

79, 3.123, 39.217

65, 25.031, 39.314

83, 3.086, 219.796

61, 33.546, 39.620

88, 8.835, 219.970

57, 42.654, 40.143

93, 14.176,
220.279

53, 52.255, 40.900

96, 17.849,
198.324

50, 62.099, 41.848

47, 71.626, 42.787

45, 79.619, 43.189

44, 83.050, 43.368

Harmonies

Complementary

The Complementary color scheme is a pair of colors which are on the opposite of each other on the color wheel.



74, 9.848, 39.180



77, 8.950, 220.035

Rectangle

The Rectangle color scheme consists of four colors that form a rectangle on the color wheel.



74, 9.848, 39.180



74, 9.848, 89.180



74, 9.848, 219.180



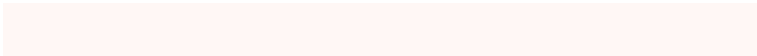
74, 9.848, 269.180

Sweetspot

The Sweet Spot groups the original color and five complimentary colors.



74, 9.847, 39.194



98, 3.062, 39.196



73, 17.110, 331.444



52, 2.183, 39.215



0, 0.000, 0.000



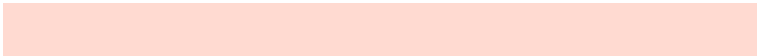
53, 0.007, 296.813

Same Dimension

The Same Dimension uses a secret algorithm to generate beautiful new colors.



74, 9.847, 39.194



90, 14.606, 39.180



78, 11.717, 91.851



40, 3.626, 39.226



36, 70.817, 43.720



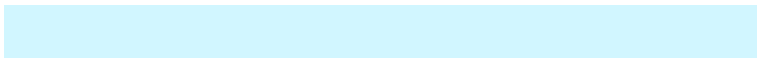
5, 14.161, 31.141

Inverse Universe

The Inverse Universe completely reimagines the original color for something new.



77, 8.950, 220.035



95, 12.969, 220.178



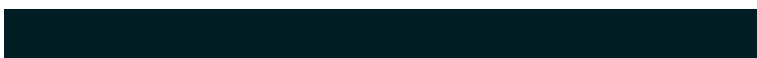
73, 11.751, 275.707



41, 3.422, 219.852



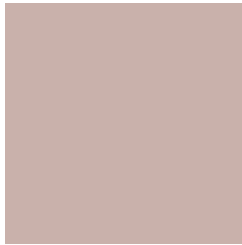
50, 31.438, 235.190



9, 11.166, 226.280

Previews

White Background



This preview shows how the CIELCh color 74, 9.848, 39.180 looks on a white background.

Color Contrast Check

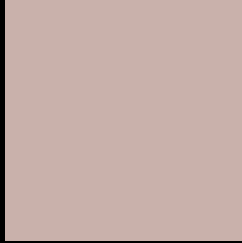
Large Text (above 18pt) WCAG AA × Fail

Any Text WCAG AA × Fail

Large Text (above 18pt) WCAG AAA × Fail

Any Text WCAG AAA × Fail

Black Background



This preview shows how the CIE LCh color 74, 9.848, 39.180 looks on a black background.

Color Contrast Check

Large Text (above 18pt) WCAG AA ✓ Pass

Any Text WCAG AA ✓ Pass

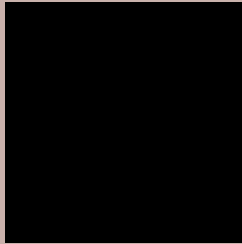
Large Text (above 18pt) WCAG AAA ✓ Pass

Any Text WCAG AAA ✓ Pass

If you want to check with other color combinations, try the [Color Contrast Checker](#).

CIELCh 74, 9.848, 39.180

Background



This preview shows how black text looks on a background with the CIELCh color 74, 9.848, 39.180.

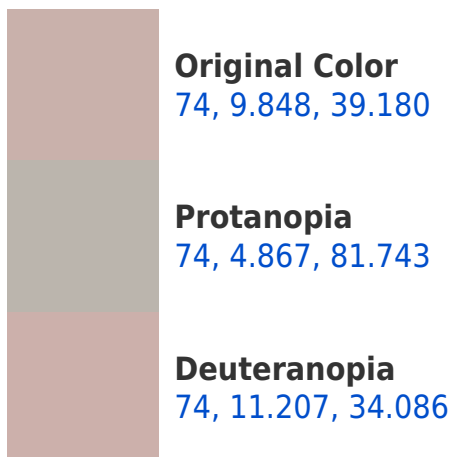


This preview shows how white text looks on a background with the CIELCh color 74, 9.848, 39.180.

Color Blindness Simulation

Color vision deficiency is a very complex topic, and I could not describe the different causes any better than Wikipedia does, so if you want to learn more, you should check out their [article about color blindness](#).

Dichromacy





Tritanopia
74, 13.250, 345.798

Trichromacy



Original Color
74, 9.848, 39.180

Protanomaly
74, 6.244, 56.814

Deuteranomaly
74, 10.822, 34.561

Tritanomaly
74, 10.907, 0.108

Monochromacy



Original Color
74, 9.848, 39.180

Achromatopsia
74, 0.009, 296.813

Achromatomaly
74, 3.192, 39.209

CSS Examples

Text

The CSS property to change the color of the text to CIELCh 74, 9.848, 39.180 is called "color". The color property can be set on classes, ids or directly on the HTML element.

This example shows how text in the color `rgb(201, 177, 171)` looks like.

```
.text, #text, p{  
    color:rgb(201, 177, 171)  
}
```

If you want to add a text shadow in that color use the text-shadow property, you can generate a text shadow directly with our [CSS Text Shadow Generator](#).

Here you see how black text with a 4 pixel rgb(201, 177, 171) colored shadow looks like.

```
.shadow{ text-shadow: 4px 4px 2px rgb(201, 177, 171) }
```

Border

The CSS property to change the border of an element to CIELCh 74, 9.848, 39.180 is called "border". The border property can be set on classes, ids or directly on the HTML element.

This example shows the color as border, it can be applied via the CSS property "border" or "border-color".

```
.border, #border, table{ border:4px solid rgb(201, 177, 171) }
```

If only the border color should be changed use the property border-color.

```
.border{ border-color:rgb(201, 177, 171) }
```

If you want to add a box shadow in that color use:

Here you see how a box with a 4 pixel rgb(201, 177, 171) colored shadow looks like.

```
.boxshadow{ -moz-box-shadow:4px 4px 4px  
4px rgb(201, 177, 171); -webkit-box-  
shadow:4px 4px 4px 4px rgb(201, 177, 171);  
box-shadow:4px 4px 4px 4px rgb(201, 177,  
171) }
```

Background

The CSS property to change the background color of an element to CIELCh 74, 9.848, 39.180 is called "background". The background property can be set on classes, ids or directly on the HTML element.

```
.background, #background, body{  
background: rgb(201, 177, 171) }
```

If only the background color should be changed can be used:

```
.background{ background-color: rgb(201,  
177, 171) }
```

This example shows the color as background, it is applied via the CSS property "background".

To optimize and compress your CSS code, you can use our [online CSS compressor and optimizer](#) based on csstidy. If you want to create a linear or radial gradient as background or border, check our [CSS Gradient Generator](#).

Hey! You found this booklet interesting? Support Converting Colors with the new Membership Option!

The pro membership hides all ads, plus gives you double the colors in the color bucket, and more awesome pro features!

[Learn more, Memberships starting at \\$2.50/m!](#)

**Follow me
on Twitter!**

@ConvertingColor