

Converting Colors

CIELCh(74, 10.233, 60.717)

Have a look what the booklet for
CIELCh(74, 10.233, 60.717) contains.

CIELCh(74, 10.153, 59.306)	3
<i>Conversions</i>	4
<i>Details</i>	6
<i>Harmonies</i>	11
<i>Previews</i>	20
<i>Color Blindness Simulation</i>	23
<i>CSS Examples</i>	26

Color

CIELCh(74, 10.153, 59.306)

Conversions

Conversions Part 1

Format	Color
Hex	C6B2A6
RGB	198, 178, 166
RGB Percent	78%, 70%, 65%
CMY	0.2228, 0.3012, 0.3483
CMYK	0.00, 0.10, 0.16, 0.22
HSL	23°, 22%, 71%
HSV	23°, 16%, 78%
XYZ	46.1937, 46.7039, 42.7430
YIQ	182.6120, 15.7720, 0.5080

Conversions

Conversions Part 2

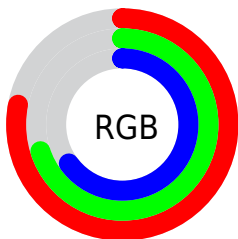
Format	Color
RYB	198, 185, 166
Decimal	13021862
CIELab	74.00, 5.18, 8.73
CIELCh	74, 10.153, 59.306
Yxy	46.7039, 0.3406, 0.3443
Android (android.graphics.Color)	4291211942 (0xFFC6B2A6)
YUV	182.6120, -8.1897, 13.4953
Hunter-Lab	68.3403, 1.0592, 10.7556

Details

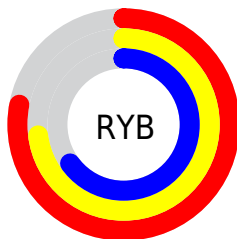
The CIELCh color `74, 10.153, 59.306` is a light color, and the websafe version is hex `CCCCCC`. A complement of this color would be `74, 9.429, 242.698`, and the grayscale version is `74, 0.009, 296.813`.

A 20% lighter version of the original color is `94, 10.208, 60.405`, and `54, 10.231, 57.975` is the 20% darker color. If you saturate the color by 10%, you get `70, 17.004, 58.446`, and if you desaturate by 10%, it is `78, 3.739, 60.165`.

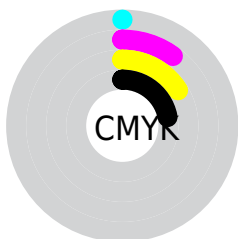
Distribution



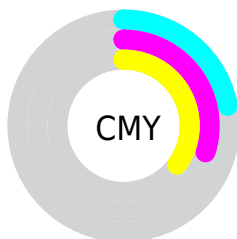
- Red (78%)
- Green (70%)
- Blue (65%)



- Red (78%)
- Yellow (73%)
- Blue (65%)



- Cyan (0%)
- Magenta (10%)
- Yellow (16%)
- Black (22%)



- Cyan (22%)
- Magenta (30%)
- Yellow (35%)

Brightness & Saturation Gradients

These gradients show how the CIELCh color 74, 10.153, 59.306 changes by changing the brightness by 10 percent. The first figure shows a shift by +10% for each color and the second figure -10%.

Similar to the brightness gradients but the following saturation gradients show a change of the CIELCh color 74, 10.153, 59.306 by changing the saturation by 10% instead.

■ 74, 10.153, 59.306

■ 74, 10.153, 59.306

■ 100, 10.153,
59.306

■ 64, 10.153, 59.306

■ 94, 10.153, 59.306

■ 54, 10.153, 59.306

■ 44, 10.153, 59.306

■ 34, 10.153, 59.306

■ 24, 10.153, 59.306

■ 14, 10.153, 59.306

■ 4, 10.153, 59.306

■ 0, 10.153, 59.306

■ 74, 10.153, 59.306

■ 74, 10.153, 59.306

70, 17.004, 58.446

78, 3.739, 60.165

67, 24.328, 57.607

81, 2.279, 241.428

63, 32.140, 56.822

85, 7.944, 242.228

60, 40.420, 56.093

89, 13.298,
243.141

57, 49.065, 55.398

92, 15.530,
228.519

54, 57.811, 54.653

51, 66.071, 53.647

96, 17.834,
202.490

49, 72.790, 51.976

96, 18.653,
198.273

48, 75.171, 51.362

Harmonies

Complementary

The Complementary color scheme is a pair of colors which are on the opposite of each other on the color wheel.



74, 10.153, 59.306



74, 9.429, 242.698

Rectangle

The Rectangle color scheme consists of four colors that form a rectangle on the color wheel.



74, 10.153, 59.306



74, 10.153, 109.306



74, 10.153, 239.306



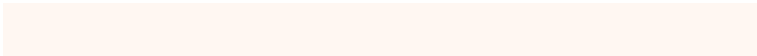
74, 10.153, 289.306

Sweetspot

The Sweet Spot groups the original color and five complimentary colors.



74, 10.153, 59.320



98, 3.717, 60.239



72, 16.286, 338.293



52, 2.542, 60.191



0, 0.000, 0.000



53, 0.007, 296.813

Same Dimension

The Same Dimension uses a secret algorithm to generate beautiful new colors.



74, 10.153, 59.320



91, 14.812, 59.044



78, 14.848, 102.388



40, 3.496, 59.908



40, 64.767, 51.905



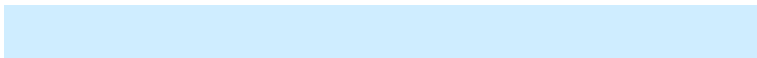
6, 13.212, 44.180

Inverse Universe

The Inverse Universe completely reimagines the original color for something new.



74, 9.429, 242.698



92, 13.538, 243.111



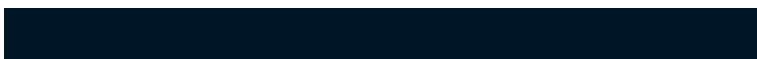
70, 15.229, 286.064



40, 3.358, 241.911



41, 39.880, 268.240



6, 12.150, 256.490

Previews

White Background



This preview shows how the CIELCh color 74, 10.153, 59.306 looks on a white background.

Color Contrast Check

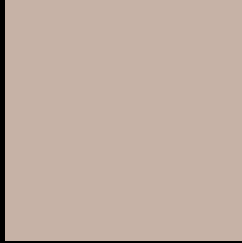
Large Text (above 18pt) WCAG AA × Fail

Any Text WCAG AA × Fail

Large Text (above 18pt) WCAG AAA × Fail

Any Text WCAG AAA × Fail

Black Background



This preview shows how the CIELCh color 74, 10.153, 59.306 looks on a black background.

Color Contrast Check

Large Text (above 18pt) WCAG AA ✓ Pass

Any Text WCAG AA ✓ Pass

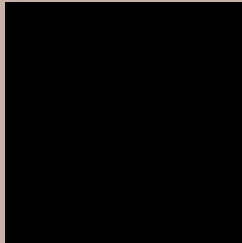
Large Text (above 18pt) WCAG AAA ✓ Pass

Any Text WCAG AAA ✓ Pass

If you want to check with other color combinations, try the [Color Contrast Checker](#).

CIELCh 74, 10.153, 59.306

Background



This preview shows how black text looks on a background with the CIELCh color 74, 10.153, 59.306.



This preview shows how white text looks on a background with the CIELCh color 74, 10.153, 59.306.

Color Blindness Simulation

Color vision deficiency is a very complex topic, and I could not describe the different causes any better than Wikipedia does, so if you want to learn more, you should check out their [article about color blindness](#).

Dichromacy



Original Color

74, 10.153, 59.306

Protanopia

74, 7.646, 85.700

Deuteranopia

74, 12.379, 43.183



Tritanopia
74, 12.329, 342.658

Trichromacy



Original Color
74, 10.153, 59.306

Protanomaly
74, 8.405, 75.909

Deuteranomaly
74, 11.532, 47.837

Tritanomaly
74, 9.493, 3.711

Monochromacy



Original Color
74, 10.153, 59.306

Achromatopsia
74, 0.009, 296.813

Achromatomaly
74, 3.702, 55.074

CSS Examples

Text

The CSS property to change the color of the text to CIELCh 74, 10.153, 59.306 is called "color". The color property can be set on classes, ids or directly on the HTML element.

This example shows how text in the color `rgb(198, 178, 166)` looks like.

```
.text, #text, p{  
    color:rgb(198, 178, 166)  
}
```

If you want to add a text shadow in that color use the text-shadow property, you can generate a text shadow directly with our [CSS Text Shadow Generator](#).

Here you see how black text with a 4 pixel rgb(198, 178, 166) colored shadow looks like.

```
.shadow{ text-shadow: 4px 4px 2px rgb(198, 178, 166) }
```

Border

The CSS property to change the border of an element to CIELCh 74, 10.153, 59.306 is called "border". The border property can be set on classes, ids or directly on the HTML element.

This example shows the color as border, it can be applied via the CSS property "border" or "border-color".

```
.border, #border, table{ border:4px solid rgb(198, 178, 166) }
```

If only the border color should be changed use the property `border-color`.

```
.border{ border-color:rgb(198, 178, 166) }
```

If you want to add a box shadow in that color use:

Here you see how a box with a 4 pixel `rgb(198, 178, 166)` colored shadow looks like.

```
.boxshadow{ -moz-box-shadow:4px 4px 4px  
4px rgb(198, 178, 166); -webkit-box-  
shadow:4px 4px 4px 4px rgb(198, 178, 166);  
box-shadow:4px 4px 4px 4px rgb(198, 178,  
166) }
```

Background

The CSS property to change the background color of an element to CIELCh 74, 10.153, 59.306 is called "background". The background property can be set on classes, ids or directly on the HTML element.

```
.background, #background, body{  
background: rgb(198, 178, 166) }
```

If only the background color should be changed can be used:

```
.background{ background-color: rgb(198,  
178, 166) }
```

This example shows the color as background, it is applied via the CSS property "background".

To optimize and compress your CSS code, you can use our [online CSS compressor and optimizer](#) based on csstidy. If you want to create a linear or radial gradient as background or border, check our [CSS Gradient Generator](#).

Hey! You found this booklet interesting? Support Converting Colors with the new Membership Option!

The pro membership hides all ads, plus gives you double the colors in the color bucket, and more awesome pro features!

[Learn more, Memberships starting at \\$2.50/m!](#)

**Follow me
on Twitter!**

@ConvertingColor