

Converting Colors

CIELCh(74, 10.241, 6.948)

Have a look what the booklet for
CIELCh(74, 10.241, 6.948) contains.

CIELCh(74, 10.123, 7.973)	3
<i>Conversions</i>	4
<i>Details</i>	6
<i>Harmonies</i>	11
<i>Previews</i>	20
<i>Color Blindness Simulation</i>	23
<i>CSS Examples</i>	26

Color

CIELCh(74, 10.123, 7.973)

Conversions

Conversions Part 1

Format	Color
Hex	CAB0B4
RGB	202, 176, 180
RGB Percent	79%, 69%, 71%
CMY	0.2092, 0.3111, 0.2955
CMYK	0.00, 0.13, 0.11, 0.21
HSL	351°, 20%, 74%
HSV	351°, 13%, 79%
XYZ	47.9219, 46.7039, 49.4846
YIQ	184.2300, 14.2120, 6.7560

Conversions

Conversions Part 2

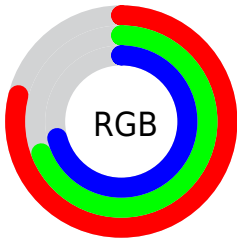
Format	Color
R _Y B	202, 176, 180
Decimal	13283508
CIE Lab	74.00, 10.03, 1.40
CIE LCh	74, 10.123, 7.973
Yxy	46.7039, 0.3325, 0.3241
Android (android.graphics.Color)	4291473588 (0xFFCAB0B4)
YUV	184.2300, -2.0854, 15.5843
Hunter-Lab	68.3403, 5.5732, 4.9068

Details

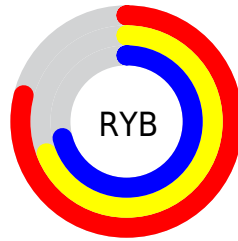
The CIELCh color **74, 10.123, 7.973** is a light color, and the websafe version is hex **CC9999**. A complement of this color would be **79, 9.551, 185.802**, and the grayscale version is **75, 0.009, 296.813**.

A 20% lighter version of the original color is **94, 8.528, 6.024**, and **54, 10.433, 7.896** is the 20% darker color. If you saturate the color by 10%, you get **69, 18.487, 9.135**, and if you desaturate by 10%, it is **80, 2.203, 6.850**.

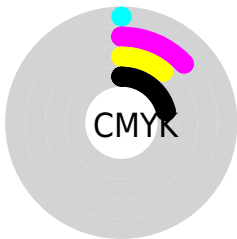
Distribution



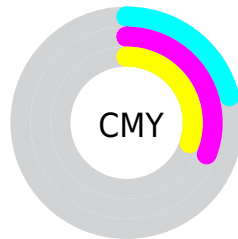
- Red (79%)
- Green (69%)
- Blue (71%)



- Red (79%)
- Yellow (69%)
- Blue (71%)



- Cyan (0%)
- Magenta (13%)
- Yellow (11%)
- Black (21%)



- Cyan (21%)
- Magenta (31%)
- Yellow (30%)

Brightness & Saturation Gradients

These gradients show how the CIELCh color 74, 10.123, 7.973 changes by changing the brightness by 10 percent. The first figure shows a shift by +10% for each color and the second figure -10%.

Similar to the brightness gradients but the following saturation gradients show a change of the CIELCh color 74, 10.123, 7.973 by changing the saturation by 10% instead.

 74, 10.123, 7.973

 74, 10.123, 7.973

 100, 10.123, 7.973

 64, 10.123, 7.973

 94, 10.123, 7.973

 54, 10.123, 7.973

 44, 10.123, 7.973

 34, 10.123, 7.973

 24, 10.123, 7.973

 14, 10.123, 7.973

 4, 10.123, 7.973

 0, 10.123, 7.973

 74, 10.123, 7.973

 74, 10.123, 7.973

69, 18.487, 9.135

80, 2.203, 6.850

63, 27.244, 10.519

85, 5.256, 186.385

58, 36.269, 12.226

91, 12.272,
185.634

54, 45.351, 14.369

96, 18.287,
186.776

50, 54.197, 17.085

47, 62.478, 20.514

97, 17.598,
198.340

44, 69.925, 24.731

43, 76.411, 29.601

42, 80.560, 33.029

Harmonies

Complementary

The Complementary color scheme is a pair of colors which are on the opposite of each other on the color wheel.



74, 10.123, 7.973



79, 9.551, 185.802

Rectangle

The Rectangle color scheme consists of four colors that form a rectangle on the color wheel.



74, 10.123, 7.973



74, 10.123, 57.973



74, 10.123, 187.973



74, 10.123, 237.973

Sweetspot

The Sweet Spot groups the original color and five complimentary colors.



74, 10.121, 7.982



97, 3.705, 7.022



74, 16.180, 320.369



51, 2.639, 7.117



0, 0.000, 0.000



53, 0.007, 296.813

Same Dimension

The Same Dimension uses a secret algorithm to generate beautiful new colors.



74, 10.121, 7.982



90, 14.349, 8.234



76, 8.109, 54.635



40, 4.452, 7.614



34, 69.098, 32.256



4, 18.098, 11.876

Inverse Universe

The Inverse Universe completely reimagines the original color for something new.



74, 10.121, 7.982



90, 14.349, 8.234



77, 7.595, 236.947



40, 4.452, 7.614



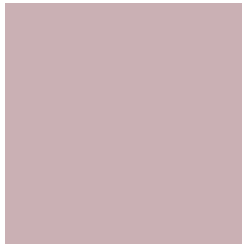
34, 69.098, 32.256



4, 18.098, 11.876

Previews

White Background



This preview shows how the CIELCh color 74, 10.123, 7.973 looks on a white background.

Color Contrast Check

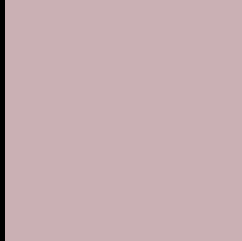
Large Text (above 18pt) WCAG AA × Fail

Any Text WCAG AA × Fail

Large Text (above 18pt) WCAG AAA × Fail

Any Text WCAG AAA × Fail

Black Background



This preview shows how the CIELCh color 74, 10.123, 7.973 looks on a black background.

Color Contrast Check

Large Text (above 18pt) WCAG AA ✓ Pass

Any Text WCAG AA ✓ Pass

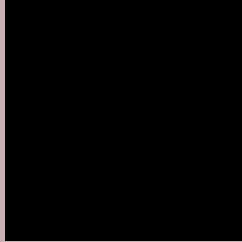
Large Text (above 18pt) WCAG AAA ✓ Pass

Any Text WCAG AAA ✓ Pass

If you want to check with other color combinations, try the [Color Contrast Checker](#).

CIELCh 74, 10.123, 7.973

Background



This preview shows how black text looks on a background with the CIELCh color 74, 10.123, 7.973.



This preview shows how white text looks on a background with the CIELCh color 74, 10.123, 7.973.

Color Blindness Simulation

Color vision deficiency is a very complex topic, and I could not describe the different causes any better than Wikipedia does, so if you want to learn more, you should check out their [article about color blindness](#).

Dichromacy



Original Color

74, 10.123, 7.973

Protanopia

74, 1.856, 343.619

Deuteranopia

74, 9.370, 6.886



Tritanopia
74, 13.250, 345.798

Trichromacy



Original Color
74, 10.123, 7.973

Protanomaly
74, 4.801, 0.001

Deuteranomaly
74, 9.746, 7.449

Tritanomaly
74, 11.859, 353.402

Monochromacy



Original Color
74, 10.123, 7.973

Achromatopsia
75, 0.009, 296.813

Achromatomaly
74, 3.423, 10.484

CSS Examples

Text

The CSS property to change the color of the text to CIELCh 74, 10.123, 7.973 is called "color". The color property can be set on classes, ids or directly on the HTML element.

This example shows how text in the color `rgb(202, 176, 180)` looks like.

```
.text, #text, p{  
    color:rgb(202, 176, 180)  
}
```

If you want to add a text shadow in that color use the text-shadow property, you can generate a text shadow directly with our [CSS Text Shadow Generator](#).

Here you see how black text with a 4 pixel rgb(202, 176, 180) colored shadow looks like.

```
.shadow{ text-shadow: 4px 4px 2px rgb(202, 176, 180) }
```

Border

The CSS property to change the border of an element to CIELCh 74, 10.123, 7.973 is called "border". The border property can be set on classes, ids or directly on the HTML element.

This example shows the color as border, it can be applied via the CSS property "border" or "border-color".

```
.border, #border, table{ border:4px solid rgb(202, 176, 180) }
```

If only the border color should be changed use the property `border-color`.

```
.border{ border-color:rgb(202, 176, 180) }
```

If you want to add a box shadow in that color use:

Here you see how a box with a 4 pixel `rgb(202, 176, 180)` colored shadow looks like.

```
.boxshadow{ -moz-box-shadow:4px 4px 4px  
4px rgb(202, 176, 180); -webkit-box-  
shadow:4px 4px 4px 4px rgb(202, 176, 180);  
box-shadow:4px 4px 4px 4px rgb(202, 176,  
180) }
```

Background

The CSS property to change the background color of an element to CIELCh 74, 10.123, 7.973 is called "background". The background property can be set on classes, ids or directly on the HTML element.

```
.background, #background, body{  
background: rgb(202, 176, 180) }
```

If only the background color should be changed can be used:

```
.background{ background-color: rgb(202,  
176, 180) }
```

This example shows the color as background, it is applied via the CSS property "background".

To optimize and compress your CSS code, you can use our [online CSS compressor and optimizer](#) based on csstidy. If you want to create a linear or radial gradient as background or border, check our [CSS Gradient Generator](#).

Hey! You found this booklet interesting? Support Converting Colors with the new Membership Option!

The pro membership hides all ads, plus gives you double the colors in the color bucket, and more awesome pro features!

[Learn more, Memberships starting at \\$2.50/m!](#)

**Follow me
on Twitter!**

@ConvertingColor