

# Converting Colors

CIELCh(74, 10.374, 7.023)

Have a look what the booklet for  
CIELCh(74, 10.374, 7.023) contains.

<b>CIELCh(74, 10.618, 5.614)</b> .....	3
<i><b>Conversions</b></i> .....	4
<i><b>Details</b></i> .....	6
<i><b>Harmonies</b></i> .....	11
<i><b>Previews</b></i> .....	20
<i><b>Color Blindness Simulation</b></i> .....	23
<i><b>CSS Examples</b></i> .....	26

# **Color**

**CIELCh(74, 10.618, 5.614)**

# Conversions

## Conversions Part 1

Format	Color
Hex	CAAFB4
RGB	202, 175, 180
RGB Percent	79%, 69%, 71%
CMY	0.2065, 0.3124, 0.2928
CMYK	0.00, 0.13, 0.11, 0.21
HSL	349°, 20%, 74%
HSV	349°, 13%, 79%
XYZ	48.1180, 46.7039, 49.8383
YIQ	183.6430, 14.4870, 7.2790

# Conversions

## Conversions Part 2

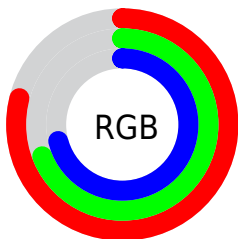
Format	Color
RYP	202, 175, 180
Decimal	13283252
CIELab	74.00, 10.57, 1.04
CIElCh	74, 10.618, 5.614
Yxy	46.7039, 0.3326, 0.3229
Android (android.graphics.Color)	4291473332 (0xFFCAA4B4)
YUV	183.6430, -1.7960, 16.0991
Hunter-Lab	68.3403, 6.0852, 4.6000

# Details

The CIELCh color  $74, 10.618, 5.614$  is a light color, and the websafe version is hex `CC9999`. A complement of this color would be  $79, 10.047, 183.272$ , and the grayscale version is  $75, 0.009, 296.813$ .

A 20% lighter version of the original color is  $94, 9.012, 3.445$ , and  $54, 10.433, 7.896$  is the 20% darker color. If you saturate the color by 10%, you get  $69, 19.055, 6.802$ , and if you desaturate by 10%, it is  $80, 2.592, 4.494$ .

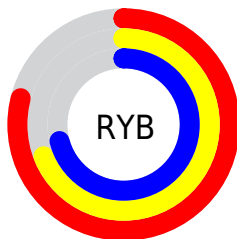
# Distribution



Red (79%)

Green (69%)

Blue (71%)



Red (79%)

Yellow (69%)

Blue (71%)

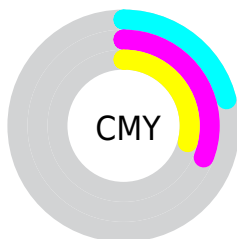


Cyan (0%)

Magenta (13%)

Yellow (11%)

Black (21%)



Cyan (21%)

Magenta (31%)

Yellow (29%)

# Brightness & Saturation Gradients

These gradients show how the CIELCh color 74, 10.618, 5.614 changes by changing the brightness by 10 percent. The first figure shows a shift by +10% for each color and the second figure -10%.

Similar to the brightness gradients but the following saturation gradients show a change of the CIELCh color 74, 10.618, 5.614 by changing the saturation by 10% instead.



 74, 10.618, 5.614

 74, 10.618, 5.614

 100, 10.618, 5.614

 64, 10.618, 5.614

 94, 10.618, 5.614

 54, 10.618, 5.614

 44, 10.618, 5.614

 34, 10.618, 5.614

 24, 10.618, 5.614

 14, 10.618, 5.614

 4, 10.618, 5.614

 0, 10.618, 5.614

 74, 10.618, 5.614

 74, 10.618, 5.614

69, 19.055, 6.802

80, 2.592, 4.494

63, 27.840, 8.210

85, 4.997, 183.961

58, 36.831, 9.936

91, 12.159,  
183.171

54, 45.799, 12.093

96, 18.325,  
184.137

50, 54.433, 14.820

47, 62.390, 18.266

97, 17.383,  
198.353

44, 69.413, 22.531

43, 75.436, 27.535

42, 79.106, 30.913

# Harmonies

# Complementary

The Complementary color scheme is a pair of colors which are on the opposite of each other on the color wheel.



74, 10.618, 5.614



79, 10.047, 183.272

# Rectangle

The Rectangle color scheme consists of four colors that form a rectangle on the color wheel.



74, 10.618, 5.614



74, 10.618, 55.614



74, 10.618, 185.614



74, 10.618, 235.614

# Sweetspot

The Sweet Spot groups the original color and five complimentary colors.



74, 10.616, 5.622



97, 3.744, 4.593



74, 16.656, 319.387



51, 2.666, 4.689



0, 0.000, 0.000



53, 0.007, 296.813



# Same Dimension

The Same Dimension uses a secret algorithm to generate beautiful new colors.



74, 10.616, 5.622



89, 15.473, 5.943



76, 8.466, 50.647



40, 4.494, 5.196



34, 67.688, 30.077



4, 18.174, 10.369





# Inverse Universe

The Inverse Universe completely reimagines the original color for something new.



74, 10.616, 5.622



89, 15.473, 5.943



77, 7.866, 232.671



40, 4.494, 5.196



34, 67.688, 30.077

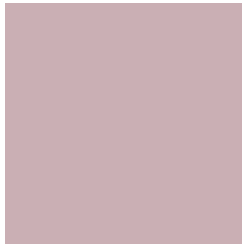


4, 18.174, 10.369



# Previews

## White Background



This preview shows how the CIELCh color 74, 10.618, 5.614 looks on a white background.

## Color Contrast Check

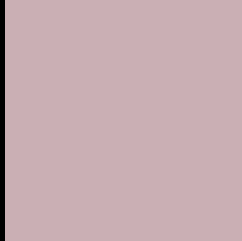
Large Text (above 18pt) WCAG AA × Fail

Any Text WCAG AA × Fail

Large Text (above 18pt) WCAG AAA × Fail

Any Text WCAG AAA × Fail

# Black Background



This preview shows how the CIELCh color 74, 10.618, 5.614 looks on a black background.

## Color Contrast Check

Large Text (above 18pt) WCAG AA ✓ Pass

Any Text WCAG AA ✓ Pass

Large Text (above 18pt) WCAG AAA ✓ Pass

Any Text WCAG AAA ✓ Pass

If you want to check with other color combinations, try the [Color Contrast Checker](#).

# CIELCh 74, 10.618, 5.614

## Background



This preview shows how black text looks on a background with the CIELCh color 74, 10.618, 5.614.



This preview shows how white text looks on a background with the CIELCh color 74, 10.618, 5.614.

# Color Blindness Simulation

Color vision deficiency is a very complex topic, and I could not describe the different causes any better than Wikipedia does, so if you want to learn more, you should check out their [article about color blindness](#).

## Dichromacy



### Original Color

74, 10.618, 5.614

### Protanopia

74, 2.220, 332.340

### Deuteranopia

74, 9.370, 6.886



**Tritanopia**  
74, 13.250, 345.798



# Trichromacy



**Original Color**  
74, 10.618, 5.614

**Protanomaly**  
74, 5.006, 354.179

**Deuteranomaly**  
74, 9.746, 7.449

**Tritanomaly**  
74, 12.444, 352.019

# Monochromacy



**Original Color**  
74, 10.618, 5.614

**Achromatopsia**  
75, 0.009, 296.813

**Achromatomaly**  
75, 3.909, 3.597

# CSS Examples

## Text

The CSS property to change the color of the text to CIELCh 74, 10.618, 5.614 is called "color". The color property can be set on classes, ids or directly on the HTML element.

This example shows how text in the color `rgb(202, 175, 180)` looks like.

```
.text, #text, p{  
    color:rgb(202, 175, 180)  
}
```

If you want to add a text shadow in that color use the text-shadow property, you can generate a text shadow directly with our [CSS Text Shadow Generator](#).

Here you see how black text with a 4 pixel rgb(202, 175, 180) colored shadow looks like.

```
.shadow{ text-shadow: 4px 4px 2px rgb(202, 175, 180) }
```

## Border

The CSS property to change the border of an element to CIELCh 74, 10.618, 5.614 is called "border". The border property can be set on classes, ids or directly on the HTML element.

This example shows the color as border, it can be applied via the CSS property "border" or "border-color".

```
.border, #border, table{ border:4px solid rgb(202, 175, 180) }
```

If only the border color should be changed use the property `border-color`.

```
.border{ border-color:rgb(202, 175, 180) }
```

If you want to add a box shadow in that color use:

Here you see how a box with a 4 pixel `rgb(202, 175, 180)` colored shadow looks like.

```
.boxshadow{ -moz-box-shadow:4px 4px 4px  
4px rgb(202, 175, 180); -webkit-box-  
shadow:4px 4px 4px 4px rgb(202, 175, 180);  
box-shadow:4px 4px 4px 4px rgb(202, 175,  
180) }
```

# Background

The CSS property to change the background color of an element to CIELCh 74, 10.618, 5.614 is called "background". The background property can be set on classes, ids or directly on the HTML element.

```
.background, #background, body{  
background: rgb(202, 175, 180) }
```

If only the background color should be changed can be used:

```
.background{ background-color: rgb(202,  
175, 180) }
```

This example shows the color as background, it is applied via the CSS property "background".

To optimize and compress your CSS code, you can use our [online CSS compressor and optimizer](#) based on csstidy. If you want to create a linear or radial gradient as background or border, check our [CSS Gradient Generator](#).

Hey! You found this booklet interesting? Support Converting Colors with the new Membership Option!

The pro membership hides all ads, plus gives you double the colors in the color bucket, and more awesome pro features!

**[Learn more, Memberships starting at \\$2.50/m!](#)**

**Follow me  
on Twitter!**

@ConvertingColor