

Converting Colors

CIELCh(74, 11.106, 28.523)

Have a look what the booklet for
CIELCh(74, 11.106, 28.523) contains.

CIELCh(74, 10.948, 28.708)	3
<i>Conversions</i>	4
<i>Details</i>	6
<i>Harmonies</i>	11
<i>Previews</i>	20
<i>Color Blindness Simulation</i>	23
<i>CSS Examples</i>	26

Color

CIELCh(74, 10.948, 28.708)

Conversions

Conversions Part 1

Format	Color
Hex	CCB0AD
RGB	204, 176, 173
RGB Percent	80%, 69%, 68%
CMY	0.2014, 0.3112, 0.3229
CMYK	0.00, 0.14, 0.15, 0.20
HSL	6°, 23%, 74%
HSV	6°, 15%, 80%
XYZ	47.7693, 46.7039, 45.8557
YIQ	184.0300, 17.6510, 5.0030

Conversions

Conversions Part 2

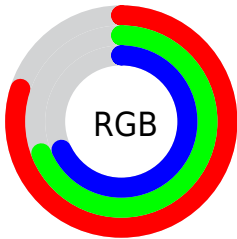
Format	Color
R _Y B	204, 176, 173
Decimal	13414573
CIE Lab	74.00, 9.60, 5.26
CIE LCh	74, 10.948, 28.708
Yxy	46.7039, 0.3404, 0.3328
Android (android.graphics.Color)	4291604653 (0xFFCCB0AD)
YUV	184.0300, -5.4378, 17.5137
Hunter-Lab	68.3403, 5.1746, 8.0552

Details

The CIELCh color **74, 10.948, 28.708** is a light color, and the websafe version is hex **CC9999**. A complement of this color would be **79, 9.896, 208.105**, and the grayscale version is **75, 0.009, 296.813**.

A 20% lighter version of the original color is **94, 8.616, 33.635**, and **54, 11.278, 26.390** is the 20% darker color. If you saturate the color by 10%, you get **69, 18.905, 29.251**, and if you desaturate by 10%, it is **79, 3.602, 28.269**.

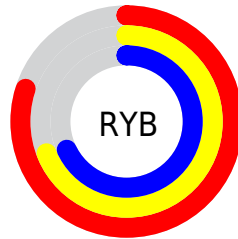
Distribution



Red (80%)

Green (69%)

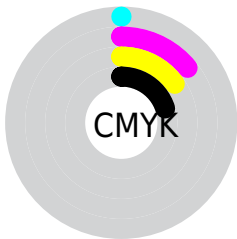
Blue (68%)



Red (80%)

Yellow (69%)

Blue (68%)

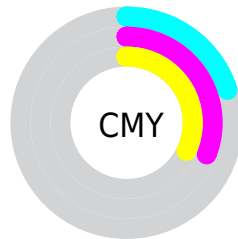


Cyan (0%)

Magenta (14%)

Yellow (15%)

Black (20%)



Cyan (20%)

Magenta (31%)

Yellow (32%)

Brightness & Saturation Gradients

These gradients show how the CIELCh color 74, 10.948, 28.708 changes by changing the brightness by 10 percent. The first figure shows a shift by +10% for each color and the second figure -10%.

Similar to the brightness gradients but the following saturation gradients show a change of the CIELCh color 74, 10.948, 28.708 by changing the saturation by 10% instead.

74, 10.948, 28.708

74, 10.948, 28.708

100, 10.948,
28.708

64, 10.948, 28.708

94, 10.948, 28.708

54, 10.948, 28.708

44, 10.948, 28.708

34, 10.948, 28.708

24, 10.948, 28.708

14, 10.948, 28.708

4, 10.948, 28.708

0, 10.948, 28.708

74, 10.948, 28.708

74, 10.948, 28.708

69, 18.905, 29.251

79, 3.602, 28.269

64, 27.497, 29.986

84, 3.172, 208.383

59, 36.701, 30.994

90, 9.429, 208.138

55, 46.436, 32.346

95, 15.225,
208.057

51, 56.530, 34.092

97, 16.983,
198.379

48, 66.669, 36.212

46, 76.236, 38.484

44, 83.888, 40.234

43, 86.822, 41.037

Harmonies

Complementary

The Complementary color scheme is a pair of colors which are on the opposite of each other on the color wheel.



74, 10.948, 28.708



79, 9.896, 208.105

Rectangle

The Rectangle color scheme consists of four colors that form a rectangle on the color wheel.



74, 10.948, 28.708



74, 10.948, 78.708



74, 10.948, 208.708



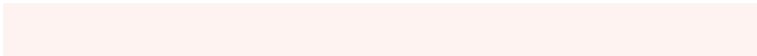
74, 10.948, 258.708

Sweetspot

The Sweet Spot groups the original color and five complimentary colors.



74, 10.947, 28.719



97, 4.141, 28.260



74, 19.131, 327.627



51, 2.833, 28.301



0, 0.000, 0.000



53, 0.007, 296.813

Same Dimension

The Same Dimension uses a secret algorithm to generate beautiful new colors.



74, 10.947, 28.719



89, 15.737, 28.863



78, 10.857, 81.909



40, 3.989, 28.467



35, 74.162, 41.156



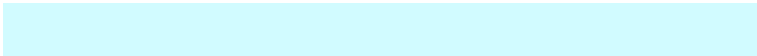
4, 16.928, 24.469

Inverse Universe

The Inverse Universe completely reimagines the original color for something new.



79, 9.896, 208.105



96, 13.921, 208.071



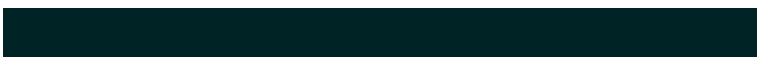
75, 10.652, 266.026



42, 3.755, 208.209



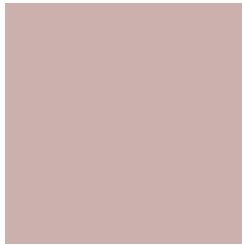
57, 32.428, 213.414



11, 12.287, 209.539

Previews

White Background



This preview shows how the CIELCh color 74, 10.948, 28.708 looks on a white background.

Color Contrast Check

Large Text (above 18pt) WCAG AA × Fail

Any Text WCAG AA × Fail

Large Text (above 18pt) WCAG AAA × Fail

Any Text WCAG AAA × Fail

Black Background



This preview shows how the CIELCh color 74, 10.948, 28.708 looks on a black background.

Color Contrast Check

Large Text (above 18pt) WCAG AA ✓ Pass

Any Text WCAG AA ✓ Pass

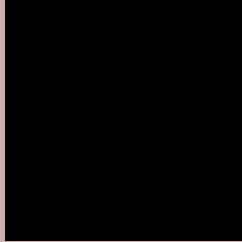
Large Text (above 18pt) WCAG AAA ✓ Pass

Any Text WCAG AAA ✓ Pass

If you want to check with other color combinations, try the [Color Contrast Checker](#).

CIELCh 74, 10.948, 28.708

Background



This preview shows how black text looks on a background with the CIELCh color 74, 10.948, 28.708.



This preview shows how white text looks on a background with the CIELCh color 74, 10.948, 28.708.

Color Blindness Simulation

Color vision deficiency is a very complex topic, and I could not describe the different causes any better than Wikipedia does, so if you want to learn more, you should check out their [article about color blindness](#).

Dichromacy



Original Color

74, 10.948, 28.708

Protanopia

74, 3.509, 69.565

Deuteranopia

74, 10.557, 28.992



Tritanopia
74, 14.208, 348.556

Trichromacy



Original Color
74, 10.948, 28.708

Protanomaly
74, 5.751, 41.723

Deuteranomaly
74, 10.557, 28.992

Tritanomaly
74, 12.531, 0.392

Monochromacy



Original Color
74, 10.948, 28.708

Achromatopsia
75, 0.009, 296.813

Achromatomaly
74, 3.802, 27.717

CSS Examples

Text

The CSS property to change the color of the text to CIELCh 74, 10.948, 28.708 is called "color". The color property can be set on classes, ids or directly on the HTML element.

This example shows how text in the color `rgb(204, 176, 173)` looks like.

```
.text, #text, p{  
    color:rgb(204, 176, 173)  
}
```

If you want to add a text shadow in that color use the text-shadow property, you can generate a text shadow directly with our [CSS Text Shadow Generator](#).

Here you see how black text with a 4 pixel rgb(204, 176, 173) colored shadow looks like.

```
.shadow{ text-shadow: 4px 4px 2px rgb(204, 176, 173) }
```

Border

The CSS property to change the border of an element to CIELCh 74, 10.948, 28.708 is called "border". The border property can be set on classes, ids or directly on the HTML element.

This example shows the color as border, it can be applied via the CSS property "border" or "border-color".

```
.border, #border, table{ border:4px solid rgb(204, 176, 173) }
```

If only the border color should be changed use the property `border-color`.

```
.border{ border-color:rgb(204, 176, 173) }
```

If you want to add a box shadow in that color use:

Here you see how a box with a 4 pixel `rgb(204, 176, 173)` colored shadow looks like.

```
.boxshadow{ -moz-box-shadow:4px 4px 4px  
4px rgb(204, 176, 173); -webkit-box-  
shadow:4px 4px 4px 4px rgb(204, 176, 173);  
box-shadow:4px 4px 4px 4px rgb(204, 176,  
173) }
```

Background

The CSS property to change the background color of an element to CIELCh 74, 10.948, 28.708 is called "background". The background property can be set on classes, ids or directly on the HTML element.

```
.background, #background, body{  
background: rgb(204, 176, 173) }
```

If only the background color should be changed can be used:

```
.background{ background-color: rgb(204,  
176, 173) }
```

This example shows the color as background, it is applied via the CSS property "background".

To optimize and compress your CSS code, you can use our [online CSS compressor and optimizer](#) based on csstidy. If you want to create a linear or radial gradient as background or border, check our [CSS Gradient Generator](#).

Hey! You found this booklet interesting? Support Converting Colors with the new Membership Option!

The pro membership hides all ads, plus gives you double the colors in the color bucket, and more awesome pro features!

[Learn more, Memberships starting at \\$2.50/m!](#)

**Follow me
on Twitter!**

@ConvertingColor