

Converting Colors

CIELCh(74, 11.261, 25.811)

Have a look what the booklet for
CIELCh(74, 11.261, 25.811) contains.

CIELCh(74, 11.263, 25.771)	3
<i>Conversions</i>	4
<i>Details</i>	6
<i>Harmonies</i>	11
<i>Previews</i>	20
<i>Color Blindness Simulation</i>	23
<i>CSS Examples</i>	26

Color

CIELCh(74, 11.263, 25.771)

Conversions

Conversions Part 1

Format	Color
Hex	CCAFAD
RGB	204, 175, 173
RGB Percent	80%, 69%, 68%
CMY	0.1987, 0.3124, 0.3203
CMYK	0.00, 0.14, 0.15, 0.20
HSL	4°, 23%, 74%
HSV	4°, 15%, 80%
XYZ	47.9644, 46.7039, 46.1886
YIQ	183.4430, 17.9260, 5.5260

Conversions

Conversions Part 2

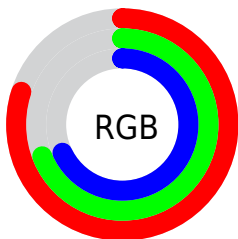
Format	Color
RYB	204, 175, 173
Decimal	13414317
CIELab	74.00, 10.14, 4.90
CIELCh	74, 11.263, 25.771
Yxy	46.7039, 0.3405, 0.3316
Android (android.graphics.Color)	4291604397 (0xFFCCAFAD)
YUV	183.4430, -5.1484, 18.0285
Hunter-Lab	68.3403, 5.6842, 7.7663

Details

The CIELCh color **74, 11.263, 25.771** is a light color, and the websafe version is hex **CC9999**. A complement of this color would be **79, 10.189, 204.761**, and the grayscale version is **75, 0.009, 296.813**.

A 20% lighter version of the original color is **93, 8.868, 29.900**, and **54, 11.278, 26.390** is the 20% darker color. If you saturate the color by 10%, you get **69, 19.457, 26.463**, and if you desaturate by 10%, it is **79, 3.688, 25.199**.

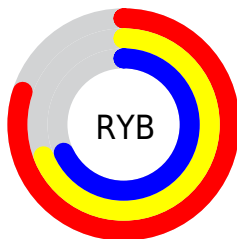
Distribution



Red (80%)

Green (69%)

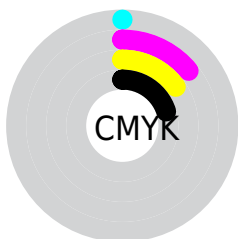
Blue (68%)



Red (80%)

Yellow (69%)

Blue (68%)

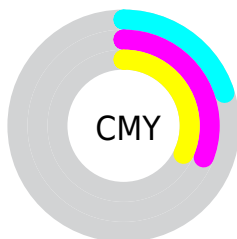


Cyan (0%)

Magenta (14%)

Yellow (15%)

Black (20%)



Cyan (20%)

Magenta (31%)

Yellow (32%)

Brightness & Saturation Gradients

These gradients show how the CIELCh color 74, 11.263, 25.771 changes by changing the brightness by 10 percent. The first figure shows a shift by +10% for each color and the second figure -10%.

Similar to the brightness gradients but the following saturation gradients show a change of the CIELCh color 74, 11.263, 25.771 by changing the saturation by 10% instead.

■ 74, 11.263, 25.771

■ 74, 11.263, 25.771

■ 100, 11.263,
25.771

■ 64, 11.263, 25.771

■ 94, 11.263, 25.771

■ 54, 11.263, 25.771

■ 44, 11.263, 25.771

■ 34, 11.263, 25.771

■ 24, 11.263, 25.771

■ 14, 11.263, 25.771

■ 4, 11.263, 25.771

■ 0, 11.263, 25.771

■ 74, 11.263, 25.771

■ 74, 11.263, 25.771

69, 19.457, 26.463

79, 3.688, 25.199

64, 28.284, 27.371

85, 3.301, 205.179

59, 37.704, 28.584

90, 9.757, 204.824

55, 47.610, 30.184

96, 15.738,
204.511

51, 57.800, 32.237

97, 16.766,
198.393

48, 67.935, 34.731

45, 77.395, 37.435

44, 84.830, 39.620

43, 87.627, 40.614

Harmonies

Complementary

The Complementary color scheme is a pair of colors which are on the opposite of each other on the color wheel.



74, 11.263, 25.771



79, 10.189, 204.761

Rectangle

The Rectangle color scheme consists of four colors that form a rectangle on the color wheel.



74, 11.263, 25.771



74, 11.263, 75.771



74, 11.263, 205.771



74, 11.263, 255.771

Sweetspot

The Sweet Spot groups the original color and five complimentary colors.



74, 11.262, 25.782



97, 4.262, 25.191



74, 19.576, 326.644



51, 2.916, 25.240



0, 0.000, 0.000



53, 0.007, 296.813

Same Dimension

The Same Dimension uses a secret algorithm to generate beautiful new colors.



74, 11.262, 25.782



88, 16.187, 25.971



78, 10.578, 78.686



40, 4.105, 25.452



35, 74.673, 40.659



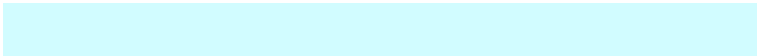
4, 17.240, 22.720

Inverse Universe

The Inverse Universe completely reimagines the original color for something new.



79, 10.189, 204.761



96, 14.330, 204.681



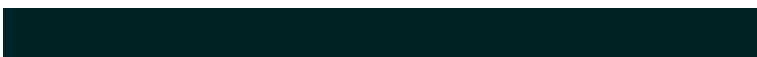
75, 10.301, 262.780



42, 3.865, 204.947



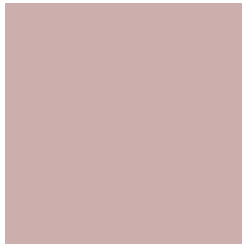
58, 33.424, 207.255



12, 12.631, 204.844

Previews

White Background



This preview shows how the CIELCh color 74, 11.263, 25.771 looks on a white background.

Color Contrast Check

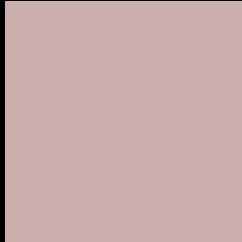
Large Text (above 18pt) WCAG AA × Fail

Any Text WCAG AA × Fail

Large Text (above 18pt) WCAG AAA × Fail

Any Text WCAG AAA × Fail

Black Background



This preview shows how the CIE LCh color 74, 11.263, 25.771 looks on a black background.

Color Contrast Check

Large Text (above 18pt) WCAG AA ✓ Pass

Any Text WCAG AA ✓ Pass

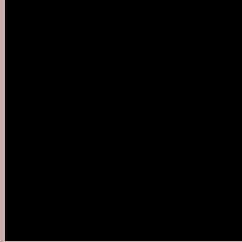
Large Text (above 18pt) WCAG AAA ✓ Pass

Any Text WCAG AAA ✓ Pass

If you want to check with other color combinations, try the [Color Contrast Checker](#).

CIELCh 74, 11.263, 25.771

Background



This preview shows how black text looks on a background with the CIELCh color 74, 11.263, 25.771.



This preview shows how white text looks on a background with the CIELCh color 74, 11.263, 25.771.

Color Blindness Simulation

Color vision deficiency is a very complex topic, and I could not describe the different causes any better than Wikipedia does, so if you want to learn more, you should check out their [article about color blindness](#).

Dichromacy



Original Color


74, 11.263, 25.771

Protanopia

74, 3.113, 63.223

Deuteranopia

74, 10.557, 28.992



Tritanopia
74, 14.530, 349.398

Trichromacy



Original Color
74, 11.263, 25.771

Protanomaly
74, 5.562, 36.619

Deuteranomaly
74, 10.557, 28.992

Tritanomaly
74, 12.531, 0.392

Monochromacy



Original Color
74, 11.263, 25.771

Achromatopsia
75, 0.009, 296.813

Achromatomaly
74, 3.802, 27.717

CSS Examples

Text

The CSS property to change the color of the text to CIELCh 74, 11.263, 25.771 is called "color". The color property can be set on classes, ids or directly on the HTML element.

This example shows how text in the color `rgb(204, 175, 173)` looks like.

```
.text, #text, p{  
    color:rgb(204, 175, 173)  
}
```

If you want to add a text shadow in that color use the text-shadow property, you can generate a text shadow directly with our [CSS Text Shadow Generator](#).

Here you see how black text with a 4 pixel rgb(204, 175, 173) colored shadow looks like.

```
.shadow{ text-shadow: 4px 4px 2px rgb(204, 175, 173) }
```

Border

The CSS property to change the border of an element to CIELCh 74, 11.263, 25.771 is called "border". The border property can be set on classes, ids or directly on the HTML element.

This example shows the color as border, it can be applied via the CSS property "border" or "border-color".

```
.border, #border, table{ border:4px solid rgb(204, 175, 173) }
```

If only the border color should be changed use the property `border-color`.

```
.border{ border-color:rgb(204, 175, 173) }
```

If you want to add a box shadow in that color use:

Here you see how a box with a 4 pixel `rgb(204, 175, 173)` colored shadow looks like.

```
.boxshadow{ -moz-box-shadow:4px 4px 4px  
4px rgb(204, 175, 173); -webkit-box-  
shadow:4px 4px 4px 4px rgb(204, 175, 173);  
box-shadow:4px 4px 4px 4px rgb(204, 175,  
173) }
```

Background

The CSS property to change the background color of an element to CIELCh 74, 11.263, 25.771 is called "background". The background property can be set on classes, ids or directly on the HTML element.

```
.background, #background, body{  
background: rgb(204, 175, 173) }
```

If only the background color should be changed can be used:

```
.background{ background-color: rgb(204,  
175, 173) }
```

This example shows the color as background, it is applied via the CSS property "background".

To optimize and compress your CSS code, you can use our [online CSS compressor and optimizer](#) based on csstidy. If you want to create a linear or radial gradient as background or border, check our [CSS Gradient Generator](#).

Hey! You found this booklet interesting? Support Converting Colors with the new Membership Option!

The pro membership hides all ads, plus gives you double the colors in the color bucket, and more awesome pro features!

[Learn more, Memberships starting at \\$2.50/m!](#)

**Follow me
on Twitter!**

@ConvertingColor