

Converting Colors

CIELCh(74, 11.360, 36.668)

Have a look what the booklet for
CIELCh(74, 11.360, 36.668) contains.

CIELCh(74, 11.374, 36.669)	3
<i>Conversions</i>	4
<i>Details</i>	6
<i>Harmonies</i>	11
<i>Previews</i>	20
<i>Color Blindness Simulation</i>	23
<i>CSS Examples</i>	26

Color

CIELCh(74, 11.374, 36.669)

Conversions

Conversions Part 1

Format	Color
Hex	CCB0AA
RGB	204, 176, 170
RGB Percent	80%, 69%, 67%
CMY	0.2006, 0.3104, 0.3339
CMYK	0.00, 0.14, 0.17, 0.20
HSL	11°, 25%, 73%
HSV	11°, 17%, 80%
XYZ	47.5968, 46.7039, 44.4627
YIQ	183.6880, 18.6140, 4.0700

Conversions

Conversions Part 2

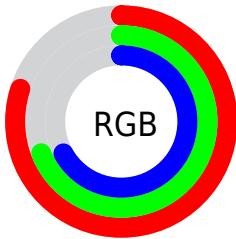
Format	Color
R _Y B	204, 177, 170
Decimal	13414570
CIE Lab	74.00, 9.12, 6.79
CIE LCh	74, 11.374, 36.669
Yxy	46.7039, 0.3430, 0.3366
Android (android.graphics.Color)	4291604650 (0xFFCCB0AA)
YUV	183.6880, -6.7482, 17.8136
Hunter-Lab	68.3403, 4.7239, 9.2637

Details

The CIELCh color **74, 11.374, 36.669** is a light color, and the websafe version is hex **CC9999**. A complement of this color would be **78, 10.193, 217.218**, and the grayscale version is **75, 0.009, 296.813**.

A 20% lighter version of the original color is **94, 9.145, 42.940**, and **54, 11.275, 35.160** is the 20% darker color. If you saturate the color by 10%, you get **69, 18.970, 36.822**, and if you desaturate by 10%, it is **79, 4.368, 36.611**.

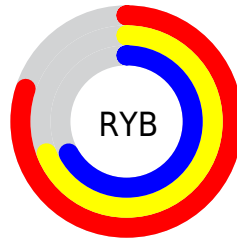
Distribution



Red (80%)

Green (69%)

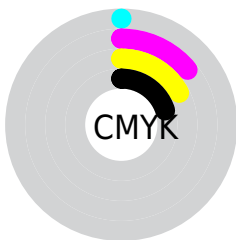
Blue (67%)



Red (80%)

Yellow (69%)

Blue (67%)

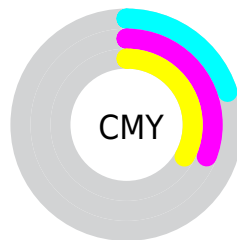


Cyan (0%)

Magenta (14%)

Yellow (17%)

Black (20%)



Cyan (20%)

Magenta (31%)

Yellow (33%)

Brightness & Saturation Gradients

These gradients show how the CIELCh color 74, 11.374, 36.669 changes by changing the brightness by 10 percent. The first figure shows a shift by +10% for each color and the second figure -10%.

Similar to the brightness gradients but the following saturation gradients show a change of the CIELCh color 74, 11.374, 36.669 by changing the saturation by 10% instead.

■ 74, 11.374, 36.669

■ 74, 11.374, 36.669

■ 100, 11.374,
36.669

■ 64, 11.374, 36.669

■ 94, 11.374, 36.669

■ 54, 11.374, 36.669

■ 44, 11.374, 36.669

■ 34, 11.374, 36.669

■ 24, 11.374, 36.669

■ 14, 11.374, 36.669

■ 4, 11.374, 36.669

■ 0, 11.374, 36.669

■ 74, 11.374, 36.669

■ 74, 11.374, 36.669

69, 18.970, 36.822

79, 4.368, 36.611

65, 27.192, 37.122

84, 2.093, 217.111

61, 36.045, 37.631

88, 8.065, 217.094

56, 45.481, 38.389

93, 13.604,
217.299

53, 55.366, 39.413

97, 16.920,
198.383

50, 65.400, 40.648

47, 74.916, 41.844

45, 82.548, 42.412

44, 84.796, 42.678

Harmonies

Complementary

The Complementary color scheme is a pair of colors which are on the opposite of each other on the color wheel.



74, 11.374, 36.669



78, 10.193, 217.218

Rectangle

The Rectangle color scheme consists of four colors that form a rectangle on the color wheel.



74, 11.374, 36.669



74, 11.374, 86.669



74, 11.374, 216.669



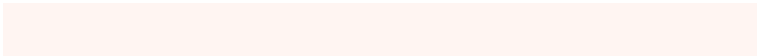
74, 11.374, 266.669

Sweetspot

The Sweet Spot groups the original color and five complimentary colors.



74, 11.373, 36.681



97, 3.898, 36.581



73, 19.811, 330.392



51, 2.667, 36.597



0, 0.000, 0.000



53, 0.007, 296.813

Same Dimension

The Same Dimension uses a secret algorithm to generate beautiful new colors.



74, 11.373, 36.681



89, 16.605, 36.717



78, 12.847, 89.019



40, 3.756, 36.635



36, 72.351, 42.986



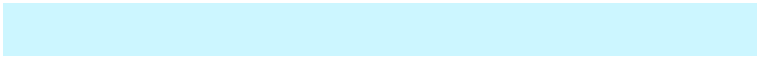
5, 16.209, 29.106

Inverse Universe

The Inverse Universe completely reimagines the original color for something new.



78, 10.193, 217.218



94, 14.502, 217.339



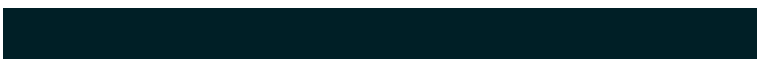
74, 12.806, 273.442



42, 3.540, 217.053



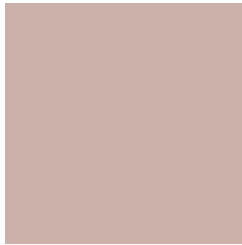
52, 31.568, 230.135



10, 11.784, 222.301

Previews

White Background



This preview shows how the CIELCh color 74, 11.374, 36.669 looks on a white background.

Color Contrast Check

Large Text (above 18pt) WCAG AA × Fail

Any Text WCAG AA × Fail

Large Text (above 18pt) WCAG AAA × Fail

Any Text WCAG AAA × Fail

Black Background



This preview shows how the CIELCh color 74, 11.374, 36.669 looks on a black background.

Color Contrast Check

Large Text (above 18pt) WCAG AA ✓ Pass

Any Text WCAG AA ✓ Pass

Large Text (above 18pt) WCAG AAA ✓ Pass

Any Text WCAG AAA ✓ Pass

If you want to check with other color combinations, try the [Color Contrast Checker](#).

CIELCh 74, 11.374, 36.669

Background



This preview shows how black text looks on a background with the CIELCh color 74, 11.374, 36.669.



This preview shows how white text looks on a background with the CIELCh color 74, 11.374, 36.669.

Color Blindness Simulation

Color vision deficiency is a very complex topic, and I could not describe the different causes any better than Wikipedia does, so if you want to learn more, you should check out their [article about color blindness](#).

Dichromacy



Original Color


74, 11.374, 36.669

Protanopia

74, 4.867, 81.743

Deuteranopia

74, 11.374, 36.669



Tritanopia
74, 14.530, 349.398

Trichromacy



Original Color
74, 11.374, 36.669

Protanomaly
74, 6.559, 54.778

Deuteranomaly
74, 11.374, 36.669

Tritanomaly
74, 12.377, 2.756

Monochromacy



Original Color
74, 11.374, 36.669

Achromatopsia
75, 0.009, 296.813

Achromatomaly
74, 3.918, 35.522

CSS Examples

Text

The CSS property to change the color of the text to CIELCh 74, 11.374, 36.669 is called "color". The color property can be set on classes, ids or directly on the HTML element.

This example shows how text in the color `rgb(204, 176, 170)` looks like.

```
.text, #text, p{  
    color:rgb(204, 176, 170)  
}
```

If you want to add a text shadow in that color use the text-shadow property, you can generate a text shadow directly with our [CSS Text Shadow Generator](#).

Here you see how black text with a 4 pixel rgb(204, 176, 170) colored shadow looks like.

```
.shadow{ text-shadow: 4px 4px 2px rgb(204, 176, 170) }
```

Border

The CSS property to change the border of an element to CIELCh 74, 11.374, 36.669 is called "border". The border property can be set on classes, ids or directly on the HTML element.

This example shows the color as border, it can be applied via the CSS property "border" or "border-color".

```
.border, #border, table{ border:4px solid rgb(204, 176, 170) }
```

If only the border color should be changed use the property `border-color`.

```
.border{ border-color:rgb(204, 176, 170) }
```

If you want to add a box shadow in that color use:

Here you see how a box with a 4 pixel `rgb(204, 176, 170)` colored shadow looks like.

```
.boxshadow{ -moz-box-shadow:4px 4px 4px  
4px rgb(204, 176, 170); -webkit-box-  
shadow:4px 4px 4px 4px rgb(204, 176, 170);  
box-shadow:4px 4px 4px 4px rgb(204, 176,  
170) }
```

Background

The CSS property to change the background color of an element to CIELCh 74, 11.374, 36.669 is called "background". The background property can be set on classes, ids or directly on the HTML element.

```
.background, #background, body{  
background: rgb(204, 176, 170) }
```

If only the background color should be changed can be used:

```
.background{ background-color: rgb(204,  
176, 170) }
```

This example shows the color as background, it is applied via the CSS property "background".

To optimize and compress your CSS code, you can use our [online CSS compressor and optimizer](#) based on csstidy. If you want to create a linear or radial gradient as background or border, check our [CSS Gradient Generator](#).

Hey! You found this booklet interesting? Support Converting Colors with the new Membership Option!

The pro membership hides all ads, plus gives you double the colors in the color bucket, and more awesome pro features!

[Learn more, Memberships starting at \\$2.50/m!](#)

**Follow me
on Twitter!**

@ConvertingColor