

Converting Colors

CIELCh(74, 12.470, 70.225)

Have a look what the booklet for
CIELCh(74, 12.470, 70.225) contains.

CIELCh(74, 12.280, 71.664)	3
<i>Conversions</i>	4
<i>Details</i>	6
<i>Harmonies</i>	11
<i>Previews</i>	20
<i>Color Blindness Simulation</i>	23
<i>CSS Examples</i>	26

Color

CIELCh(74, 12.280, 71.664)

Conversions

Conversions Part 1

Format	Color
Hex	C6B3A1
RGB	198, 179, 161
RGB Percent	78%, 70%, 63%
CMY	0.2243, 0.2988, 0.3694
CMYK	0.00, 0.10, 0.19, 0.22
HSL	29°, 24%, 70%
HSV	29°, 19%, 78%
XYZ	45.7301, 46.7039, 40.2319
YIQ	182.6290, 17.1020, -1.5700

Conversions

Conversions Part 2

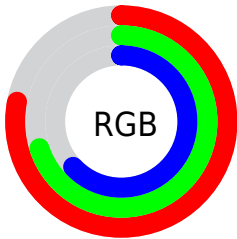
Format	Color
RYB	198, 196, 161
Decimal	13022113
CIELab	74.00, 3.86, 11.66
CIElCh	74, 12.280, 71.664
Yxy	46.7039, 0.3447, 0.3520
Android (android.graphics.Color)	4291212193 (0xFFC6B3A1)
YUV	182.6290, -10.6631, 13.4804
Hunter-Lab	68.3403, -0.1516, 12.9342

Details

The CIELCh color **74, 12.280, 71.664** is a light color, and the websafe version is hex **CCCCCC**. A complement of this color would be **72, 11.649, 256.581**, and the grayscale version is **74, 0.009, 296.813**.

A 20% lighter version of the original color is **94, 12.251, 72.118**, and **54, 12.469, 70.974** is the 20% darker color. If you saturate the color by 10%, you get **71, 19.320, 70.463**, and if you desaturate by 10%, it is **77, 5.575, 72.850**.

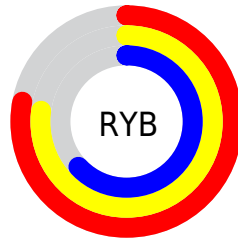
Distribution



Red (78%)

Green (70%)

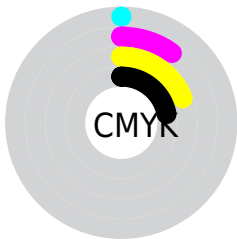
Blue (63%)



Red (78%)

Yellow (77%)

Blue (63%)

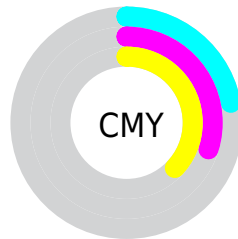


Cyan (0%)

Magenta (10%)

Yellow (19%)

Black (22%)



Cyan (22%)

Magenta (30%)

Yellow (37%)

Brightness & Saturation Gradients

These gradients show how the CIELCh color 74, 12.280, 71.664 changes by changing the brightness by 10 percent. The first figure shows a shift by +10% for each color and the second figure -10%.

Similar to the brightness gradients but the following saturation gradients show a change of the CIELCh color 74, 12.280, 71.664 by changing the saturation by 10% instead.

■ 74, 12.280, 71.664

■ 74, 12.280, 71.664

■ 100, 12.280,
71.664

■ 64, 12.280, 71.664

■ 94, 12.280, 71.664

■ 54, 12.280, 71.664

■ 44, 12.280, 71.664

■ 34, 12.280, 71.664

■ 24, 12.280, 71.664

■ 14, 12.280, 71.664

■ 4, 12.280, 71.664

■ 0, 12.280, 71.664

■ 74, 12.280, 71.664

■ 74, 12.280, 71.664

71, 19.320, 70.463

77, 5.575, 72.850

68, 26.708, 69.239

80, 0.821, 254.566

65, 34.429, 68.007

83, 6.937, 255.327

62, 42.417, 66.756

87, 12.803,
256.432

60, 50.500, 65.444

90, 16.546,
252.326

57, 58.304, 63.964

55, 65.122, 62.093

92, 15.619,
229.173

53, 70.220, 59.607

95, 17.206,
207.219

52, 70.878, 59.310

96, 18.772,
198.265

Harmonies

Complementary

The Complementary color scheme is a pair of colors which are on the opposite of each other on the color wheel.



74, 12.280, 71.664



72, 11.649, 256.581

Rectangle

The Rectangle color scheme consists of four colors that form a rectangle on the color wheel.



74, 12.280, 71.664



74, 12.280, 121.664



74, 12.280, 251.664



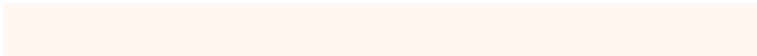
74, 12.280, 301.664

Sweetspot

The Sweet Spot groups the original color and five complimentary colors.



74, 12.280, 71.675



98, 4.693, 73.134



70, 17.436, 344.344



52, 3.118, 73.064



0, 0.000, 0.000



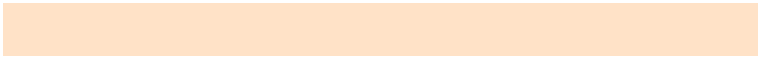
53, 0.007, 296.813

Same Dimension

The Same Dimension uses a secret algorithm to generate beautiful new colors.



74, 12.280, 71.675



92, 17.915, 71.237



79, 19.279, 107.686



40, 3.656, 72.773



43, 61.265, 59.885



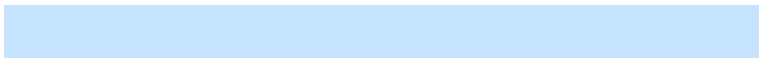
7, 12.950, 55.862

Inverse Universe

The Inverse Universe completely reimagines the original color for something new.



72, 11.649, 256.581



89, 16.799, 257.185



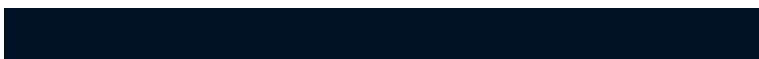
67, 20.093, 291.609



40, 3.570, 255.216



36, 49.888, 282.255



5, 13.804, 269.122

Previews

White Background



This preview shows how the CIELCh color 74, 12.280, 71.664 looks on a white background.

Color Contrast Check

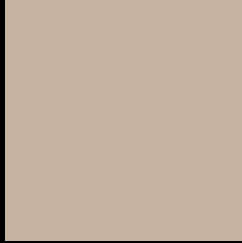
Large Text (above 18pt) WCAG AA × Fail

Any Text WCAG AA × Fail

Large Text (above 18pt) WCAG AAA × Fail

Any Text WCAG AAA × Fail

Black Background



This preview shows how the CIELCh color 74, 12.280, 71.664 looks on a black background.

Color Contrast Check

Large Text (above 18pt) WCAG AA ✓ Pass

Any Text WCAG AA ✓ Pass

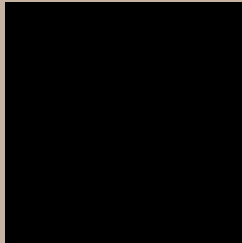
Large Text (above 18pt) WCAG AAA ✓ Pass

Any Text WCAG AAA ✓ Pass

If you want to check with other color combinations, try the [Color Contrast Checker](#).

CIELCh 74, 12.280, 71.664

Background



This preview shows how black text looks on a background with the CIELCh color 74, 12.280, 71.664.



This preview shows how white text looks on a background with the CIELCh color 74, 12.280, 71.664.

Color Blindness Simulation

Color vision deficiency is a very complex topic, and I could not describe the different causes any better than Wikipedia does, so if you want to learn more, you should check out their [article about color blindness](#).

Dichromacy



Original Color

74, 12.280, 71.664

Protanopia

74, 10.821, 90.225

Deuteranopia

74, 14.842, 50.656



Tritanopia
74, 12.017, 344.713

Trichromacy



Original Color
74, 12.280, 71.664

Protanomaly
74, 10.961, 81.554

Deuteranomaly
74, 13.783, 55.848

Tritanomaly
74, 9.216, 13.443

Monochromacy



Original Color
74, 12.280, 71.664

Achromatopsia
74, 0.009, 296.813

Achromatomaly
74, 4.603, 74.448

CSS Examples

Text

The CSS property to change the color of the text to CIELCh 74, 12.280, 71.664 is called "color". The color property can be set on classes, ids or directly on the HTML element.

This example shows how text in the color `rgb(198, 179, 161)` looks like.

```
.text, #text, p{  
    color:rgb(198, 179, 161)  
}
```

If you want to add a text shadow in that color use the text-shadow property, you can generate a text shadow directly with our [CSS Text Shadow Generator](#).

Here you see how black text with a 4 pixel rgb(198, 179, 161) colored shadow looks like.

```
.shadow{ text-shadow: 4px 4px 2px rgb(198, 179, 161) }
```

Border

The CSS property to change the border of an element to CIELCh 74, 12.280, 71.664 is called "border". The border property can be set on classes, ids or directly on the HTML element.

This example shows the color as border, it can be applied via the CSS property "border" or "border-color".

```
.border, #border, table{ border:4px solid rgb(198, 179, 161) }
```

If only the border color should be changed use the property `border-color`.

```
.border{ border-color:rgb(198, 179, 161) }
```

If you want to add a box shadow in that color use:

Here you see how a box with a 4 pixel `rgb(198, 179, 161)` colored shadow looks like.

```
.boxshadow{ -moz-box-shadow:4px 4px 4px  
4px rgb(198, 179, 161); -webkit-box-  
shadow:4px 4px 4px 4px rgb(198, 179, 161);  
box-shadow:4px 4px 4px 4px rgb(198, 179,  
161) }
```

Background

The CSS property to change the background color of an element to CIELCh 74, 12.280, 71.664 is called "background". The background property can be set on classes, ids or directly on the HTML element.

```
.background, #background, body{  
background: rgb(198, 179, 161) }
```

If only the background color should be changed can be used:

```
.background{ background-color: rgb(198,  
179, 161) }
```

This example shows the color as background, it is applied via the CSS property "background".

To optimize and compress your CSS code, you can use our [online CSS compressor and optimizer](#) based on csstidy. If you want to create a linear or radial gradient as background or border, check our [CSS Gradient Generator](#).

Hey! You found this booklet interesting? Support Converting Colors with the new Membership Option!

The pro membership hides all ads, plus gives you double the colors in the color bucket, and more awesome pro features!

[Learn more, Memberships starting at \\$2.50/m!](#)

**Follow me
on Twitter!**

@ConvertingColor