

# Converting Colors

CIELCh(74, 13.405, 71.134)

Have a look what the booklet for  
CIELCh(74, 13.405, 71.134) contains.

<b>CIELCh(74, 13.234, 70.252)</b> .....	3
<i><b>Conversions</b></i> .....	4
<i><b>Details</b></i> .....	6
<i><b>Harmonies</b></i> .....	11
<i><b>Previews</b></i> .....	20
<i><b>Color Blindness Simulation</b></i> .....	23
<i><b>CSS Examples</b></i> .....	26

# Color

**CIELCh(74, 13.234, 70.252)**

# Conversions

## Conversions Part 1

Format	Color
Hex	C7B29F
RGB	199, 178, 159
RGB Percent	78%, 70%, 62%
CMY	0.2181, 0.3005, 0.3750
CMYK	0.00, 0.11, 0.20, 0.22
HSL	29°, 26%, 70%
HSV	29°, 20%, 78%
XYZ	45.9435, 46.7039, 39.5635
YIQ	182.1130, 18.6150, -1.4570

# Conversions

## Conversions Part 2

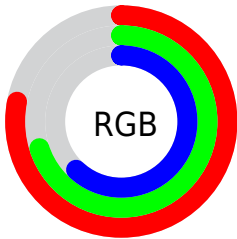
<b>Format</b>	<b>Color</b>
<b>RYB</b>	199, 195, 159
Decimal	13087391
CIELab	74.00, 4.47, 12.46
CIELCh	74, 13.234, 70.252
Yxy	46.7039, 0.3475, 0.3533
Android (android.graphics.Color)	4291277471 (0xFFC7B29F)
YUV	182.1130, -11.3947, 14.8099
Hunter-Lab	68.3403, 0.4057, 13.5141

# Details

The CIELCh color **74, 13.234, 70.252** is a light color, and the websafe version is hex **CCCCCC**. A complement of this color would be **72, 12.451, 255.493**, and the grayscale version is **74, 0.009, 296.813**.

A 20% lighter version of the original color is **94, 12.909, 72.090**, and **54, 13.056, 67.996** is the 20% darker color. If you saturate the color by 10%, you get **71, 20.348, 69.072**, and if you desaturate by 10%, it is **77, 6.473, 71.426**.

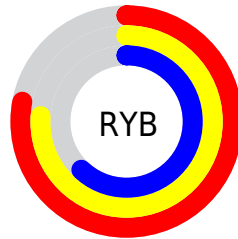
# Distribution



Red (78%)

Green (70%)

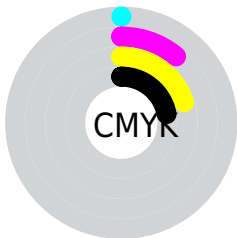
Blue (62%)



Red (78%)

Yellow (76%)

Blue (62%)

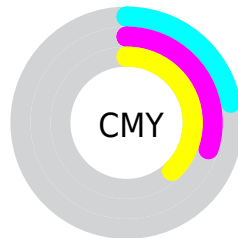


Cyan (0%)

Magenta (11%)

Yellow (20%)

Black (22%)



Cyan (22%)

Magenta (30%)

Yellow (38%)

# Brightness & Saturation Gradients


These gradients show how the CIELCh color 74, 13.234, 70.252 changes by changing the brightness by 10 percent. The first figure shows a shift by +10% for each color and the second figure -10%.

Similar to the brightness gradients but the following saturation gradients show a change of the CIELCh color 74, 13.234, 70.252 by changing the saturation by 10% instead.



 74, 13.234, 70.252

 74, 13.234, 70.252

 100, 13.234,  
70.252

 64, 13.234, 70.252

 94, 13.234, 70.252

 54, 13.234, 70.252

 44, 13.234, 70.252

 34, 13.234, 70.252

 24, 13.234, 70.252

 14, 13.234, 70.252

 4, 13.234, 70.252

 0, 13.234, 70.252

 74, 13.234, 70.252

 74, 13.234, 70.252

71, 20.348, 69.072

77, 6.473, 71.426

68, 27.826, 67.876

80, 0.038, 62.392

65, 35.654, 66.677

84, 6.103, 253.882

62, 43.756, 65.461

87, 11.980,  
254.975

59, 51.944, 64.180

90, 16.007,  
251.283

57, 59.807, 62.713

54, 66.579, 60.809

93, 15.263,  
226.662

52, 71.688, 58.371

96, 17.215,  
204.137

96, 18.287,  
198.296

# Harmonies

# Complementary

The Complementary color scheme is a pair of colors which are on the opposite of each other on the color wheel.



74, 13.234, 70.252



72, 12.451, 255.493

# Rectangle

The Rectangle color scheme consists of four colors that form a rectangle on the color wheel.



74, 13.234, 70.252



74, 13.234, 120.252



74, 13.234, 250.252



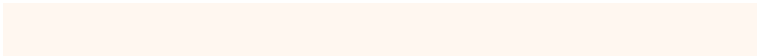
74, 13.234, 300.252

# Sweetspot

The Sweet Spot groups the original color and five complimentary colors.



74, 13.234, 70.263



98, 4.660, 71.858



70, 19.061, 343.579



52, 3.096, 71.789



0, 0.000, 0.000



53, 0.007, 296.813

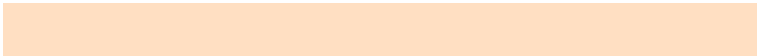


# Same Dimension

The Same Dimension uses a secret algorithm to generate beautiful new colors.



74, 13.234, 70.263



91, 19.537, 69.755



79, 20.481, 106.832



40, 3.631, 71.504



43, 61.572, 58.969



7, 12.955, 54.516



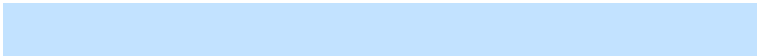


# Inverse Universe

The Inverse Universe completely reimagines the original color for something new.



72, 12.451, 255.493



88, 18.113, 256.221



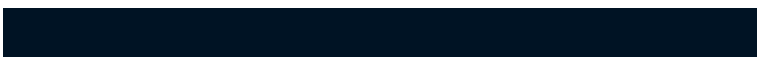
67, 21.383, 291.125



40, 3.540, 253.920



36, 48.743, 281.037

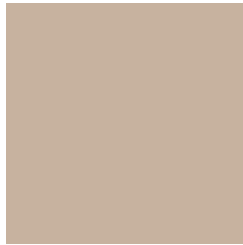


5, 13.619, 268.049



# Previews

## White Background



This preview shows how the CIELCh color 74, 13.234, 70.252 looks on a white background.

## Color Contrast Check

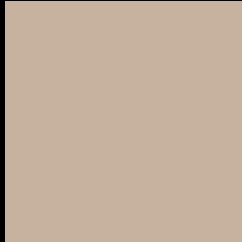
Large Text (above 18pt) WCAG AA × Fail

Any Text WCAG AA × Fail

Large Text (above 18pt) WCAG AAA × Fail

Any Text WCAG AAA × Fail

# Black Background



This preview shows how the CIELCh color 74, 13.234, 70.252 looks on a black background.

## Color Contrast Check

Large Text (above 18pt) WCAG AA ✓ Pass

Any Text WCAG AA ✓ Pass

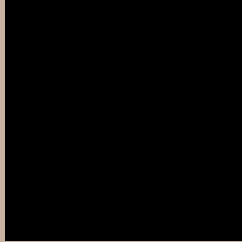
Large Text (above 18pt) WCAG AAA ✓ Pass

Any Text WCAG AAA ✓ Pass

If you want to check with other color combinations, try the [Color Contrast Checker](#).

# CIELCh 74, 13.234, 70.252

## Background



This preview shows how black text looks on a background with the CIELCh color 74, 13.234, 70.252.



This preview shows how white text looks on a background with the CIELCh color 74, 13.234, 70.252.

# Color Blindness Simulation

Color vision deficiency is a very complex topic, and I could not describe the different causes any better than Wikipedia does, so if you want to learn more, you should check out their [article about color blindness](#).

## Dichromacy



### Original Color

74, 13.234, 70.252

### Protanopia

74, 11.335, 91.026

### Deuteranopia

74, 15.500, 51.536



**Tritanopia**  
74, 13.250, 345.798



# Trichromacy



**Original Color**  
74, 13.234, 70.252

**Protanomaly**  
74, 11.937, 83.774

**Deuteranomaly**  
74, 14.455, 56.555

**Tritanomaly**  
74, 9.988, 14.041

# Monochromacy



**Original Color**  
74, 13.234, 70.252

**Achromatopsia**  
74, 0.009, 296.813

**Achromatomaly**  
74, 4.603, 74.448

# CSS Examples

## Text

The CSS property to change the color of the text to CIELCh 74, 13.234, 70.252 is called "color". The color property can be set on classes, ids or directly on the HTML element.

This example shows how text in the color `rgb(199, 178, 159)` looks like.

```
.text, #text, p{  
    color:rgb(199, 178, 159)  
}
```

If you want to add a text shadow in that color use the text-shadow property, you can generate a text shadow directly with our [CSS Text Shadow Generator](#).

Here you see how black text with a 4 pixel rgb(199, 178, 159) colored shadow looks like.

```
.shadow{ text-shadow: 4px 4px 2px rgb(199, 178, 159) }
```

## Border

The CSS property to change the border of an element to CIELCh 74, 13.234, 70.252 is called "border". The border property can be set on classes, ids or directly on the HTML element.

This example shows the color as border, it can be applied via the CSS property "border" or "border-color".

```
.border, #border, table{ border:4px solid rgb(199, 178, 159) }
```

If only the border color should be changed use the property `border-color`.

```
.border{ border-color:rgb(199, 178, 159) }
```

If you want to add a box shadow in that color use:

Here you see how a box with a 4 pixel `rgb(199, 178, 159)` colored shadow looks like.

```
.boxshadow{ -moz-box-shadow:4px 4px 4px 4px rgb(199, 178, 159); -webkit-box-shadow:4px 4px 4px 4px rgb(199, 178, 159); box-shadow:4px 4px 4px 4px rgb(199, 178, 159) }
```

# Background

The CSS property to change the background color of an element to CIELCh 74, 13.234, 70.252 is called "background". The background property can be set on classes, ids or directly on the HTML element.

```
.background, #background, body{  
background: rgb(199, 178, 159) }
```

If only the background color should be changed can be used:

```
.background{ background-color: rgb(199,  
178, 159) }
```

This example shows the color as background, it is applied via the CSS property "background".

To optimize and compress your CSS code, you can use our [online CSS compressor and optimizer](#) based on csstidy. If you want to create a linear or radial gradient as background or border, check our [CSS Gradient Generator](#).

Hey! You found this booklet interesting? Support Converting Colors with the new Membership Option!

The pro membership hides all ads, plus gives you double the colors in the color bucket, and more awesome pro features!

**[Learn more, Memberships starting at \\$2.50/m!](#)**

**Follow me  
on Twitter!**

@ConvertingColor