

Converting Colors

CIELCh(74, 13.551, 22.604)

Have a look what the booklet for
CIELCh(74, 13.551, 22.604) contains.

CIELCh(74, 13.586, 22.786)	3
<i>Conversions</i>	4
<i>Details</i>	6
<i>Harmonies</i>	11
<i>Previews</i>	20
<i>Color Blindness Simulation</i>	23
<i>CSS Examples</i>	26

Color

CIELCh(74, 13.586, 22.786)

Conversions

Conversions Part 1

Format	Color
Hex	D1AEAD
RGB	209, 174, 173
RGB Percent	82%, 68%, 68%
CMY	0.1814, 0.3186, 0.3225
CMYK	0.00, 0.17, 0.17, 0.18
HSL	2°, 28%, 75%
HSV	2°, 17%, 82%
XYZ	48.8310, 46.7039, 45.8530
YIQ	184.3510, 21.1810, 7.1090

Conversions

Conversions Part 2

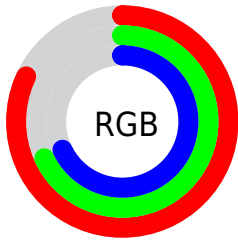
Format	Color
R_{YB}	209, 174, 173
Decimal	13741741
CIE _{Lab}	74.00, 12.53, 5.26
CIE _{LCh}	74, 13.586, 22.786
Yxy	46.7039, 0.3454, 0.3303
Android (android.graphics.Color)	4291931821 (0xFFD1AEAD)
YUV	184.3510, -5.5960, 21.6172
Hunter-Lab	68.3403, 7.9475, 8.0575

Details

The CIELCh color **74, 13.586, 22.786** is a light color, and the websafe version is hex **CC9999**. A complement of this color would be **81, 12.129, 201.098**, and the grayscale version is **75, 0.009, 296.813**.

A 20% lighter version of the original color is **93, 9.156, 26.385**, and **54, 13.345, 23.294** is the 20% darker color. If you saturate the color by 10%, you get **69, 22.329, 23.683**, and if you desaturate by 10%, it is **80, 5.481, 22.072**.

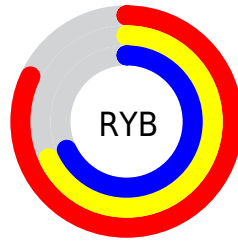
Distribution



Red (82%)

Green (68%)

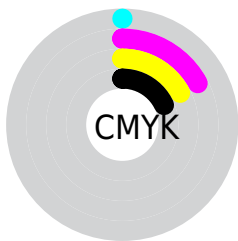
Blue (68%)



Red (82%)

Yellow (68%)

Blue (68%)

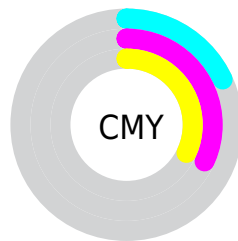


Cyan (0%)

Magenta (17%)

Yellow (17%)

Black (18%)



Cyan (18%)

Magenta (32%)

Yellow (32%)

Brightness & Saturation Gradients

These gradients show how the CIELCh color 74, 13.586, 22.786 changes by changing the brightness by 10 percent. The first figure shows a shift by +10% for each color and the second figure -10%.

Similar to the brightness gradients but the following saturation gradients show a change of the CIELCh color 74, 13.586, 22.786 by changing the saturation by 10% instead.

74, 13.586, 22.786

74, 13.586, 22.786

100, 13.586,
22.786

64, 13.586, 22.786

94, 13.586, 22.786

54, 13.586, 22.786

44, 13.586, 22.786

34, 13.586, 22.786

24, 13.586, 22.786

14, 13.586, 22.786

4, 13.586, 22.786

0, 13.586, 22.786

74, 13.586, 22.786

74, 13.586, 22.786

69, 22.329, 23.683

80, 5.481, 22.072

63, 31.700, 24.843

85, 2.006, 201.960

58, 41.616, 26.368

91, 8.925, 201.357

54, 51.912, 28.355

97, 15.370,
198.612

50, 62.318, 30.877

97, 15.393,
198.481

47, 72.425, 33.901

45, 81.499, 37.082

44, 88.043, 39.551

44, 89.557, 40.252

Harmonies

Complementary

The Complementary color scheme is a pair of colors which are on the opposite of each other on the color wheel.



74, 13.586, 22.786



81, 12.129, 201.098

Rectangle

The Rectangle color scheme consists of four colors that form a rectangle on the color wheel.



74, 13.586, 22.786



74, 13.586, 72.786



74, 13.586, 202.786



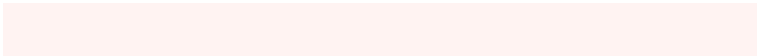
74, 13.586, 252.786

Sweetspot

The Sweet Spot groups the original color and five complimentary colors.



74, 13.584, 22.795



97, 4.414, 21.904



75, 23.161, 325.825



51, 3.020, 21.962



0, 0.000, 0.000



53, 0.007, 296.813

Same Dimension

The Same Dimension uses a secret algorithm to generate beautiful new colors.



74, 13.584, 22.795



86, 19.778, 23.123



78, 11.999, 75.031



41, 4.339, 22.225



35, 76.072, 40.215



4, 19.678, 20.828

Inverse Universe

The Inverse Universe completely reimagines the original color for something new.



81, 12.129, 201.098



96, 17.158, 200.940



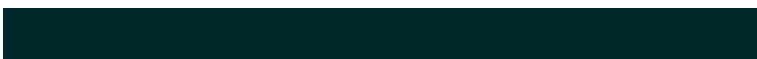
76, 11.530, 259.655



43, 4.086, 201.455



61, 35.328, 200.824



14, 13.606, 199.934

Previews

White Background



This preview shows how the CIELCh color 74, 13.586, 22.786 looks on a white background.

Color Contrast Check

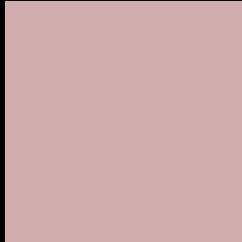
Large Text (above 18pt) WCAG AA × Fail

Any Text WCAG AA × Fail

Large Text (above 18pt) WCAG AAA × Fail

Any Text WCAG AAA × Fail

Black Background



This preview shows how the CIE LCh color 74, 13.586, 22.786 looks on a black background.

Color Contrast Check

Large Text (above 18pt) WCAG AA ✓ Pass

Any Text WCAG AA ✓ Pass

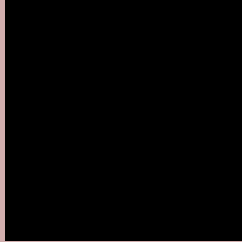
Large Text (above 18pt) WCAG AAA ✓ Pass

Any Text WCAG AAA ✓ Pass

If you want to check with other color combinations, try the [Color Contrast Checker](#).

CIELCh 74, 13.586, 22.786

Background



This preview shows how black text looks on a background with the CIELCh color 74, 13.586, 22.786.



This preview shows how white text looks on a background with the CIELCh color 74, 13.586, 22.786.

Color Blindness Simulation

Color vision deficiency is a very complex topic, and I could not describe the different causes any better than Wikipedia does, so if you want to learn more, you should check out their [article about color blindness](#).

Dichromacy



Original Color

74, 13.586, 22.786

Protanopia

74, 3.113, 63.223

Deuteranopia

74, 10.676, 31.812



Tritanopia
74, 15.981, 354.876

Trichromacy



Original Color
74, 13.586, 22.786

Protanomaly
74, 6.690, 33.818

Deuteranomaly
74, 11.746, 28.205

Tritanomaly
74, 14.746, 3.760

Monochromacy



Original Color
74, 13.586, 22.786

Achromatopsia
75, 0.009, 296.813

Achromatomaly
74, 4.908, 19.710

CSS Examples

Text

The CSS property to change the color of the text to CIELCh 74, 13.586, 22.786 is called "color". The color property can be set on classes, ids or directly on the HTML element.

This example shows how text in the color `rgb(209, 174, 173)` looks like.

```
.text, #text, p{  
    color:rgb(209, 174, 173)  
}
```

If you want to add a text shadow in that color use the text-shadow property, you can generate a text shadow directly with our [CSS Text Shadow Generator](#).

Here you see how black text with a 4 pixel rgb(209, 174, 173) colored shadow looks like.

```
.shadow{ text-shadow: 4px 4px 2px rgb(209, 174, 173) }
```

Border

The CSS property to change the border of an element to CIELCh 74, 13.586, 22.786 is called "border". The border property can be set on classes, ids or directly on the HTML element.

This example shows the color as border, it can be applied via the CSS property "border" or "border-color".

```
.border, #border, table{ border:4px solid rgb(209, 174, 173) }
```

If only the border color should be changed use the property `border-color`.

```
.border{ border-color:rgb(209, 174, 173) }
```

If you want to add a box shadow in that color use:

Here you see how a box with a 4 pixel `rgb(209, 174, 173)` colored shadow looks like.

```
.boxshadow{ -moz-box-shadow:4px 4px 4px  
4px rgb(209, 174, 173); -webkit-box-  
shadow:4px 4px 4px 4px rgb(209, 174, 173);  
box-shadow:4px 4px 4px 4px rgb(209, 174,  
173) }
```

Background

The CSS property to change the background color of an element to CIELCh 74, 13.586, 22.786 is called "background". The background property can be set on classes, ids or directly on the HTML element.

```
.background, #background, body{  
background: rgb(209, 174, 173) }
```

If only the background color should be changed can be used:

```
.background{ background-color: rgb(209,  
174, 173) }
```

This example shows the color as background, it is applied via the CSS property "background".

To optimize and compress your CSS code, you can use our [online CSS compressor and optimizer](#) based on csstidy. If you want to create a linear or radial gradient as background or border, check our [CSS Gradient Generator](#).

Hey! You found this booklet interesting? Support Converting Colors with the new Membership Option!

The pro membership hides all ads, plus gives you double the colors in the color bucket, and more awesome pro features!

[Learn more, Memberships starting at \\$2.50/m!](#)

**Follow me
on Twitter!**

@ConvertingColor