

Converting Colors

CIELCh(74, 14.256, 29.196)

Have a look what the booklet for
CIELCh(74, 14.256, 29.196) contains.

CIELCh(74, 14.238, 29.192)	3
<i>Conversions</i>	4
<i>Details</i>	6
<i>Harmonies</i>	11
<i>Previews</i>	20
<i>Color Blindness Simulation</i>	23
<i>CSS Examples</i>	26

Color

CIELCh(74, 14.238, 29.192)

Conversions

Conversions Part 1

Format	Color
Hex	D2AEAA
RGB	210, 174, 170
RGB Percent	82%, 68%, 67%
CMY	0.1777, 0.3188, 0.3345
CMYK	0.00, 0.17, 0.19, 0.18
HSL	6°, 31%, 74%
HSV	6°, 19%, 82%
XYZ	48.7958, 46.7039, 44.3262
YIQ	184.3080, 22.7400, 6.3880

Conversions

Conversions Part 2

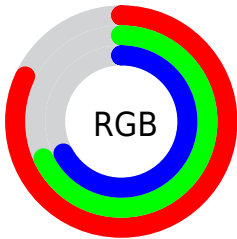
Format	Color
RYB	210, 174, 170
Decimal	13807274
CIELab	74.00, 12.43, 6.94
CIELCh	74, 14.238, 29.192
Yxy	46.7039, 0.3490, 0.3340
Android (android.graphics.Color)	4291997354 (0xFFD2AEAA)
YUV	184.3080, -7.0538, 22.5319
Hunter-Lab	68.3403, 7.8557, 9.3821

Details

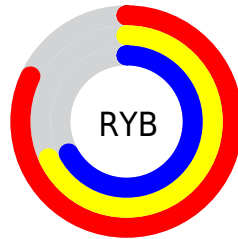
The CIELCh color **74, 14.238, 29.192** is a light color, and the websafe version is hex **CC9999**. A complement of this color would be **80, 12.514, 208.413**, and the grayscale version is **75, 0.009, 296.813**.

A 20% lighter version of the original color is **93, 9.497, 35.593**, and **54, 14.090, 30.157** is the 20% darker color. If you saturate the color by 10%, you get **69, 22.617, 29.788**, and if you desaturate by 10%, it is **79, 6.496, 28.763**.

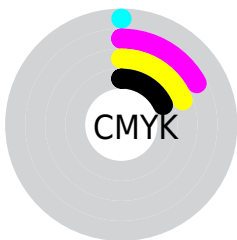
Distribution



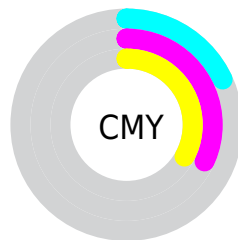
- Red (82%)
- Green (68%)
- Blue (67%)



- Red (82%)
- Yellow (68%)
- Blue (67%)



- Cyan (0%)
- Magenta (17%)
- Yellow (19%)
- Black (18%)



- Cyan (18%)
- Magenta (32%)
- Yellow (33%)

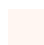
Brightness & Saturation Gradients

These gradients show how the CIELCh color 74, 14.238, 29.192 changes by changing the brightness by 10 percent. The first figure shows a shift by +10% for each color and the second figure -10%.

Similar to the brightness gradients but the following saturation gradients show a change of the CIELCh color 74, 14.238, 29.192 by changing the saturation by 10% instead.

 74, 14.238, 29.192

 74, 14.238, 29.192

 100, 14.238,
29.192

 64, 14.238, 29.192

 94, 14.238, 29.192

 54, 14.238, 29.192

 44, 14.238, 29.192

 34, 14.238, 29.192

 24, 14.238, 29.192

 14, 14.238, 29.192

 4, 14.238, 29.192

 0, 14.238, 29.192

 74, 14.238, 29.192

 74, 14.238, 29.192

69, 22.617, 29.788

79, 6.496, 28.763

64, 31.646, 30.604

85, 0.641, 209.499

59, 41.282, 31.720

90, 7.227, 208.532

55, 51.412, 33.199

95, 13.319,
208.425

51, 61.812, 35.074

97, 15.097,
198.500

48, 72.069, 37.264

46, 81.322, 39.402

45, 88.134, 40.879

45, 88.715, 41.061

Harmonies

Complementary

The Complementary color scheme is a pair of colors which are on the opposite of each other on the color wheel.



74, 14.238, 29.192



80, 12.514, 208.413

Rectangle

The Rectangle color scheme consists of four colors that form a rectangle on the color wheel.



74, 14.238, 29.192



74, 14.238, 79.192



74, 14.238, 209.192



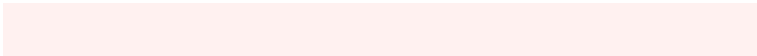
74, 14.238, 259.192

Sweetspot

The Sweet Spot groups the original color and five complimentary colors.



74, 14.237, 29.201



96, 4.976, 28.630



74, 24.299, 328.367



51, 3.309, 28.661



0, 0.000, 0.000



53, 0.007, 296.813

Same Dimension

The Same Dimension uses a secret algorithm to generate beautiful new colors.



74, 14.237, 29.201



86, 20.479, 29.423



79, 14.214, 82.953



41, 4.061, 28.777



36, 74.996, 41.222



5, 18.833, 24.603

Inverse Universe

The Inverse Universe completely reimagines the original color for something new.



80, 12.514, 208.413



95, 17.444, 208.398



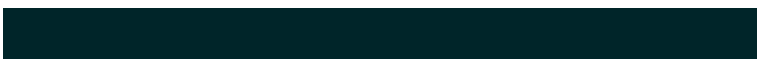
75, 13.926, 268.190



43, 3.821, 208.543



57, 32.711, 214.073



12, 12.717, 210.281

Previews

White Background



This preview shows how the CIELCh color 74, 14.238, 29.192 looks on a white background.

Color Contrast Check

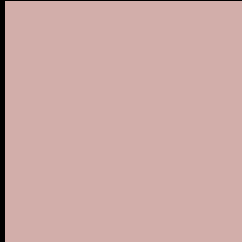
Large Text (above 18pt) WCAG AA × Fail

Any Text WCAG AA × Fail

Large Text (above 18pt) WCAG AAA × Fail

Any Text WCAG AAA × Fail

Black Background



This preview shows how the CIE LCh color 74, 14.238, 29.192 looks on a black background.

Color Contrast Check

Large Text (above 18pt) WCAG AA ✓ Pass

Any Text WCAG AA ✓ Pass

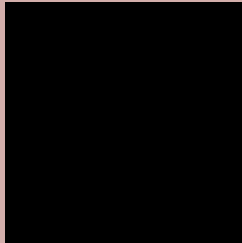
Large Text (above 18pt) WCAG AAA ✓ Pass

Any Text WCAG AAA ✓ Pass

If you want to check with other color combinations, try the [Color Contrast Checker](#).

CIELCh 74, 14.238, 29.192

Background



This preview shows how black text looks on a background with the CIELCh color 74, 14.238, 29.192.



This preview shows how white text looks on a background with the CIELCh color 74, 14.238, 29.192.

Color Blindness Simulation

Color vision deficiency is a very complex topic, and I could not describe the different causes any better than Wikipedia does, so if you want to learn more, you should check out their [article about color blindness](#).

Dichromacy



Original Color

74, 14.238, 29.192

Protanopia

74, 4.394, 78.536

Deuteranopia

74, 11.565, 39.170



Tritanopia
74, 17.241, 355.063

Trichromacy



Original Color
74, 14.238, 29.192

Protanomaly
74, 7.290, 46.122

Deuteranomaly
74, 12.543, 35.204

Tritanomaly
74, 15.398, 6.635

Monochromacy



Original Color
74, 14.238, 29.192

Achromatopsia
75, 0.009, 296.813

Achromatomaly
74, 4.944, 25.954

CSS Examples

Text

The CSS property to change the color of the text to CIELCh 74, 14.238, 29.192 is called "color". The color property can be set on classes, ids or directly on the HTML element.

This example shows how text in the color `rgb(210, 174, 170)` looks like.

```
.text, #text, p{  
    color:rgb(210, 174, 170)  
}
```

If you want to add a text shadow in that color use the text-shadow property, you can generate a text shadow directly with our [CSS Text Shadow Generator](#).

Here you see how black text with a 4 pixel rgb(210, 174, 170) colored shadow looks like.

```
.shadow{ text-shadow: 4px 4px 2px rgb(210, 174, 170) }
```

Border

The CSS property to change the border of an element to CIELCh 74, 14.238, 29.192 is called "border". The border property can be set on classes, ids or directly on the HTML element.

This example shows the color as border, it can be applied via the CSS property "border" or "border-color".

```
.border, #border, table{ border:4px solid rgb(210, 174, 170) }
```

If only the border color should be changed use the property `border-color`.

```
.border{ border-color:rgb(210, 174, 170) }
```

If you want to add a box shadow in that color use:

Here you see how a box with a 4 pixel `rgb(210, 174, 170)` colored shadow looks like.

```
.boxshadow{ -moz-box-shadow:4px 4px 4px  
4px rgb(210, 174, 170); -webkit-box-  
shadow:4px 4px 4px 4px rgb(210, 174, 170);  
box-shadow:4px 4px 4px 4px rgb(210, 174,  
170) }
```

Background

The CSS property to change the background color of an element to CIELCh 74, 14.238, 29.192 is called "background". The background property can be set on classes, ids or directly on the HTML element.

```
.background, #background, body{  
background: rgb(210, 174, 170) }
```

If only the background color should be changed can be used:

```
.background{ background-color: rgb(210,  
174, 170) }
```

This example shows the color as background, it is applied via the CSS property "background".

To optimize and compress your CSS code, you can use our [online CSS compressor and optimizer](#) based on csstidy. If you want to create a linear or radial gradient as background or border, check our [CSS Gradient Generator](#).

Hey! You found this booklet interesting? Support Converting Colors with the new Membership Option!

The pro membership hides all ads, plus gives you double the colors in the color bucket, and more awesome pro features!

[Learn more, Memberships starting at \\$2.50/m!](#)

**Follow me
on Twitter!**

@ConvertingColor