

Converting Colors

CIELCh(74, 14.270, 72.790)

Have a look what the booklet for
CIELCh(74, 14.270, 72.790) contains.

CIELCh(74, 14.358, 71.525)	3
<i>Conversions</i>	4
<i>Details</i>	6
<i>Harmonies</i>	11
<i>Previews</i>	20
<i>Color Blindness Simulation</i>	23
<i>CSS Examples</i>	26

Color

CIELCh(74, 14.358, 71.525)

Conversions

Conversions Part 1

Format	Color
Hex	C8B29D
RGB	200, 178, 157
RGB Percent	78%, 70%, 62%
CMY	0.2146, 0.3009, 0.3833
CMYK	0.00, 0.11, 0.21, 0.21
HSL	29°, 28%, 70%
HSV	29°, 21%, 79%
XYZ	45.9710, 46.7039, 38.6047
YIQ	182.1840, 19.8530, -1.8670

Conversions

Conversions Part 2

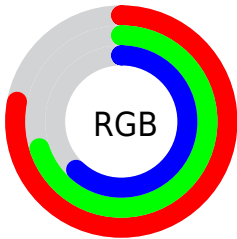
Format	Color
RYB	200, 198, 157
Decimal	13152925
CIELab	74.00, 4.55, 13.62
CIELCh	74, 14.358, 71.525
Yxy	46.7039, 0.3502, 0.3558
Android (android.graphics.Color)	4291343005 (0xFFC8B29D)
YUV	182.1840, -12.4157, 15.6246
Hunter-Lab	68.3403, 0.4776, 14.3459

Details

The CIELCh color $74, 14.358, 71.525$ is a light color, and the websafe version is hex `CCCCCC`. A complement of this color would be $72, 13.509, 257.249$, and the grayscale version is $74, 0.009, 296.813$.

A 20% lighter version of the original color is $94, 13.756, 74.527$, and $54, 14.256, 69.460$ is the 20% darker color. If you saturate the color by 10%, you get $71, 21.571, 70.313$, and if you desaturate by 10%, it is $77, 7.487, 72.731$.

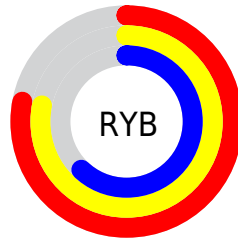
Distribution



Red (78%)

Green (70%)

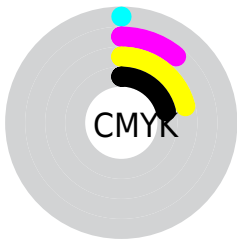
Blue (62%)



Red (78%)

Yellow (78%)

Blue (62%)

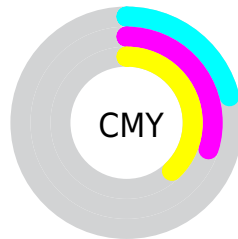


Cyan (0%)

Magenta (11%)

Yellow (21%)

Black (21%)



Cyan (21%)

Magenta (30%)

Yellow (38%)

Brightness & Saturation Gradients

These gradients show how the CIELCh color 74, 14.358, 71.525 changes by changing the brightness by 10 percent. The first figure shows a shift by +10% for each color and the second figure -10%.

Similar to the brightness gradients but the following saturation gradients show a change of the CIELCh color 74, 14.358, 71.525 by changing the saturation by 10% instead.

■ 74, 14.358, 71.525

■ 74, 14.358, 71.525

■ 100, 14.358,
71.525

■ 64, 14.358, 71.525

■ 94, 14.358, 71.525

■ 54, 14.358, 71.525

■ 44, 14.358, 71.525

■ 34, 14.358, 71.525

■ 24, 14.358, 71.525

■ 14, 14.358, 71.525

■ 4, 14.358, 71.525

■ 0, 14.358, 71.525

■ 74, 14.358, 71.525

■ 74, 14.358, 71.525

71, 21.571, 70.313

77, 7.487, 72.731

68, 29.132, 69.081

80, 0.935, 73.579

65, 37.015, 67.840

83, 5.327, 255.229

62, 45.130, 66.571

87, 11.329,
256.334

60, 53.255, 65.218

90, 16.115,
254.735

57, 60.929, 63.647

55, 67.330, 61.592

92, 14.965,
230.683

53, 71.495, 59.424

95, 16.484,
207.481

96, 18.019,
198.313

Harmonies

Complementary

The Complementary color scheme is a pair of colors which are on the opposite of each other on the color wheel.



74, 14.358, 71.525



72, 13.509, 257.249

Rectangle

The Rectangle color scheme consists of four colors that form a rectangle on the color wheel.



74, 14.358, 71.525



74, 14.358, 121.525



74, 14.358, 251.525



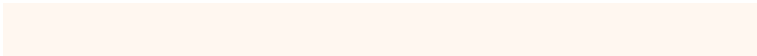
74, 14.358, 301.525

Sweetspot

The Sweet Spot groups the original color and five complimentary colors.



74, 14.358, 71.535



98, 4.699, 73.335



69, 20.272, 344.613



52, 3.122, 73.265



0, 0.000, 0.000



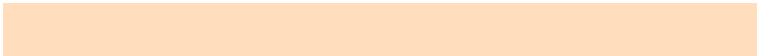
53, 0.007, 296.813

Same Dimension

The Same Dimension uses a secret algorithm to generate beautiful new colors.



74, 14.358, 71.535



90, 21.405, 70.939



80, 22.342, 107.412



40, 3.660, 72.973



44, 61.218, 60.033



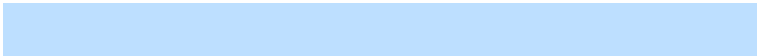
7, 12.950, 56.078

Inverse Universe

The Inverse Universe completely reimagines the original color for something new.



72, 13.509, 257.249



87, 19.825, 258.116



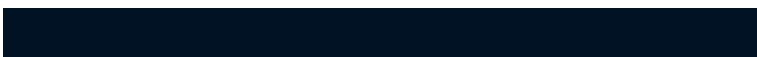
66, 23.442, 291.981



40, 3.575, 255.420



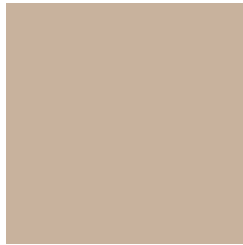
36, 50.072, 282.445



5, 13.833, 269.288

Previews

White Background



This preview shows how the CIELCh color 74, 14.358, 71.525 looks on a white background.

Color Contrast Check

Large Text (above 18pt) WCAG AA × Fail

Any Text WCAG AA × Fail

Large Text (above 18pt) WCAG AAA × Fail

Any Text WCAG AAA × Fail

Black Background



This preview shows how the CIELCh color 74, 14.358, 71.525 looks on a black background.

Color Contrast Check

Large Text (above 18pt) WCAG AA ✓ Pass

Any Text WCAG AA ✓ Pass

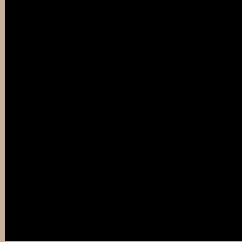
Large Text (above 18pt) WCAG AAA ✓ Pass

Any Text WCAG AAA ✓ Pass

If you want to check with other color combinations, try the [Color Contrast Checker](#).

CIELCh 74, 14.358, 71.525

Background



This preview shows how black text looks on a background with the CIELCh color 74, 14.358, 71.525.



This preview shows how white text looks on a background with the CIELCh color 74, 14.358, 71.525.

Color Blindness Simulation

Color vision deficiency is a very complex topic, and I could not describe the different causes any better than Wikipedia does, so if you want to learn more, you should check out their [article about color blindness](#).

Dichromacy



Original Color

74, 14.358, 71.525

Protanopia

74, 12.487, 90.671

Deuteranopia

74, 16.148, 54.611



Tritanopia
74, 13.283, 348.713

Trichromacy



Original Color
74, 14.358, 71.525

Protanomaly
74, 13.094, 84.039

Deuteranomaly
74, 15.171, 59.621

Tritanomaly
74, 10.363, 20.238

Monochromacy



Original Color
74, 14.358, 71.525

Achromatopsia
74, 0.009, 296.813

Achromatomaly
74, 5.268, 74.333

CSS Examples

Text

The CSS property to change the color of the text to CIELCh 74, 14.358, 71.525 is called "color". The color property can be set on classes, ids or directly on the HTML element.

This example shows how text in the color `rgb(200, 178, 157)` looks like.

```
.text, #text, p{  
    color:rgb(200, 178, 157)  
}
```

If you want to add a text shadow in that color use the text-shadow property, you can generate a text shadow directly with our [CSS Text Shadow Generator](#).

Here you see how black text with a 4 pixel rgb(200, 178, 157) colored shadow looks like.

```
.shadow{ text-shadow: 4px 4px 2px rgb(200, 178, 157) }
```

Border

The CSS property to change the border of an element to CIELCh 74, 14.358, 71.525 is called "border". The border property can be set on classes, ids or directly on the HTML element.

This example shows the color as border, it can be applied via the CSS property "border" or "border-color".

```
.border, #border, table{ border:4px solid rgb(200, 178, 157) }
```

If only the border color should be changed use the property `border-color`.

```
.border{ border-color:rgb(200, 178, 157) }
```

If you want to add a box shadow in that color use:

Here you see how a box with a 4 pixel `rgb(200, 178, 157)` colored shadow looks like.

```
.boxshadow{ -moz-box-shadow:4px 4px 4px  
4px rgb(200, 178, 157); -webkit-box-  
shadow:4px 4px 4px 4px rgb(200, 178, 157);  
box-shadow:4px 4px 4px 4px rgb(200, 178,  
157) }
```

Background

The CSS property to change the background color of an element to CIELCh 74, 14.358, 71.525 is called "background". The background property can be set on classes, ids or directly on the HTML element.

```
.background, #background, body{  
background: rgb(200, 178, 157) }
```

If only the background color should be changed can be used:

```
.background{ background-color: rgb(200,  
178, 157) }
```

This example shows the color as background, it is applied via the CSS property "background".

To optimize and compress your CSS code, you can use our [online CSS compressor and optimizer](#) based on csstidy. If you want to create a linear or radial gradient as background or border, check our [CSS Gradient Generator](#).

Hey! You found this booklet interesting? Support Converting Colors with the new Membership Option!

The pro membership hides all ads, plus gives you double the colors in the color bucket, and more awesome pro features!

[Learn more, Memberships starting at \\$2.50/m!](#)

**Follow me
on Twitter!**

@ConvertingColor