

Converting Colors

CIELCh(74, 14.599, 7.462)

Have a look what the booklet for
CIELCh(74, 14.599, 7.462) contains.

CIELCh(74, 14.526, 7.861)	3
<i>Conversions</i>	4
<i>Details</i>	6
<i>Harmonies</i>	11
<i>Previews</i>	20
<i>Color Blindness Simulation</i>	23
<i>CSS Examples</i>	26

Color

CIELCh(74, 14.526, 7.861)

Conversions

Conversions Part 1

Format	Color
Hex	D2ADB3
RGB	210, 173, 179
RGB Percent	82%, 68%, 70%
CMY	0.1775, 0.3225, 0.2990
CMYK	0.00, 0.18, 0.15, 0.18
HSL	350°, 29%, 75%
HSV	350°, 18%, 82%
XYZ	49.5159, 46.7039, 48.9243
YIQ	184.7470, 20.1260, 9.7100

Conversions

Conversions Part 2

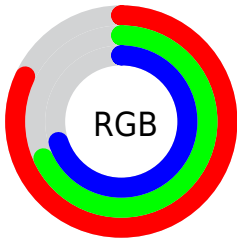
Format	Color
R _Y B	210, 173, 179
Decimal	13807027
CIE Lab	74.00, 14.39, 1.99
CIE LCh	74, 14.526, 7.861
Yxy	46.7039, 0.3411, 0.3218
Android (android.graphics.Color)	4291997107 (0xFFD2ADB3)
YUV	184.7470, -2.8333, 22.1469
Hunter-Lab	68.3403, 9.7366, 5.3929

Details

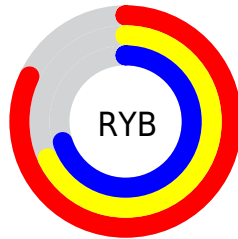
The CIELCh color **74, 14.526, 7.861** is a light color, and the websafe version is hex **CC9999**. A complement of this color would be **81, 13.423, 184.694**, and the grayscale version is **75, 0.009, 296.813**.

A 20% lighter version of the original color is **93, 9.866, 1.857**, and **54, 14.230, 9.481** is the 20% darker color. If you saturate the color by 10%, you get **68, 23.369, 9.128**, and if you desaturate by 10%, it is **80, 6.111, 6.780**.

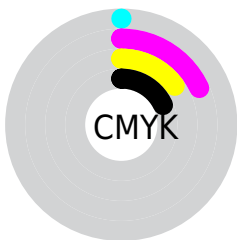
Distribution



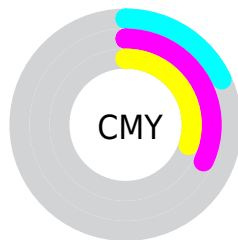
- Red (82%)
- Green (68%)
- Blue (70%)



- Red (82%)
- Yellow (68%)
- Blue (70%)



- Cyan (0%)
- Magenta (18%)
- Yellow (15%)
- Black (18%)



- Cyan (18%)
- Magenta (32%)
- Yellow (30%)

Brightness & Saturation Gradients

These gradients show how the CIELCh color 74, 14.526, 7.861 changes by changing the brightness by 10 percent. The first figure shows a shift by +10% for each color and the second figure -10%.

Similar to the brightness gradients but the following saturation gradients show a change of the CIELCh color 74, 14.526, 7.861 by changing the saturation by 10% instead.

 74, 14.526, 7.861  74, 14.526, 7.861

 100, 14.526, 7.861  64, 14.526, 7.861

 94, 14.526, 7.861  54, 14.526, 7.861

 44, 14.526, 7.861

 34, 14.526, 7.861

 24, 14.526, 7.861

 14, 14.526, 7.861

 4, 14.526, 7.861

 0, 14.526, 7.861

 74, 14.526, 7.861

 74, 14.526, 7.861

68, 23.369, 9.128

80, 6.111, 6.780

63, 32.554, 10.663

85, 1.835, 186.285

58, 41.906, 12.571

91, 9.318, 185.296

54, 51.158, 14.979

97, 15.614,
187.181

50, 59.974, 18.033

97, 15.078,
198.502

47, 68.027, 21.859

45, 75.117, 26.465

44, 81.229, 31.523

44, 82.629, 32.623

Harmonies

Complementary

The Complementary color scheme is a pair of colors which are on the opposite of each other on the color wheel.



74, 14.526, 7.861



81, 13.423, 184.694

Rectangle

The Rectangle color scheme consists of four colors that form a rectangle on the color wheel.



74, 14.526, 7.861



74, 14.526, 57.861



74, 14.526, 187.861



74, 14.526, 237.861

Sweetspot

The Sweet Spot groups the original color and five complimentary colors.



74, 14.524, 7.867



97, 4.657, 6.494



74, 22.935, 320.592



51, 3.183, 6.576



0, 0.000, 0.000



53, 0.007, 296.813

Same Dimension

The Same Dimension uses a secret algorithm to generate beautiful new colors.



74, 14.524, 7.867



86, 20.468, 8.296



77, 11.656, 54.296



41, 4.554, 6.968



35, 69.542, 31.763



4, 20.140, 11.943

Inverse Universe

The Inverse Universe completely reimagines the original color for something new.



74, 14.524, 7.867



86, 20.468, 8.296



78, 10.626, 237.465



41, 4.554, 6.968



35, 69.542, 31.763



4, 20.140, 11.943

Previews

White Background



This preview shows how the CIELCh color 74, 14.526, 7.861 looks on a white background.

Color Contrast Check

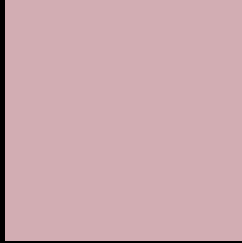
Large Text (above 18pt) WCAG AA × Fail

Any Text WCAG AA × Fail

Large Text (above 18pt) WCAG AAA × Fail

Any Text WCAG AAA × Fail

Black Background



This preview shows how the CIELCh color 74, 14.526, 7.861 looks on a black background.

Color Contrast Check

Large Text (above 18pt) WCAG AA ✓ Pass

Any Text WCAG AA ✓ Pass

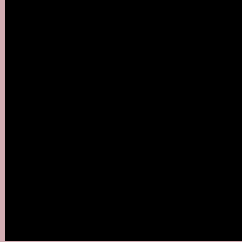
Large Text (above 18pt) WCAG AAA ✓ Pass

Any Text WCAG AAA ✓ Pass

If you want to check with other color combinations, try the [Color Contrast Checker](#).

CIELCh 74, 14.526, 7.861

Background



This preview shows how black text looks on a background with the CIELCh color 74, 14.526, 7.861.



This preview shows how white text looks on a background with the CIELCh color 74, 14.526, 7.861.

Color Blindness Simulation

Color vision deficiency is a very complex topic, and I could not describe the different causes any better than Wikipedia does, so if you want to learn more, you should check out their [article about color blindness](#).

Dichromacy



Original Color


74, 14.526, 7.861

Protanopia

74, 2.220, 332.340

Deuteranopia

74, 9.602, 13.752



Tritanopia
74, 16.326, 355.512

Trichromacy



Original Color
74, 14.526, 7.861

Protanomaly
74, 6.411, 0.218

Deuteranomaly
74, 11.206, 12.069

Tritanomaly
74, 15.948, 359.066

Monochromacy



Original Color
74, 14.526, 7.861

Achromatopsia
75, 0.009, 296.813

Achromatomaly
75, 5.009, 7.320

CSS Examples

Text

The CSS property to change the color of the text to CIELCh 74, 14.526, 7.861 is called "color". The color property can be set on classes, ids or directly on the HTML element.

This example shows how text in the color `rgb(210, 173, 179)` looks like.

```
.text, #text, p{  
    color:rgb(210, 173, 179)  
}
```

If you want to add a text shadow in that color use the text-shadow property, you can generate a text shadow directly with our [CSS Text Shadow Generator](#).

Here you see how black text with a 4 pixel rgb(210, 173, 179) colored shadow looks like.

```
.shadow{ text-shadow: 4px 4px 2px rgb(210, 173, 179) }
```

Border

The CSS property to change the border of an element to CIELCh 74, 14.526, 7.861 is called "border". The border property can be set on classes, ids or directly on the HTML element.

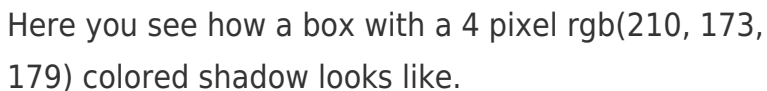
This example shows the color as border, it can be applied via the CSS property "border" or "border-color".

```
.border, #border, table{ border:4px solid rgb(210, 173, 179) }
```

If only the border color should be changed use the property `border-color`.

```
.border{ border-color:rgb(210, 173, 179) }
```

If you want to add a box shadow in that color use:



Here you see how a box with a 4 pixel `rgb(210, 173, 179)` colored shadow looks like.

```
.boxshadow{ -moz-box-shadow:4px 4px 4px 4px rgb(210, 173, 179); -webkit-box-shadow:4px 4px 4px 4px rgb(210, 173, 179); box-shadow:4px 4px 4px 4px rgb(210, 173, 179) }
```

Background

The CSS property to change the background color of an element to CIELCh 74, 14.526, 7.861 is called "background". The background property can be set on classes, ids or directly on the HTML element.

```
.background, #background, body{  
background: rgb(210, 173, 179) }
```

If only the background color should be changed can be used:

```
.background{ background-color: rgb(210,  
173, 179) }
```

This example shows the color as background, it is applied via the CSS property "background".

To optimize and compress your CSS code, you can use our [online CSS compressor and optimizer](#) based on csstidy. If you want to create a linear or radial gradient as background or border, check our [CSS Gradient Generator](#).

Hey! You found this booklet interesting? Support Converting Colors with the new Membership Option!

The pro membership hides all ads, plus gives you double the colors in the color bucket, and more awesome pro features!

[Learn more, Memberships starting at \\$2.50/m!](#)

**Follow me
on Twitter!**

@ConvertingColor