

Converting Colors

CIELCh(74, 14.753, 38.447)

Have a look what the booklet for
CIELCh(74, 14.753, 38.447) contains.

CIELCh(74, 14.855, 37.265)	3
<i>Conversions</i>	4
<i>Details</i>	6
<i>Harmonies</i>	11
<i>Previews</i>	20
<i>Color Blindness Simulation</i>	23
<i>CSS Examples</i>	26

Color

CIELCh(74, 14.855, 37.265)

Conversions

Conversions Part 1

Format	Color
Hex	D2AEA6
RGB	210, 174, 166
RGB Percent	82%, 68%, 65%
CMY	0.1766, 0.3178, 0.3492
CMYK	0.00, 0.17, 0.21, 0.18
HSL	11°, 33%, 74%
HSV	11°, 21%, 82%
XYZ	48.5741, 46.7039, 42.5122
YIQ	183.8520, 24.0240, 5.1440

Conversions

Conversions Part 2

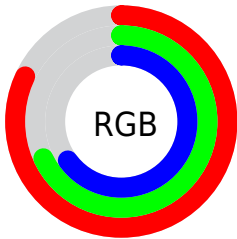
Format	Color
RYB	210, 176, 166
Decimal	13807270
CIELab	74.00, 11.82, 8.99
CIELCh	74, 14.855, 37.265
Yxy	46.7039, 0.3525, 0.3389
Android (android.graphics.Color)	4291997350 (0xFFD2AEA6)
YUV	183.8520, -8.8010, 22.9318
Hunter-Lab	68.3403, 7.2766, 10.9559

Details

The CIELCh color **74, 14.855, 37.265** is a light color, and the websafe version is hex **CC9999**. A complement of this color would be **79, 12.908, 218.028**, and the grayscale version is **75, 0.009, 296.813**.

A 20% lighter version of the original color is **93, 10.304, 46.503**, and **54, 14.827, 38.680** is the 20% darker color. If you saturate the color by 10%, you get **69, 22.882, 37.448**, and if you desaturate by 10%, it is **79, 7.449, 37.220**.

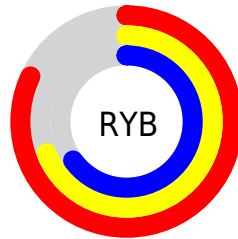
Distribution



Red (82%)

Green (68%)

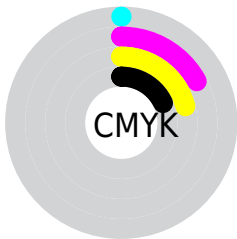
Blue (65%)



Red (82%)

Yellow (69%)

Blue (65%)

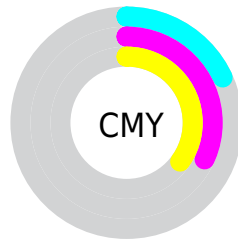


Cyan (0%)

Magenta (17%)

Yellow (21%)

Black (18%)



Cyan (18%)

Magenta (32%)

Yellow (35%)

Brightness & Saturation Gradients

These gradients show how the CIELCh color 74, 14.855, 37.265 changes by changing the brightness by 10 percent. The first figure shows a shift by +10% for each color and the second figure -10%.

Similar to the brightness gradients but the following saturation gradients show a change of the CIELCh color 74, 14.855, 37.265 by changing the saturation by 10% instead.

 74, 14.855, 37.265

 74, 14.855, 37.265

 100, 14.855,
37.265

 64, 14.855, 37.265

 94, 14.855, 37.265

 54, 14.855, 37.265

 44, 14.855, 37.265

 34, 14.855, 37.265

 24, 14.855, 37.265

 14, 14.855, 37.265

 4, 14.855, 37.265

 0, 14.855, 37.265

 74, 14.855, 37.265

 74, 14.855, 37.265

69, 22.882, 37.448

79, 7.449, 37.220

65, 31.557, 37.799

84, 0.622, 36.478

61, 40.868, 38.373

89, 5.682, 217.665

57, 50.734, 39.203

94, 11.520,
217.849

53, 60.961, 40.281

97, 15.012,
198.506

50, 71.112, 41.485

47, 80.215, 42.420

46, 86.569, 42.779

Harmonies

Complementary

The Complementary color scheme is a pair of colors which are on the opposite of each other on the color wheel.



74, 14.855, 37.265



79, 12.908, 218.028

Rectangle

The Rectangle color scheme consists of four colors that form a rectangle on the color wheel.



74, 14.855, 37.265



74, 14.855, 87.265



74, 14.855, 217.265



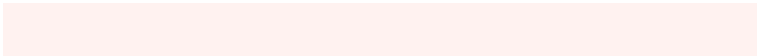
74, 14.855, 267.265

Sweetspot

The Sweet Spot groups the original color and five complimentary colors.



74, 14.854, 37.274



97, 4.681, 37.190



73, 25.532, 330.666



51, 3.114, 37.198



0, 0.000, 0.000



53, 0.007, 296.813

Same Dimension

The Same Dimension uses a secret algorithm to generate beautiful new colors.



74, 14.854, 37.274



86, 21.128, 37.331



79, 16.613, 88.462



41, 3.821, 37.215



37, 73.062, 43.124



6, 17.955, 29.334

Inverse Universe

The Inverse Universe completely reimagines the original color for something new.



79, 12.908, 218.028



93, 17.773, 218.228



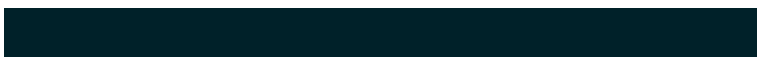
73, 16.537, 274.136



43, 3.601, 217.680



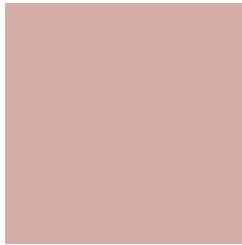
53, 31.960, 231.338



11, 12.220, 223.723

Previews

White Background



This preview shows how the CIELCh color 74, 14.855, 37.265 looks on a white background.

Color Contrast Check

Large Text (above 18pt) WCAG AA × Fail

Any Text WCAG AA × Fail

Large Text (above 18pt) WCAG AAA × Fail

Any Text WCAG AAA × Fail

Black Background



This preview shows how the CIELCh color 74, 14.855, 37.265 looks on a black background.

Color Contrast Check

Large Text (above 18pt) WCAG AA ✓ Pass

Any Text WCAG AA ✓ Pass

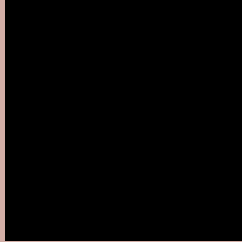
Large Text (above 18pt) WCAG AAA ✓ Pass

Any Text WCAG AAA ✓ Pass

If you want to check with other color combinations, try the [Color Contrast Checker](#).

CIELCh 74, 14.855, 37.265

Background



This preview shows how black text looks on a background with the CIELCh color 74, 14.855, 37.265.



This preview shows how white text looks on a background with the CIELCh color 74, 14.855, 37.265.

Color Blindness Simulation

Color vision deficiency is a very complex topic, and I could not describe the different causes any better than Wikipedia does, so if you want to learn more, you should check out their [article about color blindness](#).

Dichromacy



Original Color

74, 14.855, 37.265

Protanopia

74, 6.498, 85.184

Deuteranopia

74, 12.991, 44.627



Tritanopia
74, 17.040, 356.721

Trichromacy



Original Color
74, 14.855, 37.265

Protanomaly
74, 8.497, 54.574

Deuteranomaly
74, 13.515, 41.259

Tritanomaly
74, 15.235, 10.593

Monochromacy



Original Color
74, 14.855, 37.265

Achromatopsia
75, 0.009, 296.813

Achromatomaly
74, 5.188, 37.826

CSS Examples

Text

The CSS property to change the color of the text to CIELCh 74, 14.855, 37.265 is called "color". The color property can be set on classes, ids or directly on the HTML element.

This example shows how text in the color `rgb(210, 174, 166)` looks like.

```
.text, #text, p{  
    color:rgb(210, 174, 166)  
}
```

If you want to add a text shadow in that color use the text-shadow property, you can generate a text shadow directly with our [CSS Text Shadow Generator](#).

Here you see how black text with a 4 pixel rgb(210, 174, 166) colored shadow looks like.

```
.shadow{ text-shadow: 4px 4px 2px rgb(210, 174, 166) }
```

Border

The CSS property to change the border of an element to CIELCh 74, 14.855, 37.265 is called "border". The border property can be set on classes, ids or directly on the HTML element.

This example shows the color as border, it can be applied via the CSS property "border" or "border-color".

```
.border, #border, table{ border:4px solid rgb(210, 174, 166) }
```

If only the border color should be changed use the property border-color.

```
.border{ border-color:rgb(210, 174, 166) }
```

If you want to add a box shadow in that color use:

Here you see how a box with a 4 pixel rgb(210, 174, 166) colored shadow looks like.

```
.boxshadow{ -moz-box-shadow:4px 4px 4px  
4px rgb(210, 174, 166); -webkit-box-  
shadow:4px 4px 4px 4px rgb(210, 174, 166);  
box-shadow:4px 4px 4px 4px rgb(210, 174,  
166) }
```

Background

The CSS property to change the background color of an element to CIELCh 74, 14.855, 37.265 is called "background". The background property can be set on classes, ids or directly on the HTML element.

```
.background, #background, body{  
background: rgb(210, 174, 166) }
```

If only the background color should be changed can be used:

```
.background{ background-color: rgb(210,  
174, 166) }
```

This example shows the color as background, it is applied via the CSS property "background".

To optimize and compress your CSS code, you can use our [online CSS compressor and optimizer](#) based on csstidy. If you want to create a linear or radial gradient as background or border, check our [CSS Gradient Generator](#).

Hey! You found this booklet interesting? Support Converting Colors with the new Membership Option!

The pro membership hides all ads, plus gives you double the colors in the color bucket, and more awesome pro features!

[Learn more, Memberships starting at \\$2.50/m!](#)

**Follow me
on Twitter!**

@ConvertingColor