

Converting Colors

CIELCh(74, 14.825, 75.791)

Have a look what the booklet for
CIELCh(74, 14.825, 75.791) contains.

CIELCh(74, 14.772, 76.354)	3
<i>Conversions</i>	4
<i>Details</i>	6
<i>Harmonies</i>	11
<i>Previews</i>	20
<i>Color Blindness Simulation</i>	23
<i>CSS Examples</i>	26

Color

CIELCh(74, 14.772, 76.354)

Conversions

Conversions Part 1

Format	Color
Hex	C7B39C
RGB	199, 179, 156
RGB Percent	78%, 70%, 61%
CMY	0.2202, 0.2986, 0.3888
CMYK	0.00, 0.10, 0.22, 0.22
HSL	32°, 28%, 70%
HSV	32°, 22%, 78%
XYZ	45.5979, 46.7039, 38.0049
YIQ	182.3580, 19.3030, -2.9130

Conversions

Conversions Part 2

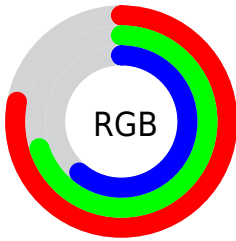
Format	Color
R _Y B	193, 199, 156
Decimal	13087644
CIE Lab	74.00, 3.49, 14.36
CIE LCh	74, 14.772, 76.354
Yxy	46.7039, 0.3499, 0.3584
Android (android.graphics.Color)	4291277724 (0xFFC7B39C)
YUV	182.3580, -12.9945, 14.5950
Hunter-Lab	68.3403, -0.4971, 14.8663

Details

The CIELCh color $74, 14.772, 76.354$ is a light color, and the websafe version is hex `CCCCCC`. A complement of this color would be $71, 14.125, 262.302$, and the grayscale version is $74, 0.009, 296.813$.

A 20% lighter version of the original color is $94, 14.411, 77.940$, and $54, 14.644, 74.669$ is the 20% darker color. If you saturate the color by 10%, you get $71, 22.055, 75.067$, and if you desaturate by 10%, it is $77, 7.777, 77.622$.

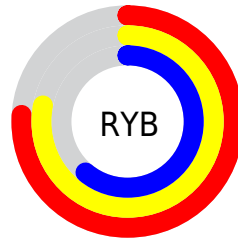
Distribution



Red (78%)

Green (70%)

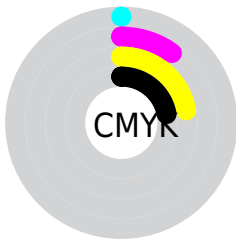
Blue (61%)



Red (76%)

Yellow (78%)

Blue (61%)

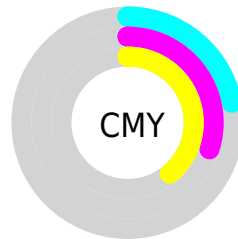


Cyan (0%)

Magenta (10%)

Yellow (22%)

Black (22%)



Cyan (22%)

Magenta (30%)

Yellow (39%)


Brightness & Saturation Gradients

These gradients show how the CIELCh color 74, 14.772, 76.354 changes by changing the brightness by 10 percent. The first figure shows a shift by +10% for each color and the second figure -10%.

Similar to the brightness gradients but the following saturation gradients show a change of the CIELCh color 74, 14.772, 76.354 by changing the saturation by 10% instead.

 74, 14.772, 76.354

 74, 14.772, 76.354

 100, 14.772,
76.354

 64, 14.772, 76.354

 94, 14.772, 76.354

 54, 14.772, 76.354

 44, 14.772, 76.354

 34, 14.772, 76.354

 24, 14.772, 76.354

 14, 14.772, 76.354

 4, 14.772, 76.354

 0, 14.772, 76.354

 74, 14.772, 76.354

 74, 14.772, 76.354

71, 22.055, 75.067

77, 7.777, 77.622

69, 29.622, 73.745

80, 1.056, 78.593

66, 37.430, 72.396

83, 5.412, 260.189

63, 45.369, 70.999

86, 11.652,
261.327

61, 53.194, 69.500

89, 17.555,
262.172

59, 60.420, 67.772

56, 66.236, 65.576

91, 15.551,
242.591

55, 69.826, 63.349

93, 15.643,
220.768

96, 17.739,
201.930

96, 18.449,
198.285

Harmonies

Complementary

The Complementary color scheme is a pair of colors which are on the opposite of each other on the color wheel.



74, 14.772, 76.354



71, 14.125, 262.302

Rectangle

The Rectangle color scheme consists of four colors that form a rectangle on the color wheel.



74, 14.772, 76.354



74, 14.772, 126.354



74, 14.772, 256.354



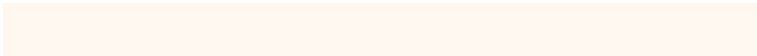
74, 14.772, 306.354

Sweetspot

The Sweet Spot groups the original color and five complimentary colors.



74, 14.773, 76.364



98, 4.857, 78.276



69, 19.668, 347.449



52, 3.226, 78.202



0, 0.000, 0.000



53, 0.007, 296.813

Same Dimension

The Same Dimension uses a secret algorithm to generate beautiful new colors.



74, 14.773, 76.364



91, 21.955, 75.750



79, 22.731, 109.522



41, 3.779, 77.894



45, 60.169, 63.925



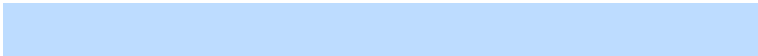
8, 13.007, 61.817

Inverse Universe

The Inverse Universe completely reimagines the original color for something new.



71, 14.125, 262.302



86, 20.759, 263.161



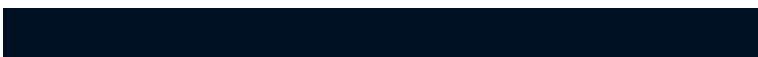
66, 23.898, 293.806



40, 3.717, 260.404



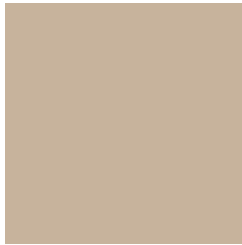
34, 54.889, 286.882



5, 14.587, 273.136

Previews

White Background



This preview shows how the CIELCh color 74, 14.772, 76.354 looks on a white background.

Color Contrast Check

Large Text (above 18pt) WCAG AA × Fail

Any Text WCAG AA × Fail

Large Text (above 18pt) WCAG AAA × Fail

Any Text WCAG AAA × Fail

Black Background



This preview shows how the CIELCh color 74, 14.772, 76.354 looks on a black background.

Color Contrast Check

Large Text (above 18pt) WCAG AA ✓ Pass

Any Text WCAG AA ✓ Pass

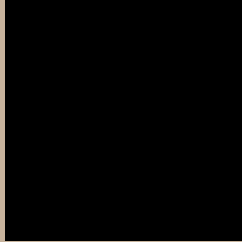
Large Text (above 18pt) WCAG AAA ✓ Pass

Any Text WCAG AAA ✓ Pass

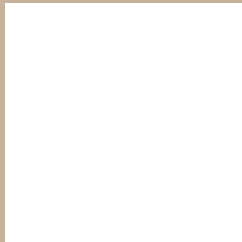
If you want to check with other color combinations, try the [Color Contrast Checker](#).

CIELCh 74, 14.772, 76.354

Background



This preview shows how black text looks on a background with the CIELCh color 74, 14.772, 76.354.



This preview shows how white text looks on a background with the CIELCh color 74, 14.772, 76.354.

Color Blindness Simulation

Color vision deficiency is a very complex topic, and I could not describe the different causes any better than Wikipedia does, so if you want to learn more, you should check out their [article about color blindness](#).

Dichromacy



Original Color

74, 14.772, 76.354

Protanopia

74, 13.518, 91.943

Deuteranopia

74, 16.823, 55.251



Tritanopia
74, 13.250, 345.798

Trichromacy



Original Color
74, 14.772, 76.354

Protanomaly
74, 13.589, 84.907

Deuteranomaly
74, 15.545, 61.042

Tritanomaly
74, 9.580, 20.167

Monochromacy



Original Color
74, 14.772, 76.354

Achromatopsia
74, 0.009, 296.813

Achromatomaly
74, 5.526, 80.754

CSS Examples

Text

The CSS property to change the color of the text to CIELCh 74, 14.772, 76.354 is called "color". The color property can be set on classes, ids or directly on the HTML element.

This example shows how text in the color `rgb(199, 179, 156)` looks like.

```
.text, #text, p{  
    color:rgb(199, 179, 156)  
}
```

If you want to add a text shadow in that color use the text-shadow property, you can generate a text shadow directly with our [CSS Text Shadow Generator](#).

Here you see how black text with a 4 pixel rgb(199, 179, 156) colored shadow looks like.

```
.shadow{ text-shadow: 4px 4px 2px rgb(199, 179, 156) }
```

Border

The CSS property to change the border of an element to CIELCh 74, 14.772, 76.354 is called "border". The border property can be set on classes, ids or directly on the HTML element.

This example shows the color as border, it can be applied via the CSS property "border" or "border-color".

```
.border, #border, table{ border:4px solid rgb(199, 179, 156) }
```

If only the border color should be changed use the property `border-color`.

```
.border{ border-color:rgb(199, 179, 156) }
```

If you want to add a box shadow in that color use:

Here you see how a box with a 4 pixel `rgb(199, 179, 156)` colored shadow looks like.

```
.boxshadow{ -moz-box-shadow:4px 4px 4px  
4px rgb(199, 179, 156); -webkit-box-  
shadow:4px 4px 4px 4px rgb(199, 179, 156);  
box-shadow:4px 4px 4px 4px rgb(199, 179,  
156) }
```

Background

The CSS property to change the background color of an element to CIELCh 74, 14.772, 76.354 is called "background". The background property can be set on classes, ids or directly on the HTML element.

```
.background, #background, body{  
background: rgb(199, 179, 156) }
```

If only the background color should be changed can be used:

```
.background{ background-color: rgb(199,  
179, 156) }
```

This example shows the color as background, it is applied via the CSS property "background".

To optimize and compress your CSS code, you can use our [online CSS compressor and optimizer](#) based on csstidy. If you want to create a linear or radial gradient as background or border, check our [CSS Gradient Generator](#).

Hey! You found this booklet interesting? Support Converting Colors with the new Membership Option!

The pro membership hides all ads, plus gives you double the colors in the color bucket, and more awesome pro features!

[Learn more, Memberships starting at \\$2.50/m!](#)

**Follow me
on Twitter!**

@ConvertingColor