

Converting Colors

CIELCh(74, 14.854, 10.410)

Have a look what the booklet for
CIELCh(74, 14.854, 10.410) contains.

CIELCh(74, 14.831, 10.276)	3
<i>Conversions</i>	4
<i>Details</i>	6
<i>Harmonies</i>	11
<i>Previews</i>	20
<i>Color Blindness Simulation</i>	23
<i>CSS Examples</i>	26

Color

CIELCh(74, 14.831, 10.276)

Conversions

Conversions Part 1

Format	Color
Hex	D3ADB2
RGB	211, 173, 178
RGB Percent	83%, 68%, 70%
CMY	0.1743, 0.3232, 0.3036
CMYK	0.00, 0.18, 0.16, 0.17
HSL	352°, 30%, 75%
HSV	352°, 18%, 83%
XYZ	49.5912, 46.7039, 48.2956
YIQ	184.9320, 21.0430, 9.6110

Conversions

Conversions Part 2

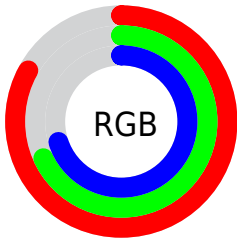
Format	Color
R _Y B	211, 173, 178
Decimal	13872562
CIE Lab	74.00, 14.59, 2.65
CIE LCh	74, 14.831, 10.276
Yxy	46.7039, 0.3430, 0.3230
Android (android.graphics.Color)	4292062642 (0xFFD3ADB2)
YUV	184.9320, -3.4175, 22.8616
Hunter-Lab	68.3403, 9.9331, 5.9383

Details

The CIELCh color **74, 14.831, 10.276** is a light color, and the websafe version is hex **CC9999**. A complement of this color would be **82, 13.584, 187.155**, and the grayscale version is **75, 0.009, 296.813**.

A 20% lighter version of the original color is **93, 9.729, 4.743**, and **54, 14.585, 12.084** is the 20% darker color. If you saturate the color by 10%, you get **68, 23.719, 11.531**, and if you desaturate by 10%, it is **80, 6.409, 9.218**.

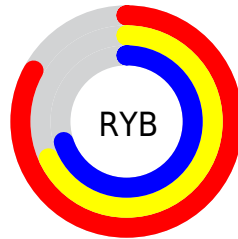
Distribution



Red (83%)

Green (68%)

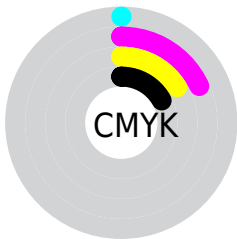
Blue (70%)



Red (83%)

Yellow (68%)

Blue (70%)

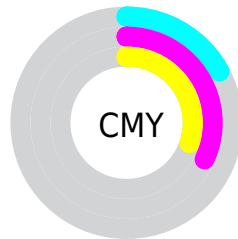


Cyan (0%)

Magenta (18%)

Yellow (16%)

Black (17%)



Cyan (17%)

Magenta (32%)

Yellow (30%)

Brightness & Saturation Gradients

These gradients show how the CIELCh color 74, 14.831, 10.276 changes by changing the brightness by 10 percent. The first figure shows a shift by +10% for each color and the second figure -10%.

Similar to the brightness gradients but the following saturation gradients show a change of the CIELCh color 74, 14.831, 10.276 by changing the saturation by 10% instead.

74, 14.831, 10.276

74, 14.831, 10.276

100, 14.831,
10.276

64, 14.831, 10.276

94, 14.831, 10.276

54, 14.831, 10.276

44, 14.831, 10.276

34, 14.831, 10.276

24, 14.831, 10.276

14, 14.831, 10.276

4, 14.831, 10.276

0, 14.831, 10.276

74, 14.831, 10.276

74, 14.831, 10.276

68, 23.719, 11.531

80, 6.409, 9.218

63, 32.994, 13.064

86, 1.513, 188.816

58, 42.490, 14.985

91, 8.949, 187.791

54, 51.949, 17.421

97, 15.153,
190.138

50, 61.046, 20.511

97, 14.824,
198.518

47, 69.456, 24.359

45, 76.950, 28.913

44, 83.377, 33.712

44, 84.564, 34.538

Harmonies

Complementary

The Complementary color scheme is a pair of colors which are on the opposite of each other on the color wheel.



74, 14.831, 10.276



82, 13.584, 187.155

Rectangle

The Rectangle color scheme consists of four colors that form a rectangle on the color wheel.



74, 14.831, 10.276



74, 14.831, 60.276



74, 14.831, 190.276



74, 14.831, 240.276

Sweetspot

The Sweet Spot groups the original color and five complimentary colors.



74, 14.829, 10.283



97, 4.616, 8.897



74, 23.754, 321.603



51, 3.156, 8.977



0, 0.000, 0.000



53, 0.007, 296.813

Same Dimension

The Same Dimension uses a secret algorithm to generate beautiful new colors.



74, 14.829, 10.283



85, 21.391, 10.779



77, 11.980, 58.163



41, 4.519, 9.359



35, 70.953, 33.733



4, 20.093, 13.351

Inverse Universe

The Inverse Universe completely reimagines the original color for something new.



74, 14.829, 10.283



85, 21.391, 10.779



78, 10.990, 241.863



41, 4.519, 9.359



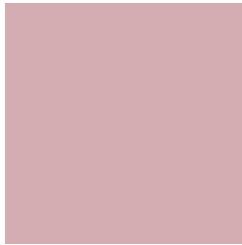
35, 70.953, 33.733



4, 20.093, 13.351

Previews

White Background



This preview shows how the CIELCh color 74, 14.831, 10.276 looks on a white background.

Color Contrast Check

Large Text (above 18pt) WCAG AA × Fail

Any Text WCAG AA × Fail

Large Text (above 18pt) WCAG AAA × Fail

Any Text WCAG AAA × Fail

Black Background



This preview shows how the CIE LCh color 74, 14.831, 10.276 looks on a black background.

Color Contrast Check

Large Text (above 18pt) WCAG AA ✓ Pass

Any Text WCAG AA ✓ Pass

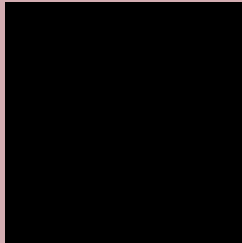
Large Text (above 18pt) WCAG AAA ✓ Pass

Any Text WCAG AAA ✓ Pass

If you want to check with other color combinations, try the [Color Contrast Checker](#).

CIELCh 74, 14.831, 10.276

Background



This preview shows how black text looks on a background with the CIELCh color 74, 14.831, 10.276.



This preview shows how white text looks on a background with the CIELCh color 74, 14.831, 10.276.

Color Blindness Simulation

Color vision deficiency is a very complex topic, and I could not describe the different causes any better than Wikipedia does, so if you want to learn more, you should check out their [article about color blindness](#).

Dichromacy



Original Color

74, 14.831, 10.276

Protanopia

74, 1.596, 359.422

Deuteranopia

74, 9.965, 17.119



Tritanopia
74, 16.898, 354.448

Trichromacy



Original Color
74, 14.831, 10.276

Protanomaly
74, 6.148, 9.752

Deuteranomaly
74, 11.554, 15.032

Tritanomaly
74, 15.784, 0.905

Monochromacy



Original Color
74, 14.831, 10.276

Achromatopsia
75, 0.009, 296.813

Achromatomaly
75, 5.386, 8.236

CSS Examples

Text

The CSS property to change the color of the text to CIELCh 74, 14.831, 10.276 is called "color". The color property can be set on classes, ids or directly on the HTML element.

This example shows how text in the color `rgb(211, 173, 178)` looks like.

```
.text, #text, p{  
    color:rgb(211, 173, 178)  
}
```

If you want to add a text shadow in that color use the text-shadow property, you can generate a text shadow directly with our [CSS Text Shadow Generator](#).

Here you see how black text with a 4 pixel rgb(211, 173, 178) colored shadow looks like.

```
.shadow{ text-shadow: 4px 4px 2px rgb(211, 173, 178) }
```

Border

The CSS property to change the border of an element to CIELCh 74, 14.831, 10.276 is called "border". The border property can be set on classes, ids or directly on the HTML element.

This example shows the color as border, it can be applied via the CSS property "border" or "border-color".

```
.border, #border, table{ border:4px solid rgb(211, 173, 178) }
```

If only the border color should be changed use the property border-color.

```
.border{ border-color:rgb(211, 173, 178) }
```

If you want to add a box shadow in that color use:

Here you see how a box with a 4 pixel rgb(211, 173, 178) colored shadow looks like.

```
.boxshadow{ -moz-box-shadow:4px 4px 4px  
4px rgb(211, 173, 178); -webkit-box-  
shadow:4px 4px 4px 4px rgb(211, 173, 178);  
box-shadow:4px 4px 4px 4px rgb(211, 173,  
178) }
```

Background

The CSS property to change the background color of an element to CIELCh 74, 14.831, 10.276 is called "background". The background property can be set on classes, ids or directly on the HTML element.

```
.background, #background, body{  
background: rgb(211, 173, 178) }
```

If only the background color should be changed can be used:

```
.background{ background-color: rgb(211,  
173, 178) }
```

This example shows the color as background, it is applied via the CSS property "background".

To optimize and compress your CSS code, you can use our [online CSS compressor and optimizer](#) based on csstidy. If you want to create a linear or radial gradient as background or border, check our [CSS Gradient Generator](#).

Hey! You found this booklet interesting? Support Converting Colors with the new Membership Option!

The pro membership hides all ads, plus gives you double the colors in the color bucket, and more awesome pro features!

[Learn more, Memberships starting at \\$2.50/m!](#)

**Follow me
on Twitter!**

@ConvertingColor