

Converting Colors

CIELCh(74, 14.993, 34.038)

Have a look what the booklet for
CIELCh(74, 14.993, 34.038) contains.

CIELCh(74, 15.064, 34.951)	3
<i>Conversions</i>	4
<i>Details</i>	6
<i>Harmonies</i>	11
<i>Previews</i>	20
<i>Color Blindness Simulation</i>	23
<i>CSS Examples</i>	26

Color

CIELCh(74, 15.064, 34.951)

Conversions

Conversions Part 1

Format	Color
Hex	D3AEA7
RGB	211, 174, 167
RGB Percent	83%, 68%, 65%
CMY	0.1740, 0.3190, 0.3465
CMYK	0.00, 0.18, 0.21, 0.17
HSL	10°, 33%, 74%
HSV	10°, 21%, 83%
XYZ	48.7656, 46.7039, 42.8314
YIQ	184.2650, 24.2990, 5.6670

Conversions

Conversions Part 2

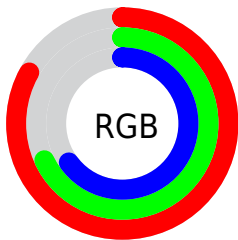
Format	Color
R _Y B	211, 175, 167
Decimal	13872807
CIE Lab	74.00, 12.35, 8.63
CIE LCh	74, 15.064, 34.951
Yxy	46.7039, 0.3526, 0.3377
Android (android.graphics.Color)	4292062887 (0xFFD3AEA7)
YUV	184.2650, -8.5116, 23.4466
Hunter-Lab	68.3403, 7.7769, 10.6790

Details

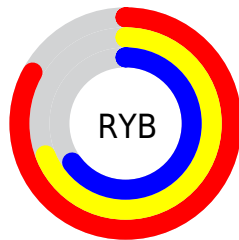
The CIELCh color **74, 15.064, 34.951** is a light color, and the websafe version is hex **CC9999**. A complement of this color would be **80, 13.077, 215.238**, and the grayscale version is **75, 0.009, 296.813**.

A 20% lighter version of the original color is **93, 10.068, 43.948**, and **54, 15.032, 36.222** is the 20% darker color. If you saturate the color by 10%, you get **69, 23.230, 35.262**, and if you desaturate by 10%, it is **79, 7.528, 34.791**.

Distribution



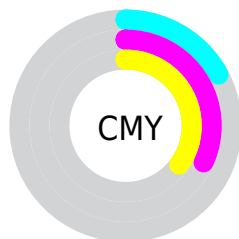
- Red (83%)
- Green (68%)
- Blue (65%)



- Red (83%)
- Yellow (69%)
- Blue (65%)



- Cyan (0%)
- Magenta (18%)
- Yellow (21%)
- Black (17%)



- Cyan (17%)
- Magenta (32%)
- Yellow (35%)


Brightness & Saturation Gradients

These gradients show how the CIELCh color 74, 15.064, 34.951 changes by changing the brightness by 10 percent. The first figure shows a shift by +10% for each color and the second figure -10%.

Similar to the brightness gradients but the following saturation gradients show a change of the CIELCh color 74, 15.064, 34.951 by changing the saturation by 10% instead.

 74, 15.064, 34.951

 74, 15.064, 34.951

 100, 15.064,
34.951

 64, 15.064, 34.951

 94, 15.064, 34.951

 54, 15.064, 34.951

 44, 15.064, 34.951

 34, 15.064, 34.951

 24, 15.064, 34.951

 14, 15.064, 34.951

 4, 15.064, 34.951

 0, 15.064, 34.951

 74, 15.064, 34.951

 74, 15.064, 34.951

69, 23.230, 35.262

79, 7.528, 34.791

65, 32.051, 35.758

84, 0.584, 33.874

60, 41.503, 36.501

89, 5.825, 215.031

56, 51.497, 37.530

94, 11.755,
215.124

53, 61.826, 38.846

97, 14.802,
198.520

50, 72.044, 40.328

47, 81.169, 41.570

46, 87.501, 42.200

Harmonies

Complementary

The Complementary color scheme is a pair of colors which are on the opposite of each other on the color wheel.



74, 15.064, 34.951



80, 13.077, 215.238

Rectangle

The Rectangle color scheme consists of four colors that form a rectangle on the color wheel.



74, 15.064, 34.951



74, 15.064, 84.951



74, 15.064, 214.951



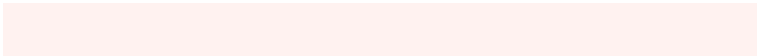
74, 15.064, 264.951

Sweetspot

The Sweet Spot groups the original color and five complimentary colors.



74, 15.063, 34.960



96, 4.752, 34.709



73, 25.806, 330.094



51, 3.161, 34.724



0, 0.000, 0.000



53, 0.007, 296.813

Same Dimension

The Same Dimension uses a secret algorithm to generate beautiful new colors.



74, 15.063, 34.960



85, 21.452, 35.072



79, 16.348, 87.096



41, 3.879, 34.770



36, 73.682, 42.502



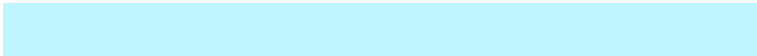
5, 18.189, 27.969

Inverse Universe

The Inverse Universe completely reimagines the original color for something new.



80, 13.077, 215.238



93, 18.013, 215.382



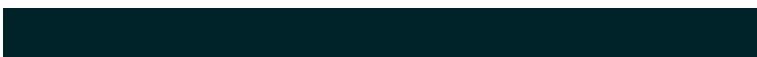
74, 16.205, 272.794



43, 3.653, 215.034



54, 31.900, 226.412



11, 12.296, 219.849

Previews

White Background



This preview shows how the CIELCh color 74, 15.064, 34.951 looks on a white background.

Color Contrast Check

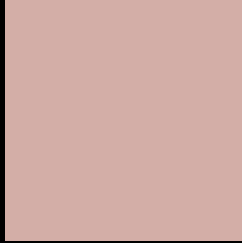
Large Text (above 18pt) WCAG AA × Fail

Any Text WCAG AA × Fail

Large Text (above 18pt) WCAG AAA × Fail

Any Text WCAG AAA × Fail

Black Background



This preview shows how the CIE LCh color 74, 15.064, 34.951 looks on a black background.

Color Contrast Check

Large Text (above 18pt) WCAG AA ✓ Pass

Any Text WCAG AA ✓ Pass

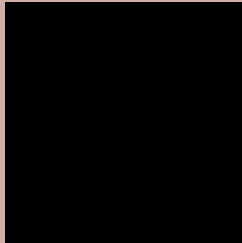
Large Text (above 18pt) WCAG AAA ✓ Pass

Any Text WCAG AAA ✓ Pass

If you want to check with other color combinations, try the [Color Contrast Checker](#).

CIELCh 74, 15.064, 34.951

Background



This preview shows how black text looks on a background with the CIELCh color 74, 15.064, 34.951.



This preview shows how white text looks on a background with the CIELCh color 74, 15.064, 34.951.

Color Blindness Simulation

Color vision deficiency is a very complex topic, and I could not describe the different causes any better than Wikipedia does, so if you want to learn more, you should check out their [article about color blindness](#).

Dichromacy



Original Color

74, 15.064, 34.951

Protanopia

74, 6.007, 83.152

Deuteranopia

74, 12.991, 44.627



Tritanopia
74, 17.392, 357.287

Trichromacy



Original Color
74, 15.064, 34.951

Protanomaly
74, 8.497, 54.574

Deuteranomaly
74, 13.892, 40.690

Tritanomaly
74, 15.690, 8.946

Monochromacy



Original Color
74, 15.064, 34.951

Achromatopsia
75, 0.009, 296.813

Achromatomaly
74, 5.414, 31.199

CSS Examples

Text

The CSS property to change the color of the text to CIELCh 74, 15.064, 34.951 is called "color". The color property can be set on classes, ids or directly on the HTML element.

This example shows how text in the color `rgb(211, 174, 167)` looks like.

```
.text, #text, p{  
    color:rgb(211, 174, 167)  
}
```

If you want to add a text shadow in that color use the text-shadow property, you can generate a text shadow directly with our [CSS Text Shadow Generator](#).

Here you see how black text with a 4 pixel rgb(211, 174, 167) colored shadow looks like.

```
.shadow{ text-shadow: 4px 4px 2px rgb(211, 174, 167) }
```

Border

The CSS property to change the border of an element to CIELCh 74, 15.064, 34.951 is called "border". The border property can be set on classes, ids or directly on the HTML element.

This example shows the color as border, it can be applied via the CSS property "border" or "border-color".

```
.border, #border, table{ border:4px solid rgb(211, 174, 167) }
```

If only the border color should be changed use the property `border-color`.

```
.border{ border-color:rgb(211, 174, 167) }
```

If you want to add a box shadow in that color use:

Here you see how a box with a 4 pixel `rgb(211, 174, 167)` colored shadow looks like.

```
.boxshadow{ -moz-box-shadow:4px 4px 4px  
4px rgb(211, 174, 167); -webkit-box-  
shadow:4px 4px 4px 4px rgb(211, 174, 167);  
box-shadow:4px 4px 4px 4px rgb(211, 174,  
167) }
```

Background

The CSS property to change the background color of an element to CIELCh 74, 15.064, 34.951 is called "background". The background property can be set on classes, ids or directly on the HTML element.

```
.background, #background, body{  
background: rgb(211, 174, 167) }
```

If only the background color should be changed can be used:

```
.background{ background-color: rgb(211,  
174, 167) }
```

This example shows the color as background, it is applied via the CSS property "background".

To optimize and compress your CSS code, you can use our [online CSS compressor and optimizer](#) based on csstidy. If you want to create a linear or radial gradient as background or border, check our [CSS Gradient Generator](#).

Hey! You found this booklet interesting? Support Converting Colors with the new Membership Option!

The pro membership hides all ads, plus gives you double the colors in the color bucket, and more awesome pro features!

[Learn more, Memberships starting at \\$2.50/m!](#)

**Follow me
on Twitter!**

@ConvertingColor