

Converting Colors

CIELCh(74, 15.711, 32.431)

Have a look what the booklet for
CIELCh(74, 15.711, 32.431) contains.

CIELCh(74, 15.711, 32.431)	3
<i>Conversions</i>	4
<i>Details</i>	6
<i>Harmonies</i>	11
<i>Previews</i>	20
<i>Color Blindness Simulation</i>	23
<i>CSS Examples</i>	26

Color

CIELCh(74, 15.711, 32.431)

Conversions

Conversions Part 1

Format	Color
Hex	D4ADA7
RGB	212, 173, 167
RGB Percent	83%, 68%, 65%
CMY	0.1684, 0.3213, 0.3449
CMYK	0.00, 0.18, 0.21, 0.17
HSL	8°, 34%, 74%
HSV	8°, 21%, 83%
XYZ	49.1003, 46.7039, 43.0107
YIQ	183.9770, 25.1700, 6.4020

Conversions

Conversions Part 2

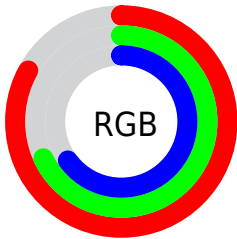
Format	Color
RYB	212, 174, 167
Decimal	13938087
CIELab	74.00, 13.26, 8.43
CIELCh	74, 15.711, 32.431
Yxy	46.7039, 0.3537, 0.3364
Android (android.graphics.Color)	4292128167 (0xFFD4ADA7)
YUV	183.9770, -8.3697, 24.5762
Hunter-Lab	68.3403, 8.6511, 10.5234

Details

The CIELCh color **74, 15.711, 32.431** is a light color, and the websafe version is hex **CC9999**. A complement of this color would be **80, 13.590, 212.188**, and the grayscale version is **75, 0.009, 296.813**.

A 20% lighter version of the original color is **93, 10.214, 40.529**, and **54, 15.717, 33.530** is the 20% darker color. If you saturate the color by 10%, you get **69, 24.097, 32.891**, and if you desaturate by 10%, it is **79, 7.968, 32.139**.

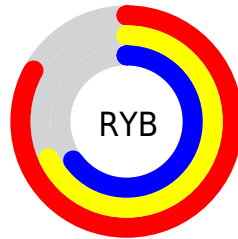
Distribution



Red (83%)

Green (68%)

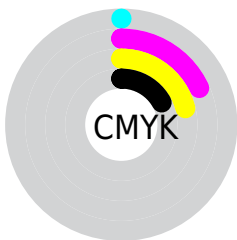
Blue (65%)



Red (83%)

Yellow (68%)

Blue (65%)

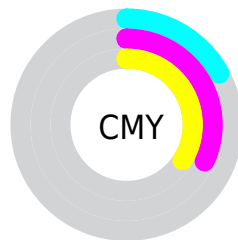


Cyan (0%)

Magenta (18%)

Yellow (21%)

Black (17%)



Cyan (17%)

Magenta (32%)

Yellow (34%)

Brightness & Saturation Gradients

These gradients show how the CIELCh color 74, 15.711, 32.431 changes by changing the brightness by 10 percent. The first figure shows a shift by +10% for each color and the second figure -10%.

Similar to the brightness gradients but the following saturation gradients show a change of the CIELCh color 74, 15.711, 32.431 by changing the saturation by 10% instead.

■ 74, 15.711, 32.431

■ 74, 15.711, 32.431

■ 100, 15.711,
32.431

■ 64, 15.711, 32.431

■ 94, 15.711, 32.431

■ 54, 15.711, 32.431

■ 44, 15.711, 32.431

■ 34, 15.711, 32.431

■ 24, 15.711, 32.431

■ 14, 15.711, 32.431

■ 4, 15.711, 32.431

■ 0, 15.711, 32.431

■ 74, 15.711, 32.431

■ 74, 15.711, 32.431

69, 24.097, 32.891

79, 7.968, 32.139

64, 33.142, 33.560

84, 0.832, 31.383

60, 42.807, 34.506

90, 5.750, 212.145

56, 52.984, 35.776

95, 11.836,
212.133

52, 63.441, 37.376

97, 14.349,
198.549

49, 73.708, 39.181

47, 82.753, 40.750

45, 88.686, 41.634

Harmonies

Complementary

The Complementary color scheme is a pair of colors which are on the opposite of each other on the color wheel.



74, 15.711, 32.431



80, 13.590, 212.188

Rectangle

The Rectangle color scheme consists of four colors that form a rectangle on the color wheel.



74, 15.711, 32.431



74, 15.711, 82.431



74, 15.711, 212.431



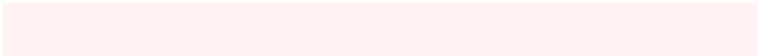
74, 15.711, 262.431

Sweetspot

The Sweet Spot groups the original color and five complimentary colors.



74, 15.710, 32.440



96, 4.843, 31.991



74, 26.680, 329.563



51, 3.221, 32.014



0, 0.000, 0.000



53, 0.007, 296.813

Same Dimension

The Same Dimension uses a secret algorithm to generate beautiful new colors.



74, 15.710, 32.440



85, 21.860, 32.600



80, 16.471, 85.632



42, 4.032, 32.092



36, 75.181, 41.880



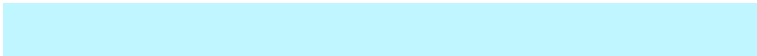
6, 20.208, 26.752

Inverse Universe

The Inverse Universe completely reimagines the original color for something new.



80, 13.590, 212.188



94, 18.334, 212.260



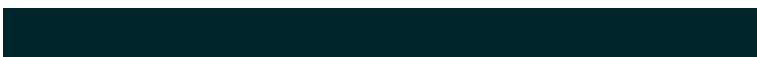
74, 16.250, 271.473



44, 3.795, 212.132



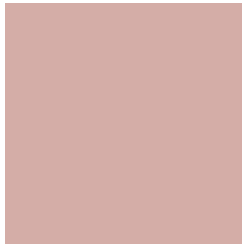
56, 32.444, 220.950



13, 12.888, 215.909

Previews

White Background



This preview shows how the CIELCh color 74, 15.711, 32.431 looks on a white background.

Color Contrast Check

Large Text (above 18pt) WCAG AA × Fail

Any Text WCAG AA × Fail

Large Text (above 18pt) WCAG AAA × Fail

Any Text WCAG AAA × Fail

Black Background



This preview shows how the CIELCh color 74, 15.711, 32.431 looks on a black background.

Color Contrast Check

Large Text (above 18pt) WCAG AA ✓ Pass

Any Text WCAG AA ✓ Pass

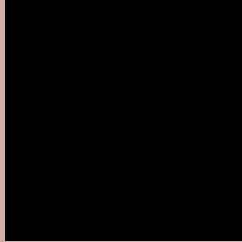
Large Text (above 18pt) WCAG AAA ✓ Pass

Any Text WCAG AAA ✓ Pass

If you want to check with other color combinations, try the [Color Contrast Checker](#).

CIELCh 74, 15.711, 32.431

Background



This preview shows how black text looks on a background with the CIELCh color 74, 15.711, 32.431.



This preview shows how white text looks on a background with the CIELCh color 74, 15.711, 32.431.

Color Blindness Simulation

Color vision deficiency is a very complex topic, and I could not describe the different causes any better than Wikipedia does, so if you want to learn more, you should check out their [article about color blindness](#).

Dichromacy



Original Color


74, 15.711, 32.431

Protanopia

74, 5.526, 80.754

Deuteranopia

74, 12.379, 43.183



Tritanopia
74, 17.745, 357.833

Trichromacy



Original Color
74, 15.711, 32.431

Protanomaly
74, 8.524, 50.192

Deuteranomaly
74, 13.682, 38.647

Tritanomaly
74, 16.075, 9.274

Monochromacy



Original Color
74, 15.711, 32.431

Achromatopsia
75, 0.009, 296.813

Achromatomaly
74, 5.414, 31.199

CSS Examples

Text

The CSS property to change the color of the text to CIELCh 74, 15.711, 32.431 is called "color". The color property can be set on classes, ids or directly on the HTML element.

This example shows how text in the color `rgb(212, 173, 167)` looks like.

```
.text, #text, p{  
    color:rgb(212, 173, 167)  
}
```

If you want to add a text shadow in that color use the text-shadow property, you can generate a text shadow directly with our [CSS Text Shadow Generator](#).

Here you see how black text with a 4 pixel rgb(212, 173, 167) colored shadow looks like.

```
.shadow{ text-shadow: 4px 4px 2px rgb(212, 173, 167) }
```

Border

The CSS property to change the border of an element to CIELCh 74, 15.711, 32.431 is called "border". The border property can be set on classes, ids or directly on the HTML element.

This example shows the color as border, it can be applied via the CSS property "border" or "border-color".

```
.border, #border, table{ border:4px solid rgb(212, 173, 167) }
```

If only the border color should be changed use the property `border-color`.

```
.border{ border-color:rgb(212, 173, 167) }
```

If you want to add a box shadow in that color use:

Here you see how a box with a 4 pixel `rgb(212, 173, 167)` colored shadow looks like.

```
.boxshadow{ -moz-box-shadow:4px 4px 4px  
4px rgb(212, 173, 167); -webkit-box-  
shadow:4px 4px 4px 4px rgb(212, 173, 167);  
box-shadow:4px 4px 4px 4px rgb(212, 173,  
167) }
```

Background

The CSS property to change the background color of an element to CIELCh 74, 15.711, 32.431 is called "background". The background property can be set on classes, ids or directly on the HTML element.

```
.background, #background, body{  
background: rgb(212, 173, 167) }
```

If only the background color should be changed can be used:

```
.background{ background-color: rgb(212,  
173, 167) }
```

This example shows the color as background, it is applied via the CSS property "background".

To optimize and compress your CSS code, you can use our [online CSS compressor and optimizer](#) based on csstidy. If you want to create a linear or radial gradient as background or border, check our [CSS Gradient Generator](#).

Hey! You found this booklet interesting? Support Converting Colors with the new Membership Option!

The pro membership hides all ads, plus gives you double the colors in the color bucket, and more awesome pro features!

[Learn more, Memberships starting at \\$2.50/m!](#)

**Follow me
on Twitter!**

@ConvertingColor