

Converting Colors

CIELCh(74, 15.856, 72.536)

Have a look what the booklet for
CIELCh(74, 15.856, 72.536) contains.

CIELCh(74, 15.742, 71.414)	3
<i>Conversions</i>	4
<i>Details</i>	6
<i>Harmonies</i>	11
<i>Previews</i>	20
<i>Color Blindness Simulation</i>	23
<i>CSS Examples</i>	26

Color

CIELCh(74, 15.742, 71.414)

Conversions

Conversions Part 1

Format	Color
Hex	CAB29B
RGB	202, 178, 155
RGB Percent	79%, 70%, 61%
CMY	0.2083, 0.3024, 0.3926
CMYK	0.00, 0.12, 0.23, 0.21
HSL	29°, 31%, 70%
HSV	29°, 23%, 79%
XYZ	46.1355, 46.7039, 37.5484
YIQ	182.5540, 21.6870, -2.0650

Conversions

Conversions Part 2

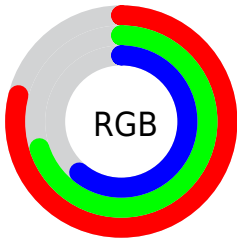
Format	Color
R_{YB}	202, 200, 155
Decimal	13283995
CIE _{Lab}	74.00, 5.02, 14.92
CIE _{LCh}	74, 15.742, 71.414
Yxy	46.7039, 0.3538, 0.3582
Android (android.graphics.Color)	4291474075 (0xFFCAB29B)
YUV	182.5540, -13.5841, 17.0541
Hunter-Lab	68.3403, 0.9071, 15.2623

Details

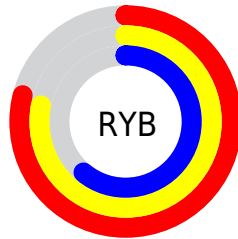
The CIELCh color $74, 15.742, 71.414$ is a light color, and the websafe version is hex `CC9999`. A complement of this color would be $72, 14.732, 257.676$, and the grayscale version is $74, 0.009, 296.813$.

A 20% lighter version of the original color is $94, 15.069, 77.641$, and $54, 15.467, 70.662$ is the 20% darker color. If you saturate the color by 10%, you get $71, 23.068, 70.196$, and if you desaturate by 10%, it is $77, 8.762, 72.629$.

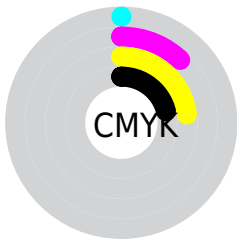
Distribution



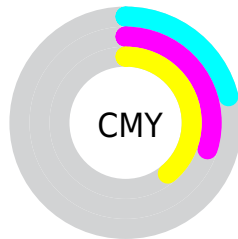
- Red (79%)
- Green (70%)
- Blue (61%)



- Red (79%)
- Yellow (78%)
- Blue (61%)



- Cyan (0%)
- Magenta (12%)
- Yellow (23%)
- Black (21%)



- Cyan (21%)
- Magenta (30%)
- Yellow (39%)

Brightness & Saturation Gradients

These gradients show how the CIELCh color 74, 15.742, 71.414 changes by changing the brightness by 10 percent. The first figure shows a shift by +10% for each color and the second figure -10%.

Similar to the brightness gradients but the following saturation gradients show a change of the CIELCh color 74, 15.742, 71.414 by changing the saturation by 10% instead.

■ 74, 15.742, 71.414

■ 74, 15.742, 71.414

■ 100, 15.742,
71.414

■ 64, 15.742, 71.414

■ 94, 15.742, 71.414

■ 54, 15.742, 71.414

■ 44, 15.742, 71.414

■ 34, 15.742, 71.414

■ 24, 15.742, 71.414

■ 14, 15.742, 71.414

■ 4, 15.742, 71.414

■ 0, 15.742, 71.414

■ 74, 15.742, 71.414

■ 74, 15.742, 71.414

71, 23.068, 70.196

77, 8.762, 72.629

68, 30.741, 68.960

80, 2.107, 73.700

65, 38.727, 67.712

83, 4.251, 255.151

62, 46.915, 66.429

87, 10.342,
256.249

60, 55.048, 65.045

90, 15.845,
256.384

57, 62.601, 63.404

93, 14.539,
231.731

55, 68.679, 61.213

53, 71.905, 59.485

95, 16.010,
207.642

97, 17.521,
198.344

Harmonies

Complementary

The Complementary color scheme is a pair of colors which are on the opposite of each other on the color wheel.



74, 15.742, 71.414



72, 14.732, 257.676

Rectangle

The Rectangle color scheme consists of four colors that form a rectangle on the color wheel.



74, 15.742, 71.414



74, 15.742, 121.414



74, 15.742, 251.414



74, 15.742, 301.414

Sweetspot

The Sweet Spot groups the original color and five complimentary colors.



74, 15.742, 71.423



97, 5.500, 73.339



69, 22.144, 344.792



52, 3.579, 73.272



0, 0.000, 0.000



53, 0.007, 296.813

Same Dimension

The Same Dimension uses a secret algorithm to generate beautiful new colors.



74, 15.742, 71.423



89, 23.179, 70.798



80, 24.355, 107.234



41, 3.740, 73.081



44, 61.911, 60.065



8, 14.355, 56.498

Inverse Universe

The Inverse Universe completely reimagines the original color for something new.



72, 14.732, 257.676



86, 21.336, 258.615



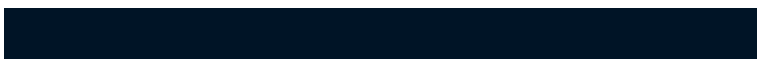
66, 25.669, 292.231



41, 3.654, 255.537



36, 50.811, 282.611



6, 14.949, 270.220

Previews

White Background



This preview shows how the CIELCh color 74, 15.742, 71.414 looks on a white background.

Color Contrast Check

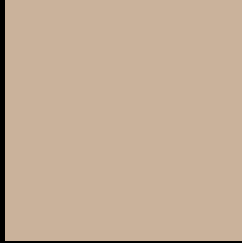
Large Text (above 18pt) WCAG AA × Fail

Any Text WCAG AA × Fail

Large Text (above 18pt) WCAG AAA × Fail

Any Text WCAG AAA × Fail

Black Background



This preview shows how the CIELCh color 74, 15.742, 71.414 looks on a black background.

Color Contrast Check

Large Text (above 18pt) WCAG AA ✓ Pass

Any Text WCAG AA ✓ Pass

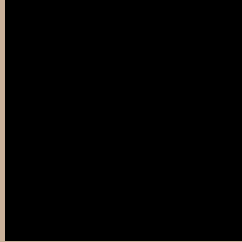
Large Text (above 18pt) WCAG AAA ✓ Pass

Any Text WCAG AAA ✓ Pass

If you want to check with other color combinations, try the [Color Contrast Checker](#).

CIELCh 74, 15.742, 71.414

Background



This preview shows how black text looks on a background with the CIELCh color 74, 15.742, 71.414.



This preview shows how white text looks on a background with the CIELCh color 74, 15.742, 71.414.

Color Blindness Simulation

Color vision deficiency is a very complex topic, and I could not describe the different causes any better than Wikipedia does, so if you want to learn more, you should check out their [article about color blindness](#).

Dichromacy



Original Color


74, 15.742, 71.414

Protanopia

74, 13.914, 94.086

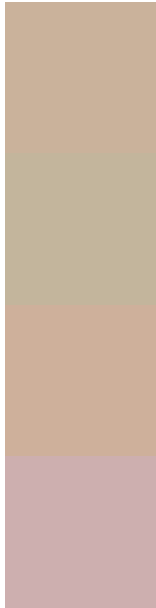
Deuteranopia

74, 17.526, 57.928



Tritanopia
74, 14.530, 349.398

Trichromacy



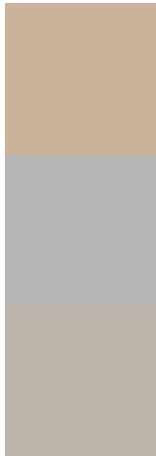
Original Color
74, 15.742, 71.414

Protanomaly
74, 14.573, 86.467

Deuteranomaly
74, 16.621, 62.713

Tritanomaly
74, 11.554, 20.349

Monochromacy



Original Color
74, 15.742, 71.414

Achromatopsia
74, 0.009, 296.813

Achromatomaly
74, 5.721, 77.370

CSS Examples

Text

The CSS property to change the color of the text to CIELCh 74, 15.742, 71.414 is called "color". The color property can be set on classes, ids or directly on the HTML element.

This example shows how text in the color `rgb(202, 178, 155)` looks like.

```
.text, #text, p{  
    color:rgb(202, 178, 155)  
}
```

If you want to add a text shadow in that color use the text-shadow property, you can generate a text shadow directly with our [CSS Text Shadow Generator](#).

Here you see how black text with a 4 pixel rgb(202, 178, 155) colored shadow looks like.

```
.shadow{ text-shadow: 4px 4px 2px rgb(202, 178, 155) }
```

Border

The CSS property to change the border of an element to CIELCh 74, 15.742, 71.414 is called "border". The border property can be set on classes, ids or directly on the HTML element.

This example shows the color as border, it can be applied via the CSS property "border" or "border-color".

```
.border, #border, table{ border:4px solid rgb(202, 178, 155) }
```

If only the border color should be changed use the property `border-color`.

```
.border{ border-color:rgb(202, 178, 155) }
```

If you want to add a box shadow in that color use:

Here you see how a box with a 4 pixel `rgb(202, 178, 155)` colored shadow looks like.

```
.boxshadow{ -moz-box-shadow:4px 4px 4px  
4px rgb(202, 178, 155); -webkit-box-  
shadow:4px 4px 4px 4px rgb(202, 178, 155);  
box-shadow:4px 4px 4px 4px rgb(202, 178,  
155) }
```

Background

The CSS property to change the background color of an element to CIELCh 74, 15.742, 71.414 is called "background". The background property can be set on classes, ids or directly on the HTML element.

```
.background, #background, body{  
background: rgb(202, 178, 155) }
```

If only the background color should be changed can be used:

```
.background{ background-color: rgb(202,  
178, 155) }
```

This example shows the color as background, it is applied via the CSS property "background".

To optimize and compress your CSS code, you can use our [online CSS compressor and optimizer](#) based on csstidy. If you want to create a linear or radial gradient as background or border, check our [CSS Gradient Generator](#).

Hey! You found this booklet interesting? Support Converting Colors with the new Membership Option!

The pro membership hides all ads, plus gives you double the colors in the color bucket, and more awesome pro features!

[Learn more, Memberships starting at \\$2.50/m!](#)

**Follow me
on Twitter!**

@ConvertingColor