

Converting Colors

CIELCh(74, 17.646, 30.951)

Have a look what the booklet for
CIELCh(74, 17.646, 30.951) contains.

CIELCh(74, 17.720, 31.247)	3
<i>Conversions</i>	4
<i>Details</i>	6
<i>Harmonies</i>	11
<i>Previews</i>	20
<i>Color Blindness Simulation</i>	23
<i>CSS Examples</i>	26

Color

CIELCh(74, 17.720, 31.247)

Conversions

Conversions Part 1

Format	Color
Hex	D8ACA6
RGB	216, 172, 166
RGB Percent	85%, 67%, 65%
CMY	0.1540, 0.3265, 0.3500
CMYK	0.00, 0.20, 0.23, 0.15
HSL	7°, 39%, 75%
HSV	7°, 23%, 85%
XYZ	49.7971, 46.7039, 42.3404
YIQ	184.4720, 28.1500, 7.4620

Conversions

Conversions Part 2

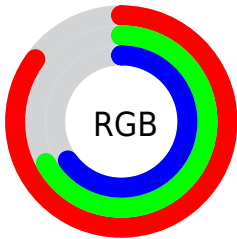
Format	Color
R _Y B	216, 173, 166
Decimal	14199974
CIE Lab	74.00, 15.15, 9.19
CIE LCh	74, 17.720, 31.247
Yxy	46.7039, 0.3587, 0.3364
Android (android.graphics.Color)	4292390054 (0xFFD8ACA6)
YUV	184.4720, -9.1067, 27.6501
Hunter-Lab	68.3403, 10.4710, 11.1049

Details

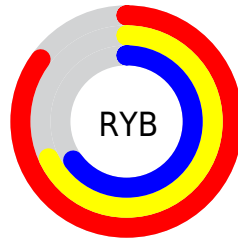
The CIELCh color **74, 17.720, 31.247** is a light color, and the websafe version is hex **CC9999**. A complement of this color would be **81, 15.097, 210.664**, and the grayscale version is **75, 0.009, 296.813**.

A 20% lighter version of the original color is **92, 10.764, 36.647**, and **54, 17.460, 32.457** is the 20% darker color. If you saturate the color by 10%, you get **69, 26.440, 31.820**, and if you desaturate by 10%, it is **79, 9.659, 30.864**.

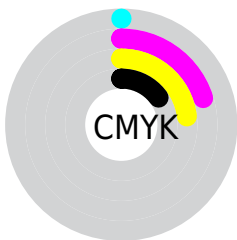
Distribution



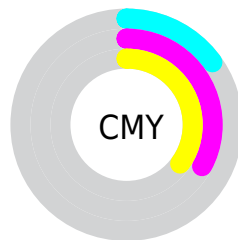
- Red (85%)
- Green (67%)
- Blue (65%)



- Red (85%)
- Yellow (68%)
- Blue (65%)



- Cyan (0%)
- Magenta (20%)
- Yellow (23%)
- Black (15%)



- Cyan (15%)
- Magenta (33%)
- Yellow (35%)

Brightness & Saturation Gradients

These gradients show how the CIELCh color 74, 17.720, 31.247 changes by changing the brightness by 10 percent. The first figure shows a shift by +10% for each color and the second figure -10%.

Similar to the brightness gradients but the following saturation gradients show a change of the CIELCh color 74, 17.720, 31.247 by changing the saturation by 10% instead.

■ 74, 17.720, 31.247

■ 74, 17.720, 31.247

■ 100, 17.720,
31.247

■ 64, 17.720, 31.247

■ 94, 17.720, 31.247

■ 54, 17.720, 31.247

■ 44, 17.720, 31.247

■ 34, 17.720, 31.247

■ 24, 17.720, 31.247

■ 14, 17.720, 31.247

■ 4, 17.720, 31.247

■ 0, 17.720, 31.247

■ 74, 17.720, 31.247

■ 74, 17.720, 31.247

69, 26.440, 31.820

79, 9.659, 30.864

64, 35.823, 32.627

85, 2.230, 30.445

60, 45.810, 33.738

90, 4.619, 210.729

56, 56.260, 35.201

95, 10.948,
210.631

52, 66.894, 37.010

97, 13.182,
198.626

49, 77.150, 38.993

47, 85.793, 40.596

46, 90.200, 41.366

Harmonies

Complementary

The Complementary color scheme is a pair of colors which are on the opposite of each other on the color wheel.



74, 17.720, 31.247



81, 15.097, 210.664

Rectangle

The Rectangle color scheme consists of four colors that form a rectangle on the color wheel.



74, 17.720, 31.247



74, 17.720, 81.247



74, 17.720, 211.247



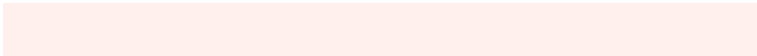
74, 17.720, 261.247

Sweetspot

The Sweet Spot groups the original color and five complimentary colors.



74, 17.718, 31.255



96, 5.734, 30.662



74, 29.884, 329.142



51, 3.735, 30.684



0, 0.000, 0.000



53, 0.007, 296.813

Same Dimension

The Same Dimension uses a secret algorithm to generate beautiful new colors.



74, 17.718, 31.255



83, 25.051, 31.517



80, 18.027, 83.910



42, 4.075, 30.743



36, 75.478, 41.600



6, 20.377, 25.994

Inverse Universe

The Inverse Universe completely reimagines the original color for something new.



81, 15.097, 210.664



93, 20.511, 210.735



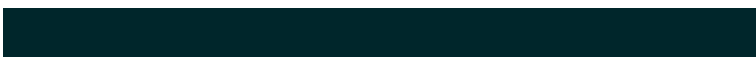
75, 17.667, 270.384



44, 3.834, 210.671



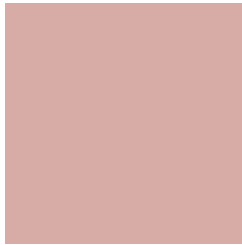
57, 32.646, 218.160



13, 12.990, 213.712

Previews

White Background



This preview shows how the CIELCh color 74, 17.720, 31.247 looks on a white background.

Color Contrast Check

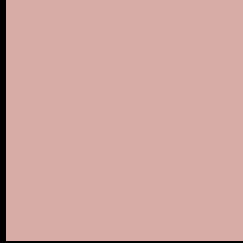
Large Text (above 18pt) WCAG AA × Fail

Any Text WCAG AA × Fail

Large Text (above 18pt) WCAG AAA × Fail

Any Text WCAG AAA × Fail

Black Background



This preview shows how the CIELCh color 74, 17.720, 31.247 looks on a black background.

Color Contrast Check

Large Text (above 18pt) WCAG AA ✓ Pass

Any Text WCAG AA ✓ Pass

Large Text (above 18pt) WCAG AAA ✓ Pass

Any Text WCAG AAA ✓ Pass

If you want to check with other color combinations, try the [Color Contrast Checker](#).

CIELCh 74, 17.720, 31.247

Background



This preview shows how black text looks on a background with the CIELCh color 74, 17.720, 31.247.

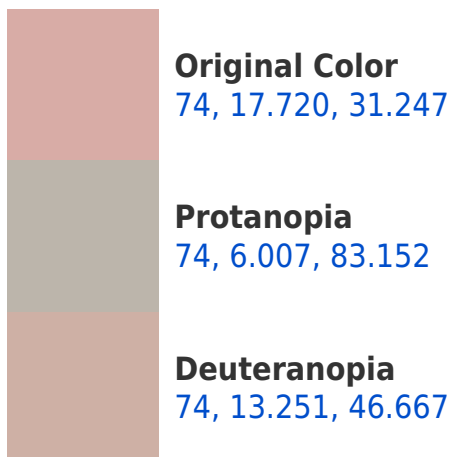



This preview shows how white text looks on a background with the CIELCh color 74, 17.720, 31.247.

Color Blindness Simulation

Color vision deficiency is a very complex topic, and I could not describe the different causes any better than Wikipedia does, so if you want to learn more, you should check out their [article about color blindness](#).

Dichromacy





Tritanopia
74, 19.938, 0.756

Trichromacy



Original Color
74, 17.720, 31.247

Protanomaly
74, 9.157, 51.794

Deuteranomaly
74, 15.055, 39.164

Tritanomaly
74, 18.436, 11.013

Monochromacy



Original Color
74, 17.720, 31.247

Achromatopsia
75, 0.009, 296.813

Achromatomaly
75, 6.299, 34.638

CSS Examples

Text

The CSS property to change the color of the text to CIELCh 74, 17.720, 31.247 is called "color". The color property can be set on classes, ids or directly on the HTML element.

This example shows how text in the color `rgb(216, 172, 166)` looks like.

```
.text, #text, p{  
    color:rgb(216, 172, 166)  
}
```

If you want to add a text shadow in that color use the text-shadow property, you can generate a text shadow directly with our [CSS Text Shadow Generator](#).

Here you see how black text with a 4 pixel rgb(216, 172, 166) colored shadow looks like.

```
.shadow{ text-shadow: 4px 4px 2px rgb(216, 172, 166) }
```

Border

The CSS property to change the border of an element to CIELCh 74, 17.720, 31.247 is called "border". The border property can be set on classes, ids or directly on the HTML element.

This example shows the color as border, it can be applied via the CSS property "border" or "border-color".

```
.border, #border, table{ border:4px solid rgb(216, 172, 166) }
```

If only the border color should be changed use the property `border-color`.

```
.border{ border-color:rgb(216, 172, 166) }
```

If you want to add a box shadow in that color use:

Here you see how a box with a 4 pixel `rgb(216, 172, 166)` colored shadow looks like.

```
.boxshadow{ -moz-box-shadow:4px 4px 4px  
4px rgb(216, 172, 166); -webkit-box-  
shadow:4px 4px 4px 4px rgb(216, 172, 166);  
box-shadow:4px 4px 4px 4px rgb(216, 172,  
166) }
```

Background

The CSS property to change the background color of an element to CIELCh 74, 17.720, 31.247 is called "background". The background property can be set on classes, ids or directly on the HTML element.

```
.background, #background, body{  
background: rgb(216, 172, 166) }
```

If only the background color should be changed can be used:

```
.background{ background-color: rgb(216,  
172, 166) }
```

This example shows the color as background, it is applied via the CSS property "background".

To optimize and compress your CSS code, you can use our [online CSS compressor and optimizer](#) based on csstidy. If you want to create a linear or radial gradient as background or border, check our [CSS Gradient Generator](#).

Hey! You found this booklet interesting? Support Converting Colors with the new Membership Option!

The pro membership hides all ads, plus gives you double the colors in the color bucket, and more awesome pro features!

[Learn more, Memberships starting at \\$2.50/m!](#)

**Follow me
on Twitter!**

@ConvertingColor