

Converting Colors

CIELCh(74, 17.763, 19.693)

Have a look what the booklet for
CIELCh(74, 17.763, 19.693) contains.

CIELCh(74, 17.553, 19.175)	3
<i>Conversions</i>	4
<i>Details</i>	6
<i>Harmonies</i>	11
<i>Previews</i>	20
<i>Color Blindness Simulation</i>	23
<i>CSS Examples</i>	26

Color

CIELCh(74, 17.553, 19.175)

Conversions

Conversions Part 1

Format	Color
Hex	D8ABAC
RGB	216, 171, 172
RGB Percent	85%, 67%, 67%
CMY	0.1529, 0.3294, 0.3255
CMYK	0.00, 0.21, 0.20, 0.15
HSL	359°, 37%, 76%
HSV	359°, 21%, 85%
XYZ	50.3288, 46.7039, 45.3924
YIQ	184.5690, 26.4990, 9.8510

Conversions

Conversions Part 2

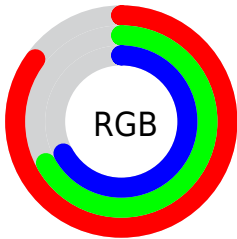
Format	Color
R_{YB}	216, 171, 172
Decimal	14199724
CIE _{Lab}	74.00, 16.58, 5.77
CIE _{LCh}	74, 17.553, 19.175
Yxy	46.7039, 0.3534, 0.3279
Android (android.graphics.Color)	4292389804 (0xFFD8ABAC)
YUV	184.5690, -6.1965, 27.5650
Hunter-Lab	68.3403, 11.8598, 8.4571

Details

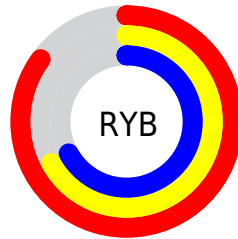
The CIELCh color $74, 17.553, 19.175$ is a light color, and the websafe version is hex `CC9999`. A complement of this color would be $83, 15.384, 196.375$, and the grayscale version is $75, 0.009, 296.813$.

A 20% lighter version of the original color is $92, 10.584, 17.319$, and $54, 17.175, 19.464$ is the 20% darker color. If you saturate the color by 10%, you get $68, 26.938, 20.336$, and if you desaturate by 10%, it is $80, 8.787, 18.257$.

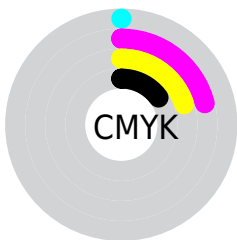
Distribution



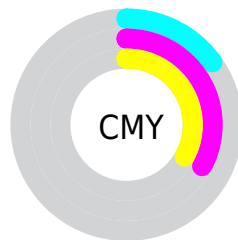
- Red (85%)
- Green (67%)
- Blue (67%)



- Red (85%)
- Yellow (67%)
- Blue (67%)



- Cyan (0%)
- Magenta (21%)
- Yellow (20%)
- Black (15%)



- Cyan (15%)
- Magenta (33%)
- Yellow (33%)

Brightness & Saturation Gradients

These gradients show how the CIELCh color 74, 17.553, 19.175 changes by changing the brightness by 10 percent. The first figure shows a shift by +10% for each color and the second figure -10%.

Similar to the brightness gradients but the following saturation gradients show a change of the CIELCh color 74, 17.553, 19.175 by changing the saturation by 10% instead.

74, 17.553, 19.175

74, 17.553, 19.175

100, 17.553,
19.175

64, 17.553, 19.175

94, 17.553, 19.175

54, 17.553, 19.175

44, 17.553, 19.175

34, 17.553, 19.175

24, 17.553, 19.175

14, 17.553, 19.175

4, 17.553, 19.175

0, 17.553, 19.175

74, 17.553, 19.175

74, 17.553, 19.175

68, 26.938, 20.336

80, 8.787, 18.257

63, 36.883, 21.821

86, 0.650, 16.725

58, 47.236, 23.745

92, 6.890, 197.142

54, 57.746, 26.225

97, 13.091,
198.632

50, 68.073, 29.337

48, 77.771, 33.004

46, 86.064, 36.741

45, 91.323, 39.254

Harmonies

Complementary

The Complementary color scheme is a pair of colors which are on the opposite of each other on the color wheel.



74, 17.553, 19.175



83, 15.384, 196.375

Rectangle

The Rectangle color scheme consists of four colors that form a rectangle on the color wheel.



74, 17.553, 19.175



74, 17.553, 69.175



74, 17.553, 199.175



74, 17.553, 249.175

Sweetspot

The Sweet Spot groups the original color and five complimentary colors.



74, 17.551, 19.182



96, 5.469, 17.847



75, 28.838, 324.636



51, 3.637, 17.906



0, 0.000, 0.000



53, 0.007, 296.813

Same Dimension

The Same Dimension uses a secret algorithm to generate beautiful new colors.



74, 17.551, 19.182



83, 24.495, 19.656



79, 14.635, 69.244



42, 4.549, 18.137



35, 76.410, 38.996



5, 21.982, 18.781

Inverse Universe

The Inverse Universe completely reimagines the original color for something new.



74, 17.551, 19.182



83, 24.495, 19.656



78, 13.687, 254.664



42, 4.549, 18.137



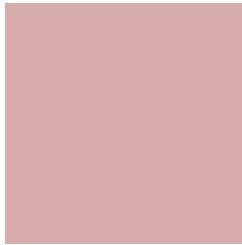
35, 76.410, 38.996



5, 21.982, 18.781

Previews

White Background



This preview shows how the CIELCh color 74, 17.553, 19.175 looks on a white background.

Color Contrast Check

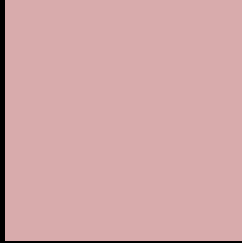
Large Text (above 18pt) WCAG AA × Fail

Any Text WCAG AA × Fail

Large Text (above 18pt) WCAG AAA × Fail

Any Text WCAG AAA × Fail

Black Background



This preview shows how the CIELCh color 74, 17.553, 19.175 looks on a black background.

Color Contrast Check

Large Text (above 18pt) WCAG AA ✓ Pass

Any Text WCAG AA ✓ Pass

Large Text (above 18pt) WCAG AAA ✓ Pass

Any Text WCAG AAA ✓ Pass

If you want to check with other color combinations, try the [Color Contrast Checker](#).

CIELCh 74, 17.553, 19.175

Background



This preview shows how black text looks on a background with the CIELCh color 74, 17.553, 19.175.



This preview shows how white text looks on a background with the CIELCh color 74, 17.553, 19.175.

Color Blindness Simulation

Color vision deficiency is a very complex topic, and I could not describe the different causes any better than Wikipedia does, so if you want to learn more, you should check out their [article about color blindness](#).

Dichromacy



Original Color


74, 17.553, 19.175

Protanopia

74, 2.468, 60.272

Deuteranopia

74, 11.207, 34.086



Tritanopia
74, 19.575, 0.313

Trichromacy



Original Color
74, 17.553, 19.175

Protanomaly
74, 7.657, 24.006

Deuteranomaly
74, 13.339, 27.400

Tritanomaly
74, 18.575, 7.732

Monochromacy



Original Color
74, 17.553, 19.175

Achromatopsia
75, 0.009, 296.813

Achromatomaly
75, 6.057, 19.825

CSS Examples

Text

The CSS property to change the color of the text to CIELCh 74, 17.553, 19.175 is called "color". The color property can be set on classes, ids or directly on the HTML element.

This example shows how text in the color `rgb(216, 171, 172)` looks like.

```
.text, #text, p{  
    color:rgb(216, 171, 172)  
}
```

If you want to add a text shadow in that color use the text-shadow property, you can generate a text shadow directly with our [CSS Text Shadow Generator](#).

Here you see how black text with a 4 pixel rgb(216, 171, 172) colored shadow looks like.

```
.shadow{ text-shadow: 4px 4px 2px rgb(216, 171, 172) }
```

Border

The CSS property to change the border of an element to CIELCh 74, 17.553, 19.175 is called "border". The border property can be set on classes, ids or directly on the HTML element.

This example shows the color as border, it can be applied via the CSS property "border" or "border-color".

```
.border, #border, table{ border:4px solid rgb(216, 171, 172) }
```

If only the border color should be changed use the property `border-color`.

```
.border{ border-color:rgb(216, 171, 172) }
```

If you want to add a box shadow in that color use:

Here you see how a box with a 4 pixel `rgb(216, 171, 172)` colored shadow looks like.

```
.boxshadow{ -moz-box-shadow:4px 4px 4px  
4px rgb(216, 171, 172); -webkit-box-  
shadow:4px 4px 4px 4px rgb(216, 171, 172);  
box-shadow:4px 4px 4px 4px rgb(216, 171,  
172) }
```

Background

The CSS property to change the background color of an element to CIELCh 74, 17.553, 19.175 is called "background". The background property can be set on classes, ids or directly on the HTML element.

```
.background, #background, body{  
background: rgb(216, 171, 172) }
```

If only the background color should be changed can be used:

```
.background{ background-color: rgb(216,  
171, 172) }
```

This example shows the color as background, it is applied via the CSS property "background".

To optimize and compress your CSS code, you can use our [online CSS compressor and optimizer](#) based on csstidy. If you want to create a linear or radial gradient as background or border, check our [CSS Gradient Generator](#).

Hey! You found this booklet interesting? Support Converting Colors with the new Membership Option!

The pro membership hides all ads, plus gives you double the colors in the color bucket, and more awesome pro features!

[Learn more, Memberships starting at \\$2.50/m!](#)

**Follow me
on Twitter!**

@ConvertingColor