

Converting Colors

CIELCh(74, 17.948, 7.921)

Have a look what the booklet for
CIELCh(74, 17.948, 7.921) contains.

CIELCh(74, 18.193, 7.404)	3
<i>Conversions</i>	4
<i>Details</i>	6
<i>Harmonies</i>	11
<i>Previews</i>	20
<i>Color Blindness Simulation</i>	23
<i>CSS Examples</i>	26

Color

CIELCh(74, 18.193, 7.404)

Conversions

Conversions Part 1

Format	Color
Hex	D8AAB2
RGB	216, 170, 178
RGB Percent	85%, 67%, 70%
CMY	0.1519, 0.3324, 0.3010
CMYK	0.00, 0.21, 0.18, 0.15
HSL	350°, 37%, 76%
HSV	350°, 21%, 85%
XYZ	50.8766, 46.7039, 48.5824
YIQ	184.6660, 24.8480, 12.2400

Conversions

Conversions Part 2

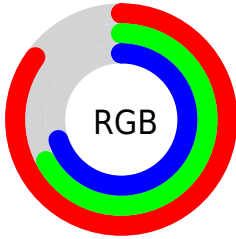
Format	Color
R _Y B	216, 170, 178
Decimal	14199474
CIE Lab	74.00, 18.04, 2.34
CIE LCh	74, 18.193, 7.404
Yxy	46.7039, 0.3481, 0.3195
Android (android.graphics.Color)	4292389554 (0xFFD8AAB2)
YUV	184.6660, -3.2863, 27.4799
Hunter-Lab	68.3403, 13.2905, 5.6896

Details

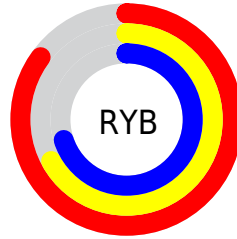
The CIELCh color $74, 18.193, 7.404$ is a light color, and the websafe version is hex `CC9999`. A complement of this color would be $83, 16.571, 183.410$, and the grayscale version is $75, 0.009, 296.813$.

A 20% lighter version of the original color is $92, 11.779, 357.061$, and $54, 18.148, 8.882$ is the 20% darker color. If you saturate the color by 10%, you get $68, 27.400, 8.768$, and if you desaturate by 10%, it is $80, 9.383, 6.264$.

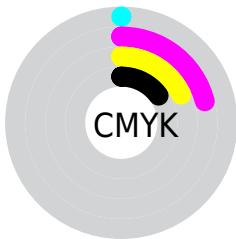
Distribution



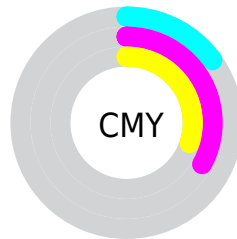
- Red (85%)
- Green (67%)
- Blue (70%)



- Red (85%)
- Yellow (67%)
- Blue (70%)



- Cyan (0%)
- Magenta (21%)
- Yellow (18%)
- Black (15%)




- Cyan (15%)
- Magenta (33%)
- Yellow (30%)

Brightness & Saturation Gradients

These gradients show how the CIELCh color 74, 18.193, 7.404 changes by changing the brightness by 10 percent. The first figure shows a shift by +10% for each color and the second figure -10%.

Similar to the brightness gradients but the following saturation gradients show a change of the CIELCh color 74, 18.193, 7.404 by changing the saturation by 10% instead.

 74, 18.193, 7.404  74, 18.193, 7.404

 100, 18.193, 7.404  64, 18.193, 7.404

 94, 18.193, 7.404  54, 18.193, 7.404

 44, 18.193, 7.404

 34, 18.193, 7.404

 24, 18.193, 7.404

 14, 18.193, 7.404

 4, 18.193, 7.404

 0, 18.193, 7.404

 74, 18.193, 7.404

 74, 18.193, 7.404

68, 27.400, 8.768

80, 9.383, 6.264

63, 36.883, 10.433

86, 1.034, 4.850

58, 46.420, 12.512

92, 6.844, 184.655

54, 55.699, 15.143

97, 13.467,
186.987

50, 64.360, 18.475

97, 13.009,
198.637

48, 72.103, 22.616

46, 78.805, 27.508

45, 83.973, 31.941

Harmonies

Complementary

The Complementary color scheme is a pair of colors which are on the opposite of each other on the color wheel.



74, 18.193, 7.404



83, 16.571, 183.410

Rectangle

The Rectangle color scheme consists of four colors that form a rectangle on the color wheel.



74, 18.193, 7.404



74, 18.193, 57.404



74, 18.193, 187.404



74, 18.193, 237.404

Sweetspot

The Sweet Spot groups the original color and five complimentary colors.



74, 18.191, 7.409



96, 5.625, 5.702



74, 28.301, 320.258



51, 3.738, 5.775



0, 0.000, 0.000



53, 0.007, 296.813

Same Dimension

The Same Dimension uses a secret algorithm to generate beautiful new colors.



74, 18.191, 7.409



83, 25.732, 8.052



77, 14.642, 52.118



42, 4.662, 6.065



35, 69.821, 31.019



5, 22.021, 12.026

Inverse Universe

The Inverse Universe completely reimagines the original color for something new.



74, 18.191, 7.409



83, 25.732, 8.052



79, 13.001, 235.690



42, 4.662, 6.065



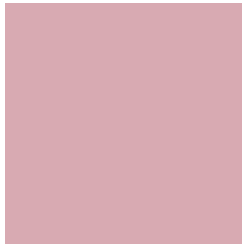
35, 69.821, 31.019



5, 22.021, 12.026

Previews

White Background



This preview shows how the CIELCh color 74, 18.193, 7.404 looks on a white background.

Color Contrast Check

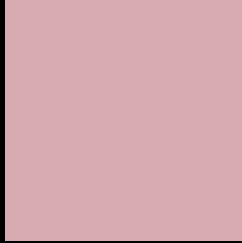
Large Text (above 18pt) WCAG AA × Fail

Any Text WCAG AA × Fail

Large Text (above 18pt) WCAG AAA × Fail

Any Text WCAG AAA × Fail

Black Background



This preview shows how the CIELCh color 74, 18.193, 7.404 looks on a black background.

Color Contrast Check

Large Text (above 18pt) WCAG AA ✓ Pass

Any Text WCAG AA ✓ Pass

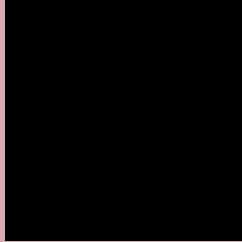
Large Text (above 18pt) WCAG AAA ✓ Pass

Any Text WCAG AAA ✓ Pass

If you want to check with other color combinations, try the [Color Contrast Checker](#).

CIELCh 74, 18.193, 7.404

Background



This preview shows how black text looks on a background with the CIELCh color 74, 18.193, 7.404.



This preview shows how white text looks on a background with the CIELCh color 74, 18.193, 7.404.

Color Blindness Simulation

Color vision deficiency is a very complex topic, and I could not describe the different causes any better than Wikipedia does, so if you want to learn more, you should check out their [article about color blindness](#).

Dichromacy



Original Color

74, 18.193, 7.404

Protanopia

74, 2.645, 324.467

Deuteranopia

74, 9.965, 17.119



Tritanopia

74, 19.194, 359.843

Trichromacy



Original Color
74, 18.193, 7.404

Protanomaly
74, 7.866, 355.731

Deuteranomaly
74, 12.770, 13.242

Tritanomaly
74, 18.901, 2.933

Monochromacy



Original Color
74, 18.193, 7.404

Achromatopsia
75, 0.009, 296.813

Achromatomaly
75, 6.244, 4.875

CSS Examples

Text

The CSS property to change the color of the text to CIELCh 74, 18.193, 7.404 is called "color". The color property can be set on classes, ids or directly on the HTML element.

This example shows how text in the color `rgb(216, 170, 178)` looks like.

```
.text, #text, p{  
    color:rgb(216, 170, 178)  
}
```

If you want to add a text shadow in that color use the text-shadow property, you can generate a text shadow directly with our [CSS Text Shadow Generator](#).

Here you see how black text with a 4 pixel rgb(216, 170, 178) colored shadow looks like.

```
.shadow{ text-shadow: 4px 4px 2px rgb(216, 170, 178) }
```

Border

The CSS property to change the border of an element to CIELCh 74, 18.193, 7.404 is called "border". The border property can be set on classes, ids or directly on the HTML element.

This example shows the color as border, it can be applied via the CSS property "border" or "border-color".

```
.border, #border, table{ border:4px solid rgb(216, 170, 178) }
```

If only the border color should be changed use the property `border-color`.

```
.border{ border-color:rgb(216, 170, 178) }
```

If you want to add a box shadow in that color use:

Here you see how a box with a 4 pixel `rgb(216, 170, 178)` colored shadow looks like.

```
.boxshadow{ -moz-box-shadow:4px 4px 4px  
4px rgb(216, 170, 178); -webkit-box-  
shadow:4px 4px 4px 4px rgb(216, 170, 178);  
box-shadow:4px 4px 4px 4px rgb(216, 170,  
178) }
```

Background

The CSS property to change the background color of an element to CIELCh 74, 18.193, 7.404 is called "background". The background property can be set on classes, ids or directly on the HTML element.

```
.background, #background, body{  
background: rgb(216, 170, 178) }
```

If only the background color should be changed can be used:

```
.background{ background-color: rgb(216,  
170, 178) }
```

This example shows the color as background, it is applied via the CSS property "background".

To optimize and compress your CSS code, you can use our [online CSS compressor and optimizer](#) based on csstidy. If you want to create a linear or radial gradient as background or border, check our [CSS Gradient Generator](#).

Hey! You found this booklet interesting? Support Converting Colors with the new Membership Option!

The pro membership hides all ads, plus gives you double the colors in the color bucket, and more awesome pro features!

[Learn more, Memberships starting at \\$2.50/m!](#)

**Follow me
on Twitter!**

@ConvertingColor