

Converting Colors

CIELCh(74, 18.845, 13.584)

Have a look what the booklet for
CIELCh(74, 18.845, 13.584) contains.

CIELCh(74, 18.758, 14.515)	3
<i>Conversions</i>	4
<i>Details</i>	6
<i>Harmonies</i>	11
<i>Previews</i>	20
<i>Color Blindness Simulation</i>	23
<i>CSS Examples</i>	26

Color

CIELCh(74, 18.758, 14.515)

Conversions

Conversions Part 1

Format	Color
Hex	DAAAAE
RGB	218, 170, 174
RGB Percent	85%, 67%, 68%
CMY	0.1451, 0.3334, 0.3177
CMYK	0.00, 0.22, 0.20, 0.15
HSL	355°, 39%, 76%
HSV	355°, 22%, 85%
XYZ	50.9209, 46.7039, 46.3691
YIQ	184.8080, 27.3240, 11.4200

Conversions

Conversions Part 2

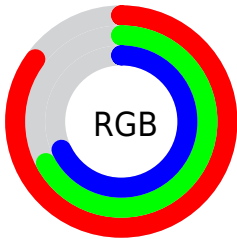
Format	Color
RYB	218, 170, 174
Decimal	14330542
CIELab	74.00, 18.16, 4.70
CIELCh	74, 18.758, 14.515
Yxy	46.7039, 0.3536, 0.3243
Android (android.graphics.Color)	4292520622 (0xFFDAAA AE)
YUV	184.8080, -5.3283, 29.1094
Hunter-Lab	68.3403, 13.4064, 7.6097

Details

The CIELCh color **74, 18.758, 14.515** is a light color, and the websafe version is hex **CC9999**. A complement of this color would be **84, 16.589, 190.917**, and the grayscale version is **75, 0.009, 296.813**.

A 20% lighter version of the original color is **92, 11.095, 9.475**, and **54, 18.443, 14.488** is the 20% darker color. If you saturate the color by 10%, you get **68, 28.141, 15.821**, and if you desaturate by 10%, it is **80, 9.901, 13.458**.

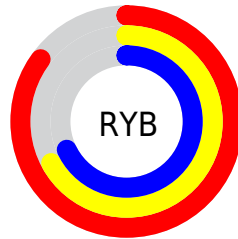
Distribution



Red (85%)

Green (67%)

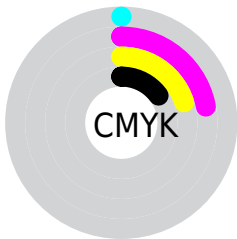
Blue (68%)



Red (85%)

Yellow (67%)

Blue (68%)

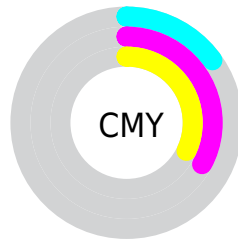


Cyan (0%)

Magenta (22%)

Yellow (20%)

Black (15%)



Cyan (15%)

Magenta (33%)

Yellow (32%)

Brightness & Saturation Gradients

These gradients show how the CIELCh color 74, 18.758, 14.515 changes by changing the brightness by 10 percent. The first figure shows a shift by +10% for each color and the second figure -10%.

Similar to the brightness gradients but the following saturation gradients show a change of the CIELCh color 74, 18.758, 14.515 by changing the saturation by 10% instead.

74, 18.758, 14.515

74, 18.758, 14.515

100, 18.758,
14.515

64, 18.758, 14.515

94, 18.758, 14.515

54, 18.758, 14.515

44, 18.758, 14.515

34, 18.758, 14.515

24, 18.758, 14.515

14, 18.758, 14.515

4, 18.758, 14.515

0, 18.758, 14.515

74, 18.758, 14.515

74, 18.758, 14.515

68, 28.141, 15.821

80, 9.901, 13.458

63, 37.957, 17.457

86, 1.608, 12.313

58, 48.017, 19.543

92, 6.134, 192.064

54, 58.040, 22.206

97, 12.502,
196.139

50, 67.685, 25.558

97, 12.453,
198.674

48, 76.609, 29.595

46, 84.412, 34.006

46, 89.438, 37.105

Harmonies

Complementary

The Complementary color scheme is a pair of colors which are on the opposite of each other on the color wheel.



74, 18.758, 14.515



84, 16.589, 190.917

Rectangle

The Rectangle color scheme consists of four colors that form a rectangle on the color wheel.



74, 18.758, 14.515



74, 18.758, 64.515



74, 18.758, 194.515



74, 18.758, 244.515

Sweetspot

The Sweet Spot groups the original color and five complimentary colors.



74, 18.756, 14.521



95, 6.440, 12.976



75, 30.286, 323.263



50, 4.193, 13.036



0, 0.000, 0.000



53, 0.007, 296.813

Same Dimension

The Same Dimension uses a secret algorithm to generate beautiful new colors.



74, 18.756, 14.521



83, 25.496, 15.034



79, 15.367, 63.537



43, 4.659, 13.207



36, 74.813, 36.462



5, 23.740, 16.676

Inverse Universe

The Inverse Universe completely reimagines the original color for something new.



74, 18.756, 14.521



83, 25.496, 15.034



78, 14.044, 248.819



43, 4.659, 13.207



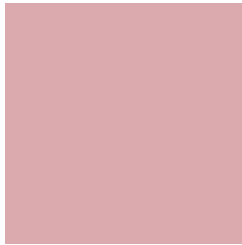
36, 74.813, 36.462



5, 23.740, 16.676

Previews

White Background



This preview shows how the CIELCh color 74, 18.758, 14.515 looks on a white background.

Color Contrast Check

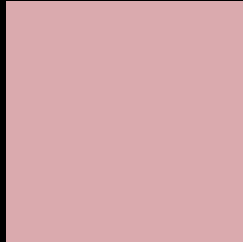
Large Text (above 18pt) WCAG AA × Fail

Any Text WCAG AA × Fail

Large Text (above 18pt) WCAG AAA × Fail

Any Text WCAG AAA × Fail

Black Background



This preview shows how the CIELCh color 74, 18.758, 14.515 looks on a black background.

Color Contrast Check

Large Text (above 18pt) WCAG AA ✓ Pass

Any Text WCAG AA ✓ Pass

Large Text (above 18pt) WCAG AAA ✓ Pass

Any Text WCAG AAA ✓ Pass

If you want to check with other color combinations, try the [Color Contrast Checker](#).

CIELCh 74, 18.758, 14.515

Background



This preview shows how black text looks on a background with the CIELCh color 74, 18.758, 14.515.



This preview shows how white text looks on a background with the CIELCh color 74, 18.758, 14.515.

Color Blindness Simulation

Color vision deficiency is a very complex topic, and I could not describe the different causes any better than Wikipedia does, so if you want to learn more, you should check out their [article about color blindness](#).

Dichromacy



Original Color

74, 18.758, 14.515

Protanopia

74, 1.944, 35.400

Deuteranopia

74, 10.557, 28.992



Tritanopia
74, 20.302, 1.186

Trichromacy



Original Color
74, 18.758, 14.515

Protanomaly
74, 8.014, 16.177

Deuteranomaly
74, 13.189, 22.820

Tritanomaly
74, 19.926, 5.621

Monochromacy



Original Color
74, 18.758, 14.515

Achromatopsia
75, 0.009, 296.813

Achromatomaly
75, 6.454, 15.093

CSS Examples

Text

The CSS property to change the color of the text to CIELCh 74, 18.758, 14.515 is called "color". The color property can be set on classes, ids or directly on the HTML element.

This example shows how text in the color `rgb(218, 170, 174)` looks like.

```
.text, #text, p{  
    color:rgb(218, 170, 174)  
}
```

If you want to add a text shadow in that color use the text-shadow property, you can generate a text shadow directly with our [CSS Text Shadow Generator](#).

Here you see how black text with a 4 pixel rgb(218, 170, 174) colored shadow looks like.

```
.shadow{ text-shadow: 4px 4px 2px rgb(218, 170, 174) }
```

Border

The CSS property to change the border of an element to CIELCh 74, 18.758, 14.515 is called "border". The border property can be set on classes, ids or directly on the HTML element.

This example shows the color as border, it can be applied via the CSS property "border" or "border-color".

```
.border, #border, table{ border:4px solid rgb(218, 170, 174) }
```

If only the border color should be changed use the property `border-color`.

```
.border{ border-color:rgb(218, 170, 174) }
```

If you want to add a box shadow in that color use:

Here you see how a box with a 4 pixel `rgb(218, 170, 174)` colored shadow looks like.

```
.boxshadow{ -moz-box-shadow:4px 4px 4px  
4px rgb(218, 170, 174); -webkit-box-  
shadow:4px 4px 4px 4px rgb(218, 170, 174);  
box-shadow:4px 4px 4px 4px rgb(218, 170,  
174) }
```

Background

The CSS property to change the background color of an element to CIELCh 74, 18.758, 14.515 is called "background". The background property can be set on classes, ids or directly on the HTML element.

```
.background, #background, body{  
background: rgb(218, 170, 174) }
```

If only the background color should be changed can be used:

```
.background{ background-color: rgb(218,  
170, 174) }
```

This example shows the color as background, it is applied via the CSS property "background".

To optimize and compress your CSS code, you can use our [online CSS compressor and optimizer](#) based on csstidy. If you want to create a linear or radial gradient as background or border, check our [CSS Gradient Generator](#).

Hey! You found this booklet interesting? Support Converting Colors with the new Membership Option!

The pro membership hides all ads, plus gives you double the colors in the color bucket, and more awesome pro features!

[Learn more, Memberships starting at \\$2.50/m!](#)

**Follow me
on Twitter!**

@ConvertingColor