

Converting Colors

CIELCh(74, 19.229, 3.035)

Have a look what the booklet for
CIELCh(74, 19.229, 3.035) contains.

CIELCh(74, 18.901, 2.933)	3
<i>Conversions</i>	4
<i>Details</i>	6
<i>Harmonies</i>	11
<i>Previews</i>	20
<i>Color Blindness Simulation</i>	23
<i>CSS Examples</i>	26

Color

CIELCh(74, 18.901, 2.933)

Conversions

Conversions Part 1

Format	Color
Hex	D9AAB5
RGB	217, 170, 181
RGB Percent	85%, 67%, 71%
CMY	0.1500, 0.3342, 0.2911
CMYK	0.00, 0.22, 0.17, 0.15
HSL	346°, 38%, 76%
HSV	346°, 22%, 85%
XYZ	51.1911, 46.7039, 49.9077
YIQ	185.3070, 24.4810, 13.3850

Conversions

Conversions Part 2

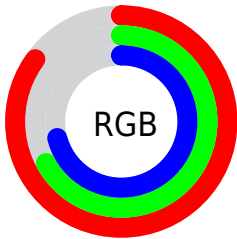
Format	Color
R_{YB}	217, 170, 181
Decimal	14265013
CIE _{Lab}	74.00, 18.88, 0.97
CIE _{LCh}	74, 18.901, 2.933
Yxy	46.7039, 0.3463, 0.3160
Android (android.graphics.Color)	4292455093 (0xFFD9AAB5)
YUV	185.3070, -2.1234, 27.7948
Hunter-Lab	68.3403, 14.1121, 4.5397

Details

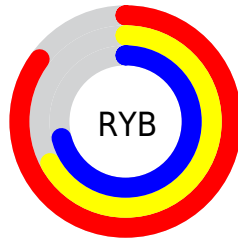
The CIELCh color $74, 18.901, 2.933$ is a light color, and the websafe version is hex `CC9999`. A complement of this color would be $83, 17.461, 178.683$, and the grayscale version is $75, 0.009, 296.813$.

A 20% lighter version of the original color is $92, 12.435, 350.468$, and $54, 18.840, 4.082$ is the 20% darker color. If you saturate the color by 10%, you get $68, 28.167, 4.308$, and if you desaturate by 10%, it is $80, 9.949, 1.770$.

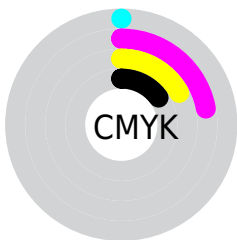
Distribution



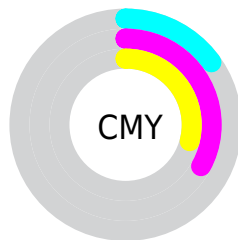
- Red (85%)
- Green (67%)
- Blue (71%)



- Red (85%)
- Yellow (67%)
- Blue (71%)



- Cyan (0%)
- Magenta (22%)
- Yellow (17%)
- Black (15%)



- Cyan (15%)
- Magenta (33%)
- Yellow (29%)

Brightness & Saturation Gradients

These gradients show how the CIELCh color 74, 18.901, 2.933 changes by changing the brightness by 10 percent. The first figure shows a shift by +10% for each color and the second figure -10%.

Similar to the brightness gradients but the following saturation gradients show a change of the CIELCh color 74, 18.901, 2.933 by changing the saturation by 10% instead.

 74, 18.901, 2.933  74, 18.901, 2.933

 100, 18.901, 2.933  64, 18.901, 2.933

 94, 18.901, 2.933  54, 18.901, 2.933

 44, 18.901, 2.933

 34, 18.901, 2.933

 24, 18.901, 2.933

 14, 18.901, 2.933

 4, 18.901, 2.933

 0, 18.901, 2.933

 74, 18.901, 2.933  74, 18.901, 2.933

68, 28.167, 4.308

80, 9.949, 1.770

63, 37.597, 5.966

86, 1.396, 0.466

58, 46.940, 8.017

92, 6.730, 180.077

54, 55.850, 10.597

97, 13.709,
181.588

51, 63.934, 13.867

97, 12.849,
198.648

48, 70.884, 17.973

46, 76.634, 22.947

46, 80.848, 27.441

Harmonies

Complementary

The Complementary color scheme is a pair of colors which are on the opposite of each other on the color wheel.



74, 18.901, 2.933



83, 17.461, 178.683

Rectangle

The Rectangle color scheme consists of four colors that form a rectangle on the color wheel.



74, 18.901, 2.933



74, 18.901, 52.933



74, 18.901, 182.933



74, 18.901, 232.933

Sweetspot

The Sweet Spot groups the original color and five complimentary colors.



74, 18.899, 2.937



95, 6.730, 1.266



74, 28.415, 318.226



50, 4.379, 1.333



0, 0.000, 0.000



53, 0.007, 296.813

Same Dimension

The Same Dimension uses a secret algorithm to generate beautiful new colors.



74, 18.899, 2.937



83, 26.110, 3.533



77, 15.258, 44.563



43, 4.857, 1.525



36, 67.961, 26.504



5, 23.777, 10.145

Inverse Universe

The Inverse Universe completely reimagines the original color for something new.



74, 18.899, 2.937



83, 26.110, 3.533



80, 13.305, 226.840



43, 4.857, 1.525



36, 67.961, 26.504



5, 23.777, 10.145

Previews

White Background



This preview shows how the CIELCh color 74, 18.901, 2.933 looks on a white background.

Color Contrast Check

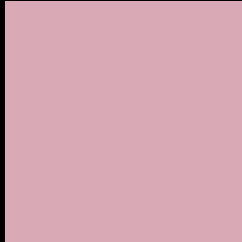
Large Text (above 18pt) WCAG AA × Fail

Any Text WCAG AA × Fail

Large Text (above 18pt) WCAG AAA × Fail

Any Text WCAG AAA × Fail

Black Background



This preview shows how the CIELCh color 74, 18.901, 2.933 looks on a black background.

Color Contrast Check

Large Text (above 18pt) WCAG AA ✓ Pass

Any Text WCAG AA ✓ Pass

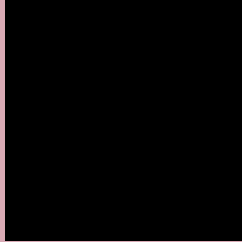
Large Text (above 18pt) WCAG AAA ✓ Pass

Any Text WCAG AAA ✓ Pass

If you want to check with other color combinations, try the [Color Contrast Checker](#).

CIELCh 74, 18.901, 2.933

Background



This preview shows how black text looks on a background with the CIELCh color 74, 18.901, 2.933.



This preview shows how white text looks on a background with the CIELCh color 74, 18.901, 2.933.

Color Blindness Simulation

Color vision deficiency is a very complex topic, and I could not describe the different causes any better than Wikipedia does, so if you want to learn more, you should check out their [article about color blindness](#).

Dichromacy



Original Color

74, 18.901, 2.933

Protanopia

74, 3.452, 309.174

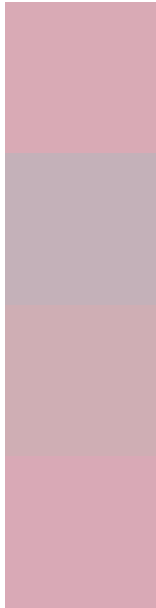
Deuteranopia

74, 9.746, 7.449



Tritanopia
74, 19.738, 358.830

Trichromacy



Original Color
74, 18.901, 2.933

Protanomaly
74, 8.353, 348.949

Deuteranomaly
74, 12.996, 6.161

Tritanomaly
74, 19.575, 0.313

Monochromacy



Original Color
74, 18.901, 2.933

Achromatopsia
75, 0.009, 296.813

Achromatomaly
75, 7.125, 2.360

CSS Examples

Text

The CSS property to change the color of the text to CIELCh 74, 18.901, 2.933 is called "color". The color property can be set on classes, ids or directly on the HTML element.

This example shows how text in the color `rgb(217, 170, 181)` looks like.

```
.text, #text, p{  
    color:rgb(217, 170, 181)  
}
```

If you want to add a text shadow in that color use the text-shadow property, you can generate a text shadow directly with our [CSS Text Shadow Generator](#).

Here you see how black text with a 4 pixel rgb(217, 170, 181) colored shadow looks like.

```
.shadow{ text-shadow: 4px 4px 2px rgb(217, 170, 181) }
```

Border

The CSS property to change the border of an element to CIELCh 74, 18.901, 2.933 is called "border". The border property can be set on classes, ids or directly on the HTML element.

This example shows the color as border, it can be applied via the CSS property "border" or "border-color".

```
.border, #border, table{ border:4px solid rgb(217, 170, 181) }
```

If only the border color should be changed use the property border-color.

```
.border{ border-color:rgb(217, 170, 181) }
```

If you want to add a box shadow in that color use:

Here you see how a box with a 4 pixel rgb(217, 170, 181) colored shadow looks like.

```
.boxshadow{ -moz-box-shadow:4px 4px 4px  
4px rgb(217, 170, 181); -webkit-box-  
shadow:4px 4px 4px 4px rgb(217, 170, 181);  
box-shadow:4px 4px 4px 4px rgb(217, 170,  
181) }
```

Background

The CSS property to change the background color of an element to CIELCh 74, 18.901, 2.933 is called "background". The background property can be set on classes, ids or directly on the HTML element.

```
.background, #background, body{  
background: rgb(217, 170, 181) }
```

If only the background color should be changed can be used:

```
.background{ background-color: rgb(217,  
170, 181) }
```

This example shows the color as background, it is applied via the CSS property "background".

To optimize and compress your CSS code, you can use our [online CSS compressor and optimizer](#) based on csstidy. If you want to create a linear or radial gradient as background or border, check our [CSS Gradient Generator](#).

Hey! You found this booklet interesting? Support Converting Colors with the new Membership Option!

The pro membership hides all ads, plus gives you double the colors in the color bucket, and more awesome pro features!

[Learn more, Memberships starting at \\$2.50/m!](#)

**Follow me
on Twitter!**

@ConvertingColor