

Converting Colors

CIELCh(74, 19.243, 38.433)

Have a look what the booklet for
CIELCh(74, 19.243, 38.433) contains.

CIELCh(74, 19.008, 38.814)	3
<i>Conversions</i>	4
<i>Details</i>	6
<i>Harmonies</i>	11
<i>Previews</i>	20
<i>Color Blindness Simulation</i>	23
<i>CSS Examples</i>	26

Color

CIELCh(74, 19.008, 38.814)

Conversions

Conversions Part 1

Format	Color
Hex	D9ACA1
RGB	217, 172, 161
RGB Percent	85%, 67%, 63%
CMY	0.1499, 0.3263, 0.3695
CMYK	0.00, 0.21, 0.26, 0.15
HSL	12°, 42%, 74%
HSV	12°, 26%, 85%
XYZ	49.6716, 46.7039, 40.0156
YIQ	184.2010, 30.3510, 6.1190

Conversions

Conversions Part 2

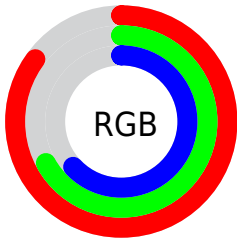
Format	Color
RYB	217, 175, 161
Decimal	14265505
CIELab	74.00, 14.81, 11.91
CIELCh	74, 19.008, 38.814
Yxy	46.7039, 0.3642, 0.3424
Android (android.graphics.Color)	4292455585 (0xFFD9ACA1)
YUV	184.2010, -11.4381, 28.7647
Hunter-Lab	68.3403, 10.1433, 13.1218

Details

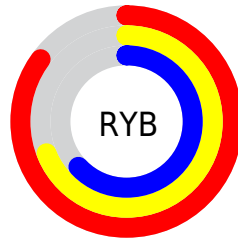
The CIELCh color **74, 19.008, 38.814** is a light color, and the websafe version is hex **CC9999**. A complement of this color would be **80, 15.942, 220.133**, and the grayscale version is **75, 0.009, 296.813**.

A 20% lighter version of the original color is **92, 11.850, 48.432**, and **54, 18.952, 40.399** is the 20% darker color. If you saturate the color by 10%, you get **69, 27.494, 38.988**, and if you desaturate by 10%, it is **79, 11.171, 38.798**.

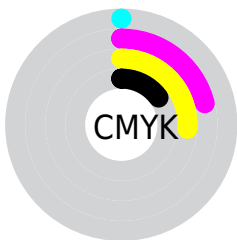
Distribution



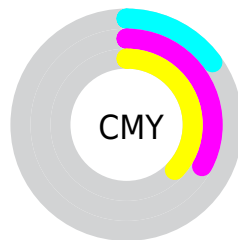
- Red (85%)
- Green (67%)
- Blue (63%)



- Red (85%)
- Yellow (69%)
- Blue (63%)



- Cyan (0%)
- Magenta (21%)
- Yellow (26%)
- Black (15%)



- Cyan (15%)
- Magenta (33%)
- Yellow (37%)


Brightness & Saturation Gradients

These gradients show how the CIELCh color 74, 19.008, 38.814 changes by changing the brightness by 10 percent. The first figure shows a shift by +10% for each color and the second figure -10%.

Similar to the brightness gradients but the following saturation gradients show a change of the CIELCh color 74, 19.008, 38.814 by changing the saturation by 10% instead.

 74, 19.008, 38.814

 74, 19.008, 38.814

 100, 19.008,
38.814

 64, 19.008, 38.814

 94, 19.008, 38.814

 54, 19.008, 38.814

 44, 19.008, 38.814

 34, 19.008, 38.814

 24, 19.008, 38.814

 14, 19.008, 38.814

 4, 19.008, 38.814

 0, 19.008, 38.814

 74, 19.008, 38.814

 74, 19.008, 38.814

69, 27.494, 38.988

79, 11.171, 38.798

65, 36.645, 39.343

84, 3.946, 38.819

61, 46.423, 39.925

89, 2.721, 219.383

57, 56.704, 40.747

94, 8.888, 219.507

53, 67.192, 41.753

97, 12.845,
198.648

51, 77.220, 42.713

48, 85.364, 43.033

48, 88.216, 43.145

Harmonies

Complementary

The Complementary color scheme is a pair of colors which are on the opposite of each other on the color wheel.



74, 19.008, 38.814



80, 15.942, 220.133

Rectangle

The Rectangle color scheme consists of four colors that form a rectangle on the color wheel.



74, 19.008, 38.814



74, 19.008, 88.814



74, 19.008, 218.814



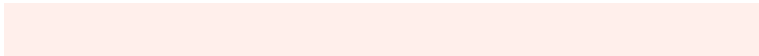
74, 19.008, 268.814

Sweetspot

The Sweet Spot groups the original color and five complimentary colors.



74, 19.007, 38.822



95, 6.239, 38.826



73, 31.931, 331.570



50, 4.462, 38.823



0, 0.000, 0.000



53, 0.007, 296.813

Same Dimension

The Same Dimension uses a secret algorithm to generate beautiful new colors.



74, 19.007, 38.822



83, 26.631, 38.892



81, 21.435, 89.153



43, 3.940, 38.823



38, 74.312, 43.508



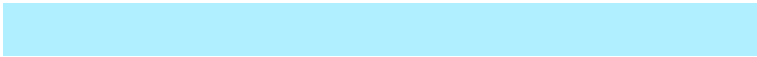
7, 20.978, 31.118

Inverse Universe

The Inverse Universe completely reimagines the original color for something new.



80, 15.942, 220.133



91, 21.401, 220.503



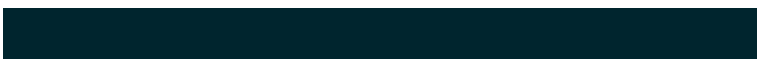
73, 21.421, 276.263



45, 3.714, 219.420



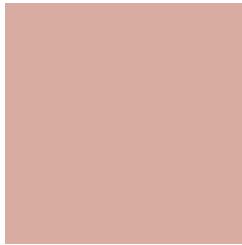
54, 32.837, 234.606



13, 13.096, 227.249

Previews

White Background



This preview shows how the CIELCh color 74, 19.008, 38.814 looks on a white background.

Color Contrast Check

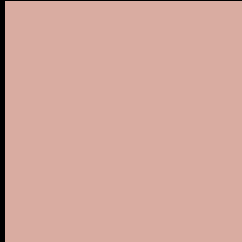
Large Text (above 18pt) WCAG AA × Fail

Any Text WCAG AA × Fail

Large Text (above 18pt) WCAG AAA × Fail

Any Text WCAG AAA × Fail

Black Background



This preview shows how the CIE LCh color 74, 19.008, 38.814 looks on a black background.

Color Contrast Check

Large Text (above 18pt) WCAG AA ✓ Pass

Any Text WCAG AA ✓ Pass

Large Text (above 18pt) WCAG AAA ✓ Pass

Any Text WCAG AAA ✓ Pass

If you want to check with other color combinations, try the [Color Contrast Checker](#).

CIELCh 74, 19.008, 38.814

Background



This preview shows how black text looks on a background with the CIELCh color 74, 19.008, 38.814.

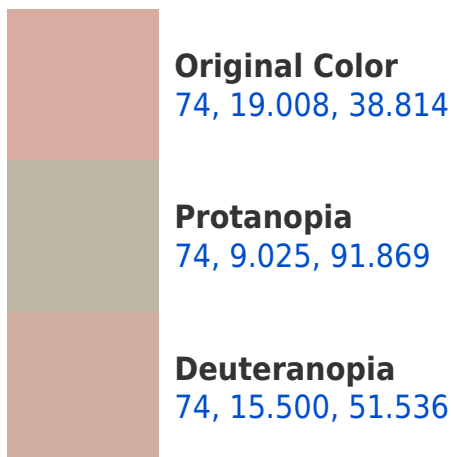


This preview shows how white text looks on a background with the CIELCh color 74, 19.008, 38.814.

Color Blindness Simulation

Color vision deficiency is a very complex topic, and I could not describe the different causes any better than Wikipedia does, so if you want to learn more, you should check out their [article about color blindness](#).

Dichromacy





Tritanopia
74, 20.302, 1.186

Trichromacy



Original Color
74, 19.008, 38.814

Protanomaly
74, 11.195, 62.086

Deuteranomaly
74, 16.658, 47.203

Tritanomaly
74, 18.758, 14.515

Monochromacy



Original Color
74, 19.008, 38.814

Achromatopsia
75, 0.009, 296.813

Achromatomaly
75, 6.469, 39.208

CSS Examples

Text

The CSS property to change the color of the text to CIELCh 74, 19.008, 38.814 is called "color". The color property can be set on classes, ids or directly on the HTML element.

This example shows how text in the color `rgb(217, 172, 161)` looks like.

```
.text, #text, p{  
    color:rgb(217, 172, 161)  
}
```

If you want to add a text shadow in that color use the text-shadow property, you can generate a text shadow directly with our [CSS Text Shadow Generator](#).

Here you see how black text with a 4 pixel rgb(217, 172, 161) colored shadow looks like.

```
.shadow{ text-shadow: 4px 4px 2px rgb(217, 172, 161) }
```

Border

The CSS property to change the border of an element to CIELCh 74, 19.008, 38.814 is called "border". The border property can be set on classes, ids or directly on the HTML element.

This example shows the color as border, it can be applied via the CSS property "border" or "border-color".

```
.border, #border, table{ border:4px solid rgb(217, 172, 161) }
```

If only the border color should be changed use the property `border-color`.

```
.border{ border-color:rgb(217, 172, 161) }
```

If you want to add a box shadow in that color use:

Here you see how a box with a 4 pixel `rgb(217, 172, 161)` colored shadow looks like.

```
.boxshadow{ -moz-box-shadow:4px 4px 4px  
4px rgb(217, 172, 161); -webkit-box-  
shadow:4px 4px 4px 4px rgb(217, 172, 161);  
box-shadow:4px 4px 4px 4px rgb(217, 172,  
161) }
```

Background

The CSS property to change the background color of an element to CIELCh 74, 19.008, 38.814 is called "background". The background property can be set on classes, ids or directly on the HTML element.

```
.background, #background, body{  
background: rgb(217, 172, 161) }
```

If only the background color should be changed can be used:

```
.background{ background-color: rgb(217,  
172, 161) }
```

This example shows the color as background, it is applied via the CSS property "background".

To optimize and compress your CSS code, you can use our [online CSS compressor and optimizer](#) based on csstidy. If you want to create a linear or radial gradient as background or border, check our [CSS Gradient Generator](#).

Hey! You found this booklet interesting? Support Converting Colors with the new Membership Option!

The pro membership hides all ads, plus gives you double the colors in the color bucket, and more awesome pro features!

[Learn more, Memberships starting at \\$2.50/m!](#)

**Follow me
on Twitter!**

@ConvertingColor