

Converting Colors

CIELCh(74, 19.264, 32.303)

Have a look what the booklet for
CIELCh(74, 19.264, 32.303) contains.

CIELCh(74, 19.092, 32.223)	3
<i>Conversions</i>	4
<i>Details</i>	6
<i>Harmonies</i>	11
<i>Previews</i>	20
<i>Color Blindness Simulation</i>	23
<i>CSS Examples</i>	26

Color

CIELCh(74, 19.092, 32.223)

Conversions

Conversions Part 1

Format	Color
Hex	DAABA4
RGB	218, 171, 164
RGB Percent	85%, 67%, 64%
CMY	0.1452, 0.3294, 0.3569
CMYK	0.00, 0.22, 0.25, 0.15
HSL	8°, 42%, 75%
HSV	8°, 25%, 85%
XYZ	50.1693, 46.7039, 41.4863
YIQ	184.2550, 30.2590, 7.7870

Conversions

Conversions Part 2

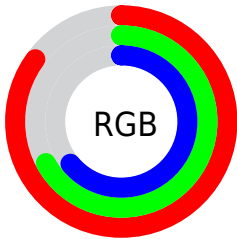
Format	Color
RYB	218, 172, 164
Decimal	14330788
CIELab	74.00, 16.15, 10.18
CIELCh	74, 19.092, 32.223
Yxy	46.7039, 0.3626, 0.3376
Android (android.graphics.Color)	4292520868 (0xFFDAABA4)
YUV	184.2550, -9.9857, 29.5944
Hunter-Lab	68.3403, 11.4433, 11.8459

Details

The CIELCh color **74, 19.092, 32.223** is a light color, and the websafe version is hex **CC9999**. A complement of this color would be **82, 16.067, 211.811**, and the grayscale version is **75, 0.009, 296.813**.

A 20% lighter version of the original color is **92, 11.308, 38.579**, and **54, 18.964, 33.444** is the 20% darker color. If you saturate the color by 10%, you get **69, 27.934, 32.776**, and if you desaturate by 10%, it is **79, 10.917, 31.865**.

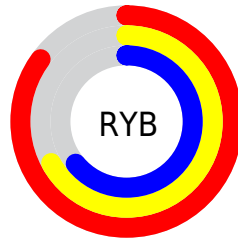
Distribution



Red (85%)

Green (67%)

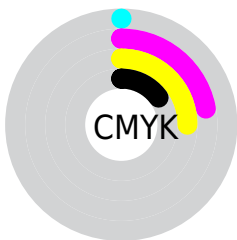
Blue (64%)



Red (85%)

Yellow (67%)

Blue (64%)

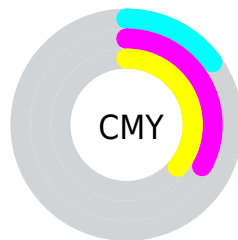


Cyan (0%)

Magenta (22%)

Yellow (25%)

Black (15%)



Cyan (15%)

Magenta (33%)

Yellow (36%)


Brightness & Saturation Gradients

These gradients show how the CIELCh color 74, 19.092, 32.223 changes by changing the brightness by 10 percent. The first figure shows a shift by +10% for each color and the second figure -10%.

Similar to the brightness gradients but the following saturation gradients show a change of the CIELCh color 74, 19.092, 32.223 by changing the saturation by 10% instead.

 74, 19.092, 32.223

 74, 19.092, 32.223

 100, 19.092,
32.223

 64, 19.092, 32.223

 94, 19.092, 32.223

 54, 19.092, 32.223

 44, 19.092, 32.223

 34, 19.092, 32.223

 24, 19.092, 32.223

 14, 19.092, 32.223

 4, 19.092, 32.223

 0, 19.092, 32.223

 74, 19.092, 32.223

 74, 19.092, 32.223

69, 27.934, 32.776

79, 10.917, 31.865

64, 37.443, 33.564

84, 3.383, 31.551

60, 47.555, 34.655

90, 3.562, 211.810

56, 58.117, 36.086

95, 9.976, 211.705

52, 68.819, 37.833

97, 12.453,
198.674

49, 79.023, 39.680

47, 87.324, 40.998

47, 90.680, 41.533

Harmonies

Complementary

The Complementary color scheme is a pair of colors which are on the opposite of each other on the color wheel.



74, 19.092, 32.223



82, 16.067, 211.811

Rectangle

The Rectangle color scheme consists of four colors that form a rectangle on the color wheel.



74, 19.092, 32.223



74, 19.092, 82.223



74, 19.092, 212.223



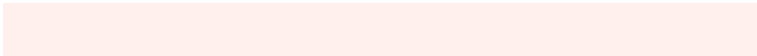
74, 19.092, 262.223

Sweetspot

The Sweet Spot groups the original color and five complimentary colors.



74, 19.090, 32.230



96, 5.690, 31.642



74, 32.221, 329.240



51, 3.706, 31.662



0, 0.000, 0.000



53, 0.007, 296.813

Same Dimension

The Same Dimension uses a secret algorithm to generate beautiful new colors.



74, 19.090, 32.230



82, 26.866, 32.504



81, 19.482, 83.694



43, 4.123, 31.714



37, 76.132, 41.791



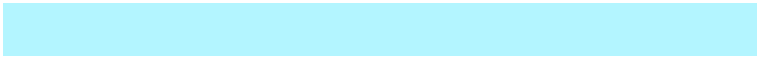
6, 21.877, 27.092

Inverse Universe

The Inverse Universe completely reimagines the original color for something new.



82, 16.067, 211.811



93, 21.645, 211.936



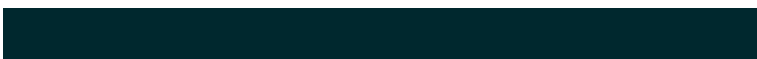
75, 19.062, 270.675



45, 3.880, 211.722



57, 32.849, 220.199



14, 13.358, 215.588

Previews

White Background



This preview shows how the CIELCh color 74, 19.092, 32.223 looks on a white background.

Color Contrast Check

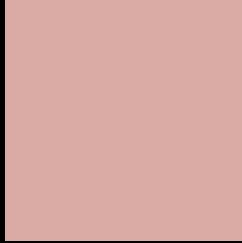
Large Text (above 18pt) WCAG AA × Fail

Any Text WCAG AA × Fail

Large Text (above 18pt) WCAG AAA × Fail

Any Text WCAG AAA × Fail

Black Background



This preview shows how the CIE LCh color 74, 19.092, 32.223 looks on a black background.

Color Contrast Check

Large Text (above 18pt) WCAG AA ✓ Pass

Any Text WCAG AA ✓ Pass

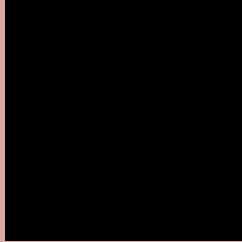
Large Text (above 18pt) WCAG AAA ✓ Pass

Any Text WCAG AAA ✓ Pass

If you want to check with other color combinations, try the [Color Contrast Checker](#).

CIELCh 74, 19.092, 32.223

Background



This preview shows how black text looks on a background with the CIELCh color 74, 19.092, 32.223.



This preview shows how white text looks on a background with the CIELCh color 74, 19.092, 32.223.

Color Blindness Simulation

Color vision deficiency is a very complex topic, and I could not describe the different causes any better than Wikipedia does, so if you want to learn more, you should check out their [article about color blindness](#).

Dichromacy



Original Color

74, 19.092, 32.223

Protanopia

74, 6.498, 85.184

Deuteranopia

74, 14.172, 49.693



Tritanopia
74, 21.056, 2.017

Trichromacy



Original Color
74, 19.092, 32.223

Protanomaly
74, 9.851, 49.393

Deuteranomaly
74, 15.882, 42.266

Tritanomaly
74, 19.629, 11.753

Monochromacy



Original Color
74, 19.092, 32.223

Achromatopsia
75, 0.009, 296.813

Achromatomaly
74, 6.560, 29.289

CSS Examples

Text

The CSS property to change the color of the text to CIELCh 74, 19.092, 32.223 is called "color". The color property can be set on classes, ids or directly on the HTML element.

This example shows how text in the color `rgb(218, 171, 164)` looks like.

```
.text, #text, p{  
    color:rgb(218, 171, 164)  
}
```

If you want to add a text shadow in that color use the text-shadow property, you can generate a text shadow directly with our [CSS Text Shadow Generator](#).

Here you see how black text with a 4 pixel rgb(218, 171, 164) colored shadow looks like.

```
.shadow{ text-shadow: 4px 4px 2px rgb(218, 171, 164) }
```

Border

The CSS property to change the border of an element to CIELCh 74, 19.092, 32.223 is called "border". The border property can be set on classes, ids or directly on the HTML element.

This example shows the color as border, it can be applied via the CSS property "border" or "border-color".

```
.border, #border, table{ border:4px solid rgb(218, 171, 164) }
```

If only the border color should be changed use the property `border-color`.

```
.border{ border-color:rgb(218, 171, 164) }
```

If you want to add a box shadow in that color use:

Here you see how a box with a 4 pixel `rgb(218, 171, 164)` colored shadow looks like.

```
.boxshadow{ -moz-box-shadow:4px 4px 4px  
4px rgb(218, 171, 164); -webkit-box-  
shadow:4px 4px 4px 4px rgb(218, 171, 164);  
box-shadow:4px 4px 4px 4px rgb(218, 171,  
164) }
```

Background

The CSS property to change the background color of an element to CIELCh 74, 19.092, 32.223 is called "background". The background property can be set on classes, ids or directly on the HTML element.

```
.background, #background, body{  
background: rgb(218, 171, 164) }
```

If only the background color should be changed can be used:

```
.background{ background-color: rgb(218,  
171, 164) }
```

This example shows the color as background, it is applied via the CSS property "background".

To optimize and compress your CSS code, you can use our [online CSS compressor and optimizer](#) based on csstidy. If you want to create a linear or radial gradient as background or border, check our [CSS Gradient Generator](#).

Hey! You found this booklet interesting? Support Converting Colors with the new Membership Option!

The pro membership hides all ads, plus gives you double the colors in the color bucket, and more awesome pro features!

[Learn more, Memberships starting at \\$2.50/m!](#)

**Follow me
on Twitter!**

@ConvertingColor