

Converting Colors

CIELCh(74, 19.427, 67.209)

Have a look what the booklet for
CIELCh(74, 19.427, 67.209) contains.

CIELCh(74, 19.232, 66.427)	3
<i>Conversions</i>	4
<i>Details</i>	6
<i>Harmonies</i>	11
<i>Previews</i>	20
<i>Color Blindness Simulation</i>	23
<i>CSS Examples</i>	26

Color

CIELCh(74, 19.232, 66.427)

Conversions

Conversions Part 1

Format	Color
Hex	D0B096
RGB	208, 176, 150
RGB Percent	82%, 69%, 59%
CMY	0.1840, 0.3095, 0.4115
CMYK	0.00, 0.15, 0.28, 0.18
HSL	27°, 38%, 70%
HSV	27°, 28%, 82%
XYZ	47.0837, 46.7039, 35.4166
YIQ	182.6040, 27.4180, -1.3020

Conversions

Conversions Part 2

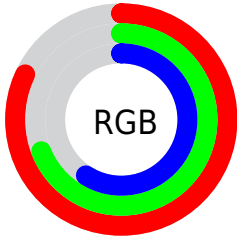
Format	Color
R _Y B	208, 197, 150
Decimal	13676694
CIE Lab	74.00, 7.69, 17.63
CIE LCh	74, 19.232, 66.427
Yxy	46.7039, 0.3644, 0.3615
Android (android.graphics.Color)	4291866774 (0xFFD0B096)
YUV	182.6040, -16.0738, 22.2723
Hunter-Lab	68.3403, 3.3838, 17.1118

Details

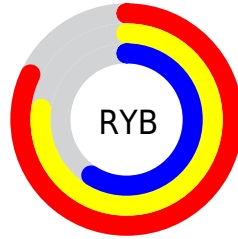
The CIELCh color $74, 19.232, 66.427$ is a light color, and the websafe version is hex `CC9999`. A complement of this color would be $73, 17.376, 253.715$, and the grayscale version is $74, 0.009, 296.813$.

A 20% lighter version of the original color is $93, 16.838, 77.938$, and $54, 19.397, 67.249$ is the 20% darker color. If you saturate the color by 10%, you get $71, 26.885, 65.313$, and if you desaturate by 10%, it is $77, 11.991, 67.560$.

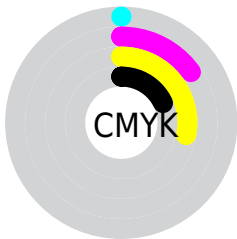
Distribution



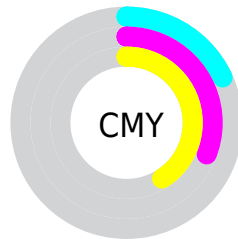
- Red (82%)
- Green (69%)
- Blue (59%)



- Red (82%)
- Yellow (77%)
- Blue (59%)



- Cyan (0%)
- Magenta (15%)
- Yellow (28%)
- Black (18%)



- Cyan (18%)
- Magenta (31%)
- Yellow (41%)


Brightness & Saturation Gradients

These gradients show how the CIELCh color 74, 19.232, 66.427 changes by changing the brightness by 10 percent. The first figure shows a shift by +10% for each color and the second figure -10%.

Similar to the brightness gradients but the following saturation gradients show a change of the CIELCh color 74, 19.232, 66.427 by changing the saturation by 10% instead.

 74, 19.232, 66.427

 74, 19.232, 66.427

 100, 19.232,
66.427

 64, 19.232, 66.427

 94, 19.232, 66.427

 54, 19.232, 66.427

 44, 19.232, 66.427

 34, 19.232, 66.427

 24, 19.232, 66.427

 14, 19.232, 66.427

 4, 19.232, 66.427

 0, 19.232, 66.427

 74, 19.232, 66.427

 74, 19.232, 66.427

71, 26.885, 65.313

77, 11.991, 67.560

68, 34.948, 64.202

81, 5.138, 68.653

64, 43.369, 63.095

84, 1.358, 250.175

62, 51.993, 61.953

88, 7.535, 251.034

59, 60.466, 60.672

91, 13.428,
252.096

56, 68.075, 59.021

94, 13.159,
221.977

54, 73.861, 56.682

53, 75.031, 56.213

97, 15.603,
198.468

Harmonies

Complementary

The Complementary color scheme is a pair of colors which are on the opposite of each other on the color wheel.



74, 19.232, 66.427



73, 17.376, 253.715

Rectangle

The Rectangle color scheme consists of four colors that form a rectangle on the color wheel.



74, 19.232, 66.427



74, 19.232, 116.427



74, 19.232, 246.427



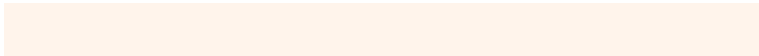
74, 19.232, 296.427

Sweetspot

The Sweet Spot groups the original color and five complimentary colors.



74, 19.232, 66.435



97, 6.159, 68.631



69, 28.121, 342.585



51, 4.396, 68.470



0, 0.000, 0.000



53, 0.007, 296.813

Same Dimension

The Same Dimension uses a secret algorithm to generate beautiful new colors.



74, 19.232, 66.435



87, 27.276, 65.816



81, 28.434, 104.502



42, 3.732, 68.492



43, 63.814, 56.822



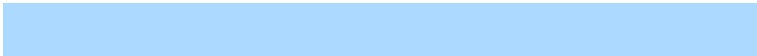
8, 15.802, 52.282

Inverse Universe

The Inverse Universe completely reimagines the original color for something new.



73, 17.376, 253.715



85, 24.086, 254.793



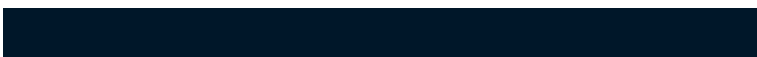
65, 30.114, 290.878



42, 3.623, 250.845



39, 47.338, 278.150



7, 15.102, 266.672

Previews

White Background



This preview shows how the CIELCh color 74, 19.232, 66.427 looks on a white background.

Color Contrast Check

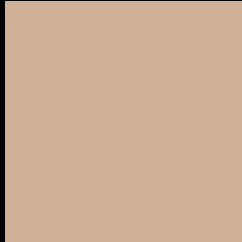
Large Text (above 18pt) WCAG AA × Fail

Any Text WCAG AA × Fail

Large Text (above 18pt) WCAG AAA × Fail

Any Text WCAG AAA × Fail

Black Background



This preview shows how the CIELCh color 74, 19.232, 66.427 looks on a black background.

Color Contrast Check

Large Text (above 18pt) WCAG AA ✓ Pass

Any Text WCAG AA ✓ Pass

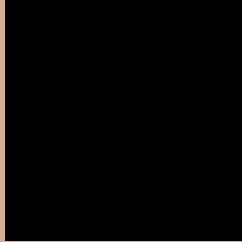
Large Text (above 18pt) WCAG AAA ✓ Pass

Any Text WCAG AAA ✓ Pass

If you want to check with other color combinations, try the [Color Contrast Checker](#).

CIELCh 74, 19.232, 66.427

Background



This preview shows how black text looks on a background with the CIELCh color 74, 19.232, 66.427.



This preview shows how white text looks on a background with the CIELCh color 74, 19.232, 66.427.

Color Blindness Simulation

Color vision deficiency is a very complex topic, and I could not describe the different causes any better than Wikipedia does, so if you want to learn more, you should check out their [article about color blindness](#).

Dichromacy





Tritanopia
74, 17.040, 356.721

Trichromacy



Original Color
74, 19.232, 66.427

Protanomaly
74, 16.749, 83.204

Deuteranomaly
74, 19.739, 62.869

Tritanomaly
74, 14.797, 22.714

Monochromacy



Original Color
74, 19.232, 66.427

Achromatopsia
74, 0.009, 296.813

Achromatomaly
74, 6.683, 66.067

CSS Examples

Text

The CSS property to change the color of the text to CIELCh 74, 19.232, 66.427 is called "color". The color property can be set on classes, ids or directly on the HTML element.

This example shows how text in the color `rgb(208, 176, 150)` looks like.

```
.text, #text, p{  
    color:rgb(208, 176, 150)  
}
```

If you want to add a text shadow in that color use the text-shadow property, you can generate a text shadow directly with our [CSS Text Shadow Generator](#).

Here you see how black text with a 4 pixel rgb(208, 176, 150) colored shadow looks like.

```
.shadow{ text-shadow: 4px 4px 2px rgb(208, 176, 150) }
```

Border

The CSS property to change the border of an element to CIELCh 74, 19.232, 66.427 is called "border". The border property can be set on classes, ids or directly on the HTML element.

This example shows the color as border, it can be applied via the CSS property "border" or "border-color".

```
.border, #border, table{ border:4px solid rgb(208, 176, 150) }
```

If only the border color should be changed use the property `border-color`.

```
.border{ border-color:rgb(208, 176, 150) }
```

If you want to add a box shadow in that color use:

Here you see how a box with a 4 pixel `rgb(208, 176, 150)` colored shadow looks like.

```
.boxshadow{ -moz-box-shadow:4px 4px 4px  
4px rgb(208, 176, 150); -webkit-box-  
shadow:4px 4px 4px 4px rgb(208, 176, 150);  
box-shadow:4px 4px 4px 4px rgb(208, 176,  
150) }
```

Background

The CSS property to change the background color of an element to CIELCh 74, 19.232, 66.427 is called "background". The background property can be set on classes, ids or directly on the HTML element.

```
.background, #background, body{  
background: rgb(208, 176, 150) }
```

If only the background color should be changed can be used:

```
.background{ background-color: rgb(208,  
176, 150) }
```

This example shows the color as background, it is applied via the CSS property "background".

To optimize and compress your CSS code, you can use our [online CSS compressor and optimizer](#) based on csstidy. If you want to create a linear or radial gradient as background or border, check our [CSS Gradient Generator](#).

Hey! You found this booklet interesting? Support Converting Colors with the new Membership Option!

The pro membership hides all ads, plus gives you double the colors in the color bucket, and more awesome pro features!

[Learn more, Memberships starting at \\$2.50/m!](#)

**Follow me
on Twitter!**

@ConvertingColor