

Converting Colors

CIELCh(74, 19.460, 34.637)

Have a look what the booklet for
CIELCh(74, 19.460, 34.637) contains.

CIELCh(74, 19.428, 35.236)	3
<i>Conversions</i>	4
<i>Details</i>	6
<i>Harmonies</i>	11
<i>Previews</i>	20
<i>Color Blindness Simulation</i>	23
<i>CSS Examples</i>	26

Color

CIELCh(74, 19.428, 35.236)

Conversions

Conversions Part 1

Format	Color
Hex	DAABA2
RGB	218, 171, 162
RGB Percent	85%, 67%, 64%
CMY	0.1446, 0.3290, 0.3643
CMYK	0.00, 0.22, 0.26, 0.14
HSL	10°, 43%, 75%
HSV	10°, 26%, 86%
XYZ	50.0640, 46.7039, 40.6095
YIQ	184.0270, 30.9010, 7.1650

Conversions

Conversions Part 2

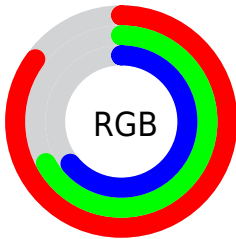
Format	Color
R _Y B	218, 173, 162
Decimal	14330786
CIE Lab	74.00, 15.87, 11.21
CIE LCh	74, 19.428, 35.236
Yxy	46.7039, 0.3644, 0.3400
Android (android.graphics.Color)	4292520866 (0xFFDAABA2)
YUV	184.0270, -10.8593, 29.7943
Hunter-Lab	68.3403, 11.1682, 12.6066

Details

The CIELCh color **74, 19.428, 35.236** is a light color, and the websafe version is hex **CC9999**. A complement of this color would be **81, 16.256, 215.599**, and the grayscale version is **75, 0.009, 296.813**.

A 20% lighter version of the original color is **92, 11.715, 43.263**, and **54, 19.368, 36.609** is the 20% darker color. If you saturate the color by 10%, you get **69, 28.146, 35.624**, and if you desaturate by 10%, it is **79, 11.373, 35.028**.

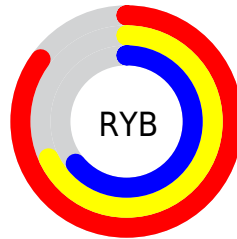
Distribution



Red (85%)

Green (67%)

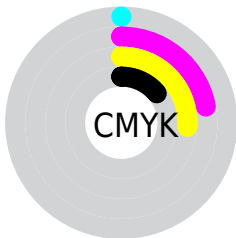
Blue (64%)



Red (85%)

Yellow (68%)

Blue (64%)

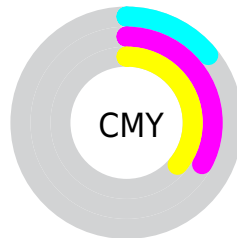


Cyan (0%)

Magenta (22%)

Yellow (26%)

Black (14%)



Cyan (14%)

Magenta (33%)

Yellow (36%)


Brightness & Saturation Gradients

These gradients show how the CIELCh color 74, 19.428, 35.236 changes by changing the brightness by 10 percent. The first figure shows a shift by +10% for each color and the second figure -10%.

Similar to the brightness gradients but the following saturation gradients show a change of the CIELCh color 74, 19.428, 35.236 by changing the saturation by 10% instead.

 74, 19.428, 35.236

 74, 19.428, 35.236

 100, 19.428,
35.236

 64, 19.428, 35.236

 94, 19.428, 35.236

 54, 19.428, 35.236

 44, 19.428, 35.236

 34, 19.428, 35.236

 24, 19.428, 35.236

 14, 19.428, 35.236

 4, 19.428, 35.236

 0, 19.428, 35.236

 74, 19.428, 35.236

 74, 19.428, 35.236

69, 28.146, 35.624

79, 11.373, 35.028

65, 37.535, 36.225

84, 3.951, 34.873

60, 47.542, 37.094

89, 2.892, 215.270

56, 58.025, 38.256

95, 9.214, 215.252

53, 68.672, 39.665

97, 12.411,
198.677

50, 78.806, 41.088

48, 86.960, 41.893

47, 89.834, 42.195

Harmonies

Complementary

The Complementary color scheme is a pair of colors which are on the opposite of each other on the color wheel.



74, 19.428, 35.236



81, 16.256, 215.599

Rectangle

The Rectangle color scheme consists of four colors that form a rectangle on the color wheel.



74, 19.428, 35.236



74, 19.428, 85.236



74, 19.428, 215.236



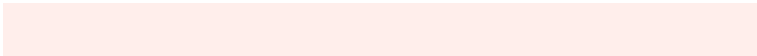
74, 19.428, 265.236

Sweetspot

The Sweet Spot groups the original color and five complimentary colors.



74, 19.427, 35.243



95, 6.382, 34.922



73, 32.654, 330.399



50, 4.564, 34.944



0, 0.000, 0.000



53, 0.007, 296.813

Same Dimension

The Same Dimension uses a secret algorithm to generate beautiful new colors.



74, 19.427, 35.243



82, 27.255, 35.433



81, 20.799, 86.455



43, 4.030, 34.942



37, 75.354, 42.511



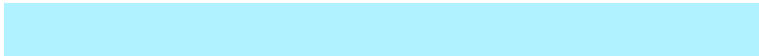
7, 21.448, 28.920

Inverse Universe

The Inverse Universe completely reimagines the original color for something new.



81, 16.256, 215.599



92, 21.812, 215.846



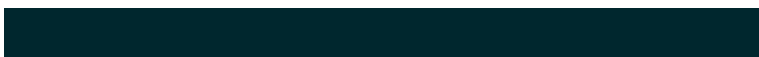
74, 20.568, 273.641



45, 3.794, 215.219



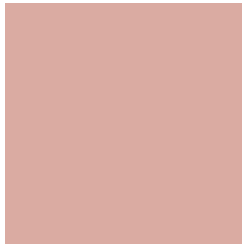
56, 32.608, 226.839



13, 13.175, 220.918

Previews

White Background



This preview shows how the CIELCh color 74, 19.428, 35.236 looks on a white background.

Color Contrast Check

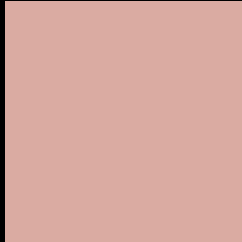
Large Text (above 18pt) WCAG AA × Fail

Any Text WCAG AA × Fail

Large Text (above 18pt) WCAG AAA × Fail

Any Text WCAG AAA × Fail

Black Background



This preview shows how the CIE LCh color 74, 19.428, 35.236 looks on a black background.

Color Contrast Check

Large Text (above 18pt) WCAG AA ✓ Pass

Any Text WCAG AA ✓ Pass

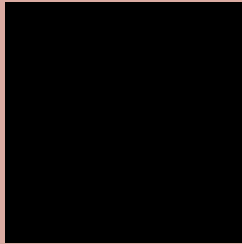
Large Text (above 18pt) WCAG AAA ✓ Pass

Any Text WCAG AAA ✓ Pass

If you want to check with other color combinations, try the [Color Contrast Checker](#).

CIELCh 74, 19.428, 35.236

Background



This preview shows how black text looks on a background with the CIELCh color 74, 19.428, 35.236.

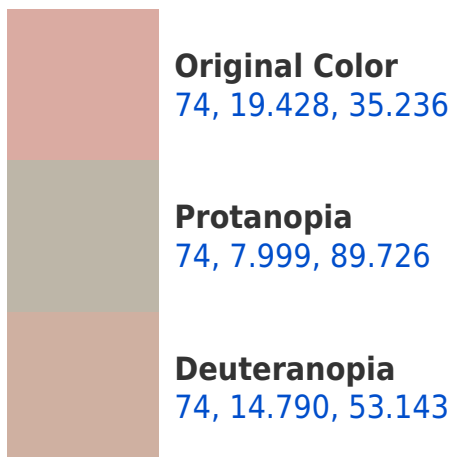


This preview shows how white text looks on a background with the CIELCh color 74, 19.428, 35.236.

Color Blindness Simulation

Color vision deficiency is a very complex topic, and I could not describe the different causes any better than Wikipedia does, so if you want to learn more, you should check out their [article about color blindness](#).

Dichromacy





Tritanopia
74, 21.056, 2.017

Trichromacy



Original Color
74, 19.428, 35.236

Protanomaly
74, 10.781, 56.646

Deuteranomaly
74, 16.386, 45.612

Tritanomaly
74, 19.593, 13.310

Monochromacy



Original Color
74, 19.428, 35.236

Achromatopsia
75, 0.009, 296.813

Achromatomaly
74, 6.682, 33.817

CSS Examples

Text

The CSS property to change the color of the text to CIELCh 74, 19.428, 35.236 is called "color". The color property can be set on classes, ids or directly on the HTML element.

This example shows how text in the color `rgb(218, 171, 162)` looks like.

```
.text, #text, p{  
    color:rgb(218, 171, 162)  
}
```

If you want to add a text shadow in that color use the text-shadow property, you can generate a text shadow directly with our [CSS Text Shadow Generator](#).

Here you see how black text with a 4 pixel rgb(218, 171, 162) colored shadow looks like.

```
.shadow{ text-shadow: 4px 4px 2px rgb(218, 171, 162) }
```

Border

The CSS property to change the border of an element to CIELCh 74, 19.428, 35.236 is called "border". The border property can be set on classes, ids or directly on the HTML element.

This example shows the color as border, it can be applied via the CSS property "border" or "border-color".

```
.border, #border, table{ border:4px solid rgb(218, 171, 162) }
```

If only the border color should be changed use the property `border-color`.

```
.border{ border-color:rgb(218, 171, 162) }
```

If you want to add a box shadow in that color use:

Here you see how a box with a 4 pixel `rgb(218, 171, 162)` colored shadow looks like.

```
.boxshadow{ -moz-box-shadow:4px 4px 4px  
4px rgb(218, 171, 162); -webkit-box-  
shadow:4px 4px 4px 4px rgb(218, 171, 162);  
box-shadow:4px 4px 4px 4px rgb(218, 171,  
162) }
```

Background

The CSS property to change the background color of an element to CIELCh 74, 19.428, 35.236 is called "background". The background property can be set on classes, ids or directly on the HTML element.

```
.background, #background, body{  
background: rgb(218, 171, 162) }
```

If only the background color should be changed can be used:

```
.background{ background-color: rgb(218,  
171, 162) }
```

This example shows the color as background, it is applied via the CSS property "background".

To optimize and compress your CSS code, you can use our [online CSS compressor and optimizer](#) based on csstidy. If you want to create a linear or radial gradient as background or border, check our [CSS Gradient Generator](#).

Hey! You found this booklet interesting? Support Converting Colors with the new Membership Option!

The pro membership hides all ads, plus gives you double the colors in the color bucket, and more awesome pro features!

[Learn more, Memberships starting at \\$2.50/m!](#)

**Follow me
on Twitter!**

@ConvertingColor