

Converting Colors

CIELCh(74, 20.634, 40.870)

Have a look what the booklet for
CIELCh(74, 20.634, 40.870) contains.

CIELCh(74, 20.650, 40.540)	3
<i>Conversions</i>	4
<i>Details</i>	6
<i>Harmonies</i>	11
<i>Previews</i>	20
<i>Color Blindness Simulation</i>	23
<i>CSS Examples</i>	26

Color

CIELCh(74, 20.650, 40.540)

Conversions

Conversions Part 1

Format	Color
Hex	DBAB9E
RGB	219, 171, 158
RGB Percent	86%, 67%, 62%
CMY	0.1408, 0.3291, 0.3801
CMYK	0.00, 0.22, 0.28, 0.14
HSL	13°, 46%, 74%
HSV	13°, 28%, 86%
XYZ	49.9988, 46.7039, 38.7652
YIQ	183.8700, 32.7810, 6.1330

Conversions

Conversions Part 2

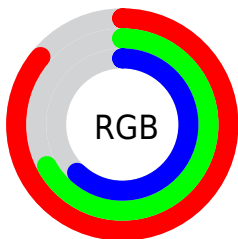
Format	Color
R _Y B	219, 175, 158
Decimal	14396318
CIE Lab	74.00, 15.69, 13.42
CIE LCh	74, 20.650, 40.540
Yxy	46.7039, 0.3691, 0.3448
Android (android.graphics.Color)	4292586398 (0xFFDBAB9E)
YUV	183.8700, -12.7539, 30.8090
Hunter-Lab	68.3403, 10.9978, 14.2066

Details

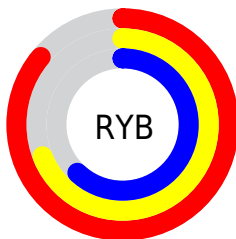
The CIELCh color **74, 20.650, 40.540** is a light color, and the websafe version is hex **CC9999**. A complement of this color would be **80, 17.092, 222.460**, and the grayscale version is **75, 0.009, 296.813**.

A 20% lighter version of the original color is **92, 12.745, 51.573**, and **54, 20.507, 40.693** is the 20% darker color. If you saturate the color by 10%, you get **69, 29.260, 40.644**, and if you desaturate by 10%, it is **79, 12.694, 40.592**.

Distribution



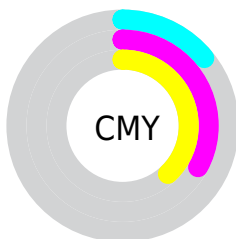
- Red (86%)
- Green (67%)
- Blue (62%)



- Red (86%)
- Yellow (69%)
- Blue (62%)



- Cyan (0%)
- Magenta (22%)
- Yellow (28%)
- Black (14%)



- Cyan (14%)
- Magenta (33%)
- Yellow (38%)

Brightness & Saturation Gradients

These gradients show how the CIELCh color 74, 20.650, 40.540 changes by changing the brightness by 10 percent. The first figure shows a shift by +10% for each color and the second figure -10%.

Similar to the brightness gradients but the following saturation gradients show a change of the CIELCh color 74, 20.650, 40.540 by changing the saturation by 10% instead.

74, 20.650, 40.540

74, 20.650, 40.540

100, 20.650,
40.540

64, 20.650, 40.540

94, 20.650, 40.540

54, 20.650, 40.540

44, 20.650, 40.540

34, 20.650, 40.540

24, 20.650, 40.540

14, 20.650, 40.540

4, 20.650, 40.540

0, 20.650, 40.540

74, 20.650, 40.540

74, 20.650, 40.540

69, 29.260, 40.644

79, 12.694, 40.592

65, 38.535, 40.923

84, 5.356, 40.710

61, 48.429, 41.415

89, 1.417, 221.492

57, 58.797, 42.120

93, 7.684, 221.491

54, 69.293, 42.955

98, 12.097,
198.698

51, 79.125, 43.631

49, 86.825, 43.592

48, 88.326, 43.639

Harmonies

Complementary

The Complementary color scheme is a pair of colors which are on the opposite of each other on the color wheel.



74, 20.650, 40.540



80, 17.092, 222.460

Rectangle

The Rectangle color scheme consists of four colors that form a rectangle on the color wheel.



74, 20.650, 40.540



74, 20.650, 90.540



74, 20.650, 220.540



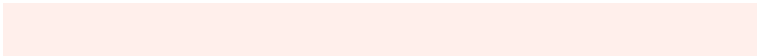
74, 20.650, 270.540

Sweetspot

The Sweet Spot groups the original color and five complimentary colors.



74, 20.649, 40.547



96, 6.183, 40.708



72, 34.319, 332.311



50, 4.421, 40.691



0, 0.000, 0.000



53, 0.007, 296.813

Same Dimension

The Same Dimension uses a secret algorithm to generate beautiful new colors.



74, 20.649, 40.547



82, 28.314, 40.580



81, 23.704, 90.183



44, 3.904, 40.693



38, 73.781, 44.043



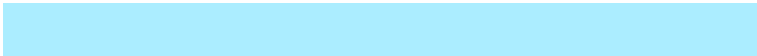
7, 20.768, 32.180

Inverse Universe

The Inverse Universe completely reimagines the original color for something new.



80, 17.092, 222.460



90, 22.456, 222.918



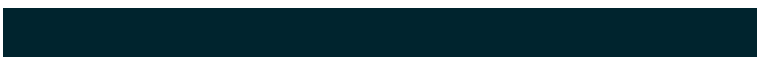
72, 23.818, 277.856



45, 3.684, 221.440



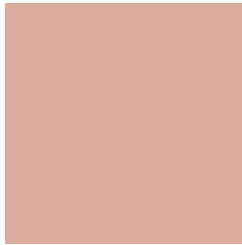
53, 33.135, 238.220



12, 13.109, 230.250

Previews

White Background



This preview shows how the CIELCh color 74, 20.650, 40.540 looks on a white background.

Color Contrast Check

Large Text (above 18pt) WCAG AA × Fail

Any Text WCAG AA × Fail

Large Text (above 18pt) WCAG AAA × Fail

Any Text WCAG AAA × Fail

Black Background



This preview shows how the CIELCh color 74, 20.650, 40.540 looks on a black background.

Color Contrast Check

Large Text (above 18pt) WCAG AA ✓ Pass

Any Text WCAG AA ✓ Pass

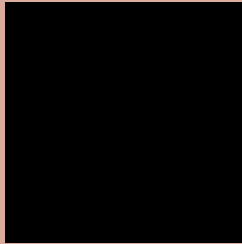
Large Text (above 18pt) WCAG AAA ✓ Pass

Any Text WCAG AAA ✓ Pass

If you want to check with other color combinations, try the [Color Contrast Checker](#).

CIELCh 74, 20.650, 40.540

Background



This preview shows how black text looks on a background with the CIELCh color 74, 20.650, 40.540.



This preview shows how white text looks on a background with the CIELCh color 74, 20.650, 40.540.

Color Blindness Simulation

Color vision deficiency is a very complex topic, and I could not describe the different causes any better than Wikipedia does, so if you want to learn more, you should check out their [article about color blindness](#).

Dichromacy



Original Color

74, 20.650, 40.540

Protanopia

74, 10.689, 92.227

Deuteranopia

74, 16.823, 55.251



Tritanopia
74, 21.793, 2.786

Trichromacy



Original Color
74, 20.650, 40.540

Protanomaly
74, 12.945, 64.714

Deuteranomaly
74, 18.263, 50.350

Tritanomaly
74, 20.366, 15.196

Monochromacy



Original Color
74, 20.650, 40.540

Achromatopsia
75, 0.009, 296.813

Achromatomaly
74, 7.216, 37.211

CSS Examples

Text

The CSS property to change the color of the text to CIELCh 74, 20.650, 40.540 is called "color". The color property can be set on classes, ids or directly on the HTML element.

This example shows how text in the color `rgb(219, 171, 158)` looks like.

```
.text, #text, p{  
    color:rgb(219, 171, 158)  
}
```

If you want to add a text shadow in that color use the text-shadow property, you can generate a text shadow directly with our [CSS Text Shadow Generator](#).

Here you see how black text with a 4 pixel rgb(219, 171, 158) colored shadow looks like.

```
.shadow{ text-shadow: 4px 4px 2px rgb(219, 171, 158) }
```

Border

The CSS property to change the border of an element to CIELCh 74, 20.650, 40.540 is called "border". The border property can be set on classes, ids or directly on the HTML element.

This example shows the color as border, it can be applied via the CSS property "border" or "border-color".

```
.border, #border, table{ border:4px solid rgb(219, 171, 158) }
```

If only the border color should be changed use the property `border-color`.

```
.border{ border-color:rgb(219, 171, 158) }
```

If you want to add a box shadow in that color use:

Here you see how a box with a 4 pixel `rgb(219, 171, 158)` colored shadow looks like.

```
.boxshadow{ -moz-box-shadow:4px 4px 4px  
4px rgb(219, 171, 158); -webkit-box-  
shadow:4px 4px 4px 4px rgb(219, 171, 158);  
box-shadow:4px 4px 4px 4px rgb(219, 171,  
158) }
```

Background

The CSS property to change the background color of an element to CIELCh 74, 20.650, 40.540 is called "background". The background property can be set on classes, ids or directly on the HTML element.

```
.background, #background, body{  
background: rgb(219, 171, 158) }
```

If only the background color should be changed can be used:

```
.background{ background-color: rgb(219,  
171, 158) }
```

This example shows the color as background, it is applied via the CSS property "background".

To optimize and compress your CSS code, you can use our [online CSS compressor and optimizer](#) based on csstidy. If you want to create a linear or radial gradient as background or border, check our [CSS Gradient Generator](#).

Hey! You found this booklet interesting? Support Converting Colors with the new Membership Option!

The pro membership hides all ads, plus gives you double the colors in the color bucket, and more awesome pro features!

[Learn more, Memberships starting at \\$2.50/m!](#)

**Follow me
on Twitter!**

@ConvertingColor