

Converting Colors

CIELCh(74, 23.809, 66.094)

Have a look what the booklet for
CIELCh(74, 23.809, 66.094) contains.

CIELCh(74, 23.792, 66.086)	3
<i>Conversions</i>	4
<i>Details</i>	6
<i>Harmonies</i>	11
<i>Previews</i>	20
<i>Color Blindness Simulation</i>	23
<i>CSS Examples</i>	26

Color

CIELCh(74, 23.792, 66.086)

Conversions

Conversions Part 1

Format	Color
Hex	D6AF8F
RGB	214, 175, 143
RGB Percent	84%, 69%, 56%
CMY	0.1625, 0.3153, 0.4408
CMYK	0.00, 0.18, 0.33, 0.16
HSL	27°, 46%, 70%
HSV	27°, 33%, 84%
XYZ	47.7845, 46.7039, 32.3266
YIQ	183.0130, 33.5160, -1.6840

Conversions

Conversions Part 2

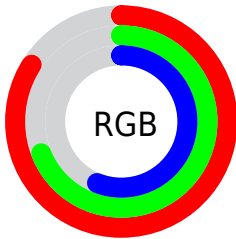
Format	Color
R _Y B	214, 201, 143
Decimal	14069647
CIE Lab	74.00, 9.64, 21.75
CIE LCh	74, 23.792, 66.086
Yxy	46.7039, 0.3768, 0.3683
Android (android.graphics.Color)	4292259727 (0xFFD6AF8F)
YUV	183.0130, -19.7264, 27.1756
Hunter-Lab	68.3403, 5.2143, 19.7926

Details

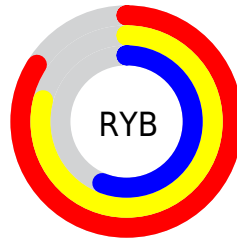
The CIELCh color **74, 23.792, 66.086** is a light color, and the websafe version is hex **CC9966**. A complement of this color would be **72, 21.050, 255.071**, and the grayscale version is **74, 0.009, 296.813**.

A 20% lighter version of the original color is **93, 19.778, 81.158**, and **54, 24.024, 67.199** is the 20% darker color. If you saturate the color by 10%, you get **71, 31.836, 64.967**, and if you desaturate by 10%, it is **77, 16.169, 67.227**.

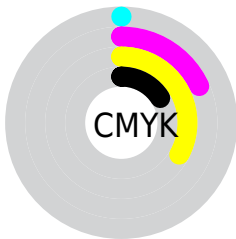
Distribution



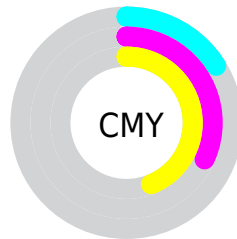
- Red (84%)
- Green (69%)
- Blue (56%)



- Red (84%)
- Yellow (79%)
- Blue (56%)



- Cyan (0%)
- Magenta (18%)
- Yellow (33%)
- Black (16%)



- Cyan (16%)
- Magenta (32%)
- Yellow (44%)


Brightness & Saturation Gradients

These gradients show how the CIELCh color 74, 23.792, 66.086 changes by changing the brightness by 10 percent. The first figure shows a shift by +10% for each color and the second figure -10%.

Similar to the brightness gradients but the following saturation gradients show a change of the CIELCh color 74, 23.792, 66.086 by changing the saturation by 10% instead.

 74, 23.792, 66.086

 74, 23.792, 66.086

 100, 23.792,
66.086

 64, 23.792, 66.086

 94, 23.792, 66.086

 54, 23.792, 66.086

 44, 23.792, 66.086

 34, 23.792, 66.086

 24, 23.792, 66.086

 14, 23.792, 66.086

 4, 23.792, 66.086

 0, 23.792, 66.086

 74, 23.792, 66.086

 74, 23.792, 66.086

71, 31.836, 64.967

77, 16.169, 67.227

68, 40.276, 63.849

81, 8.955, 68.354

64, 49.008, 62.717

84, 2.122, 69.345

62, 57.780, 61.503

88, 4.366, 250.773

59, 66.046, 60.042

91, 10.546,
251.823

56, 72.833, 58.008

95, 11.574,
225.409

55, 76.451, 56.331

97, 13.869,
198.581

Harmonies

Complementary

The Complementary color scheme is a pair of colors which are on the opposite of each other on the color wheel.



74, 23.792, 66.086



72, 21.050, 255.071

Rectangle

The Rectangle color scheme consists of four colors that form a rectangle on the color wheel.



74, 23.792, 66.086



74, 23.792, 116.086



74, 23.792, 246.086



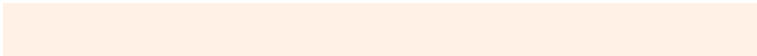
74, 23.792, 296.086

Sweetspot

The Sweet Spot groups the original color and five complimentary colors.



74, 23.792, 66.093



96, 7.751, 68.697



67, 33.889, 344.019



51, 5.309, 68.543



0, 0.000, 0.000



53, 0.007, 296.813

Same Dimension

The Same Dimension uses a secret algorithm to generate beautiful new colors.



74, 23.792, 66.093



84, 33.751, 65.283



83, 35.065, 104.739



43, 3.812, 68.770



44, 64.470, 56.959



9, 17.121, 53.428

Inverse Universe

The Inverse Universe completely reimagines the original color for something new.



72, 21.050, 255.071



82, 28.970, 256.655



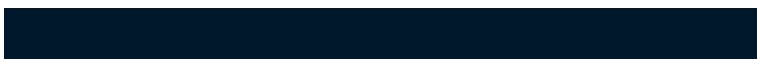
63, 37.757, 292.450



43, 3.701, 251.137



39, 48.159, 278.500



7, 15.989, 267.585

Previews

White Background



This preview shows how the CIELCh color 74, 23.792, 66.086 looks on a white background.

Color Contrast Check

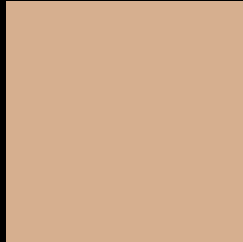
Large Text (above 18pt) WCAG AA × Fail

Any Text WCAG AA × Fail

Large Text (above 18pt) WCAG AAA × Fail

Any Text WCAG AAA × Fail

Black Background



This preview shows how the CIELCh color 74, 23.792, 66.086 looks on a black background.

Color Contrast Check

Large Text (above 18pt) WCAG AA ✓ Pass

Any Text WCAG AA ✓ Pass

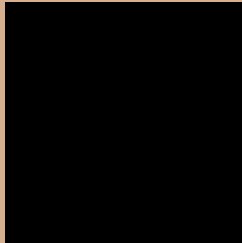
Large Text (above 18pt) WCAG AAA ✓ Pass

Any Text WCAG AAA ✓ Pass

If you want to check with other color combinations, try the [Color Contrast Checker](#).

CIELCh 74, 23.792, 66.086

Background



This preview shows how black text looks on a background with the CIELCh color 74, 23.792, 66.086.



This preview shows how white text looks on a background with the CIELCh color 74, 23.792, 66.086.

Color Blindness Simulation

Color vision deficiency is a very complex topic, and I could not describe the different causes any better than Wikipedia does, so if you want to learn more, you should check out their [article about color blindness](#).

Dichromacy



Original Color


74, 23.792, 66.086

Protanopia

74, 19.854, 95.390

Deuteranopia

74, 23.501, 66.814



Tritanopia
74, 19.938, 0.756

Trichromacy



Original Color
74, 23.792, 66.086

Protanomaly
74, 20.263, 83.482

Deuteranomaly
74, 23.501, 66.814

Tritanomaly
74, 17.792, 26.064

Monochromacy



Original Color
74, 23.792, 66.086

Achromatopsia
74, 0.009, 296.813

Achromatomaly
74, 8.437, 69.548

CSS Examples

Text

The CSS property to change the color of the text to CIELCh 74, 23.792, 66.086 is called "color". The color property can be set on classes, ids or directly on the HTML element.

This example shows how text in the color `rgb(214, 175, 143)` looks like.

```
.text, #text, p{  
    color:rgb(214, 175, 143)  
}
```

If you want to add a text shadow in that color use the text-shadow property, you can generate a text shadow directly with our [CSS Text Shadow Generator](#).

Here you see how black text with a 4 pixel rgb(214, 175, 143) colored shadow looks like.

```
.shadow{ text-shadow: 4px 4px 2px rgb(214, 175, 143) }
```

Border

The CSS property to change the border of an element to CIELCh 74, 23.792, 66.086 is called "border". The border property can be set on classes, ids or directly on the HTML element.

This example shows the color as border, it can be applied via the CSS property "border" or "border-color".

```
.border, #border, table{ border:4px solid rgb(214, 175, 143) }
```

If only the border color should be changed use the property `border-color`.

```
.border{ border-color:rgb(214, 175, 143) }
```

If you want to add a box shadow in that color use:

Here you see how a box with a 4 pixel `rgb(214, 175, 143)` colored shadow looks like.

```
.boxshadow{ -moz-box-shadow:4px 4px 4px  
4px rgb(214, 175, 143); -webkit-box-  
shadow:4px 4px 4px 4px rgb(214, 175, 143);  
box-shadow:4px 4px 4px 4px rgb(214, 175,  
143) }
```

Background

The CSS property to change the background color of an element to CIELCh 74, 23.792, 66.086 is called "background". The background property can be set on classes, ids or directly on the HTML element.

```
.background, #background, body{  
background: rgb(214, 175, 143) }
```

If only the background color should be changed can be used:

```
.background{ background-color: rgb(214,  
175, 143) }
```

This example shows the color as background, it is applied via the CSS property "background".

To optimize and compress your CSS code, you can use our [online CSS compressor and optimizer](#) based on csstidy. If you want to create a linear or radial gradient as background or border, check our [CSS Gradient Generator](#).

Hey! You found this booklet interesting? Support Converting Colors with the new Membership Option!

The pro membership hides all ads, plus gives you double the colors in the color bucket, and more awesome pro features!

[Learn more, Memberships starting at \\$2.50/m!](#)

**Follow me
on Twitter!**

@ConvertingColor