

Converting Colors

CIELCh(74, 25.276, 10.928)

Have a look what the booklet for
CIELCh(74, 25.276, 10.928) contains.

CIELCh(74, 25.339, 10.839)	3
<i>Conversions</i>	4
<i>Details</i>	6
<i>Harmonies</i>	11
<i>Previews</i>	20
<i>Color Blindness Simulation</i>	23
<i>CSS Examples</i>	26

Color

CIELCh(74, 25.339, 10.839)

Conversions

Conversions Part 1

Format	Color
Hex	E5A5AE
RGB	229, 165, 174
RGB Percent	90%, 65%, 68%
CMY	0.1014, 0.3524, 0.3171
CMYK	0.00, 0.28, 0.24, 0.10
HSL	352°, 55%, 77%
HSV	352°, 28%, 90%
XYZ	53.4939, 46.7039, 46.3103
YIQ	185.1620, 35.2550, 16.3670

Conversions

Conversions Part 2

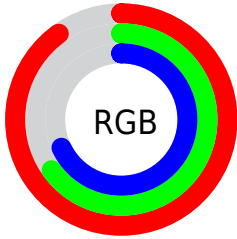
Format	Color
R _Y B	229, 165, 174
Decimal	15050158
CIE Lab	74.00, 24.89, 4.76
CIE LCh	74, 25.339, 10.839
Yxy	46.7039, 0.3651, 0.3188
Android (android.graphics.Color)	4293240238 (0xFFE5A5AE)
YUV	185.1620, -5.5029, 38.4459
Hunter-Lab	68.3403, 20.1268, 7.6607

Details

The CIELCh color **74, 25.339, 10.839** is a light color, and the websafe version is hex **CC9999**. A complement of this color would be **87, 22.069, 185.517**, and the grayscale version is **75, 0.009, 296.813**.

A 20% lighter version of the original color is **91, 13.536, 0.321**, and **54, 25.024, 10.772** is the 20% darker color. If you saturate the color by 10%, you get **68, 35.256, 12.392**, and if you desaturate by 10%, it is **80, 15.816, 9.580**.

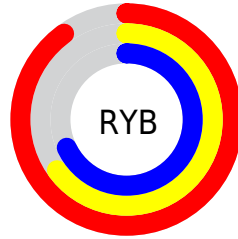
Distribution



Red (90%)

Green (65%)

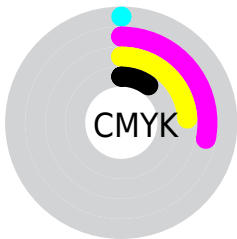
Blue (68%)



Red (90%)

Yellow (65%)

Blue (68%)

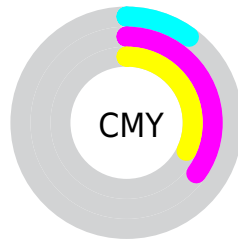


Cyan (0%)

Magenta (28%)

Yellow (24%)

Black (10%)



Cyan (10%)

Magenta (35%)

Yellow (32%)

Brightness & Saturation Gradients

These gradients show how the CIELCh color 74, 25.339, 10.839 changes by changing the brightness by 10 percent. The first figure shows a shift by +10% for each color and the second figure -10%.

Similar to the brightness gradients but the following saturation gradients show a change of the CIELCh color 74, 25.339, 10.839 by changing the saturation by 10% instead.

74, 25.339, 10.839

74, 25.339, 10.839

100, 25.339,
10.839

64, 25.339, 10.839

94, 25.339, 10.839

54, 25.339, 10.839

44, 25.339, 10.839

34, 25.339, 10.839

24, 25.339, 10.839

14, 25.339, 10.839

4, 25.339, 10.839

0, 25.339, 10.839

74, 25.339, 10.839

74, 25.339, 10.839

68, 35.256, 12.392

80, 15.816, 9.580

63, 45.390, 14.331

86, 6.789, 8.502

58, 55.456, 16.790

92, 1.712, 188.064

54, 65.097, 19.912

98, 8.920, 192.054

51, 73.963, 23.808

98, 8.804, 198.924

49, 81.825, 28.434

48, 88.547, 33.357

48, 89.851, 34.266

Harmonies

Complementary

The Complementary color scheme is a pair of colors which are on the opposite of each other on the color wheel.



74, 25.339, 10.839



87, 22.069, 185.517

Rectangle

The Rectangle color scheme consists of four colors that form a rectangle on the color wheel.



74, 25.339, 10.839



74, 25.339, 60.839



74, 25.339, 190.839



74, 25.339, 240.839

Sweetspot

The Sweet Spot groups the original color and five complimentary colors.



74, 25.337, 10.843



95, 7.471, 8.514



75, 39.361, 321.573



50, 5.334, 8.672



0, 0.000, 0.000



53, 0.007, 296.813

Same Dimension

The Same Dimension uses a secret algorithm to generate beautiful new colors.



74, 25.337, 10.843



78, 34.170, 11.774



79, 20.585, 55.449



45, 4.890, 8.661



37, 73.861, 33.413



6, 26.742, 15.918

Inverse Universe

The Inverse Universe completely reimagines the original color for something new.



74, 25.337, 10.843



78, 34.170, 11.774



81, 17.744, 241.095



45, 4.890, 8.661



37, 73.861, 33.413



6, 26.742, 15.918

Previews

White Background



This preview shows how the CIELCh color 74, 25.339, 10.839 looks on a white background.

Color Contrast Check

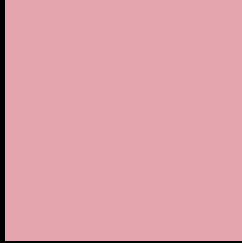
Large Text (above 18pt) WCAG AA × Fail

Any Text WCAG AA × Fail

Large Text (above 18pt) WCAG AAA × Fail

Any Text WCAG AAA × Fail

Black Background



This preview shows how the CIE LCh color 74, 25.339, 10.839 looks on a black background.

Color Contrast Check

Large Text (above 18pt) WCAG AA ✓ Pass

Any Text WCAG AA ✓ Pass

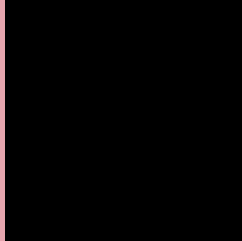
Large Text (above 18pt) WCAG AAA ✓ Pass

Any Text WCAG AAA ✓ Pass

If you want to check with other color combinations, try the [Color Contrast Checker](#).

CIELCh 74, 25.339, 10.839

Background



This preview shows how black text looks on a background with the CIELCh color 74, 25.339, 10.839.



This preview shows how white text looks on a background with the CIELCh color 74, 25.339, 10.839.

Color Blindness Simulation

Color vision deficiency is a very complex topic, and I could not describe the different causes any better than Wikipedia does, so if you want to learn more, you should check out their [article about color blindness](#).

Dichromacy



Original Color

74, 25.339, 10.839

Protanopia

74, 1.856, 343.619

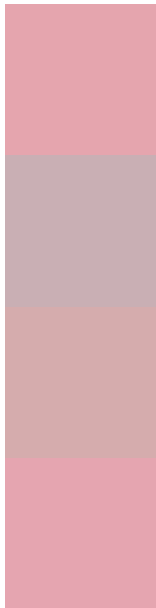
Deuteranopia

74, 11.065, 31.429



Tritanopia
74, 25.525, 7.261

Trichromacy



Original Color
74, 25.339, 10.839

Protanomaly
74, 10.245, 5.024

Deuteranomaly
74, 15.937, 18.843

Tritanomaly
74, 25.451, 8.448

Monochromacy



Original Color
74, 25.339, 10.839

Achromatopsia
75, 0.009, 296.813

Achromatomaly
75, 8.877, 9.652

CSS Examples

Text

The CSS property to change the color of the text to CIELCh 74, 25.339, 10.839 is called "color". The color property can be set on classes, ids or directly on the HTML element.

This example shows how text in the color `rgb(229, 165, 174)` looks like.

```
.text, #text, p{  
    color:rgb(229, 165, 174)  
}
```

If you want to add a text shadow in that color use the text-shadow property, you can generate a text shadow directly with our [CSS Text Shadow Generator](#).

Here you see how black text with a 4 pixel rgb(229, 165, 174) colored shadow looks like.

```
.shadow{ text-shadow: 4px 4px 2px rgb(229, 165, 174) }
```

Border

The CSS property to change the border of an element to CIELCh 74, 25.339, 10.839 is called "border". The border property can be set on classes, ids or directly on the HTML element.

This example shows the color as border, it can be applied via the CSS property "border" or "border-color".

```
.border, #border, table{ border:4px solid rgb(229, 165, 174) }
```

If only the border color should be changed use the property `border-color`.

```
.border{ border-color:rgb(229, 165, 174) }
```

If you want to add a box shadow in that color use:

Here you see how a box with a 4 pixel `rgb(229, 165, 174)` colored shadow looks like.

```
.boxshadow{ -moz-box-shadow:4px 4px 4px  
4px rgb(229, 165, 174); -webkit-box-  
shadow:4px 4px 4px 4px rgb(229, 165, 174);  
box-shadow:4px 4px 4px 4px rgb(229, 165,  
174) }
```

Background

The CSS property to change the background color of an element to CIELCh 74, 25.339, 10.839 is called "background". The background property can be set on classes, ids or directly on the HTML element.

```
.background, #background, body{  
background: rgb(229, 165, 174) }
```

If only the background color should be changed can be used:

```
.background{ background-color: rgb(229,  
165, 174) }
```

This example shows the color as background, it is applied via the CSS property "background".

To optimize and compress your CSS code, you can use our [online CSS compressor and optimizer](#) based on csstidy. If you want to create a linear or radial gradient as background or border, check our [CSS Gradient Generator](#).

Hey! You found this booklet interesting? Support Converting Colors with the new Membership Option!

The pro membership hides all ads, plus gives you double the colors in the color bucket, and more awesome pro features!

[Learn more, Memberships starting at \\$2.50/m!](#)

**Follow me
on Twitter!**

@ConvertingColor