

Converting Colors

CIELCh(74, 28.453, 0.116)

Have a look what the booklet for
CIELCh(74, 28.453, 0.116) contains.

CIELCh(74, 28.351, 359.982)	3
<i>Conversions</i>	4
<i>Details</i>	6
<i>Harmonies</i>	12
<i>Previews</i>	21
<i>Color Blindness Simulation</i>	24
<i>CSS Examples</i>	27

Color

CIELCh(74, 28.351, 359.982)

Conversions

Conversions Part 1

Format	Color
Hex	E8A3B7
RGB	232, 163, 183
RGB Percent	91%, 64%, 72%
CMY	0.0907, 0.3612, 0.2828
CMYK	0.00, 0.30, 0.21, 0.09
HSL	343°, 60%, 77%
HSV	343°, 30%, 91%
XYZ	54.8519, 46.7039, 50.8614
YIQ	185.9110, 34.7040, 20.8480

Conversions

Conversions Part 2

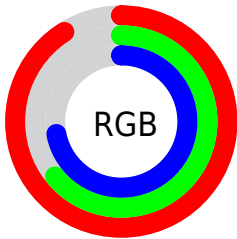
Format	Color
R _Y B	232, 163, 183
Decimal	15246263
CIE Lab	74.00, 28.35, -0.01
CIE LCh	74, 28.351, 359.982
Yxy	46.7039, 0.3599, 0.3064
Android (android.graphics.Color)	4293436343 (0xFFE8A3B7)
YUV	185.9110, -1.4351, 40.4201
Hunter-Lab	68.3403, 23.6737, 3.7123

Details

The CIELCh color $74, 28.351, 359.982$ is a light color, and the websafe version is hex `CC9999`. A complement of this color would be $87, 25.860, 173.728$, and the grayscale version is $75, 0.009, 296.813$.

A 20% lighter version of the original color is $91, 17.140, 341.327$, and $54, 27.999, 0.402$ is the 20% darker color. If you saturate the color by 10%, you get $68, 38.308, 1.541$, and if you desaturate by 10%, it is $80, 18.508, 358.680$.

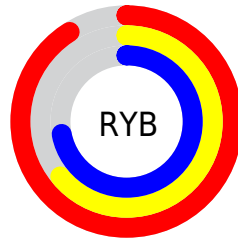
Distribution



Red (91%)

Green (64%)

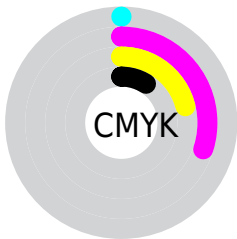
Blue (72%)



Red (91%)

Yellow (64%)

Blue (72%)

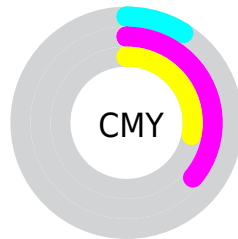


Cyan (0%)

Magenta (30%)

Yellow (21%)

Black (9%)



Cyan (9%)

Magenta (36%)

Yellow (28%)


Brightness & Saturation Gradients

These gradients show how the CIELCh color 74, 28.351, 359.982 changes by changing the brightness by 10 percent. The first figure shows a shift by +10% for each color and the second figure -10%.

Similar to the brightness gradients but the following saturation gradients show a change of the CIELCh color 74, 28.351, 359.982 by changing the saturation by 10% instead.

 74, 28.351,
359.982

 74, 28.351,
359.982


 100, 28.351,
359.982

 64, 28.351,
359.982


 94, 28.351,
359.982

 54, 28.351,
359.982

 44, 28.351,
359.982

 34, 28.351,
359.982

 24, 28.351,
359.982

 14, 28.351,
359.982

 4, 28.351, 359.982

0, 28.351, 359.982

74, 28.351,
359.982

74, 28.351,
359.982

68, 38.308, 1.541

80, 18.508,
358.680

63, 48.113, 3.441

86, 8.956, 357.545

59, 57.383, 5.811

92, 0.218, 179.114

55, 65.669, 8.810

98, 8.642, 177.296

52, 72.584, 12.612

98, 7.896, 198.990

50, 77.994, 17.337

49, 82.340, 22.805

49, 82.452, 22.938

Harmonies

Complementary

The Complementary color scheme is a pair of colors which are on the opposite of each other on the color wheel.



74, 28.351, 359.982



87, 25.860, 173.728

Rectangle

The Rectangle color scheme consists of four colors that form a rectangle on the color wheel.



74, 28.351, 359.982



74, 28.351, 49.982



74, 28.351, 179.982



74, 28.351, 229.982

Sweetspot

The Sweet Spot groups the original color and five complimentary colors.



74, 28.348, 359.985



94, 8.915, 357.469



73, 40.933, 317.013



49, 6.214, 357.628



0, 0.000, 0.000



53, 0.007, 296.813

Same Dimension

The Same Dimension uses a secret algorithm to generate beautiful new colors.



74, 28.348, 359.985



77, 37.350, 0.952



77, 23.473, 39.219



45, 5.170, 357.512



37, 67.372, 21.867



7, 26.650, 9.061

Inverse Universe

The Inverse Universe completely reimagines the original color for something new.



74, 28.348, 359.985



77, 37.350, 0.952



84, 19.088, 220.862



45, 5.170, 357.512



37, 67.372, 21.867



7, 26.650, 9.061

Previews

White Background



This preview shows how the CIELCh color 74, 28.351, 359.982 looks on a white background.

Color Contrast Check

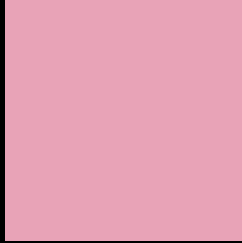
Large Text (above 18pt) WCAG AA × Fail

Any Text WCAG AA × Fail

Large Text (above 18pt) WCAG AAA × Fail

Any Text WCAG AAA × Fail

Black Background



This preview shows how the CIELCh color 74, 28.351, 359.982 looks on a black background.

Color Contrast Check

Large Text (above 18pt) WCAG AA ✓ Pass

Any Text WCAG AA ✓ Pass

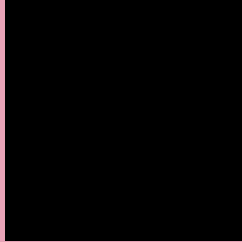
Large Text (above 18pt) WCAG AAA ✓ Pass

Any Text WCAG AAA ✓ Pass

If you want to check with other color combinations, try the [Color Contrast Checker](#).

CIELCh 74, 28.351, 359.982

Background



This preview shows how black text looks on a background with the CIELCh color 74, 28.351, 359.982.



This preview shows how white text looks on a background with the CIELCh color 74, 28.351, 359.982.

Color Blindness Simulation

Color vision deficiency is a very complex topic, and I could not describe the different causes any better than Wikipedia does, so if you want to learn more, you should check out their [article about color blindness](#).

Dichromacy



Original Color
74, 28.351, 359.982

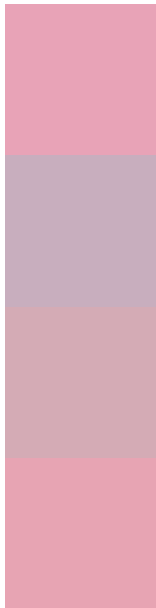
Protanopia
74, 7.059, 293.792

Deuteranopia
74, 9.370, 6.886



Tritanopia
74, 26.701, 8.050

Trichromacy



Original Color
74, 28.351, 359.982

Protanomaly
74, 13.013, 338.870

Deuteranomaly
74, 16.532, 1.920

Tritanomaly
74, 26.961, 4.684

Monochromacy



Original Color
74, 28.351, 359.982

Achromatopsia
76, 0.009, 296.813

Achromatomaly
75, 10.159, 358.508

CSS Examples

Text

The CSS property to change the color of the text to CIELCh 74, 28.351, 359.982 is called "color". The color property can be set on classes, ids or directly on the HTML element.

This example shows how text in the color `rgb(232, 163, 183)` looks like.

```
.text, #text, p{  
    color:rgb(232, 163, 183)  
}
```

If you want to add a text shadow in that color use the text-shadow property, you can generate a text shadow directly with our [CSS Text Shadow Generator](#).

Here you see how black text with a 4 pixel rgb(232, 163, 183) colored shadow looks like.

```
.shadow{ text-shadow: 4px 4px 2px rgb(232, 163, 183) }
```

Border

The CSS property to change the border of an element to CIELCh 74, 28.351, 359.982 is called "border". The border property can be set on classes, ids or directly on the HTML element.

This example shows the color as border, it can be applied via the CSS property "border" or "border-color".

```
.border, #border, table{ border:4px solid rgb(232, 163, 183) }
```

If only the border color should be changed use the property `border-color`.

```
.border{ border-color:rgb(232, 163, 183) }
```

If you want to add a box shadow in that color use:

Here you see how a box with a 4 pixel `rgb(232, 163, 183)` colored shadow looks like.

```
.boxshadow{ -moz-box-shadow:4px 4px 4px  
4px rgb(232, 163, 183); -webkit-box-  
shadow:4px 4px 4px 4px rgb(232, 163, 183);  
box-shadow:4px 4px 4px 4px rgb(232, 163,  
183) }
```

Background

The CSS property to change the background color of an element to CIELCh 74, 28.351, 359.982 is called "background". The background property can be set on classes, ids or directly on the HTML element.

```
.background, #background, body{  
background: rgb(232, 163, 183) }
```

If only the background color should be changed can be used:

```
.background{ background-color: rgb(232,  
163, 183) }
```

This example shows the color as background, it is applied via the CSS property "background".

To optimize and compress your CSS code, you can use our [online CSS compressor and optimizer](#) based on csstidy. If you want to create a linear or radial gradient as background or border, check our [CSS Gradient Generator](#).

Hey! You found this booklet interesting? Support Converting Colors with the new Membership Option!

The pro membership hides all ads, plus gives you double the colors in the color bucket, and more awesome pro features!

[Learn more, Memberships starting at \\$2.50/m!](#)

**Follow me
on Twitter!**

@ConvertingColor