

Converting Colors

CIELCh(74, 29.243, 72.003)

Have a look what the booklet for
CIELCh(74, 29.243, 72.003) contains.

CIELCh(74, 29.593, 72.292)	3
<i>Conversions</i>	4
<i>Details</i>	6
<i>Harmonies</i>	11
<i>Previews</i>	20
<i>Color Blindness Simulation</i>	23
<i>CSS Examples</i>	26

Color

CIELCh(74, 29.593, 72.292)

Conversions

Conversions Part 1

Format	Color
Hex	D8AF83
RGB	216, 175, 131
RGB Percent	85%, 69%, 51%
CMY	0.1543, 0.3150, 0.4875
CMYK	0.00, 0.19, 0.39, 0.15
HSL	31°, 52%, 68%
HSV	31°, 39%, 85%
XYZ	47.5529, 46.7039, 27.8671
YIQ	182.2430, 38.5600, -4.9920

Conversions

Conversions Part 2

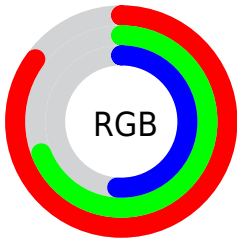
Format	Color
R _Y B	210, 216, 131
Decimal	14200707
CIE Lab	74.00, 9.00, 28.19
CIE LCh	74, 29.593, 72.292
Yxy	46.7039, 0.3894, 0.3824
Android (android.graphics.Color)	4292390787 (0xFFD8AF83)
YUV	182.2430, -25.2628, 29.6049
Hunter-Lab	68.3403, 4.6095, 23.6615

Details

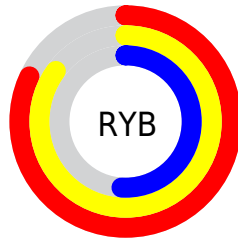
The CIELCh color **74, 29.593, 72.292** is a light color, and the websafe version is hex **CC9966**. A complement of this color would be **69, 26.785, 264.130**, and the grayscale version is **74, 0.009, 296.813**.

A 20% lighter version of the original color is **93, 25.931, 87.128**, and **54, 29.791, 72.481** is the 20% darker color. If you saturate the color by 10%, you get **71, 37.889, 70.981**, and if you desaturate by 10%, it is **77, 21.601, 73.594**.

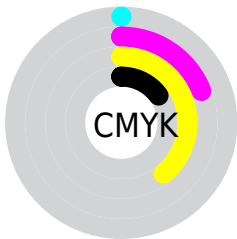
Distribution



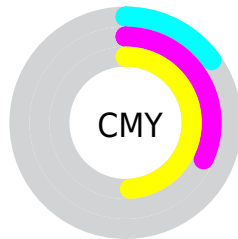
- Red (85%)
- Green (69%)
- Blue (51%)



- Red (82%)
- Yellow (85%)
- Blue (51%)



- Cyan (0%)
- Magenta (19%)
- Yellow (39%)
- Black (15%)



- Cyan (15%)
- Magenta (32%)
- Yellow (49%)

Brightness & Saturation Gradients

These gradients show how the CIELCh color 74, 29.593, 72.292 changes by changing the brightness by 10 percent. The first figure shows a shift by +10% for each color and the second figure -10%.

Similar to the brightness gradients but the following saturation gradients show a change of the CIELCh color 74, 29.593, 72.292 by changing the saturation by 10% instead.

■ 74, 29.593, 72.292

■ 74, 29.593, 72.292

■ 100, 29.593,
72.292

■ 64, 29.593, 72.292

■ 94, 29.593, 72.292

■ 54, 29.593, 72.292

■ 44, 29.593, 72.292

■ 34, 29.593, 72.292

■ 24, 29.593, 72.292

■ 14, 29.593, 72.292

■ 4, 29.593, 72.292

■ 0, 29.593, 72.292

■ 74, 29.593, 72.292

■ 74, 29.593, 72.292

71, 37.889, 70.981

77, 21.601, 73.594

68, 46.395, 69.628

80, 13.940, 74.869

66, 54.890, 68.192

83, 6.606, 76.102

63, 62.922, 66.559

86, 0.422, 258.281

61, 69.679, 64.500

90, 7.170, 258.645

58, 74.448, 61.813

93, 11.565,
252.557

58, 74.729, 61.660

95, 11.255,
218.999

97, 13.207,
198.624

Harmonies

Complementary

The Complementary color scheme is a pair of colors which are on the opposite of each other on the color wheel.



74, 29.593, 72.292



69, 26.785, 264.130

Rectangle

The Rectangle color scheme consists of four colors that form a rectangle on the color wheel.



74, 29.593, 72.292



74, 29.593, 122.292



74, 29.593, 252.292



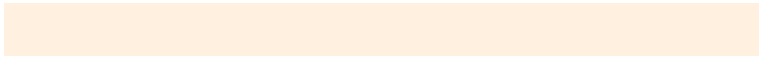
74, 29.593, 302.292

Sweetspot

The Sweet Spot groups the original color and five complimentary colors.



74, 29.593, 72.298



96, 9.721, 75.775



65, 38.898, 348.555



50, 6.467, 75.613



0, 0.000, 0.000



53, 0.007, 296.813

Same Dimension

The Same Dimension uses a secret algorithm to generate beautiful new colors.



74, 29.593, 72.298



83, 41.138, 71.240



84, 43.637, 107.149



43, 3.967, 76.100



47, 62.642, 62.308



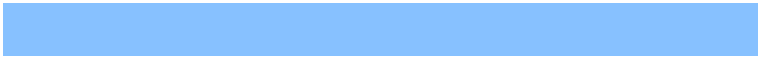
10, 17.053, 61.391

Inverse Universe

The Inverse Universe completely reimagines the original color for something new.



69, 26.785, 264.130



76, 36.426, 266.171



58, 48.308, 295.938



43, 3.892, 258.615



36, 55.099, 285.491



6, 17.638, 274.560

Previews

White Background



This preview shows how the CIELCh color 74, 29.593, 72.292 looks on a white background.

Color Contrast Check

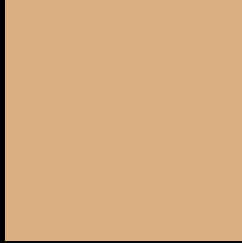
Large Text (above 18pt) WCAG AA × Fail

Any Text WCAG AA × Fail

Large Text (above 18pt) WCAG AAA × Fail

Any Text WCAG AAA × Fail

Black Background



This preview shows how the CIELCh color 74, 29.593, 72.292 looks on a black background.

Color Contrast Check

Large Text (above 18pt) WCAG AA ✓ Pass

Any Text WCAG AA ✓ Pass

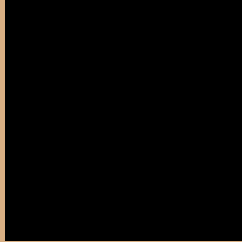
Large Text (above 18pt) WCAG AAA ✓ Pass

Any Text WCAG AAA ✓ Pass

If you want to check with other color combinations, try the [Color Contrast Checker](#).

CIELCh 74, 29.593, 72.292

Background



This preview shows how black text looks on a background with the CIELCh color 74, 29.593, 72.292.



This preview shows how white text looks on a background with the CIELCh color 74, 29.593, 72.292.

Color Blindness Simulation

Color vision deficiency is a very complex topic, and I could not describe the different causes any better than Wikipedia does, so if you want to learn more, you should check out their [article about color blindness](#).

Dichromacy

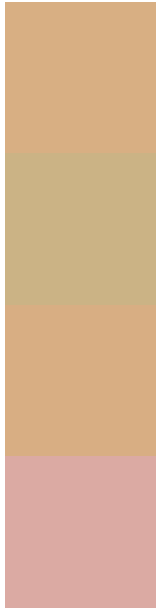




Tritanopia

74, 21.424, 2.407

Trichromacy



Original Color
74, 29.593, 72.292

Protanomaly
74, 26.747, 85.883

Deuteranomaly
74, 29.446, 71.104

Tritanomaly
74, 19.920, 31.829

Monochromacy



Original Color
74, 29.593, 72.292

Achromatopsia
74, 0.009, 296.813

Achromatomaly
74, 10.444, 75.141

CSS Examples

Text

The CSS property to change the color of the text to CIELCh 74, 29.593, 72.292 is called "color". The color property can be set on classes, ids or directly on the HTML element.

This example shows how text in the color `rgb(216, 175, 131)` looks like.

```
.text, #text, p{  
    color:rgb(216, 175, 131)  
}
```

If you want to add a text shadow in that color use the text-shadow property, you can generate a text shadow directly with our [CSS Text Shadow Generator](#).

Here you see how black text with a 4 pixel rgb(216, 175, 131) colored shadow looks like.

```
.shadow{ text-shadow: 4px 4px 2px rgb(216, 175, 131) }
```

Border

The CSS property to change the border of an element to CIELCh 74, 29.593, 72.292 is called "border". The border property can be set on classes, ids or directly on the HTML element.

This example shows the color as border, it can be applied via the CSS property "border" or "border-color".

```
.border, #border, table{ border:4px solid rgb(216, 175, 131) }
```

If only the border color should be changed use the property `border-color`.

```
.border{ border-color:rgb(216, 175, 131) }
```

If you want to add a box shadow in that color use:

Here you see how a box with a 4 pixel `rgb(216, 175, 131)` colored shadow looks like.

```
.boxshadow{ -moz-box-shadow:4px 4px 4px  
4px rgb(216, 175, 131); -webkit-box-  
shadow:4px 4px 4px 4px rgb(216, 175, 131);  
box-shadow:4px 4px 4px 4px rgb(216, 175,  
131) }
```

Background

The CSS property to change the background color of an element to CIELCh 74, 29.593, 72.292 is called "background". The background property can be set on classes, ids or directly on the HTML element.

```
.background, #background, body{  
background: rgb(216, 175, 131) }
```

If only the background color should be changed can be used:

```
.background{ background-color: rgb(216,  
175, 131) }
```

This example shows the color as background, it is applied via the CSS property "background".

To optimize and compress your CSS code, you can use our [online CSS compressor and optimizer](#) based on csstidy. If you want to create a linear or radial gradient as background or border, check our [CSS Gradient Generator](#).

Hey! You found this booklet interesting? Support Converting Colors with the new Membership Option!

The pro membership hides all ads, plus gives you double the colors in the color bucket, and more awesome pro features!

[Learn more, Memberships starting at \\$2.50/m!](#)

**Follow me
on Twitter!**

@ConvertingColor