

Converting Colors

CIELCh(74, 33.866, 7.315)

Have a look what the booklet for
CIELCh(74, 33.866, 7.315) contains.

CIELCh(74, 34.098, 7.401)	3
<i>Conversions</i>	4
<i>Details</i>	6
<i>Harmonies</i>	11
<i>Previews</i>	20
<i>Color Blindness Simulation</i>	23
<i>CSS Examples</i>	26

Color

CIELCh(74, 34.098, 7.401)

Conversions

Conversions Part 1

Format	Color
Hex	F39EAF
RGB	243, 158, 175
RGB Percent	95%, 62%, 69%
CMY	0.0463, 0.3797, 0.3130
CMYK	0.00, 0.35, 0.28, 0.05
HSL	348°, 78%, 79%
HSV	348°, 35%, 95%
XYZ	57.0398, 46.7039, 46.6555
YIQ	185.3530, 45.2030, 23.3070

Conversions

Conversions Part 2

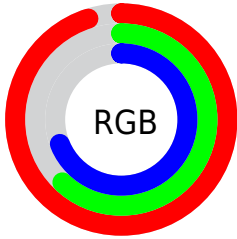
Format	Color
R_{YB}	243, 158, 175
Decimal	15965871
CIE _{Lab}	74.00, 33.81, 4.39
CIE _{LCh}	74, 34.098, 7.401
Yxy	46.7039, 0.3793, 0.3105
Android (android.graphics.Color)	4294155951 (0xFFFF39EAF)
YUV	185.3530, -5.1040, 50.5564
Hunter-Lab	68.3403, 29.3885, 7.3613

Details

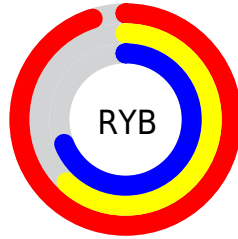
The CIELCh color **74, 34.098, 7.401** is a light color, and the websafe version is hex **FF9999**. A complement of this color would be **90, 29.379, 179.928**, and the grayscale version is **75, 0.009, 296.813**.

A 20% lighter version of the original color is **89, 17.578, 350.666**, and **54, 34.289, 6.850** is the 20% darker color. If you saturate the color by 10%, you get **68, 44.516, 9.223**, and if you desaturate by 10%, it is **80, 23.839, 5.926**.

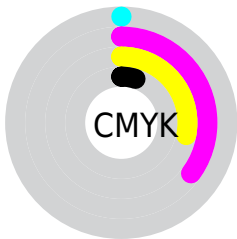
Distribution



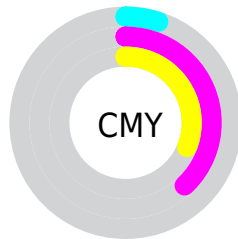
- Red (95%)
- Green (62%)
- Blue (69%)



- Red (95%)
- Yellow (62%)
- Blue (69%)



- Cyan (0%)
- Magenta (35%)
- Yellow (28%)
- Black (5%)



- Cyan (5%)
- Magenta (38%)
- Yellow (31%)

Brightness & Saturation Gradients

These gradients show how the CIELCh color 74, 34.098, 7.401 changes by changing the brightness by 10 percent. The first figure shows a shift by +10% for each color and the second figure -10%.

Similar to the brightness gradients but the following saturation gradients show a change of the CIELCh color 74, 34.098, 7.401 by changing the saturation by 10% instead.

 74, 34.098, 7.401  74, 34.098, 7.401

 100, 34.098, 7.401  64, 34.098, 7.401

 94, 34.098, 7.401  54, 34.098, 7.401

 44, 34.098, 7.401

 34, 34.098, 7.401

 24, 34.098, 7.401

 14, 34.098, 7.401

 4, 34.098, 7.401

 0, 34.098, 7.401

 74, 34.098, 7.401  74, 34.098, 7.401

■ 68, 44.516, 9.223

■ 80, 23.839, 5.926

■ 63, 54.802, 11.503

■ 86, 13.940, 4.692

■ 59, 64.559, 14.395

■ 93, 4.500, 3.580

■ 55, 73.382, 18.053

■ 99, 4.227, 185.395

■ 53, 81.014, 22.568

■ 99, 4.076, 199.309

■ 51, 87.470, 27.812

■ 51, 90.477, 30.477

Harmonies

Complementary

The Complementary color scheme is a pair of colors which are on the opposite of each other on the color wheel.



74, 34.098, 7.401



90, 29.379, 179.928

Rectangle

The Rectangle color scheme consists of four colors that form a rectangle on the color wheel.



74, 34.098, 7.401



74, 34.098, 57.401



74, 34.098, 187.401



74, 34.098, 237.401

Sweetspot

The Sweet Spot groups the original color and five complimentary colors.



74, 34.095, 7.404



93, 9.562, 4.145



74, 51.108, 320.362



49, 6.548, 4.299



0, 0.000, 0.000



53, 0.007, 296.813

Same Dimension

The Same Dimension uses a secret algorithm to generate beautiful new colors.



74, 34.095, 7.404



73, 43.064, 8.663



79, 28.024, 49.543



48, 5.250, 4.087



39, 73.384, 29.491



9, 29.999, 16.723

Inverse Universe

The Inverse Universe completely reimagines the original color for something new.



74, 34.095, 7.404



73, 43.064, 8.663



84, 22.541, 235.301



48, 5.250, 4.087



39, 73.384, 29.491



9, 29.999, 16.723

Previews

White Background



This preview shows how the CIELCh color 74, 34.098, 7.401 looks on a white background.

Color Contrast Check

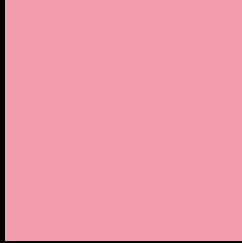
Large Text (above 18pt) WCAG AA × Fail

Any Text WCAG AA × Fail

Large Text (above 18pt) WCAG AAA × Fail

Any Text WCAG AAA × Fail

Black Background



This preview shows how the CIELCh color 74, 34.098, 7.401 looks on a black background.

Color Contrast Check

Large Text (above 18pt) WCAG AA ✓ Pass

Any Text WCAG AA ✓ Pass

Large Text (above 18pt) WCAG AAA ✓ Pass

Any Text WCAG AAA ✓ Pass

If you want to check with other color combinations, try the [Color Contrast Checker](#).

CIELCh 74, 34.098, 7.401

Background



This preview shows how black text looks on a background with the CIELCh color 74, 34.098, 7.401.

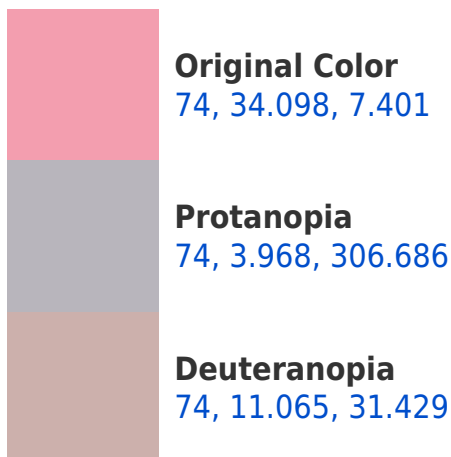


This preview shows how white text looks on a background with the CIELCh color 74, 34.098, 7.401.

Color Blindness Simulation

Color vision deficiency is a very complex topic, and I could not describe the different causes any better than Wikipedia does, so if you want to learn more, you should check out their [article about color blindness](#).

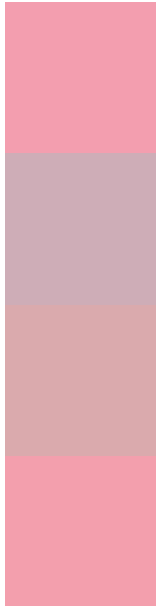
Dichromacy





Tritanopia
74, 33.452, 11.674

Trichromacy



Original Color
74, 34.098, 7.401

Protanomaly
74, 13.617, 357.305

Deuteranomaly
74, 18.748, 16.146

Tritanomaly
74, 33.518, 9.858

Monochromacy



Original Color
74, 34.098, 7.401

Achromatopsia
76, 0.009, 296.813

Achromatomaly
75, 12.219, 5.160

CSS Examples

Text

The CSS property to change the color of the text to CIELCh 74, 34.098, 7.401 is called "color". The color property can be set on classes, ids or directly on the HTML element.

This example shows how text in the color `rgb(243, 158, 175)` looks like.

```
.text, #text, p{  
    color:rgb(243, 158, 175)  
}
```

If you want to add a text shadow in that color use the text-shadow property, you can generate a text shadow directly with our [CSS Text Shadow Generator](#).

Here you see how black text with a 4 pixel rgb(243, 158, 175) colored shadow looks like.

```
.shadow{ text-shadow: 4px 4px 2px rgb(243, 158, 175) }
```

Border

The CSS property to change the border of an element to CIELCh 74, 34.098, 7.401 is called "border". The border property can be set on classes, ids or directly on the HTML element.

This example shows the color as border, it can be applied via the CSS property "border" or "border-color".

```
.border, #border, table{ border:4px solid rgb(243, 158, 175) }
```

If only the border color should be changed use the property border-color.

```
.border{ border-color:rgb(243, 158, 175) }
```

If you want to add a box shadow in that color use:

Here you see how a box with a 4 pixel rgb(243, 158, 175) colored shadow looks like.

```
.boxshadow{ -moz-box-shadow:4px 4px 4px  
4px rgb(243, 158, 175); -webkit-box-  
shadow:4px 4px 4px 4px rgb(243, 158, 175);  
box-shadow:4px 4px 4px 4px rgb(243, 158,  
175) }
```

Background

The CSS property to change the background color of an element to CIELCh 74, 34.098, 7.401 is called "background". The background property can be set on classes, ids or directly on the HTML element.

```
.background, #background, body{  
background: rgb(243, 158, 175) }
```

If only the background color should be changed can be used:

```
.background{ background-color: rgb(243,  
158, 175) }
```

This example shows the color as background, it is applied via the CSS property "background".

To optimize and compress your CSS code, you can use our [online CSS compressor and optimizer](#) based on csstidy. If you want to create a linear or radial gradient as background or border, check our [CSS Gradient Generator](#).

Hey! You found this booklet interesting? Support Converting Colors with the new Membership Option!

The pro membership hides all ads, plus gives you double the colors in the color bucket, and more awesome pro features!

[Learn more, Memberships starting at \\$2.50/m!](#)

**Follow me
on Twitter!**

@ConvertingColor