

Converting Colors

CIELCh(74, 38.435, 9.724)

Have a look what the booklet for
CIELCh(74, 38.435, 9.724) contains.

CIELCh(74, 38.396, 9.699)	3
<i>Conversions</i>	4
<i>Details</i>	6
<i>Harmonies</i>	11
<i>Previews</i>	20
<i>Color Blindness Simulation</i>	23
<i>CSS Examples</i>	26

Color

CIELCh(74, 38.396, 9.699)

Conversions

Conversions Part 1

Format	Color
Hex	FB9BAC
RGB	251, 155, 172
RGB Percent	98%, 61%, 67%
CMY	0.0174, 0.3937, 0.3270
CMYK	0.00, 0.38, 0.32, 0.02
HSL	349°, 92%, 79%
HSV	349°, 38%, 98%
XYZ	58.6920, 46.7039, 44.7544
YIQ	185.6420, 51.7590, 25.6390

Conversions

Conversions Part 2

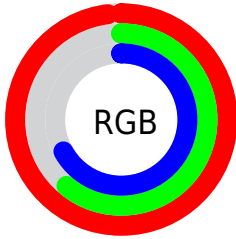
Format	Color
RYB	251, 155, 172
Decimal	16489388
CIELab	74.00, 37.85, 6.47
CIElCh	74, 38.396, 9.699
Yxy	46.7039, 0.3909, 0.3110
Android (android.graphics.Color)	4294679468 (0xFFFB9BAC)
YUV	185.6420, -6.7255, 57.3190
Hunter-Lab	68.3403, 33.7038, 9.0106

Details

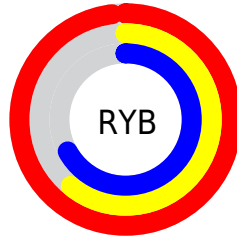
The CIELCh color **74, 38.396, 9.699** is a light color, and the websafe version is hex **FF9999**. A complement of this color would be **92, 32.171, 181.427**, and the grayscale version is **75, 0.009, 296.813**.

A 20% lighter version of the original color is **89, 18.021, 353.379**, and **54, 38.361, 9.472** is the 20% darker color. If you saturate the color by 10%, you get **68, 49.141, 11.677**, and if you desaturate by 10%, it is **80, 27.775, 8.116**.

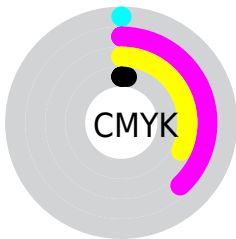
Distribution



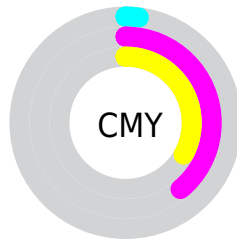
- Red (98%)
- Green (61%)
- Blue (67%)



- Red (98%)
- Yellow (61%)
- Blue (67%)



- Cyan (0%)
- Magenta (38%)
- Yellow (32%)
- Black (2%)



- Cyan (2%)
- Magenta (39%)
- Yellow (33%)

Brightness & Saturation Gradients

These gradients show how the CIELCh color 74, 38.396, 9.699 changes by changing the brightness by 10 percent. The first figure shows a shift by +10% for each color and the second figure -10%.

Similar to the brightness gradients but the following saturation gradients show a change of the CIELCh color 74, 38.396, 9.699 by changing the saturation by 10% instead.

 74, 38.396, 9.699

 74, 38.396, 9.699

 100, 38.396, 9.699

 64, 38.396, 9.699

 94, 38.396, 9.699

 54, 38.396, 9.699

 44, 38.396, 9.699

 34, 38.396, 9.699

 24, 38.396, 9.699

 14, 38.396, 9.699

 4, 38.396, 9.699

 0, 38.396, 9.699

 74, 38.396, 9.699

 74, 38.396, 9.699

68, 49.141, 11.677

80, 27.775, 8.116

63, 59.687, 14.172

86, 17.511, 6.814

59, 69.620, 17.343

93, 7.724, 5.697

56, 78.565, 21.321

100, 1.538,
185.266

54, 86.330, 26.107

100, 1.540,
199.738

53, 92.973, 31.351

53, 94.067, 32.185

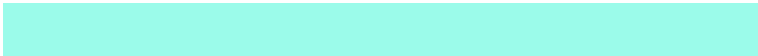
Harmonies

Complementary

The Complementary color scheme is a pair of colors which are on the opposite of each other on the color wheel.



74, 38.396, 9.699



92, 32.171, 181.427

Rectangle

The Rectangle color scheme consists of four colors that form a rectangle on the color wheel.



74, 38.396, 9.699



74, 38.396, 59.699



74, 38.396, 189.699



74, 38.396, 239.699

Sweetspot

The Sweet Spot groups the original color and five complimentary colors.



74, 38.393, 9.702



93, 10.469, 5.990



75, 57.507, 321.017



48, 7.061, 6.138



0, 0.000, 0.000



53, 0.007, 296.813

Same Dimension

The Same Dimension uses a secret algorithm to generate beautiful new colors.



74, 38.393, 9.702



71, 47.351, 11.192



80, 31.732, 51.158



49, 5.299, 5.826



39, 75.294, 31.203



9, 31.104, 18.837

Inverse Universe

The Inverse Universe completely reimagines the original color for something new.



74, 38.393, 9.702



71, 47.351, 11.192



85, 25.115, 238.243



49, 5.299, 5.826



39, 75.294, 31.203



9, 31.104, 18.837

Previews

White Background



This preview shows how the CIELCh color 74, 38.396, 9.699 looks on a white background.

Color Contrast Check

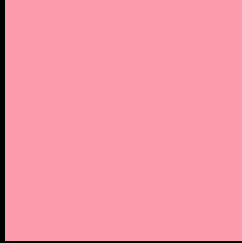
Large Text (above 18pt) WCAG AA × Fail

Any Text WCAG AA × Fail

Large Text (above 18pt) WCAG AAA × Fail

Any Text WCAG AAA × Fail

Black Background



This preview shows how the CIE LCh color 74, 38.396, 9.699 looks on a black background.

Color Contrast Check

Large Text (above 18pt) WCAG AA ✓ Pass

Any Text WCAG AA ✓ Pass

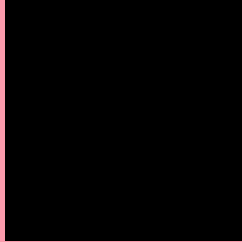
Large Text (above 18pt) WCAG AAA ✓ Pass

Any Text WCAG AAA ✓ Pass

If you want to check with other color combinations, try the [Color Contrast Checker](#).

CIELCh 74, 38.396, 9.699

Background



This preview shows how black text looks on a background with the CIELCh color 74, 38.396, 9.699.



This preview shows how white text looks on a background with the CIELCh color 74, 38.396, 9.699.

Color Blindness Simulation

Color vision deficiency is a very complex topic, and I could not describe the different causes any better than Wikipedia does, so if you want to learn more, you should check out their [article about color blindness](#).

Dichromacy



Original Color

74, 38.396, 9.699

Protanopia

74, 3.452, 309.174

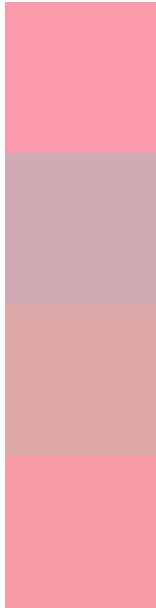
Deuteranopia

74, 12.151, 40.921



Tritanopia
74, 37.920, 13.521

Trichromacy



Original Color
74, 38.396, 9.699

Protanomaly
73, 15.075, 359.823

Deuteranomaly
74, 21.239, 19.838

Tritanomaly
74, 37.933, 11.915

Monochromacy



Original Color
74, 38.396, 9.699

Achromatopsia
75, 0.009, 296.813

Achromatomaly
74, 13.751, 7.049

CSS Examples

Text

The CSS property to change the color of the text to CIELCh 74, 38.396, 9.699 is called "color". The color property can be set on classes, ids or directly on the HTML element.

This example shows how text in the color `rgb(251, 155, 172)` looks like.

```
.text, #text, p{  
    color:rgb(251, 155, 172)  
}
```

If you want to add a text shadow in that color use the text-shadow property, you can generate a text shadow directly with our [CSS Text Shadow Generator](#).

Here you see how black text with a 4 pixel rgb(251, 155, 172) colored shadow looks like.

```
.shadow{ text-shadow: 4px 4px 2px rgb(251, 155, 172) }
```

Border

The CSS property to change the border of an element to CIELCh 74, 38.396, 9.699 is called "border". The border property can be set on classes, ids or directly on the HTML element.

This example shows the color as border, it can be applied via the CSS property "border" or "border-color".

```
.border, #border, table{ border:4px solid rgb(251, 155, 172) }
```

If only the border color should be changed use the property `border-color`.

```
.border{ border-color:rgb(251, 155, 172) }
```

If you want to add a box shadow in that color use:

Here you see how a box with a 4 pixel `rgb(251, 155, 172)` colored shadow looks like.

```
.boxshadow{ -moz-box-shadow:4px 4px 4px  
4px rgb(251, 155, 172); -webkit-box-  
shadow:4px 4px 4px 4px rgb(251, 155, 172);  
box-shadow:4px 4px 4px 4px rgb(251, 155,  
172) }
```

Background

The CSS property to change the background color of an element to CIELCh 74, 38.396, 9.699 is called "background". The background property can be set on classes, ids or directly on the HTML element.

```
.background, #background, body{  
background: rgb(251, 155, 172) }
```

If only the background color should be changed can be used:

```
.background{ background-color: rgb(251,  
155, 172) }
```

This example shows the color as background, it is applied via the CSS property "background".

To optimize and compress your CSS code, you can use our [online CSS compressor and optimizer](#) based on csstidy. If you want to create a linear or radial gradient as background or border, check our [CSS Gradient Generator](#).

Hey! You found this booklet interesting? Support Converting Colors with the new Membership Option!

The pro membership hides all ads, plus gives you double the colors in the color bucket, and more awesome pro features!

[Learn more, Memberships starting at \\$2.50/m!](#)

**Follow me
on Twitter!**

@ConvertingColor