

Converting Colors

CIELCh(74, 40.866, 8.758)

Have a look what the booklet for
CIELCh(74, 40.866, 8.758) contains.

CIELCh(74, 40.916, 8.607)	3
<i>Conversions</i>	4
<i>Details</i>	6
<i>Harmonies</i>	11
<i>Previews</i>	20
<i>Color Blindness Simulation</i>	23
<i>CSS Examples</i>	26

Color

CIELCh(74, 40.916, 8.607)

Conversions

Conversions Part 1

Format	Color
Hex	FE98AC
RGB	254, 152, 172
RGB Percent	100%, 60%, 67%
CMY	0.0024, 0.4025, 0.3241
CMYK	0.00, 0.40, 0.32, 0.00
HSL	348°, 99%, 80%
HSV	348°, 40%, 100%
XYZ	59.7771, 46.7039, 45.0669
YIQ	184.7780, 54.3720, 27.8440

Conversions

Conversions Part 2

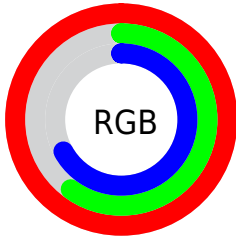
Format	Color
RYB	254, 152, 172
Decimal	16685228
CIELab	74.00, 40.46, 6.12
CIELCh	74, 40.916, 8.607
Yxy	46.7039, 0.3944, 0.3082
Android (android.graphics.Color)	4294875308 (0xFFFE98AC)
YUV	184.7780, -6.2996, 60.7077
Hunter-Lab	68.3403, 36.5381, 8.7395

Details

The CIELCh color $74, 40.916, 8.607$ is a light color, and the websafe version is hex FF9999 . A complement of this color would be $93, 34.325, 179.681$, and the grayscale version is $75, 0.009, 296.813$.

A 20% lighter version of the original color is $88, 19.717, 350.910$, and $54, 40.936, 8.556$ is the 20% darker color. If you saturate the color by 10%, you get $68, 51.708, 10.662$, and if you desaturate by 10%, it is $80, 30.149, 6.961$.

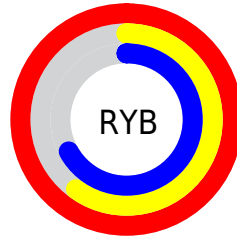
Distribution



Red (100%)

Green (60%)

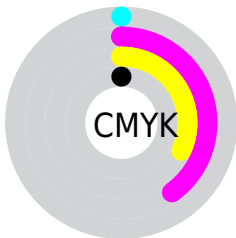
Blue (67%)



Red (100%)

Yellow (60%)

Blue (67%)

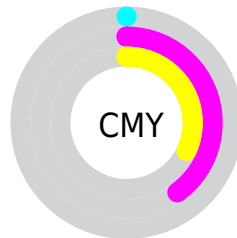


Cyan (0%)

Magenta (40%)

Yellow (32%)

Black (0%)



Cyan (0%)

Magenta (40%)

Yellow (32%)

Brightness & Saturation Gradients

These gradients show how the CIELCh color 74, 40.916, 8.607 changes by changing the brightness by 10 percent. The first figure shows a shift by +10% for each color and the second figure -10%.

Similar to the brightness gradients but the following saturation gradients show a change of the CIELCh color 74, 40.916, 8.607 by changing the saturation by 10% instead.

 74, 40.916, 8.607  74, 40.916, 8.607

 100, 40.916, 8.607  64, 40.916, 8.607

 94, 40.916, 8.607  54, 40.916, 8.607

 44, 40.916, 8.607

 34, 40.916, 8.607

 24, 40.916, 8.607

 14, 40.916, 8.607

 4, 40.916, 8.607

 0, 40.916, 8.607

 74, 40.916, 8.607  74, 40.916, 8.607

■ 68, 51.708, 10.662

■ 80, 30.149, 6.961

■ 64, 62.167, 13.256

■ 86, 19.674, 5.608

■ 59, 71.861, 16.550

■ 93, 9.636, 4.458

■ 56, 80.427, 20.677

100, 0.106,
357.768

■ 54, 87.738, 25.629

100, 0.214,
202.489

■ 53, 93.987, 30.908

Harmonies

Complementary

The Complementary color scheme is a pair of colors which are on the opposite of each other on the color wheel.



74, 40.916, 8.607



93, 34.325, 179.681

Rectangle

The Rectangle color scheme consists of four colors that form a rectangle on the color wheel.



74, 40.916, 8.607



74, 40.916, 58.607



74, 40.916, 188.607



74, 40.916, 238.607

Sweetspot

The Sweet Spot groups the original color and five complimentary colors.



74, 40.913, 8.610



92, 11.520, 4.666



74, 60.726, 320.578



48, 7.667, 4.811



0, 0.000, 0.000



53, 0.007, 296.813

Same Dimension

The Same Dimension uses a secret algorithm to generate beautiful new colors.



74, 40.913, 8.610



70, 49.544, 10.191



80, 34.046, 49.340



50, 5.422, 4.392



40, 75.146, 29.899



10, 32.008, 18.937

Inverse Universe

The Inverse Universe completely reimagines the original color for something new.



74, 40.913, 8.610



70, 49.544, 10.191



86, 26.348, 236.179



50, 5.422, 4.392



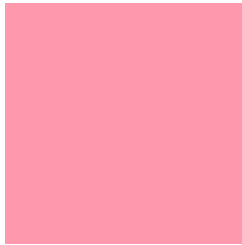
40, 75.146, 29.899



10, 32.008, 18.937

Previews

White Background



This preview shows how the CIELCh color 74, 40.916, 8.607 looks on a white background.

Color Contrast Check

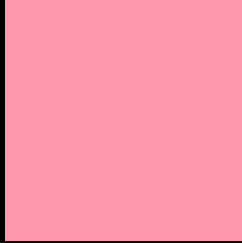
Large Text (above 18pt) WCAG AA × Fail

Any Text WCAG AA × Fail

Large Text (above 18pt) WCAG AAA × Fail

Any Text WCAG AAA × Fail

Black Background



This preview shows how the CIELCh color 74, 40.916, 8.607 looks on a black background.

Color Contrast Check

Large Text (above 18pt) WCAG AA ✓ Pass

Any Text WCAG AA ✓ Pass

Large Text (above 18pt) WCAG AAA ✓ Pass

Any Text WCAG AAA ✓ Pass

If you want to check with other color combinations, try the [Color Contrast Checker](#).

CIELCh 74, 40.916, 8.607

Background



This preview shows how black text looks on a background with the CIELCh color 74, 40.916, 8.607.

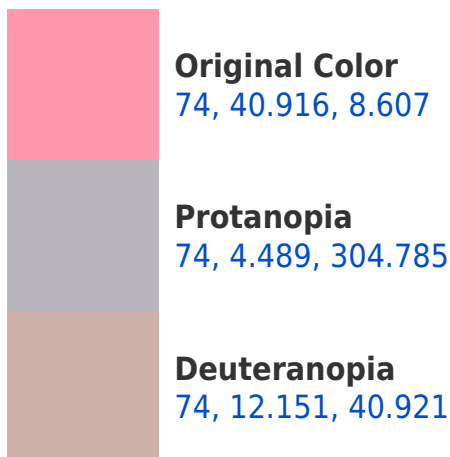


This preview shows how white text looks on a background with the CIELCh color 74, 40.916, 8.607.

Color Blindness Simulation

Color vision deficiency is a very complex topic, and I could not describe the different causes any better than Wikipedia does, so if you want to learn more, you should check out their [article about color blindness](#).

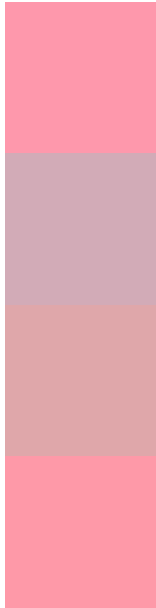
Dichromacy





Tritanopia
74, 39.946, 15.012

Trichromacy



Original Color
74, 40.916, 8.607

Protanomaly
74, 16.146, 357.277

Deuteranomaly
74, 22.017, 17.207

Tritanomaly
74, 40.358, 12.148

Monochromacy



Original Color
74, 40.916, 8.607

Achromatopsia
75, 0.009, 296.813

Achromatomaly
74, 14.626, 5.795

CSS Examples

Text

The CSS property to change the color of the text to CIELCh 74, 40.916, 8.607 is called "color". The color property can be set on classes, ids or directly on the HTML element.

This example shows how text in the color `rgb(254, 152, 172)` looks like.

```
.text, #text, p{  
    color:rgb(254, 152, 172)  
}
```

If you want to add a text shadow in that color use the text-shadow property, you can generate a text shadow directly with our [CSS Text Shadow Generator](#).

Here you see how black text with a 4 pixel rgb(254, 152, 172) colored shadow looks like.

```
.shadow{ text-shadow: 4px 4px 2px rgb(254, 152, 172) }
```

Border

The CSS property to change the border of an element to CIELCh 74, 40.916, 8.607 is called "border". The border property can be set on classes, ids or directly on the HTML element.

This example shows the color as border, it can be applied via the CSS property "border" or "border-color".

```
.border, #border, table{ border:4px solid rgb(254, 152, 172) }
```

If only the border color should be changed use the property `border-color`.

```
.border{ border-color:rgb(254, 152, 172) }
```

If you want to add a box shadow in that color use:

Here you see how a box with a 4 pixel `rgb(254, 152, 172)` colored shadow looks like.

```
.boxshadow{ -moz-box-shadow:4px 4px 4px  
4px rgb(254, 152, 172); -webkit-box-  
shadow:4px 4px 4px 4px rgb(254, 152, 172);  
box-shadow:4px 4px 4px 4px rgb(254, 152,  
172) }
```

Background

The CSS property to change the background color of an element to CIELCh 74, 40.916, 8.607 is called "background". The background property can be set on classes, ids or directly on the HTML element.

```
.background, #background, body{  
background: rgb(254, 152, 172) }
```

If only the background color should be changed can be used:

```
.background{ background-color: rgb(254,  
152, 172) }
```

This example shows the color as background, it is applied via the CSS property "background".

To optimize and compress your CSS code, you can use our [online CSS compressor and optimizer](#) based on csstidy. If you want to create a linear or radial gradient as background or border, check our [CSS Gradient Generator](#).

Hey! You found this booklet interesting? Support Converting Colors with the new Membership Option!

The pro membership hides all ads, plus gives you double the colors in the color bucket, and more awesome pro features!

[Learn more, Memberships starting at \\$2.50/m!](#)

**Follow me
on Twitter!**

@ConvertingColor